

# KD-Validated Anti-PIP5K1C Recombinant Rabbit Monoclonal Antibody



**Catalog #: 65435**

## Aliases

PIP5K1C; Phosphatidylinositol-4-Phosphate 5-Kinase Type 1 Gamma; PIP5Kgamma; KIAA0589; LCCS3; Phosphatidylinositol-4-Phosphate 5-Kinase, Type I, Gamma; Phosphatidylinositol 4-Phosphate 5-Kinase Type-1 Gamma; Type I Phosphatidylinositol 4-Phosphate 5-Kinase Gamma; PtdIns(4)P-5-Kinase 1 Gamma; PIP5K1gamma; EC 2.7.1.68; Diphosphoinositide Kinase; Type I PIP Kinase; PIP5K1-Gamma; PIP5K-GAMMA; EC 2.7.1

## Background

Gene Name: PIP5K1C

NCBI Gene Entry: [23396](#)

UniProt Entry: [O60331](#)

## Application Information

Molecular Weight: Predicted, 73 kDa; observed, 73-90 kDa

Clonality: Rabbit monoclonal antibody

Clone ID: 25GB1540

Species Reactivity: Human, mouse, rat

Applications Tested: Western blotting (WB), flow cytometry (FCM), immunocytochemistry (IC)

## Immunogen

A synthesized peptide derived from human PIP5K1C

## Isotype

Rabbit IgG

## Storage Buffer

Supplied in PBS (pH 7.4) containing 50% glycerol, and 0.02% sodium azide.

## Storage

Store at -20 °C for one year.

## Recommended Dilutions

Western Blotting (WB): 1:1,000-1:5,000

Flow Cytometry (FCM): 1:2,000

Immunocytochemistry (IC): 1:100-1:1,000

---

### SUPPORT

SUPPORT@GENUINBIOTECH.COM  
TEL: +1-540-855-7041

### ORDERS

SALES@GENUINBIOTECH.COM  
FAX: +1-540-855-7041

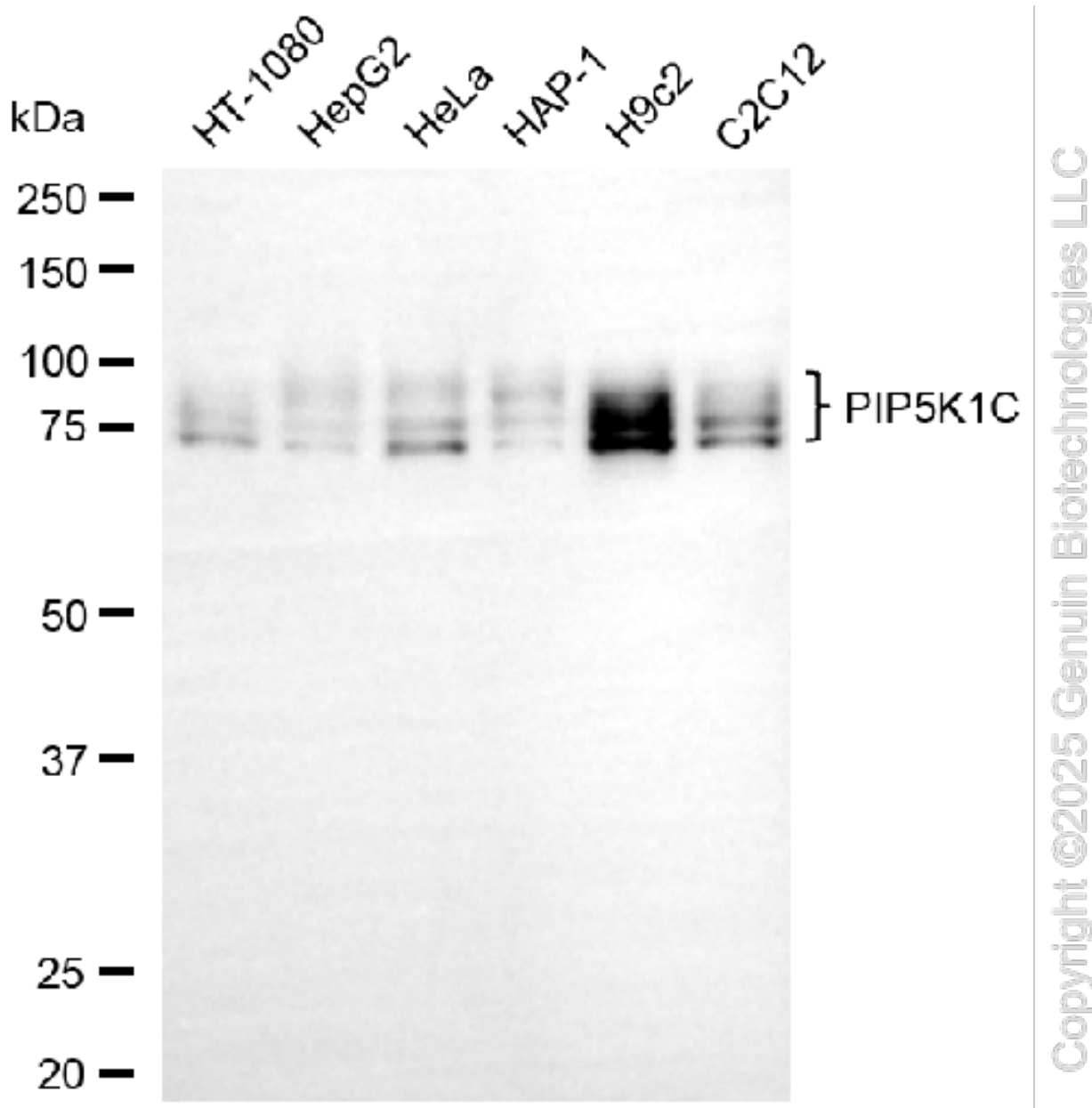
[WWW.GENUINBIOTECH.COM](http://WWW.GENUINBIOTECH.COM)

## KD-Validated Anti-PIP5K1C Recombinant Rabbit Monoclonal Antibody

PAGE 2

**Note:** This product is for research use only.

### Validation Data



Western blotting analysis using anti-PIP5K1C antibody (Cat#65435). Total cell lysates (30 µg) from various cell lines were loaded and separated by SDS-PAGE. The blot was incubated with anti-PIP5K1C antibody (Cat#65435, 1:5,000) and HRP-conjugated goat anti-rabbit secondary antibody (Cat#201, 1:20,000) respectively. Image was developed using FeQ™ ECL Substrate Kit (Cat#226).

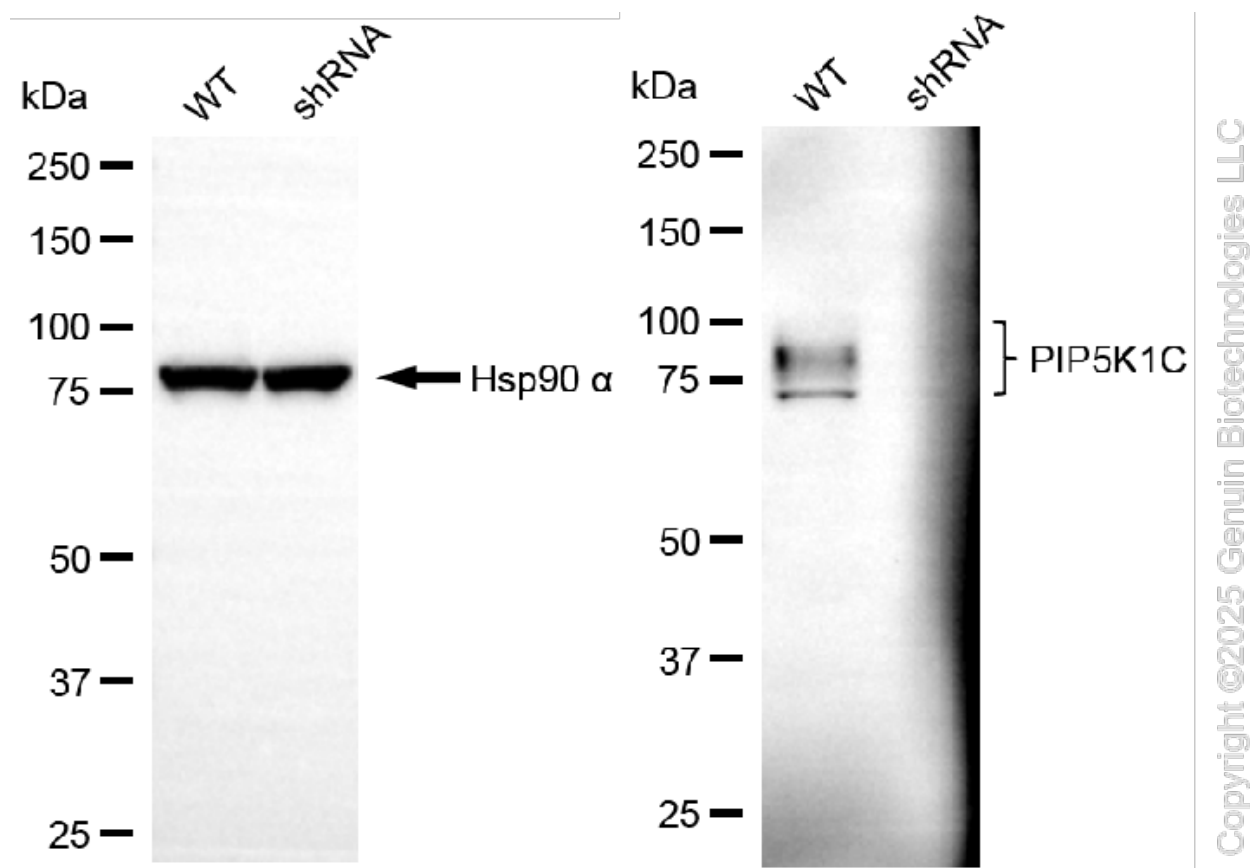
#### SUPPORT

SUPPORT@GENUINBIOTECH.COM  
TEL: +1-540-855-7041

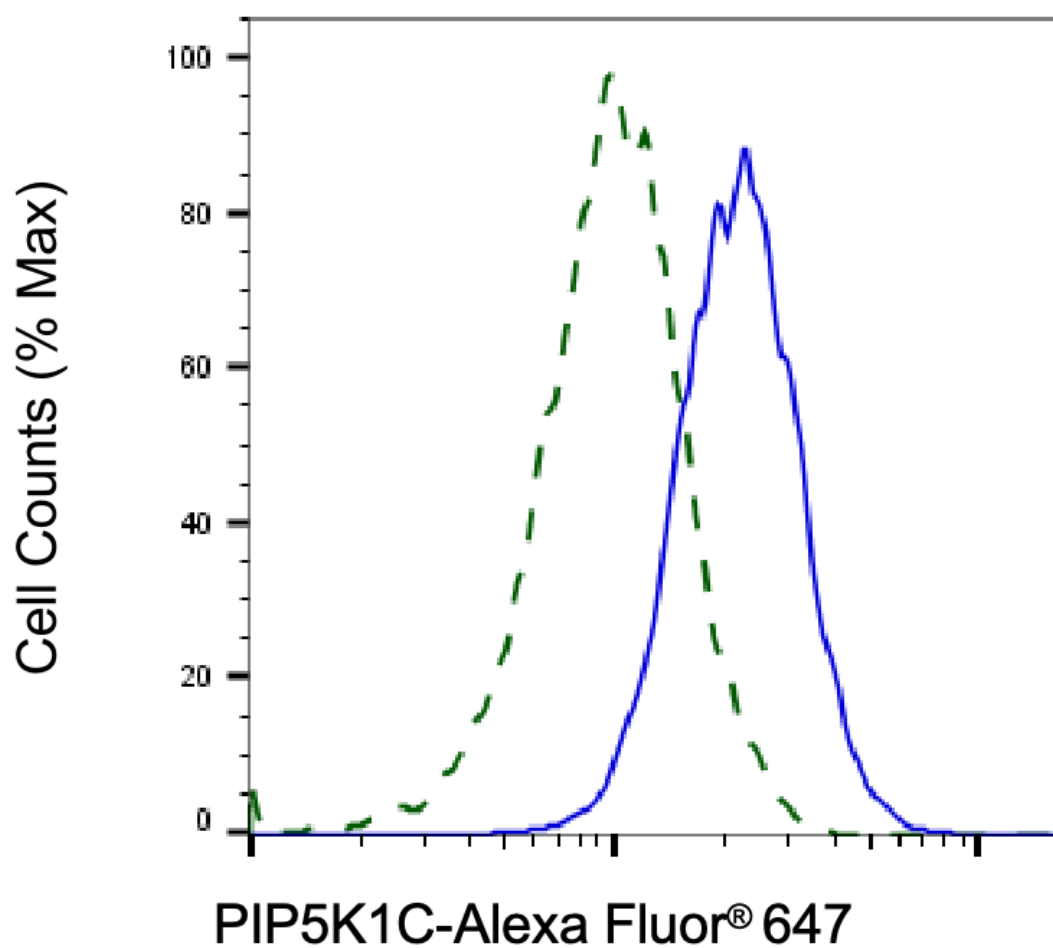
#### ORDERS

SALES@GENUINBIOTECH.COM  
FAX: +1-540-855-7041

WWW.GENUINBIOTECH.COM

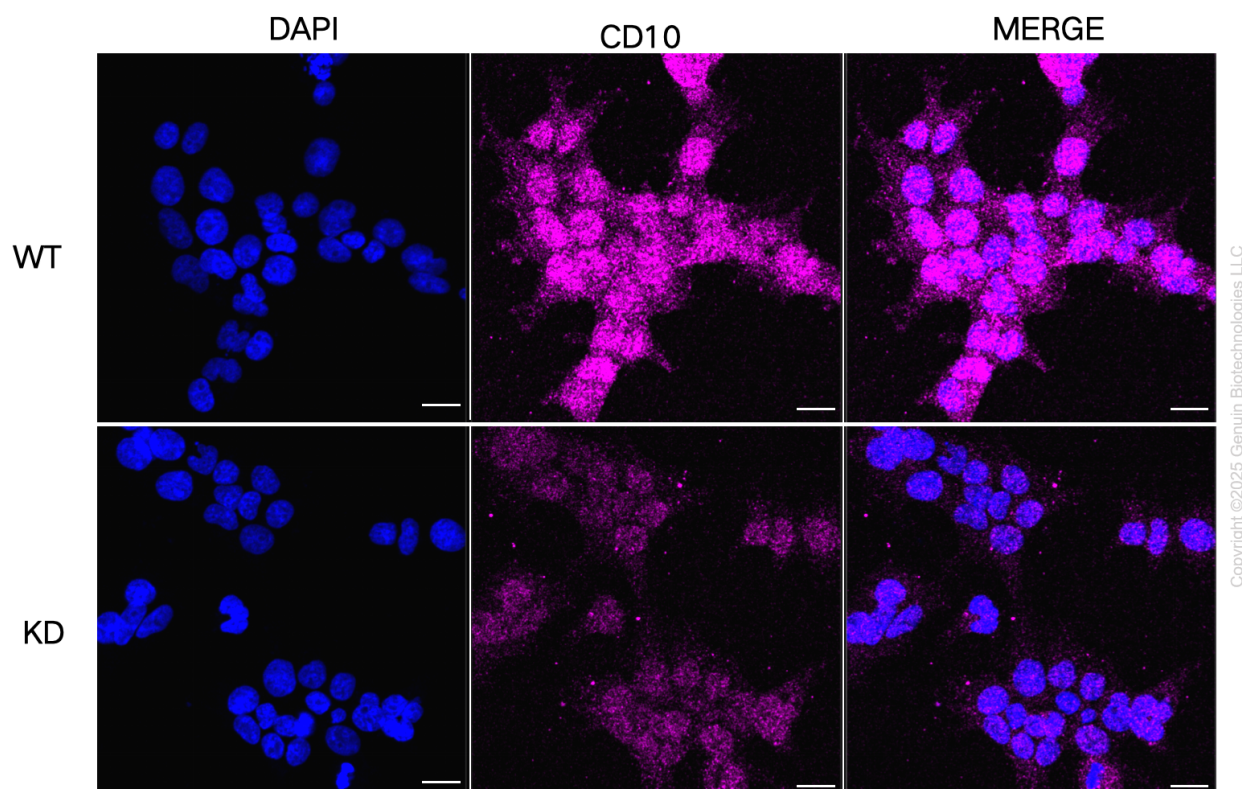


Western blotting analysis using anti-PIP5K1C antibody (Cat#65435). PIP5K1C expression in wild-type (WT) and PIP5K1C shRNA knockdown (KD) HeLa cells with 30 µg of total cell lysates. Hsp90 α serves as a loading control. The blot was incubated with anti-PIP5K1C antibody (Cat#65435, 1:2,000) and HRP-conjugated goat anti-rabbit secondary antibody (Cat#201, 1:20,000) respectively. Image was developed using FeQ™ ECL Substrate Kit (Cat#226).



Copyright ©2025 Genuin Biotechnologies LLC

Validation of PIP5K1C knockdown using flow cytometry. Wild-type(WT, Blue) and knockdown(KD, Green) HeLa cells were stained with anti-PIP5K1C antibody (Cat#65435, 1:2,000) and analyzed using BD flow cytometer.



Immunocytochemical staining of HeLa cells using anti-CD10 antibody (Cat#65435, 1:1,000), Top panel: wild-type (WT); Bottom panel: CD10 shRNA knockdown (KD). Nuclei were stained blue with DAPI; Acyl-CoA dehydrogenase short chain was stained magenta with Alexa Fluor® 647. Scale bar, 20  $\mu$ m.