

KD-Validated Anti-BCAM Recombinant Rabbit Monoclonal Antibody



Catalog #: 65437

Aliases

BCAM; Basal Cell Adhesion Molecule (Lutheran Blood Group); F8/G253; CD239; B-CAM; LU; Basal Cell Adhesion Molecule (Lu And Au Blood Groups); B-CAM Cell Surface Glycoprotein; Basal Cell Adhesion Molecule; Auberger B Antigen; F8/G253 Antigen; MSK19; Lutheran Blood Group (Auberger B Antigen Included); Lutheran Blood Group Variant LUGA; Lutheran Blood Group Glycoprotein; B-Cell Adhesion Molecule; Lutheran Antigen; CD239 Antigen; AU

Background

Gene Name: BCAM

NCBI Gene Entry: [4059](#)

UniProt Entry: [P50895](#)

Application Information

Molecular Weight: Predicted, 67 kDa; observed, 75-85 kDa

Clonality: Rabbit monoclonal antibody

Clone ID: 25GB1550

Species Reactivity: Human

Applications Tested: Western blotting (WB), flow cytometry (FCM)

Immunogen

A synthesized peptide derived from human BCAM

Isotype

Rabbit IgG

Storage Buffer

Supplied in PBS (pH 7.4) containing 50% glycerol, and 0.02% sodium azide.

Storage

Store at -20 °C for one year.

Recommended Dilutions

Western Blotting (WB): 1:1,000-1:5,000

Flow Cytometry (FCM): 1:2,000

SUPPORT

SUPPORT@GENUINBIOTECH.COM
TEL: +1-540-855-7041

ORDERS

SALES@GENUINBIOTECH.COM
FAX: +1-540-855-7041

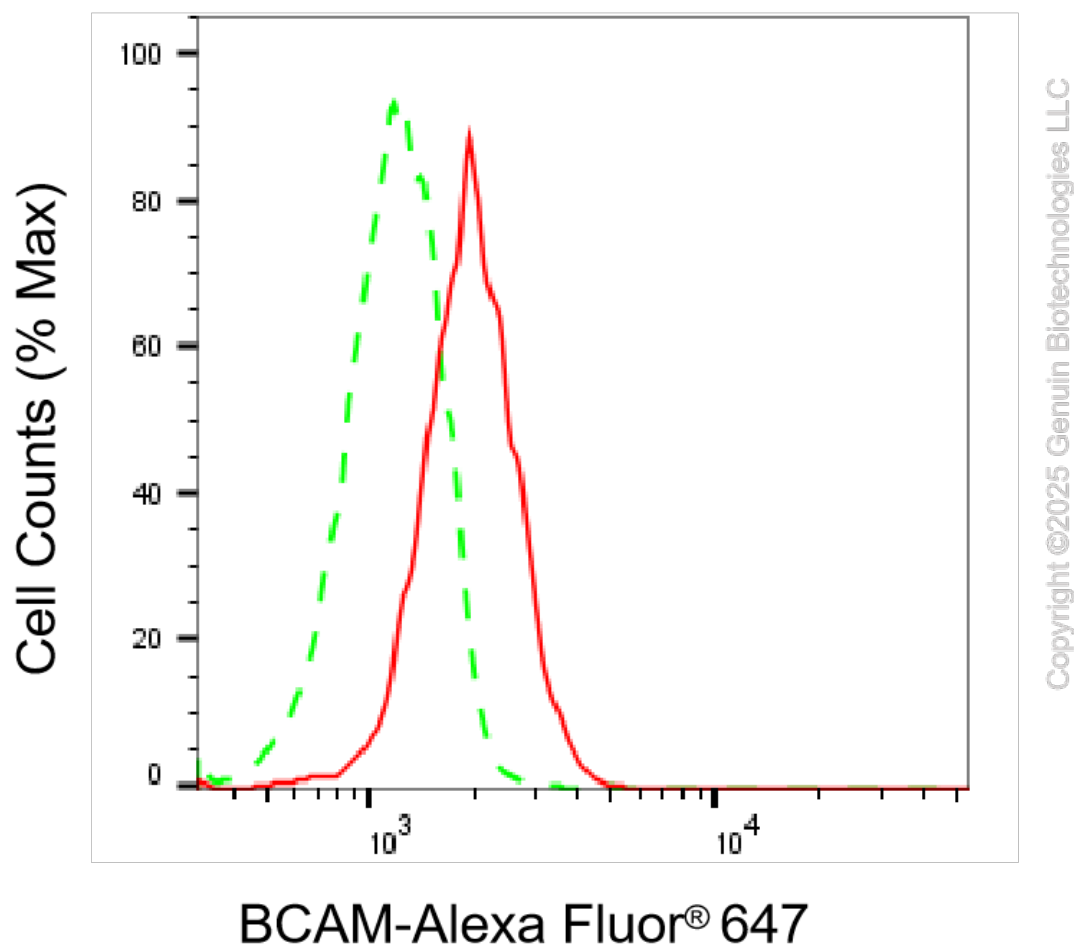
WWW.GENUINBIOTECH.COM

KD-Validated Anti-BCAM Recombinant Rabbit Monoclonal Antibody

PAGE 2

Note: This product is for research use only.

Validation Data



Flow cytometric analysis of BCAM expression in HAP-1 cells using anti-BCAM antibody (Cat#65437, 1:2,000). Green, isotype control; red, BCAM.

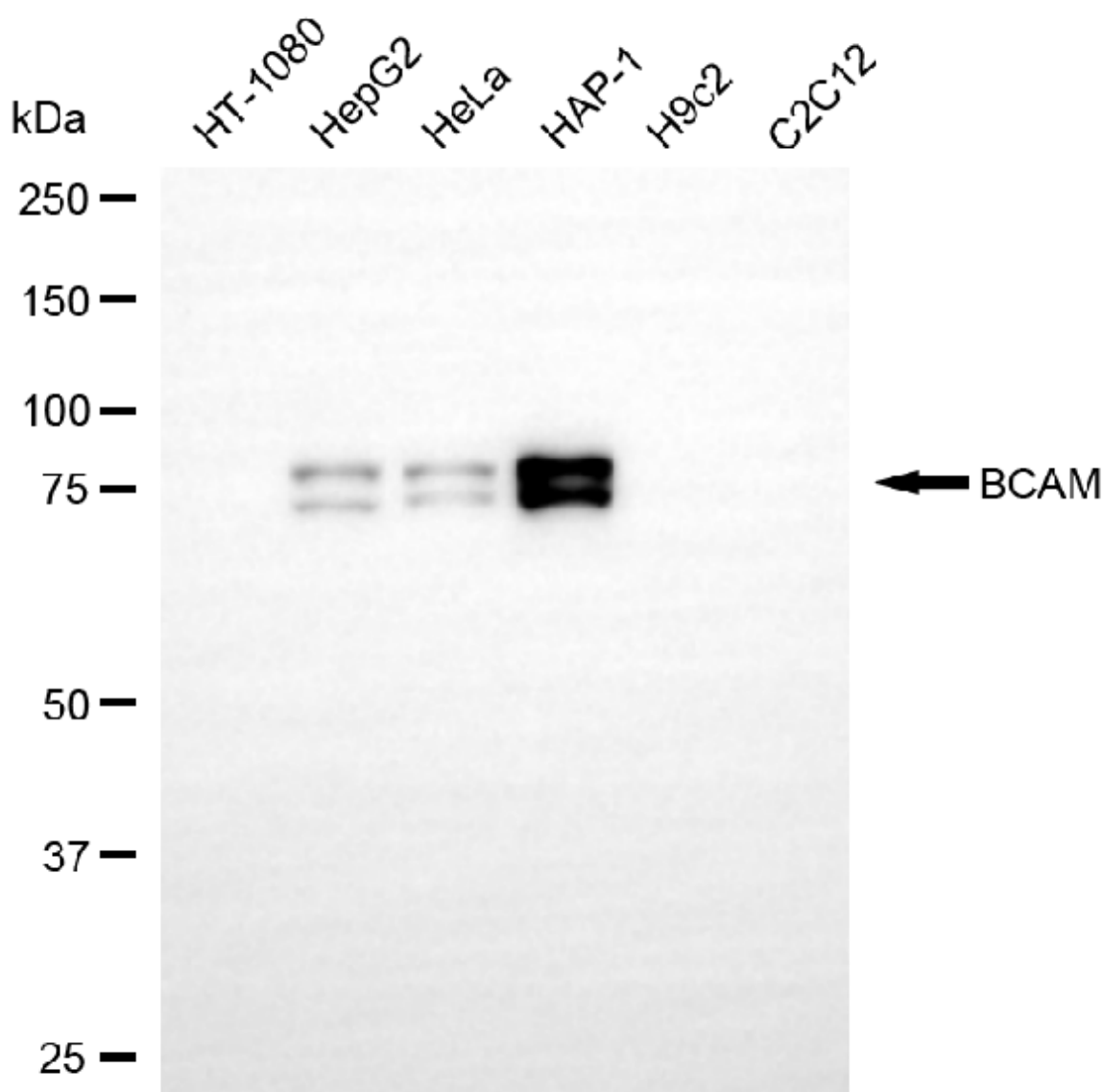
SUPPORT

SUPPORT@GENUINBIOTECH.COM
TEL: +1-540-855-7041

ORDERS

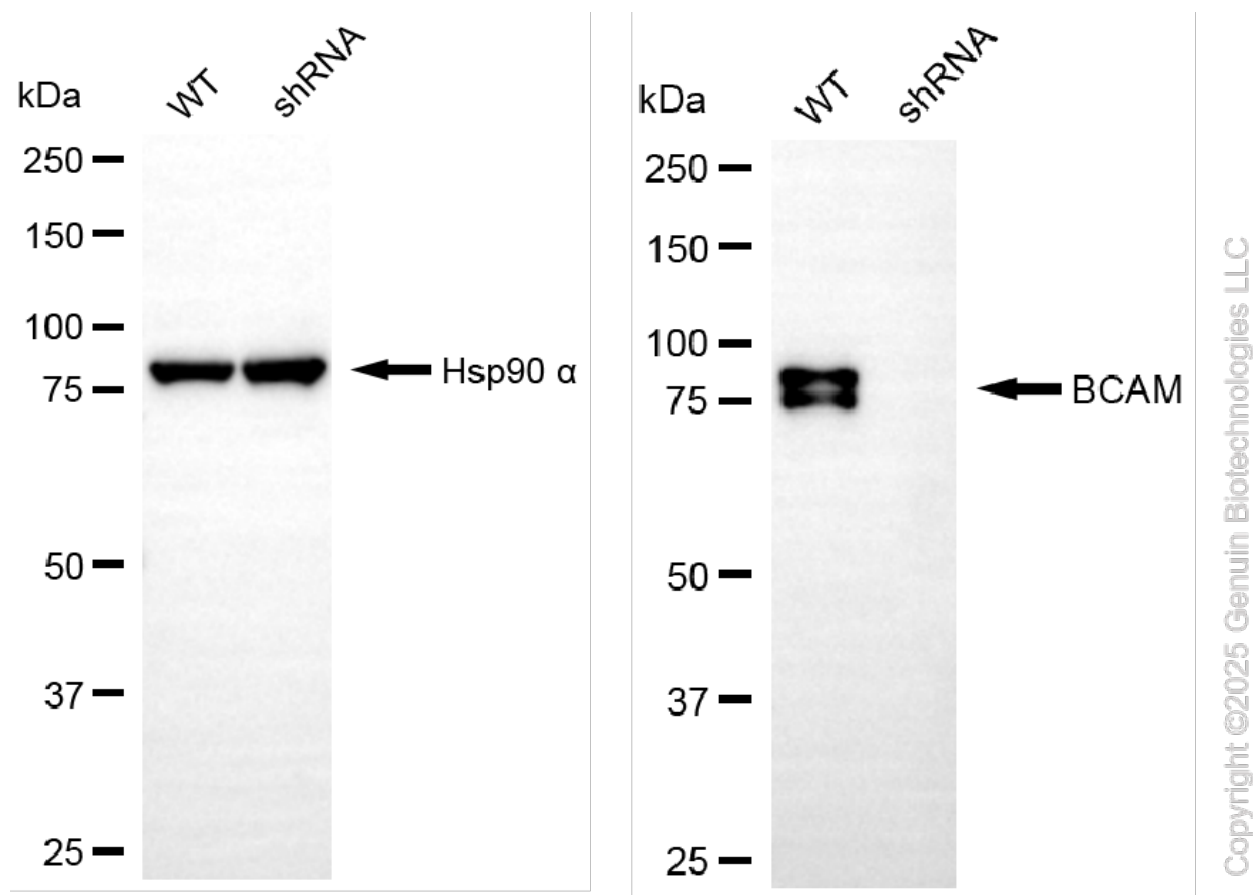
SALES@GENUINBIOTECH.COM
FAX: +1-540-855-7041

WWW.GENUINBIOTECH.COM



Copyright ©2025 Genuin Biotechnologies LLC

Western blotting analysis using anti-BCAM antibody (Cat#65437). Total cell lysates (30 μ g) from various cell lines were loaded and separated by SDS-PAGE. The blot was incubated with anti-BCAM antibody (Cat#65437, 1:5,000) and HRP-conjugated goat anti-rabbit secondary antibody (Cat#201, 1:20,000) respectively. Image was developed using NaQ™ ECL Substrate Kit (Cat#716).



Western blotting analysis using anti-BCAM antibody (Cat#65437). BCAM expression in wild-type (WT) and BCAM shRNA knockdown (KD) HeLa cells with 20 μ g of total cell lysates. Hsp90 α serves as a loading control. The blot was incubated with anti-BCAM antibody (Cat#65437, 1:5,000) and HRP-conjugated goat anti-rabbit secondary antibody (Cat#201, 1:20,000) respectively. Image was developed using NaQ™ ECL Substrate Kit (Cat#716).