

# KD-Validated Anti-LAMB1 Recombinant Rabbit Monoclonal Antibody



**Catalog #: 65445**

## Aliases

LAMB1; Laminin Subunit Beta 1; Laminin Subunit Beta-1; Laminin B1 Chain; Laminin, Beta 1; CLM; Cutis Laxa With Marfanoid Phenotype; Laminin-10 Subunit Beta; Laminin-12 Subunit Beta; Laminin-1 Subunit Beta; Laminin-2 Subunit Beta; Laminin-6 Subunit Beta; Laminin-8 Subunit Beta; LIS5

## Background

Gene Name: LAMB1

NCBI Gene Entry: [3912](#)

UniProt Entry: [P07942](#)

## Application Information

Molecular Weight: Predicted, 198 kDa; observed, 250 kDa

Clonality: Rabbit monoclonal antibody

Clone ID: 25GB1590

Species Reactivity: Human, mouse, rat

Applications Tested: Western blotting (WB), flow cytometry (FCM)

## Immunogen

A synthesized peptide derived from human LAMB1

## Isotype

Rabbit IgG

## Storage Buffer

Supplied in PBS (pH 7.4) containing 50% glycerol, and 0.02% sodium azide.

## Storage

Store at -20 °C for one year.

## Recommended Dilutions

Western Blotting (WB): 1:1,000-1:5,000

Flow Cytometry (FCM): 1:2,000

**Note:** This product is for research use only.

---

### SUPPORT

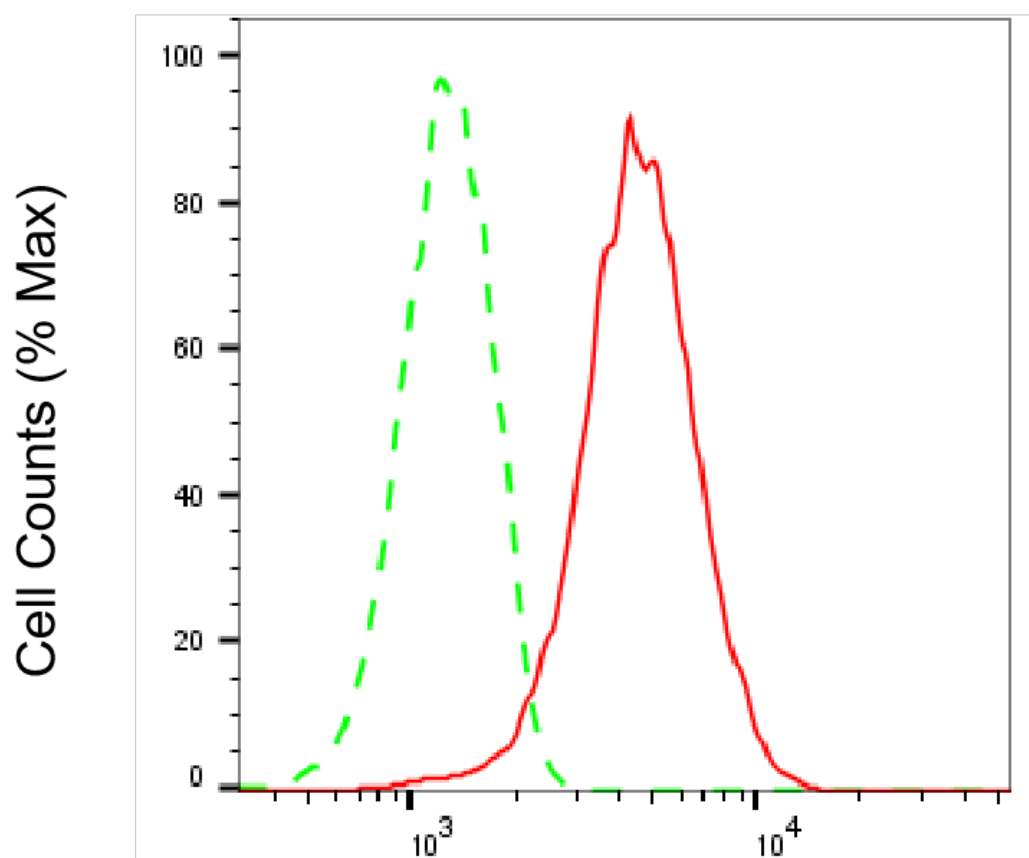
SUPPORT@GENUINBIOTECH.COM  
TEL: +1-540-855-7041

### ORDERS

SALES@GENUINBIOTECH.COM  
FAX: +1-540-855-7041

[WWW.GENUINBIOTECH.COM](http://WWW.GENUINBIOTECH.COM)

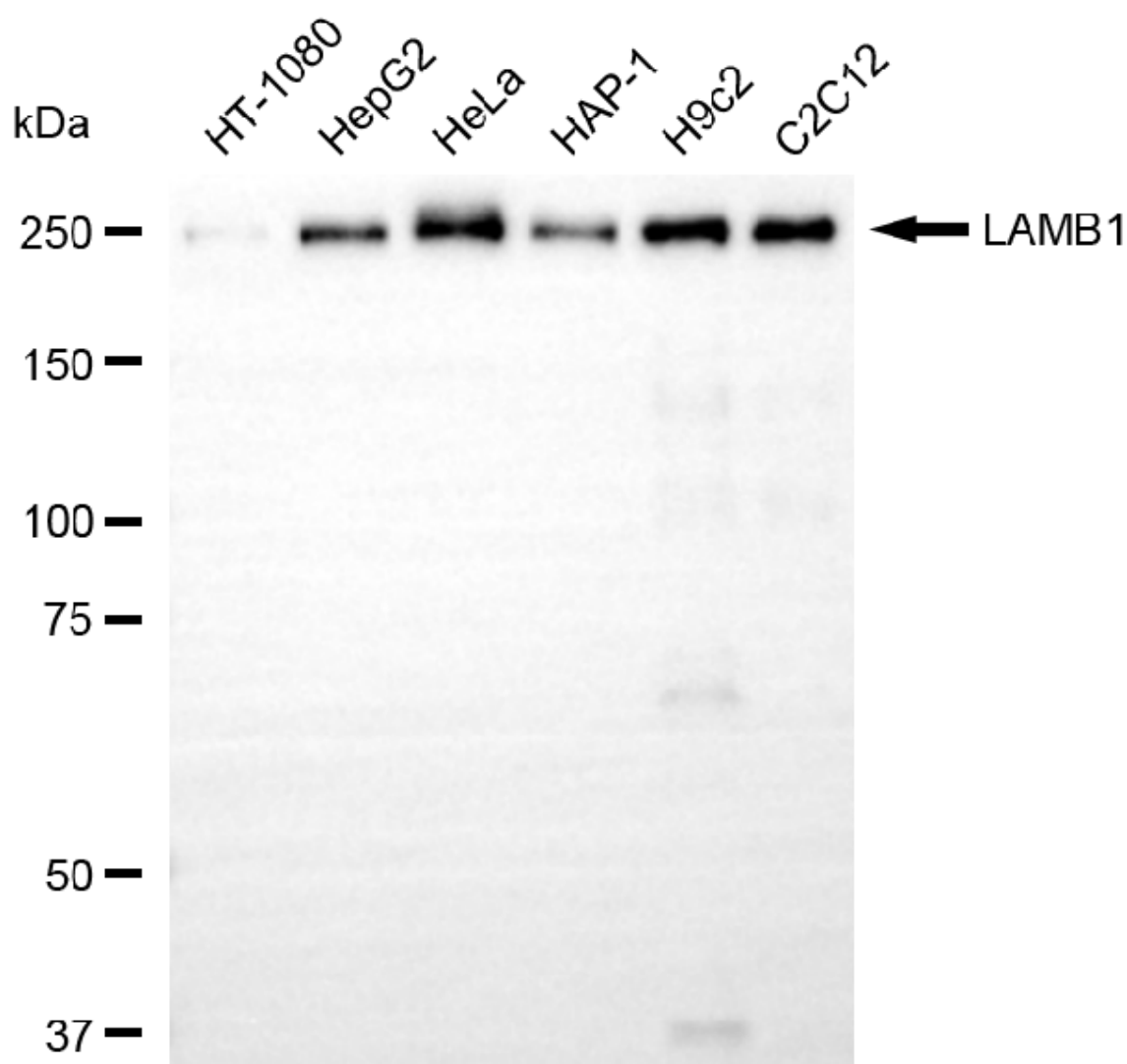
**Validation Data**



Copyright ©2025 Genuin Biotechnologies LLC

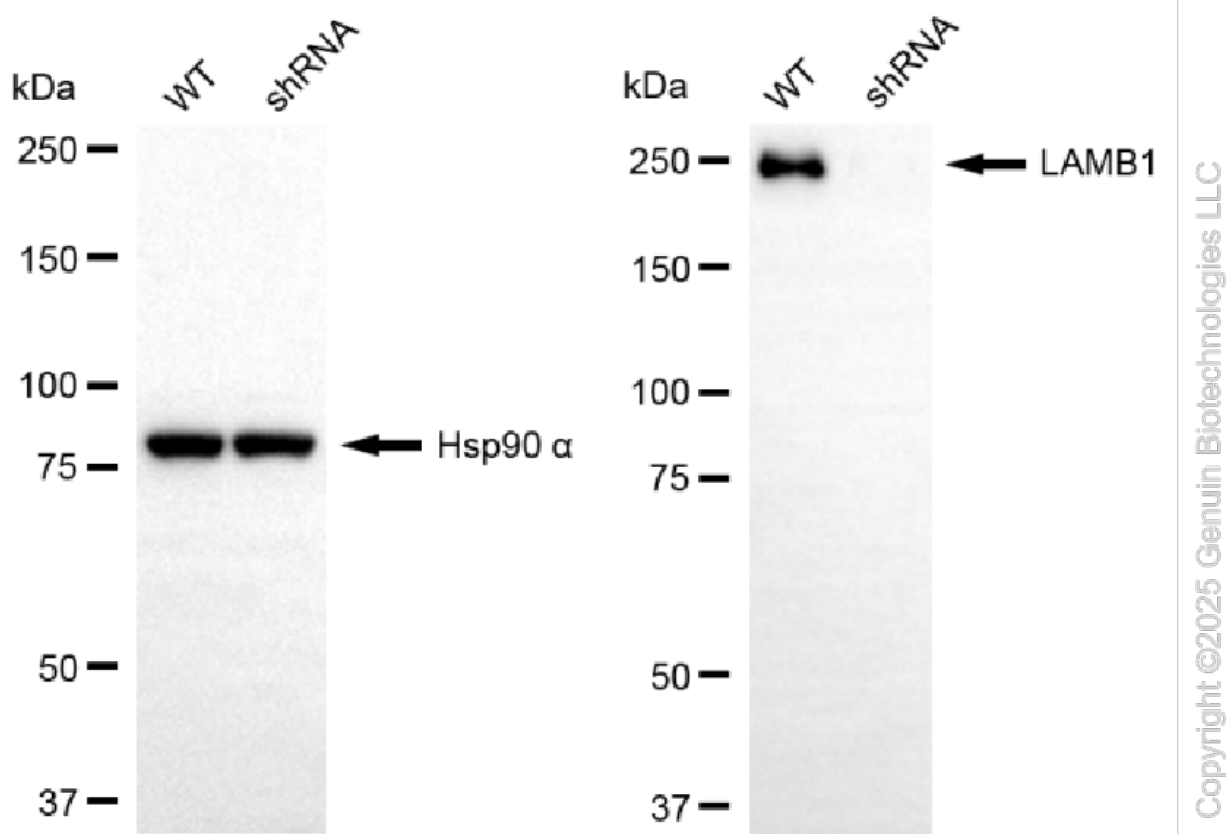
**LAMB1-Alexa Fluor® 647**

Flow cytometric analysis of LAMB1 expression in C2C12 cells using anti-LAMB1 antibody (Cat#65445, 1:2,000). Green, isotype control; red, LAMB1.

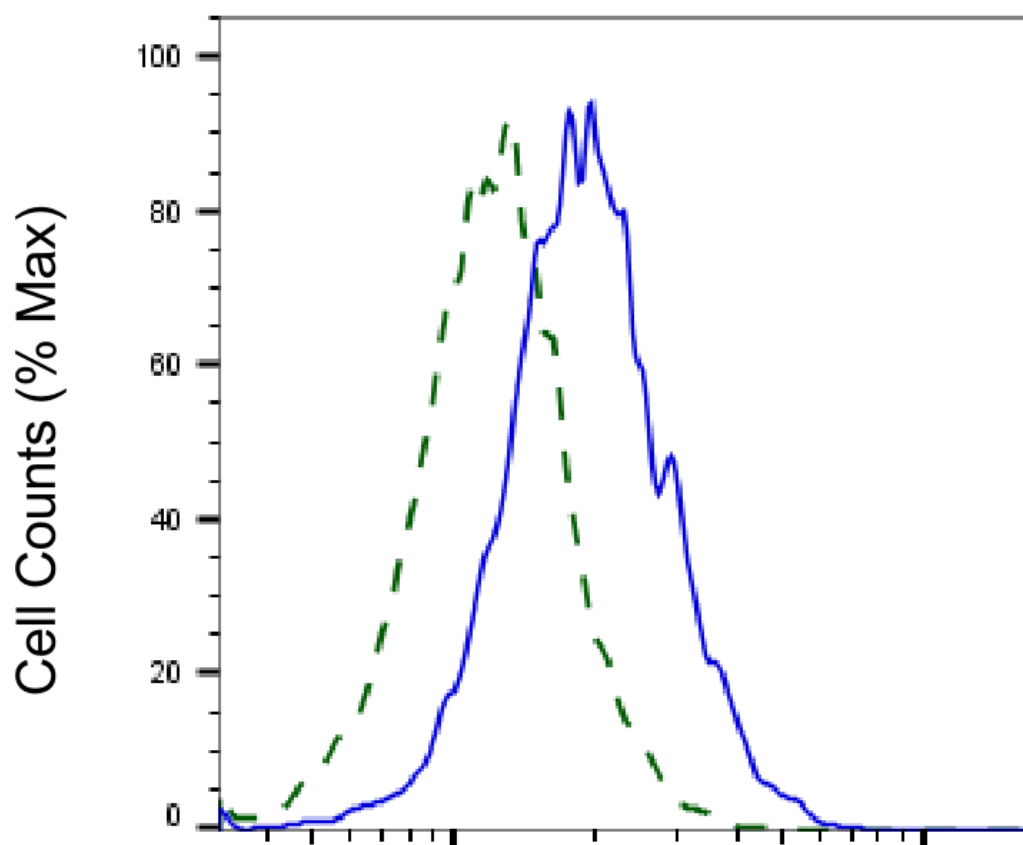


Copyright ©2025 Genuin Biotechnologies LLC

Western blotting analysis using anti-LAMB1 antibody (Cat#65445). Total cell lysates (30  $\mu$ g) from various cell lines were loaded and separated by SDS-PAGE. The blot was incubated with anti-LAMB1 antibody (Cat#65445, 1:5,000) and HRP-conjugated goat anti-rabbit secondary antibody (Cat#201, 1:20,000) respectively. Image was developed using NaQ<sup>TM</sup> ECL Substrate Kit (Cat#716).



Western blotting analysis using anti-LAMB1 antibody (Cat#65445). LAMB1 expression in wild-type (WT) and LAMB1 shRNA knockdown (KD) HeLa cells with 20 µg of total cell lysates. Hsp90 α serves as a loading control. The blot was incubated with anti-LAMB1 antibody (Cat#65445, 1:5,000) and HRP-conjugated goat anti-rabbit secondary antibody (Cat#201, 1:20,000) respectively. Image was developed using NaQ™ ECL Substrate Kit (Cat#716).



Copyright ©2025 Genuin Biotechnologies LLC

## LAMB1-Alexa Fluor® 647

Validation of LAMB1 knockdown using flow cytometry. Wild-type(WT, Blue) and knockdown(KD, Green) HeLa cells were stained with anti-LAMB1 antibody (Cat#65445, 1:2,000) and analyzed using BD flow cytometer.