

KD-Validated Anti-PTGS1 Recombinant Rabbit Monoclonal Antibody



Catalog #: 65449

Aliases

PTGS1; Prostaglandin-Endoperoxide Synthase 1; PGHS-1; COX1; Cyclooxygenase-1; PTGHS; Prostaglandin-Endoperoxide Synthase 1 (Prostaglandin G/H Synthase And Cyclooxygenase); Prostaglandin G/H Synthase 1; Prostaglandin H2 Synthase 1; PGH Synthase 1; EC 1.14.99.1; EC 1.14.99; PGG/HS; PCOX1; PES-1; PGHS1; COX-1; PHS 1; COX3; PHS1

Background

Gene Name: PTGS1

NCBI Gene Entry: [5742](#)

UniProt Entry: [P23219](#)

Application Information

Molecular Weight: Predicted, 69 kDa; observed, 69 kDa

Clonality: Rabbit monoclonal antibody

Clone ID: 25GB1610

Species Reactivity: Human, mouse

Applications Tested: Western blotting (WB), flow cytometry (FCM)

Immunogen

A synthesized peptide derived from human PTGS1

Isotype

Rabbit IgG

Storage Buffer

Supplied in PBS (pH 7.4) containing 50% glycerol, and 0.02% sodium azide.

Storage

Store at -20 °C for one year.

Recommended Dilutions

Western Blotting (WB): 1:1,000-1:5,000

Flow Cytometry (FCM): 1:2,000

Note: This product is for research use only.

SUPPORT

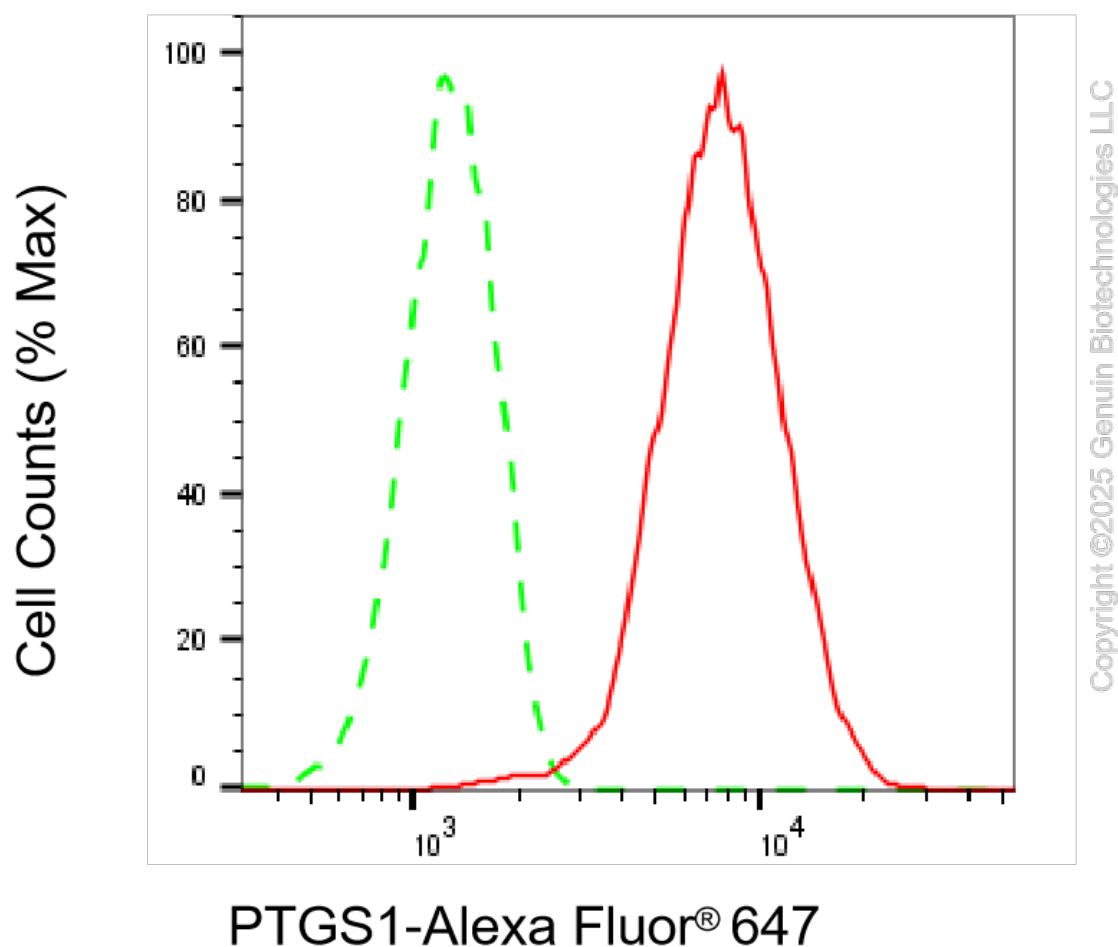
SUPPORT@GENUINBIOTECH.COM
TEL: +1-540-855-7041

ORDERS

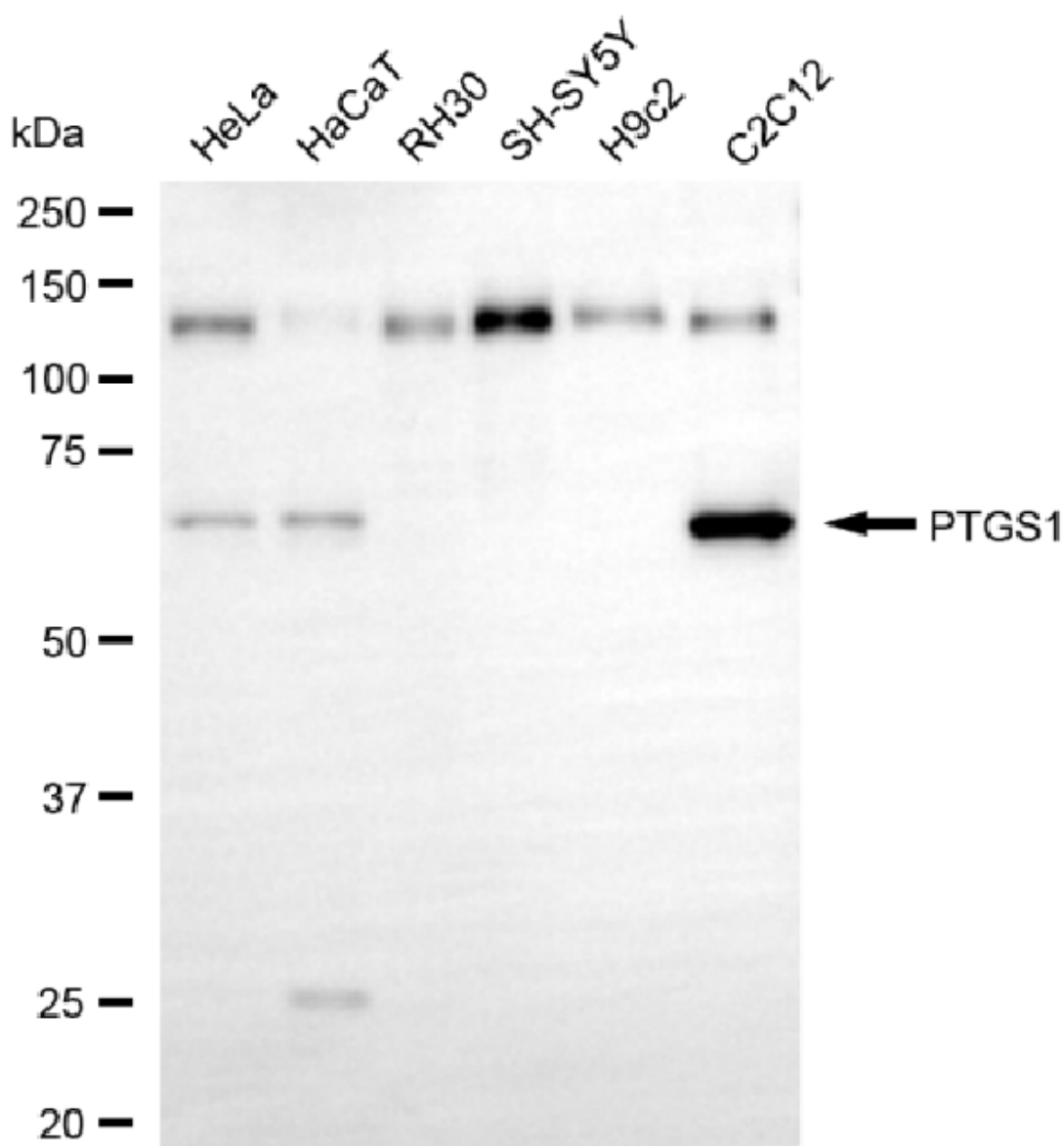
SALES@GENUINBIOTECH.COM
FAX: +1-540-855-7041

WWW.GENUINBIOTECH.COM

Validation Data



Flow cytometric analysis of PTGS1 expression in C2C12 cells using anti-PTGS1 antibody (Cat#65449, 1:2,000). Green, isotype control; red, PTGS1.

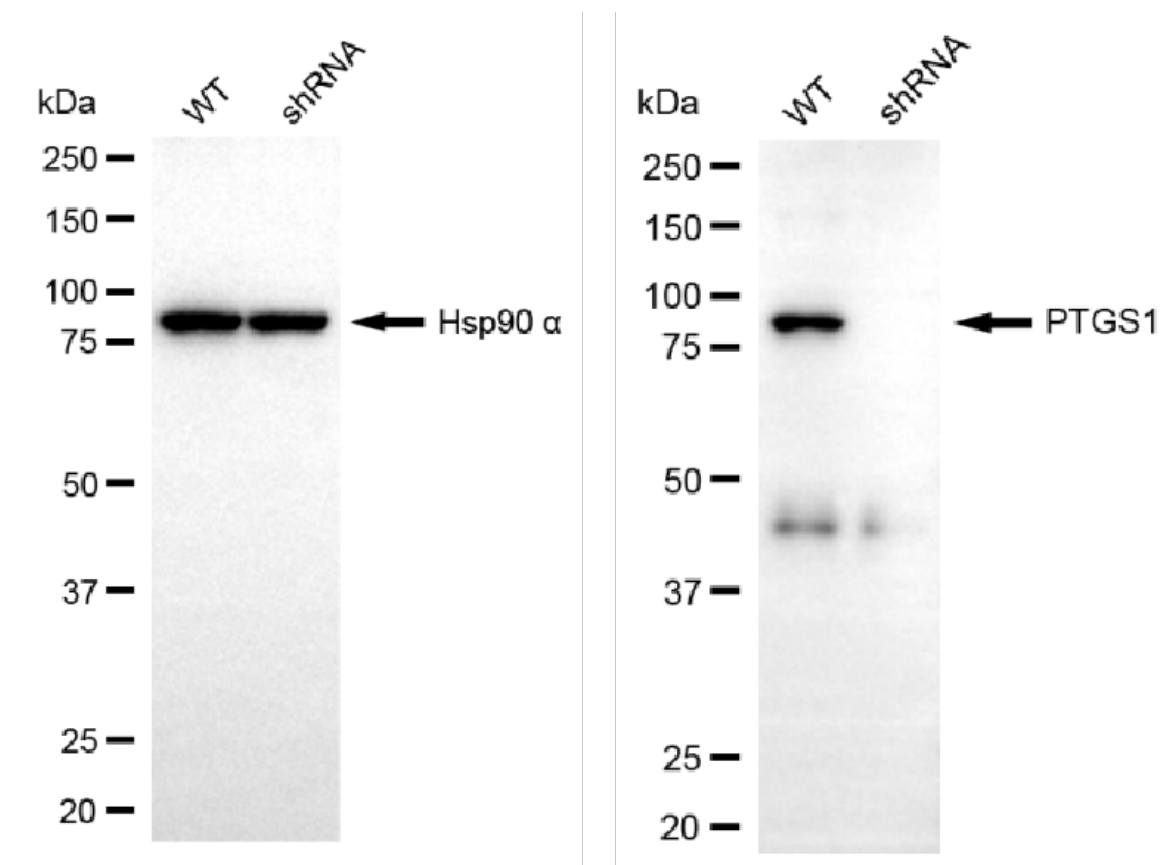


Copyright ©2025 Genuin Biotechnologies LLC

Western blotting analysis using anti-PTGS1 antibody (Cat#65449). Total cell lysates (30 µg) from various cell lines were loaded and separated by SDS-PAGE. The blot was incubated with anti-PTGS1 antibody (Cat#65449, 1:5,000) and HRP-conjugated goat anti-rabbit secondary antibody (Cat#201, 1:20,000) respectively. Image was developed using FeQ™ ECL Substrate Kit (Cat#226).

KD-Validated Anti-PTGS1 Recombinant Rabbit Monoclonal Antibody

PAGE 4



Copyright ©2025 Genuin Biotechnologies LLC

Western blotting analysis using anti-PTGS1 antibody (Cat#65449). PTGS1 expression in wild-type (WT) and PTGS1 shRNA knockdown (KD) HeLa cells with 20 µg of total cell lysates. Hsp90 α serves as a loading control. The blot was incubated with anti-PTGS1 antibody (Cat#65449, 1:5,000) and HRP-conjugated goat anti-rabbit secondary antibody (Cat#201, 1:20,000) respectively. Image was developed using FeQ™ ECL Substrate Kit (Cat#226).

SUPPORT

SUPPORT@GENUINBIOTECH.COM
TEL: +1-540-855-7041

ORDERS

SALES@GENUINBIOTECH.COM
FAX: +1-540-855-7041

WWW.GENUINBIOTECH.COM