

# KD-Validated Anti-KDM3A Mouse Monoclonal Antibody



**Catalog #: 65450**

## Aliases

KDM3A; Lysine Demethylase 3A; TSGA; KIAA0742; JHMD2A; JMJD1A; JMJD1; JmjC Domain-Containing Histone Demethylation Protein 2A; Jumonji C Domain-Containing Histone Demethylase 2A; [Histone H3]-Dimethyl-L-Lysine(9) Demethylase 3A; Jumonji Domain-Containing Protein 1A; Lysine (K)-Specific Demethylase 3A; Lysine-Specific Demethylase 3A; JHDM2A; Jumonji Domain Containing 1A; Jumonji Domain Containing 1; Testis-Specific Protein A; EC 1.14.11.65; EC 1.14.11

## Background

Gene Name: KDM3A

NCBI Gene Entry: [55818](#)

UniProt Entry: [Q9Y4C1](#)

## Application Information

Molecular Weight: Predicted, 147 kDa; observed, 150 kDa

Clonality: Mouse monoclonal antibody

Clone ID: 25GB1615

Species Reactivity: Human, mouse

Applications Tested: Western blotting (WB)

## Immunogen

Recombinant protein of human KDM3A

## Isotype

Mouse IgG2a

## Storage Buffer

Supplied in PBS (pH 7.4) containing 50% glycerol, and 0.02% sodium azide.

## Storage

Store at -20 °C for one year.

## Recommended Dilutions

Western Blotting (WB): 1:400-1:2,000

---

### SUPPORT

SUPPORT@GENUINBIOTECH.COM  
TEL: +1-540-855-7041

### ORDERS

SALES@GENUINBIOTECH.COM  
FAX: +1-540-855-7041

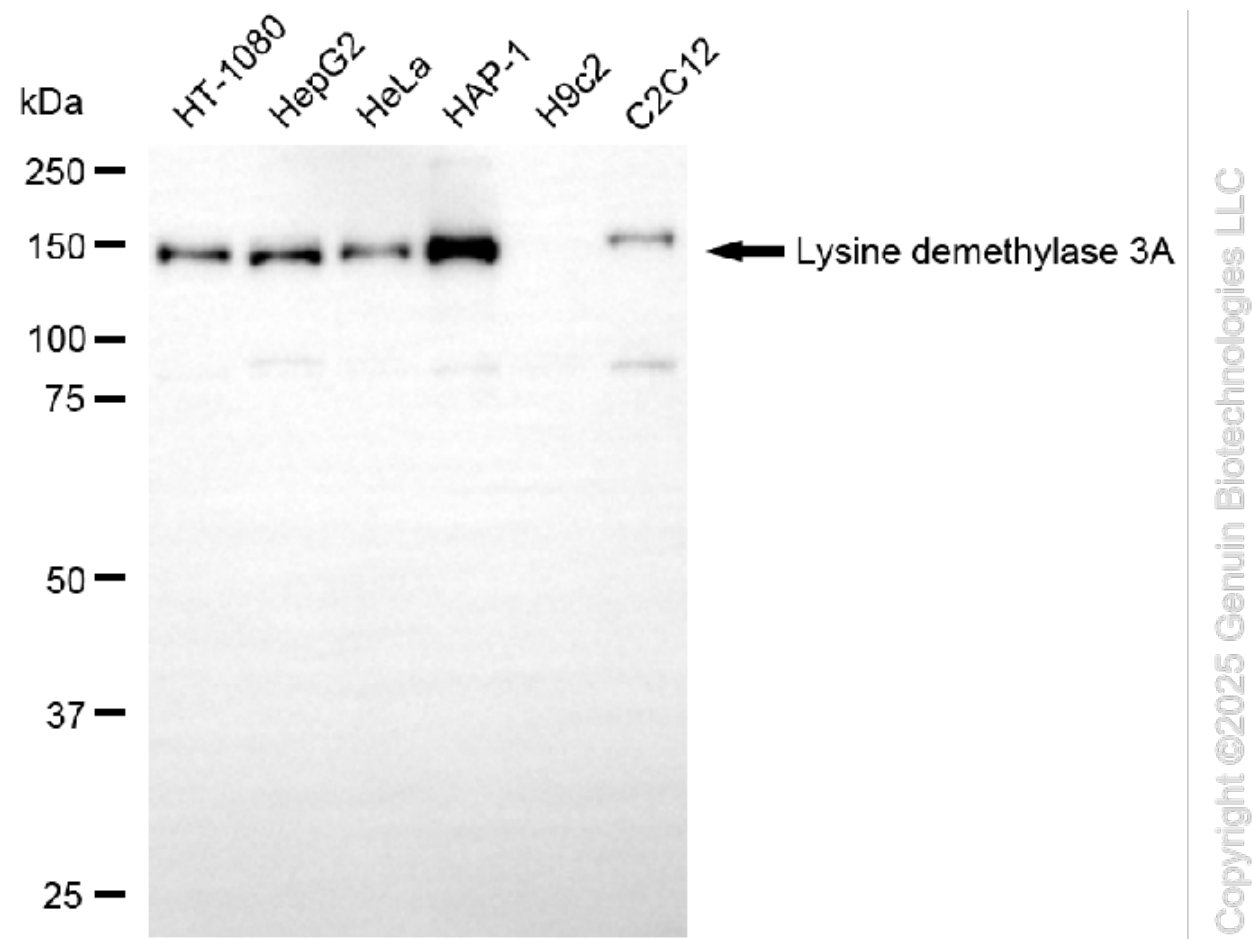
[WWW.GENUINBIOTECH.COM](http://WWW.GENUINBIOTECH.COM)

## KD-Validated Anti-KDM3A Mouse Monoclonal Antibody

PAGE 2

**Note:** This product is for research use only.

### Validation Data



Western blotting analysis using anti-lysine demethylase 3A antibody (Cat#65450). Total cell lysates (30 µg) from various cell lines were loaded and separated by SDS-PAGE. The blot was incubated with anti-lysine demethylase 3A antibody (Cat#65450, 1:2,000) and HRP-conjugated goat anti-mouse secondary antibody (Cat#101, 1:20,000) respectively. Image was developed using FeQ™ ECL Substrate Kit (Cat#226).

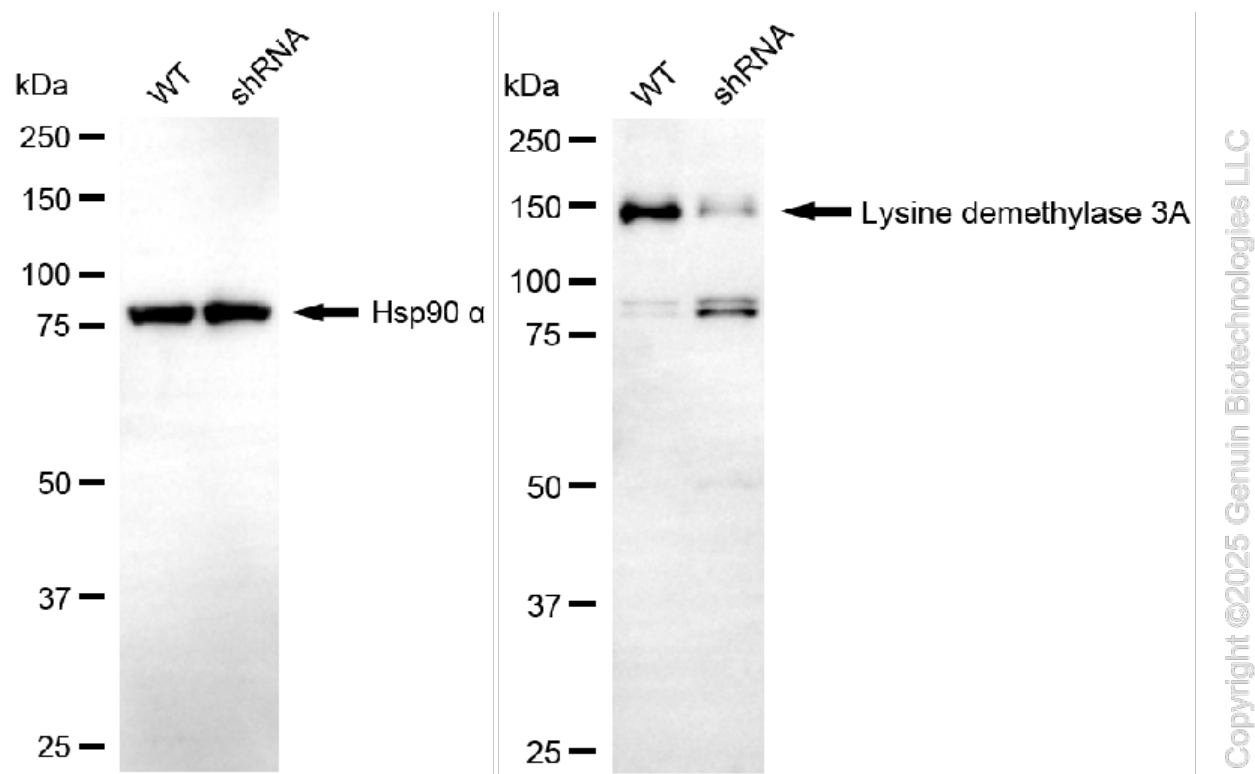
#### SUPPORT

SUPPORT@GENUINBIOTECH.COM  
TEL: +1-540-855-7041

#### ORDERS

SALES@GENUINBIOTECH.COM  
FAX: +1-540-855-7041

WWW.GENUINBIOTECH.COM



Western blotting analysis using anti-lysine demethylase 3A antibody (Cat#65450). Lysine demethylase 3A expression in wild-type (WT) and lysine demethylase 3A (KDM3A) shRNA knockdown (KD) HeLa cells with 20  $\mu$ g of total cell lysates. Hsp90  $\alpha$  serves as a loading control. The blot was incubated with anti-lysine demethylase 3A antibody (Cat#65450, 1:2,000) and HRP-conjugated goat anti-mouse secondary antibody (Cat#101, 1:20,000) respectively. Image was developed using FeQ™ ECL Substrate Kit (Cat#226).