

# KD-Validated Anti-ITGB1BP1 Mouse Oligoclonal Antibody



**Catalog #: 65454**

## Aliases

ITGB1BP1; Integrin Subunit Beta 1 Binding Protein 1; ICAP1; Integrin Cytoplasmic Domain-Associated Protein 1; ICAP-1alpha; ICAP-1A; ICAP-1B; ICAP1A; ICAP1B; Integrin Cytoplasmic Domain-Associated Protein 1-Alpha; Integrin Cytoplasmic Domain-Associated Protein 1-Beta; Integrin Beta-1-Binding Protein 1; Bodenin; Integrin Beta 1 Binding Protein 1; ICAP-1

## Background

Gene Name: ITGB1BP1

NCBI Gene Entry: [9270](#)

UniProt Entry: [O14713](#)

## Application Information

Molecular Weight: Predicted, 22 kDa; observed, 20 kDa

Clonality: Mouse oligoclonal antibody

Species Reactivity: Human, mouse, rat

Applications Tested: Western blotting (WB), flow cytometry (FCM)

## Immunogen

Recombinant protein of human ITGB1BP1

## Isotype

Mouse IgG

## Storage Buffer

Supplied in PBS (pH 7.4) containing 50% glycerol, and 0.02% sodium azide.

## Storage

Store at -20 °C for one year.

## Recommended Dilutions

Western Blotting (WB): 1:400-1:2,000

Flow Cytometry (FCM): 1:2,000

**Note:** This product is for research use only.

---

### SUPPORT

SUPPORT@GENUINBIOTECH.COM  
TEL: +1-540-855-7041

### ORDERS

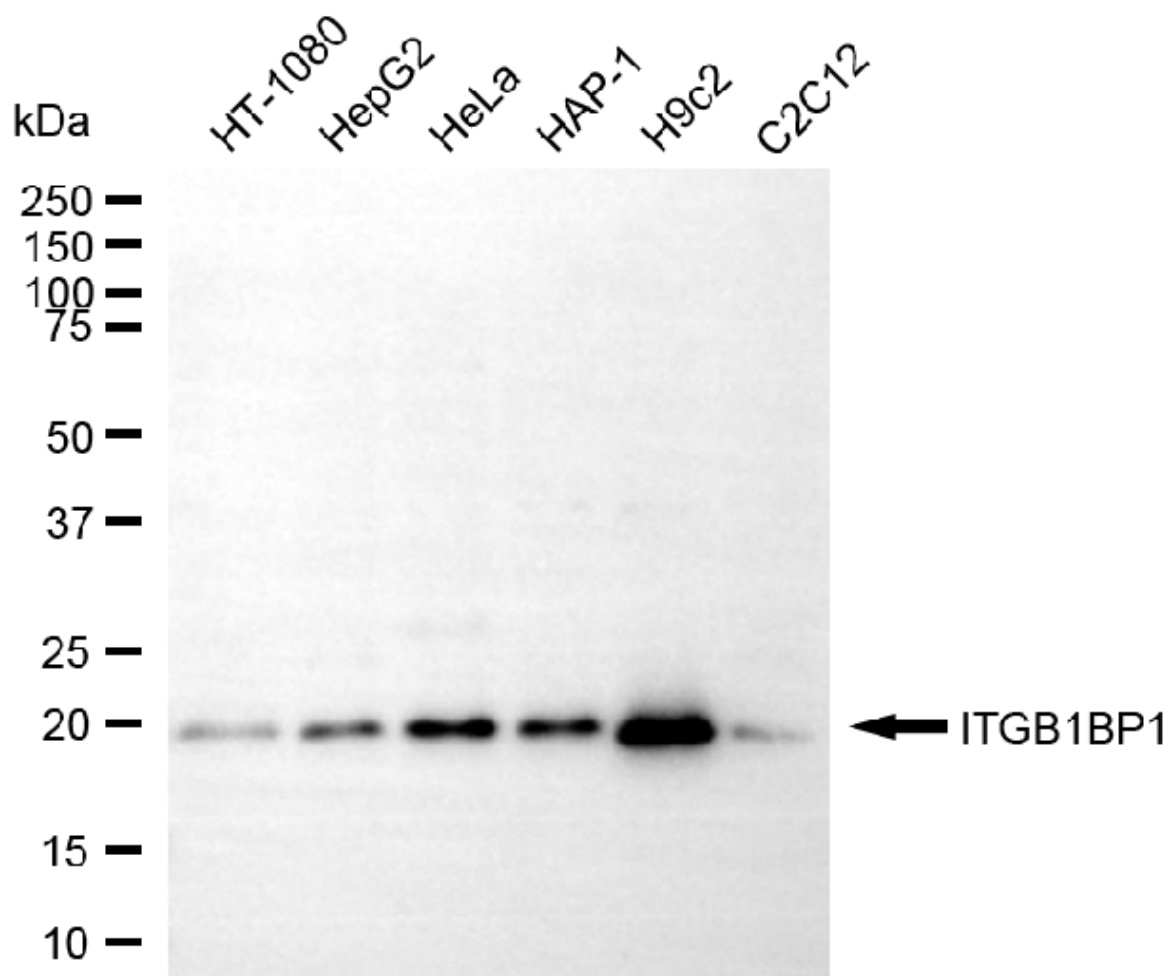
SALES@GENUINBIOTECH.COM  
FAX: +1-540-855-7041

[WWW.GENUINBIOTECH.COM](http://WWW.GENUINBIOTECH.COM)

## KD-Validated Anti-ITGB1BP1 Mouse Oligoclonal Antibody

PAGE 2

### Validation Data



Western blotting analysis using anti-ITGB1BP1 antibody (Cat#65454). Total cell lysates (30 µg) from various cell lines were loaded and separated by SDS-PAGE. The blot was incubated with anti-ITGB1BP1 antibody (Cat#65454, 1:2,000) and HRP-conjugated goat anti-mouse secondary antibody (Cat#101, 1:20,000) respectively. Image was developed using NaQ™ ECL Substrate Kit (Cat#716).

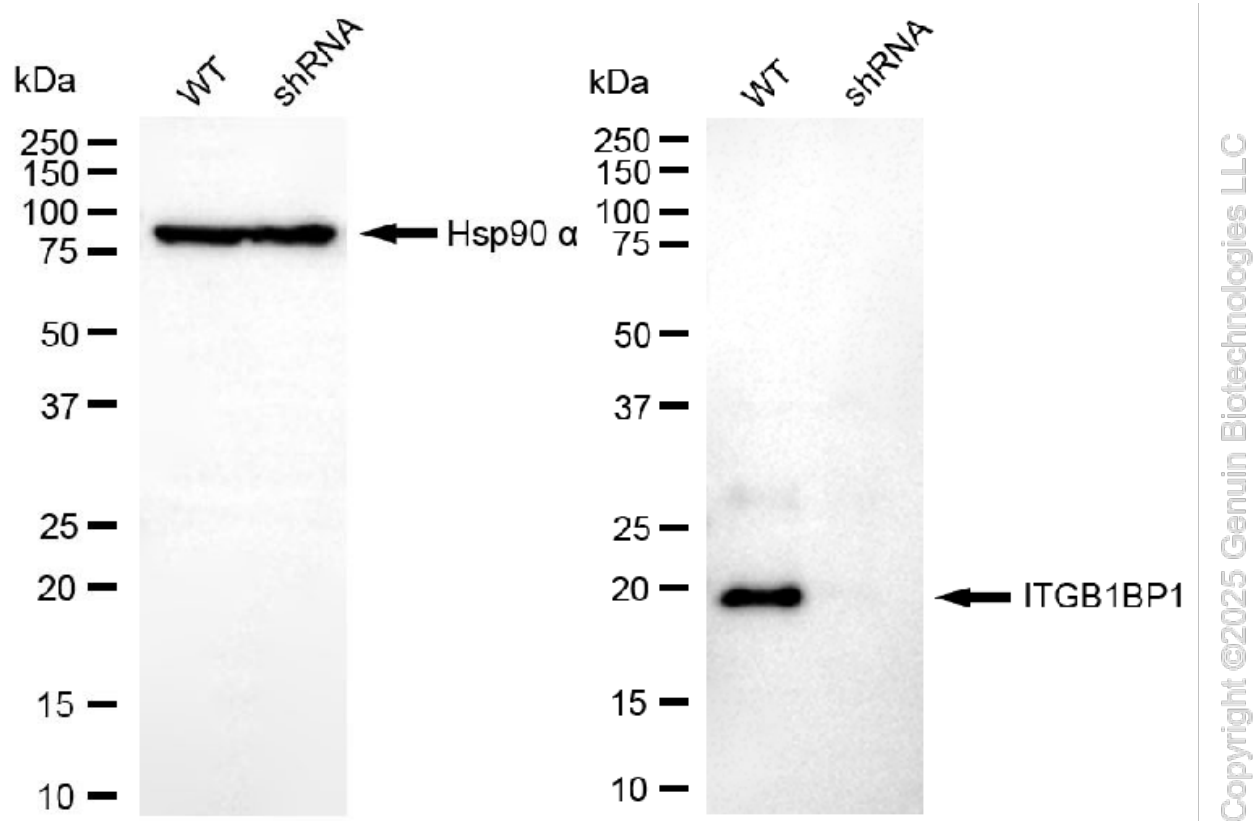
#### SUPPORT

SUPPORT@GENUINBIOTECH.COM  
TEL: +1-540-855-7041

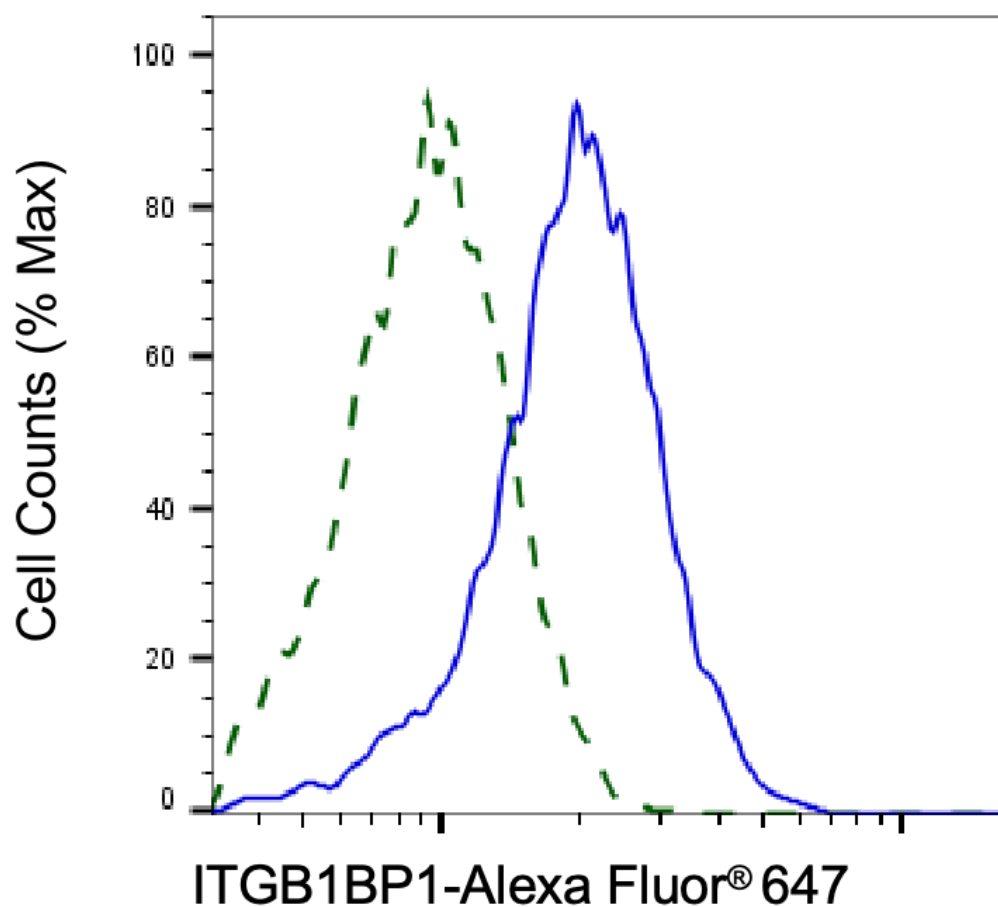
#### ORDERS

SALES@GENUINBIOTECH.COM  
FAX: +1-540-855-7041

WWW.GENUINBIOTECH.COM



Western blotting analysis using anti-ITGB1BP1 antibody (Cat#65454). ITGB1BP1 expression in wild-type (WT) and ITGB1BP1 shRNA knockdown (KD) HeLa cells with 30 µg of total cell lysates. Hsp90 α serves as a loading control. The blot was incubated with anti-ITGB1BP1 antibody (Cat#65454, 1:2,000) and HRP-conjugated goat anti-mouse secondary antibody (Cat#101, 1:20,000) respectively. Image was developed using FeQ™ ECL Substrate Kit (Cat#226).



Copyright ©2025 Genuin Biotechnologies LLC

Validation of ITGB1BP1 knockdown using flow cytometry. Wild-type(WT, Blue) and knockdown(KD, Green) HeLa cells were stained with anti-ITGB1BP1 antibody (Cat#65454, 1:2,000) and analyzed using BD flow cytometer.