

# KD-Validated Anti-CANT1 Mouse Oligoclonal Antibody



**Catalog #: 65468**

## Aliases

CANT1; Calcium Activated Nucleotidase 1; SCAN-1; SHAPY; Soluble Ca-Activated Nucleotidase, Isozyme 1; Putative NF-Kappa-B-Activating Protein 107; Soluble Calcium-Activated Nucleotidase 1; Putative MAPK-Activating Protein PM09; Apyrase 1 Homolog (C. Lectularius); Apyrase Homolog; Micromelic Dwarfism With Vertebral And Metaphyseal Abnormalities And Advanced Carpotarsal Ossification; Ca<sup>2+</sup>-Dependent Endoplasmic Reticulum Nucleoside Diphosphatase; Soluble Calcium-Activated Nucleotidase SCAN-1; EC 3.6.1.6; DBQD1; SCAN1; DBQD; EDM7

## Background

Gene Name: CANT1

NCBI Gene Entry: [124583](#)

UniProt Entry: [Q8WVQ1](#)

## Application Information

Molecular Weight: Predicted, 45 kDa; observed, 36-40 kDa

Clonality: Mouse oligoclonal antibody

Species Reactivity: Human, mouse

Applications Tested: Western blotting (WB), flow cytometry (FCM)

## Immunogen

Recombinant protein of human CANT1

## Isotype

Mouse IgG

## Storage Buffer

Supplied in PBS (pH 7.4) containing 50% glycerol, and 0.02% sodium azide.

## Storage

Store at -20 °C for one year.

## Recommended Dilutions

Western Blotting (WB): 1:400-1:2,000

Flow Cytometry (FCM): 1:2,000

---

### SUPPORT

SUPPORT@GENUINBIOTECH.COM  
TEL: +1-540-855-7041

### ORDERS

SALES@GENUINBIOTECH.COM  
FAX: +1-540-855-7041

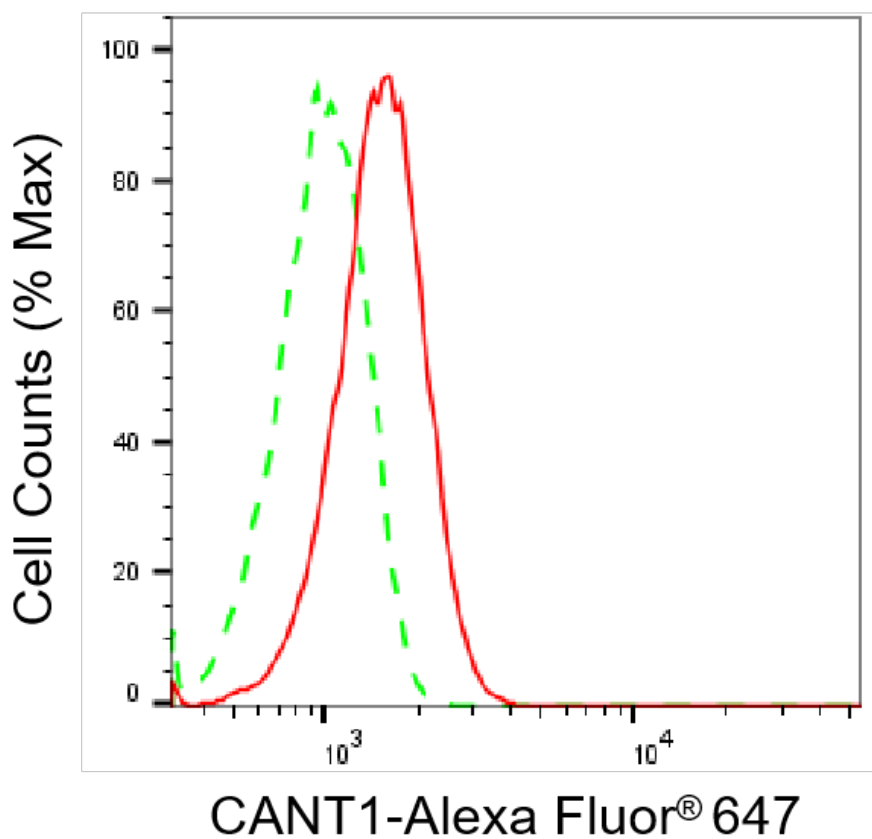
[WWW.GENUINBIOTECH.COM](http://WWW.GENUINBIOTECH.COM)

## KD-Validated Anti-CANT1 Mouse Oligoclonal Antibody

PAGE 2

**Note:** This product is for research use only.

### Validation Data



Copyright ©2025 Genuin Biotechnologies LLC

Flow cytometric analysis of CANT1 expression in C2C12 cells using anti-CANT1 antibody (Cat#65468, 1:2,000). Green, isotype control; red, CANT1.

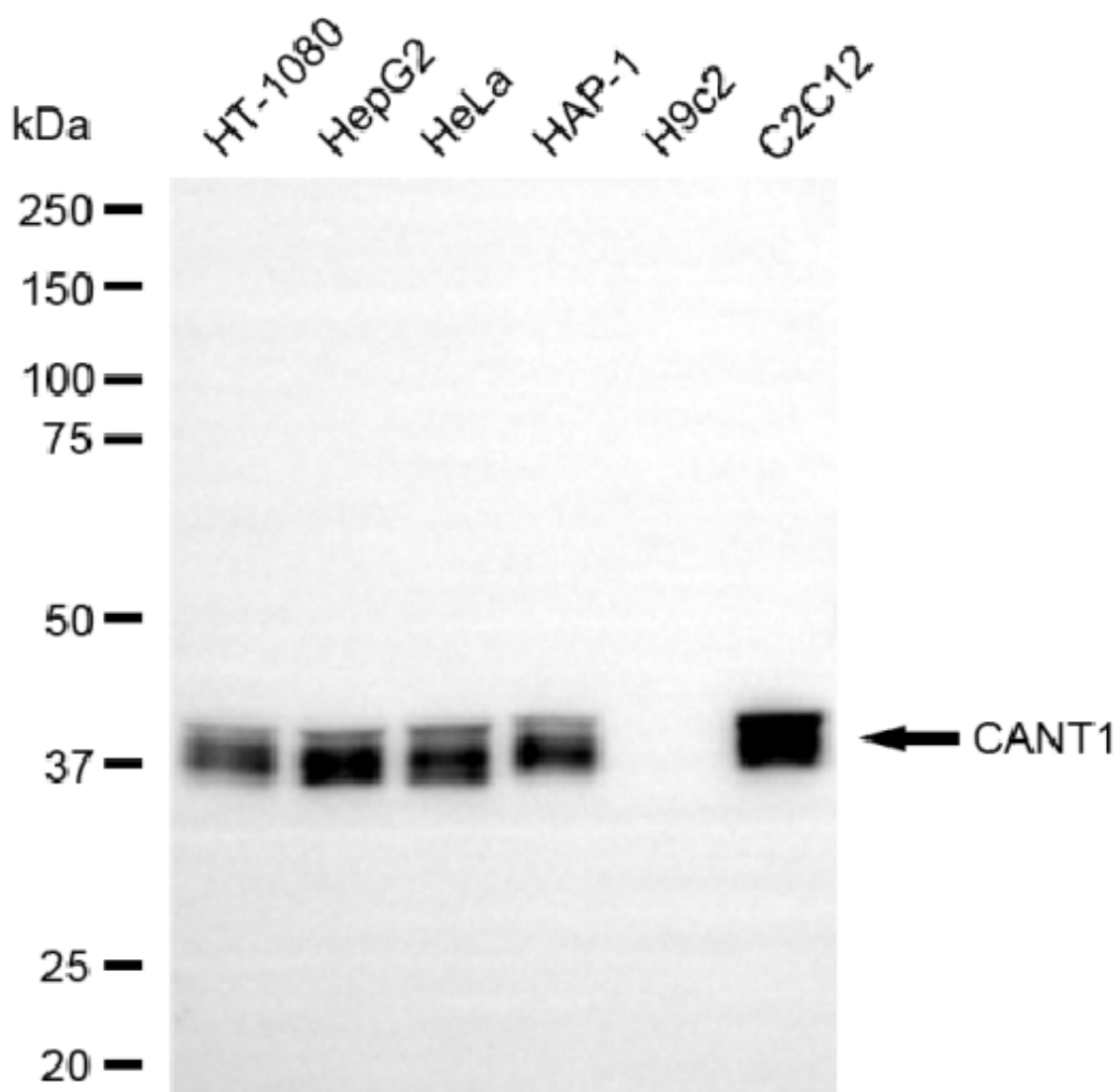
#### SUPPORT

SUPPORT@GENUINBIOTECH.COM  
TEL: +1-540-855-7041

#### ORDERS

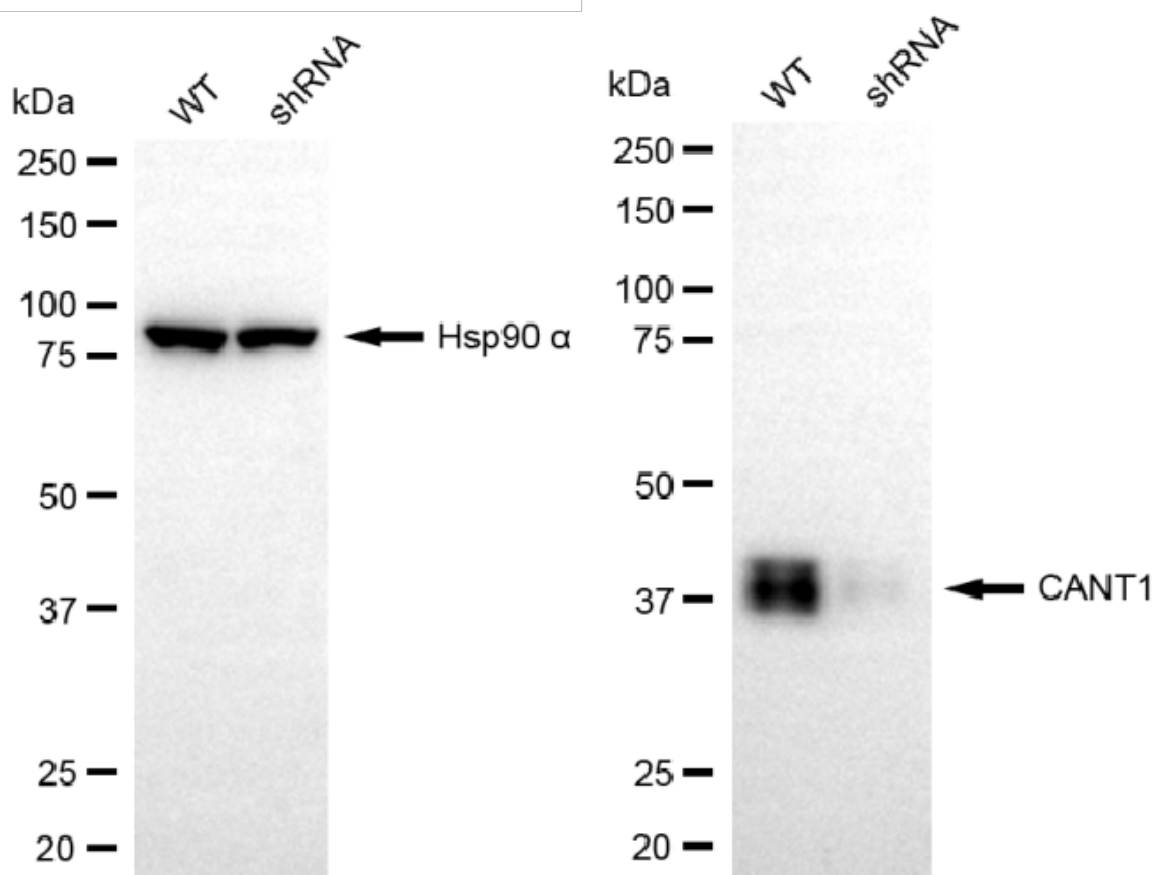
SALES@GENUINBIOTECH.COM  
FAX: +1-540-855-7041

[WWW.GENUINBIOTECH.COM](http://WWW.GENUINBIOTECH.COM)



Copyright ©2025 Genuin Biotechnologies LLC

Western blotting analysis using anti-CANT1 antibody (Cat#65468). Total cell lysates (30  $\mu$ g) from various cell lines were loaded and separated by SDS-PAGE. The blot was incubated with anti-CANT1 antibody (Cat#65468, 1:2,500) and HRP-conjugated goat anti-mouse secondary antibody (Cat#101, 1:20,000) respectively. Image was developed using NaQ™ ECL Substrate Kit (Cat#716).



Western blotting analysis using anti-CANT1 antibody (Cat#65468). CANT1 expression in wild-type (WT) and CANT1 shRNA knockdown (KD) HeLa cells with 20 µg of total cell lysates. Hsp90 α serves as a loading control. The blot was incubated with anti-CANT1 antibody (Cat#65468, 1:2,500) and HRP-conjugated goat anti-mouse secondary antibody (Cat#101, 1:20,000) respectively. Image was developed using FeQ™ ECL Substrate Kit (Cat#226).