

KD-Validated Anti-SWAP70 Mouse Monoclonal Antibody



Catalog #: 65553

Aliases

SWAP70; Switching B Cell Complex Subunit SWAP70; SWAP-70; Switch-Associated Protein 70; KIAA0640; SWAP Switching B-Cell Complex 70kDa Subunit; SWAP Switching B-Cell Complex Subunit 70; HSPC321

Background

Gene Name: SWAP70

NCBI Gene Entry: [23075](#)

UniProt Entry: [Q9UH65](#)

Application Information

Molecular Weight: Predicted, 69 kDa; observed, 70 kDa

Clonality: Mouse monoclonal antibody

Clone ID: 25GB4225

Species Reactivity: Human, mouse, rat

Applications Tested: Western blotting (WB)

Immunogen

Recombinant protein of human SWAP70

Isotype

Mouse IgG2b

Storage Buffer

Supplied in PBS (pH 7.4) containing 50% glycerol, and 0.02% sodium azide.

Storage

Store at -20 °C for one year.

Recommended Dilutions

Western Blotting (WB): 1:1,000-1:5,000

Note: This product is for research use only.

Validation Data

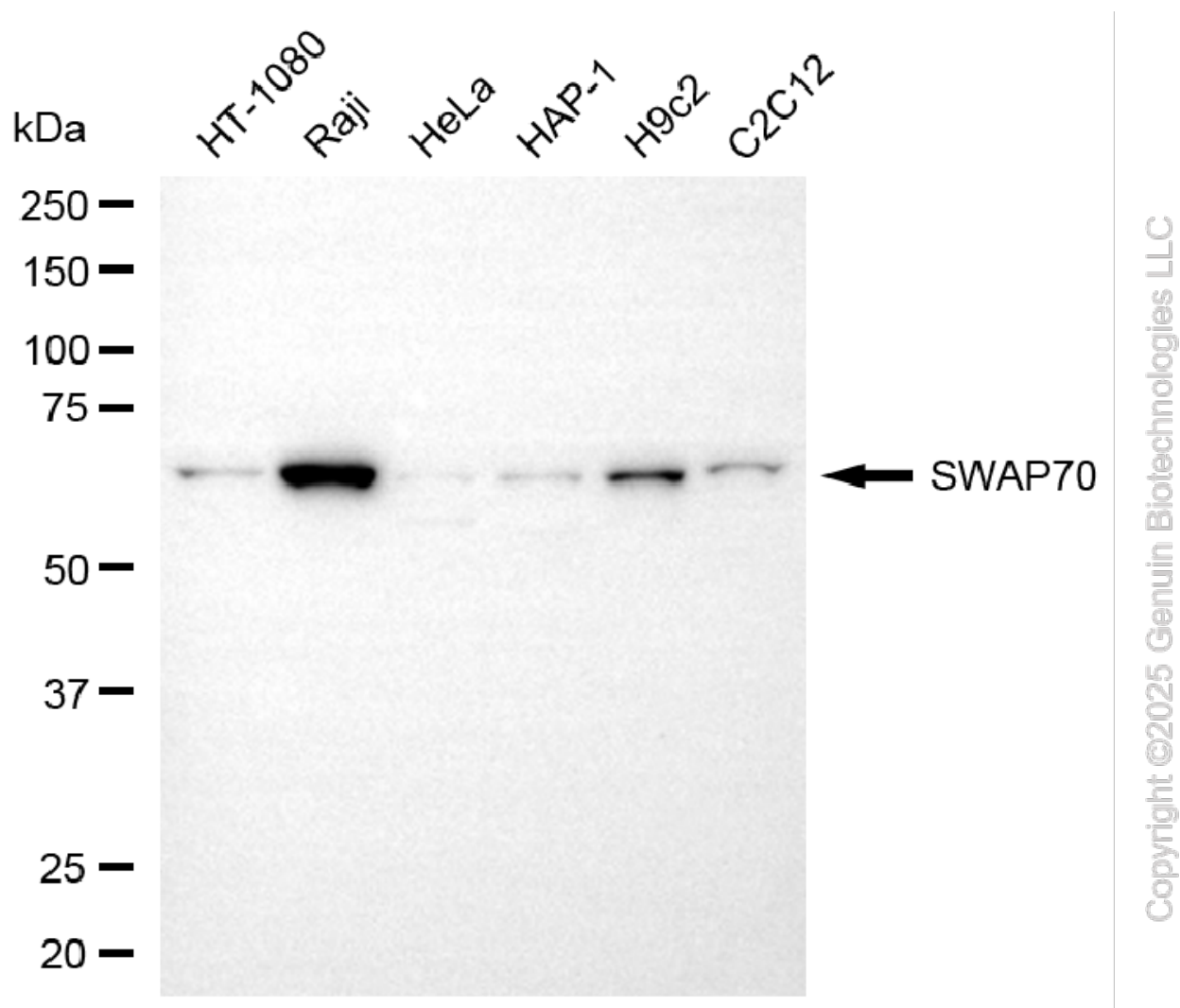
SUPPORT

SUPPORT@GENUINBIOTECH.COM
TEL: +1-540-855-7041

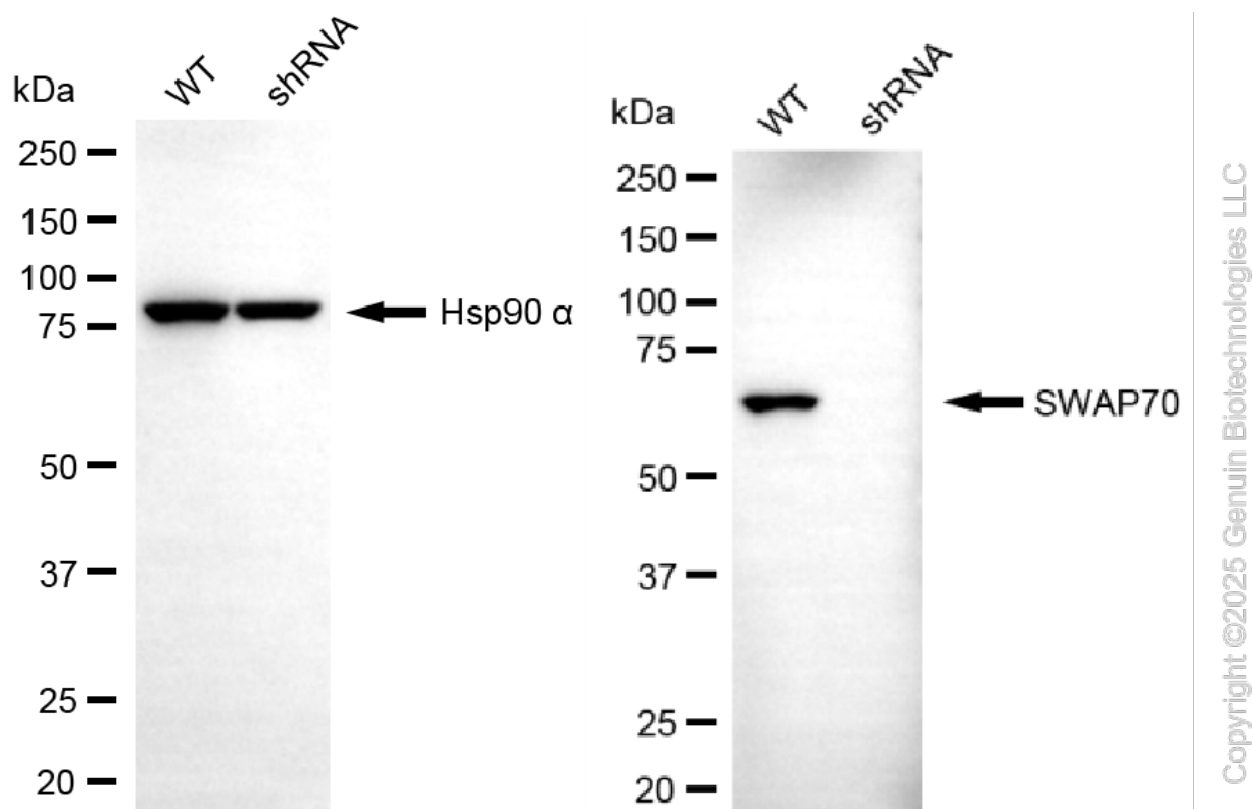
ORDERS

SALES@GENUINBIOTECH.COM
FAX: +1-540-855-7041

WWW.GENUINBIOTECH.COM



Western blotting analysis using anti-SWAP70 antibody (Cat#65553). Total cell lysates (30 μ g) from various cell lines were loaded and separated by SDS-PAGE. The blot was incubated with anti-SWAP70 antibody (Cat#65553, 1:5,000) and HRP-conjugated goat anti-mouse secondary antibody (Cat#101, 1:20,000) respectively. Image was developed using NaQ™ ECL Substrate Kit (Cat#716).



Western blotting analysis using anti-SWAP70 antibody (Cat#65553). SWAP70 expression in wild-type (WT) and SWAP70 shRNA knockdown (KD) HT-1080 cells with 20 µg of total cell lysates. Hsp90 α serves as a loading control. The blot was incubated with anti-SWAP70 antibody (Cat#65553, 1:5,000) and HRP-conjugated goat anti-mouse secondary antibody (Cat#101, 1:20,000) respectively. Image was developed using FeQ™ ECL Substrate Kit (Cat#226).