

KD-Validated Anti-PREB Rabbit Monoclonal Antibody



Catalog #: 65556

Aliases

PREB; Prolactin Regulatory Element Binding; SEC12; Prolactin Regulatory Element-Binding Protein; Guanine Nucleotide-Exchange Factor SEC12; Mammalian Guanine Nucleotide Exchange Factor MSec12

Background

Gene Name: PREB

NCBI Gene Entry: [10113](#)

UniProt Entry: [Q9HCU5](#)

Application Information

Molecular Weight: Predicted, 45 kDa; observed, 45 kDa

Clonality: Rabbit monoclonal antibody

Clone ID: 25GB4240

Species Reactivity: Human

Applications Tested: Western blotting (WB), flow cytometry (FCM)

Immunogen

Recombinant protein of human PREB

Isotype

Rabbit IgG

Storage Buffer

Supplied in PBS (pH 7.4) containing 50% glycerol, and 0.02% sodium azide.

Storage

Store at -20 °C for one year.

Recommended Dilutions

Western Blotting (WB): 1:1,000-1:5,000

Flow Cytometry (FCM): 1:2,000

Note: This product is for research use only.

Validation Data

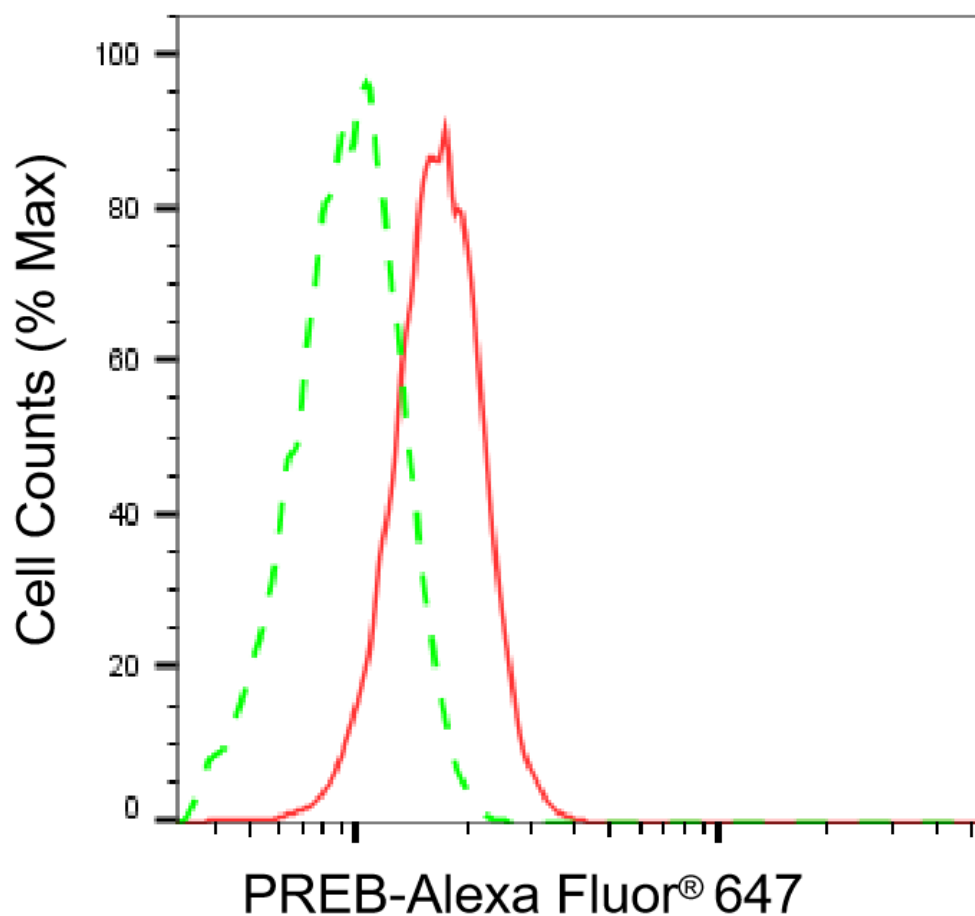
SUPPORT

SUPPORT@GENUINBIOTECH.COM
TEL: +1-540-855-7041

ORDERS

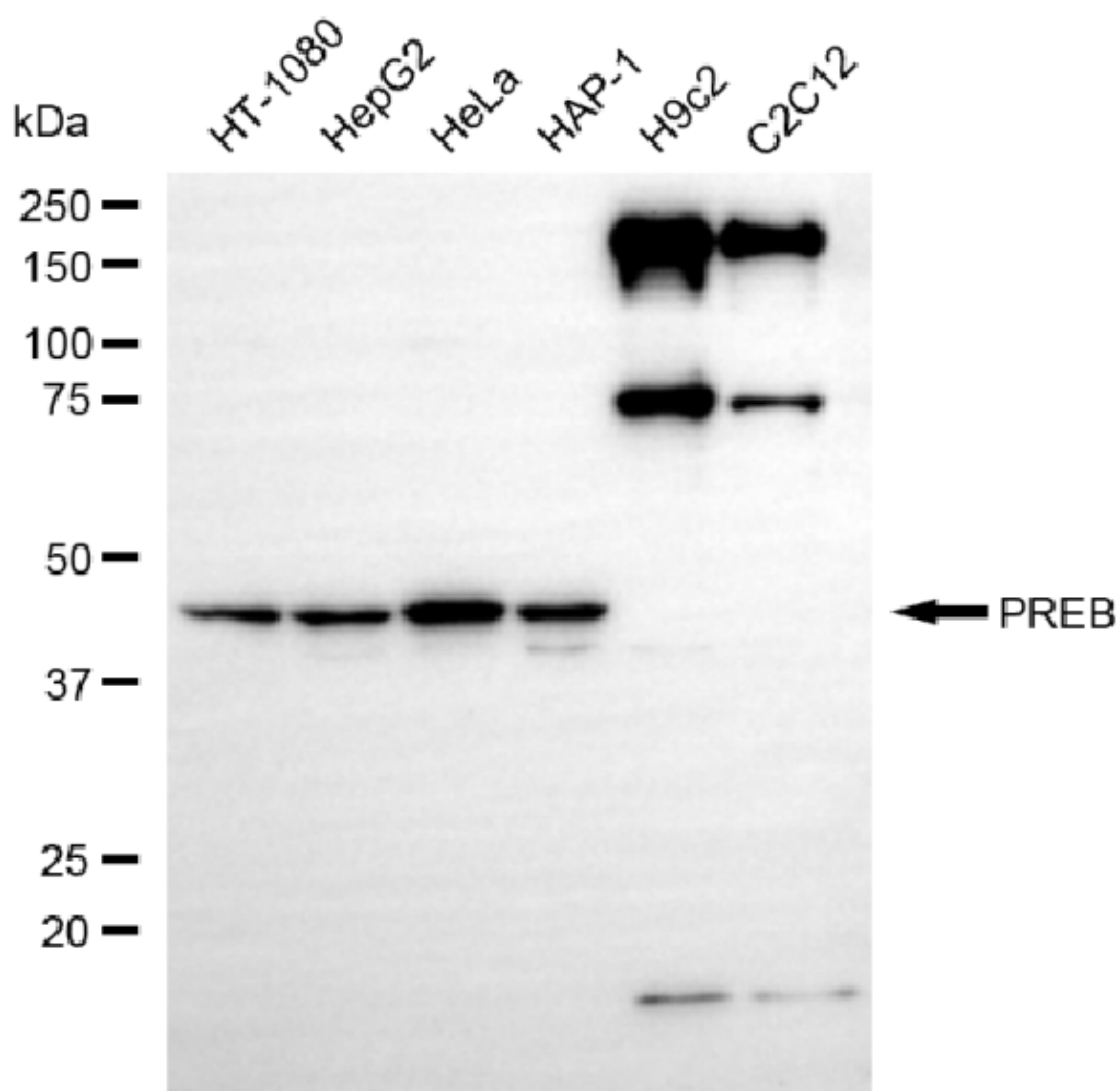
SALES@GENUINBIOTECH.COM
FAX: +1-540-855-7041

WWW.GENUINBIOTECH.COM



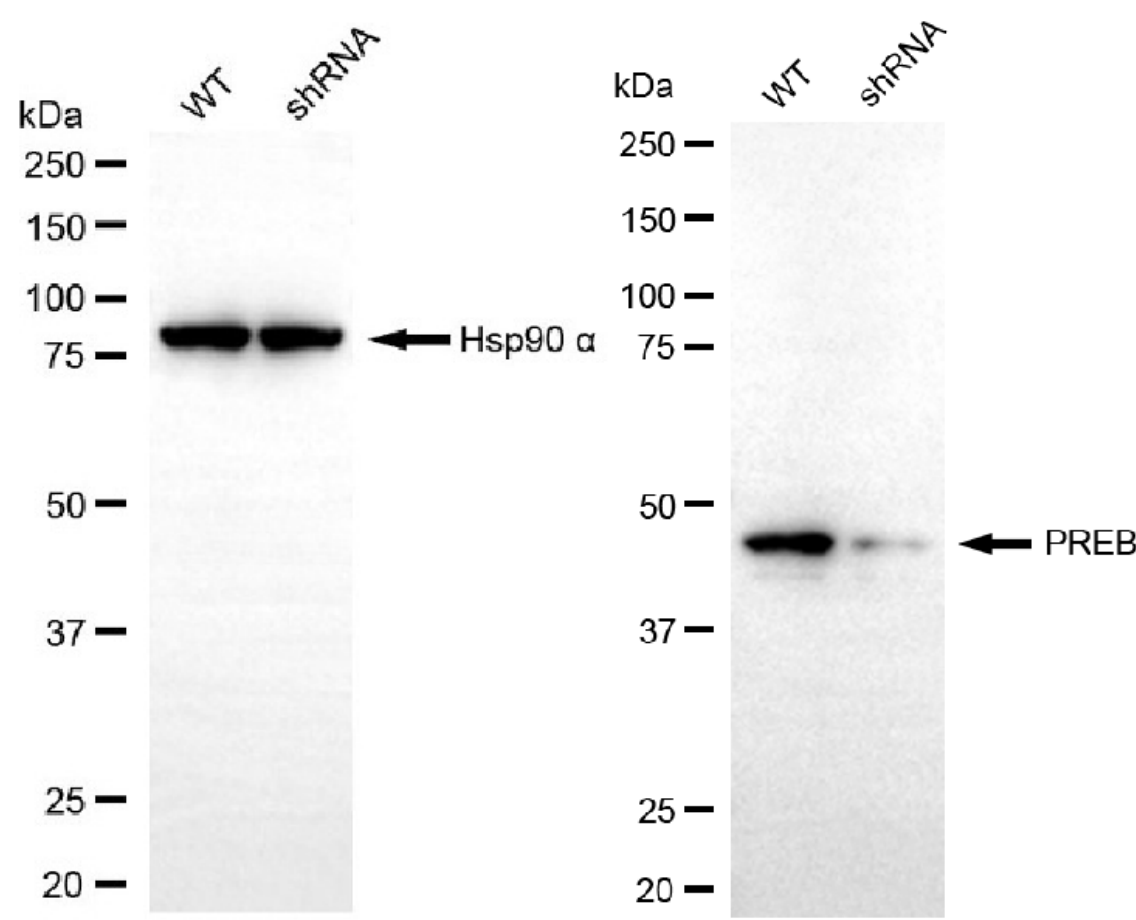
Copyright ©2025 Genuin Biotechnologies LLC

Flow cytometric analysis of PREB expression in HepG2 cells using anti-PREB antibody (Cat#65556, 1:2,000). Green, isotype control; red, PREB.



Copyright ©2025 Genuin Biotechnologies LLC

Western blotting analysis using anti-PREB antibody (Cat#65556). Total cell lysates (30 µg) from various cell lines were loaded and separated by SDS-PAGE. The blot was incubated with anti-PREB antibody (Cat#65556, 1:5,000) and HRP-conjugated goat anti-rabbit secondary antibody (Cat#201, 1:20,000) respectively. Image was developed using NaQ™ ECL Substrate Kit (Cat#716).



Copyright ©2025 Genuin Biotechnologies LLC

Western blotting analysis using anti-PREB antibody (Cat#65556). PREB expression in wild-type (WT) and PREB shRNA knockdown (KD) HeLa cells with 25 µg of total cell lysates. Hsp90 α serves as a loading control. The blot was incubated with anti-PREB antibody (Cat#65556, 1:5,000) and HRP-conjugated goat anti-rabbit secondary antibody (Cat#201, 1:20,000) respectively. Image was developed using FeQ™ ECL Substrate Kit (Cat#226).

SUPPORT

SUPPORT@GENUINBIOTECH.COM
TEL: +1-540-855-7041

ORDERS

SALES@GENUINBIOTECH.COM
FAX: +1-540-855-7041

WWW.GENUINBIOTECH.COM