

KD-Validated Anti-Cathepsin Z Rabbit Monoclonal Antibody



Catalog #: 65559

Aliases

CTSZ; Cathepsin Z; Cathepsin X; CTSX; Cysteine-Type Carboxypeptidase; Lysosomal Carboxypeptidase B; Carboxypeptidase LB; Cathepsin IV; Cathepsin B2; Cathepsin Z1; Cathepsin Y; Cathepsin P; EC 3.4.18.1; Preprocathepsin P

Background

Gene Name: CTSZ

NCBI Gene Entry: [1522](#)

UniProt Entry: [Q9UBR2](#)

Application Information

Molecular Weight: Predicted, 34 kDa; observed, 36 kDa

Clonality: Rabbit monoclonal antibody

Clone ID: 25GB4255

Species Reactivity: Human

Applications Tested: Western blotting (WB), flow cytometry (FCM)

Immunogen

Recombinant protein of human Cathepsin Z

Isotype

Rabbit IgG

Storage Buffer

Supplied in PBS (pH 7.4) containing 50% glycerol, and 0.02% sodium azide.

Storage

Store at -20 °C for one year.

Recommended Dilutions

Western Blotting (WB): 1:1,000-1:5,000

Flow Cytometry (FCM): 1:2,000

Note: This product is for research use only.

Validation Data

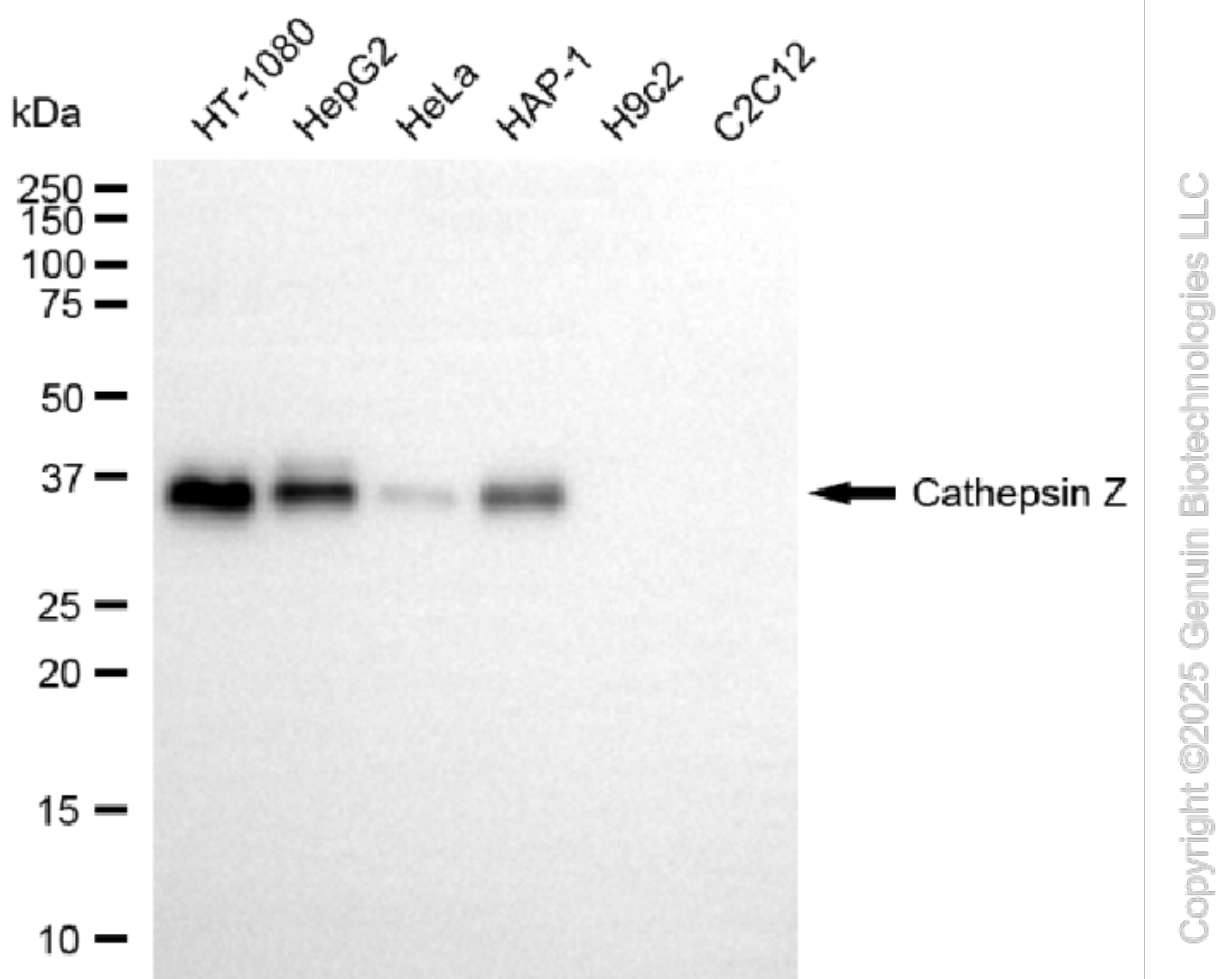
SUPPORT

SUPPORT@GENUINBIOTECH.COM
TEL: +1-540-855-7041

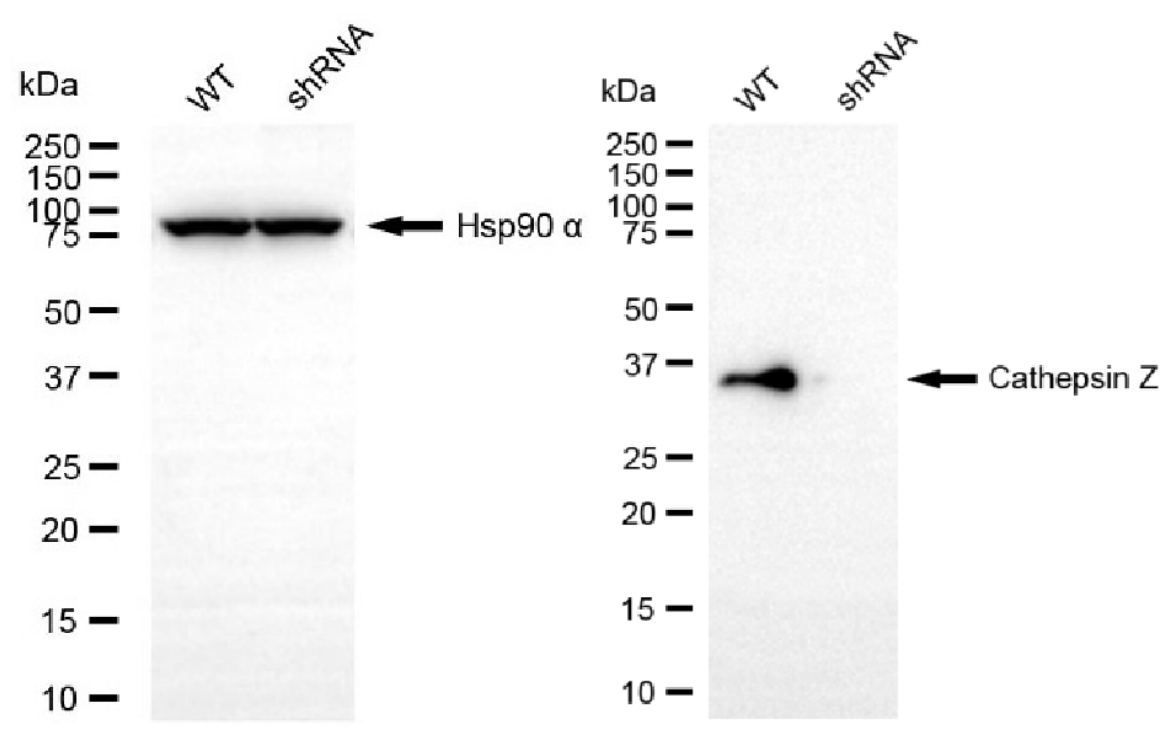
ORDERS

SALES@GENUINBIOTECH.COM
FAX: +1-540-855-7041

WWW.GENUINBIOTECH.COM

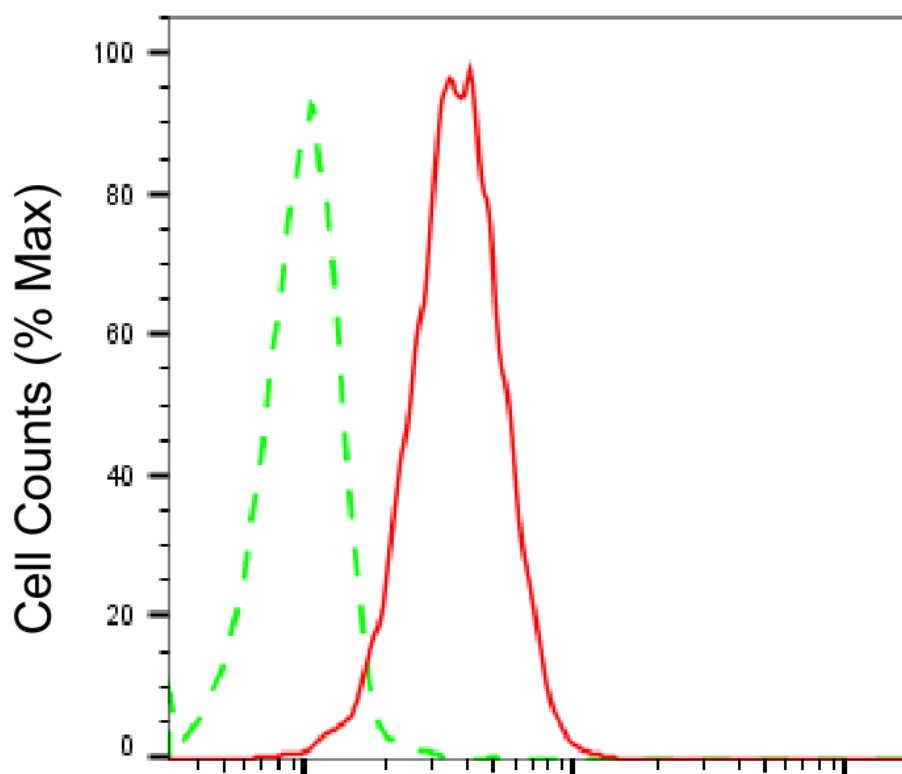


Western blotting analysis using anti-cathepsin Z antibody (Cat#65559). Total cell lysates (30 µg) from various cell lines were loaded and separated by SDS-PAGE. The blot was incubated with anti-cathepsin Z antibody (Cat#65559, 1:5,000) and HRP-conjugated goat anti-rabbit secondary antibody (Cat#201, 1:20,000) respectively. Image was developed using NaQ™ ECL Substrate Kit (Cat#716).



Copyright ©2025 Genuin Biotechnologies LLC

Western blotting analysis using anti-cathepsin Z antibody (Cat#65559). Cathepsin Z expression in wild-type (WT) and cathepsin Z (CTSZ) shRNA knockdown (KD) HeLa cells with 20 µg of total cell lysates. Hsp90 α serves as a loading control. The blot was incubated with anti-cathepsin Z antibody (Cat#65559, 1:5,000) and HRP-conjugated goat anti-rabbit secondary antibody (Cat#201, 1:20,000) respectively. Image was developed using NaQ™ ECL Substrate Kit (Cat#716).



Copyright ©2025 Genuin Biotechnologies LLC

Cathepsin Z-Alexa Fluor® 647

Flow cytometric analysis of Cathepsin Z expression in HT-1080 cells using anti-Cathepsin Z antibody (Cat#65559, 1:2,000). Green, isotype control; red, Cathepsin Z.