

KD-Validated Anti-Cullin 5 Rabbit Monoclonal Antibody



Catalog #: 65564

Aliases

CUL5; Cullin 5; VACM-1; Vasopressin-Activated Calcium-Mobilizing Receptor 1; Cullin-5; CUL-5; VACM1; Cullin-5 (Vasopressin-Activated Calcium-Mobilizing Receptor-1); Vasopressin-Activated Calcium-Mobilizing Receptor-1

Background

Gene Name: CUL5

NCBI Gene Entry: [8065](#)

UniProt Entry: [Q93034](#)

Application Information

Molecular Weight: Predicted, 91 kDa; observed, 75 kDa

Clonality: Rabbit monoclonal antibody

Clone ID: 25GB4280

Species Reactivity: Human, mouse, rat

Applications Tested: Western blotting (WB), immunocytochemistry (IC), flow cytometry (FCM)

Immunogen

Recombinant protein of human Cullin 5

Isotype

Rabbit IgG

Storage Buffer

Supplied in PBS (pH 7.4) containing 50% glycerol, and 0.02% sodium azide.

Storage

Store at -20 °C for one year.

Recommended Dilutions

Western Blotting (WB): 1:1,000-1:5,000

Immunocytochemistry (IC): 1:100-1:1,000

Flow Cytometry (FCM): 1:2,000

Note: This product is for research use only.

SUPPORT

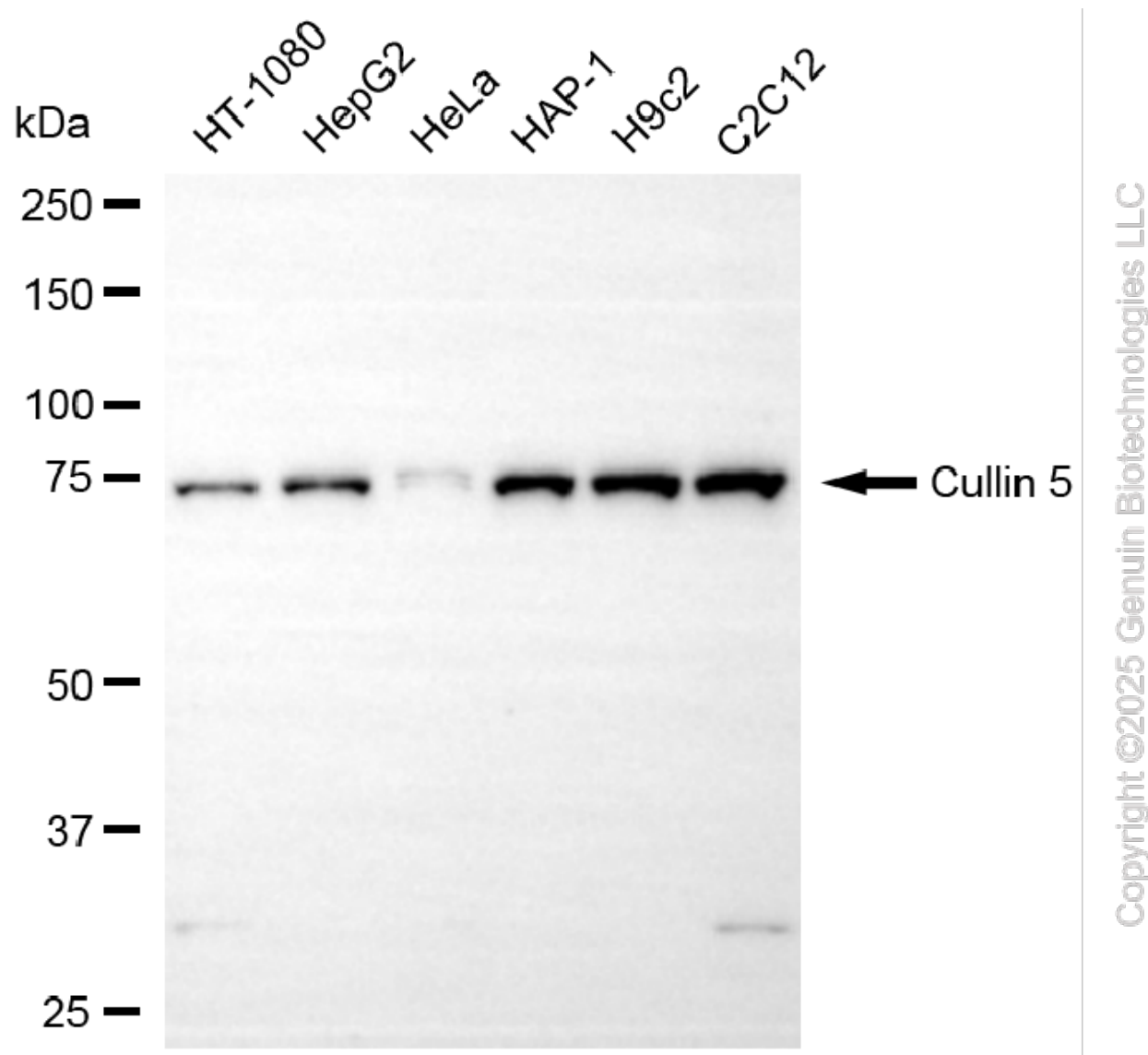
SUPPORT@GENUINBIOTECH.COM
TEL: +1-540-855-7041

ORDERS

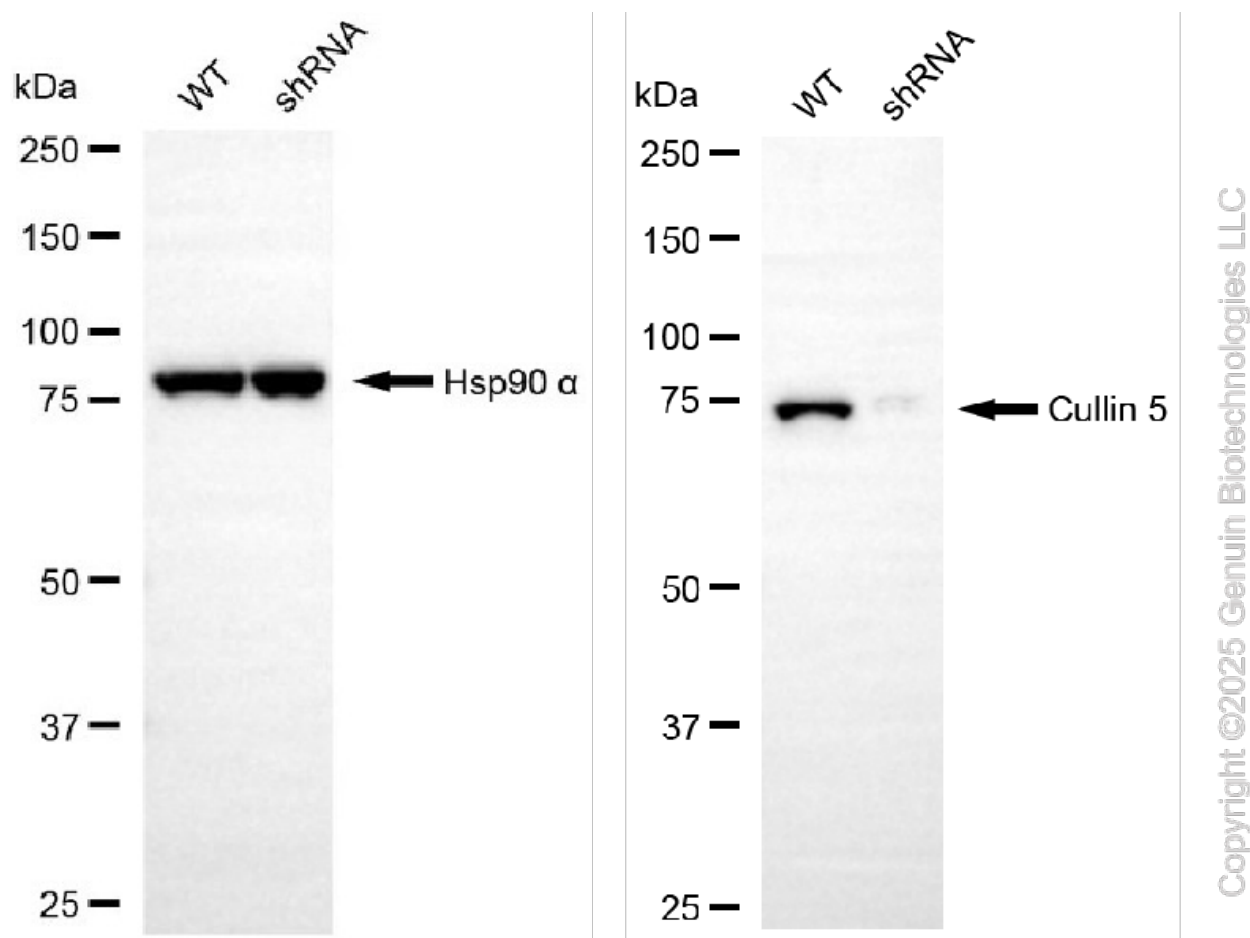
SALES@GENUINBIOTECH.COM
FAX: +1-540-855-7041

WWW.GENUINBIOTECH.COM

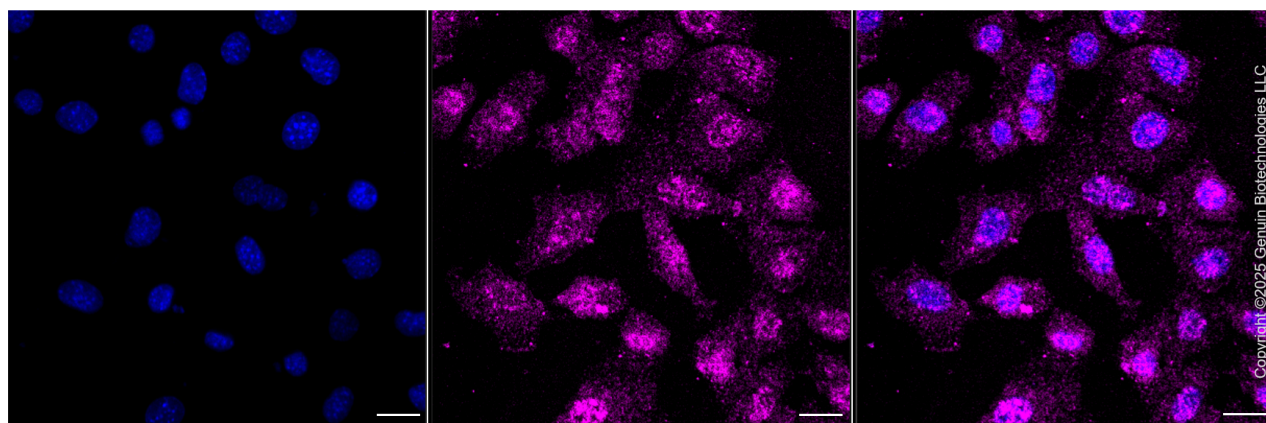
Validation Data



Western blotting analysis using anti-cullin 5 antibody (Cat#65564). Total cell lysates (30 µg) from various cell lines were loaded and separated by SDS-PAGE. The blot was incubated with anti-cullin 5 antibody (Cat#65564, 1:5,000) and HRP-conjugated goat anti-rabbit secondary antibody (Cat#201, 1:20,000) respectively. Image was developed using NaQ™ ECL Substrate Kit (Cat#716).



Western blotting analysis using anti-cullin 5 antibody (Cat#65564). Cullin 5 expression in wild-type (WT) and cullin 5 (CUL5) shRNA knockdown (KD) 293T cells with 20 µg of total cell lysates. Hsp90 α serves as a loading control. The blot was incubated with anti-cullin 5 antibody (Cat#65564, 1:5,000) and HRP-conjugated goat anti-rabbit secondary antibody (Cat#201, 1:20,000) respectively. Image was developed using NaQ™ ECL Substrate Kit (Cat#716).



Immunocytochemical staining of C2C12 cells with anti-Cullin 5 antibody (Cat#65564, 1:1,000). Nuclei were stained blue with DAPI; Cullin 5 was stained magenta with Alexa Fluor® 647. Images were taken using Leica stellaris 5. Protein abundance based on laser Intensity and smart

SUPPORT

SUPPORT@GENUINBIOTECH.COM
TEL: +1-540-855-7041

ORDERS

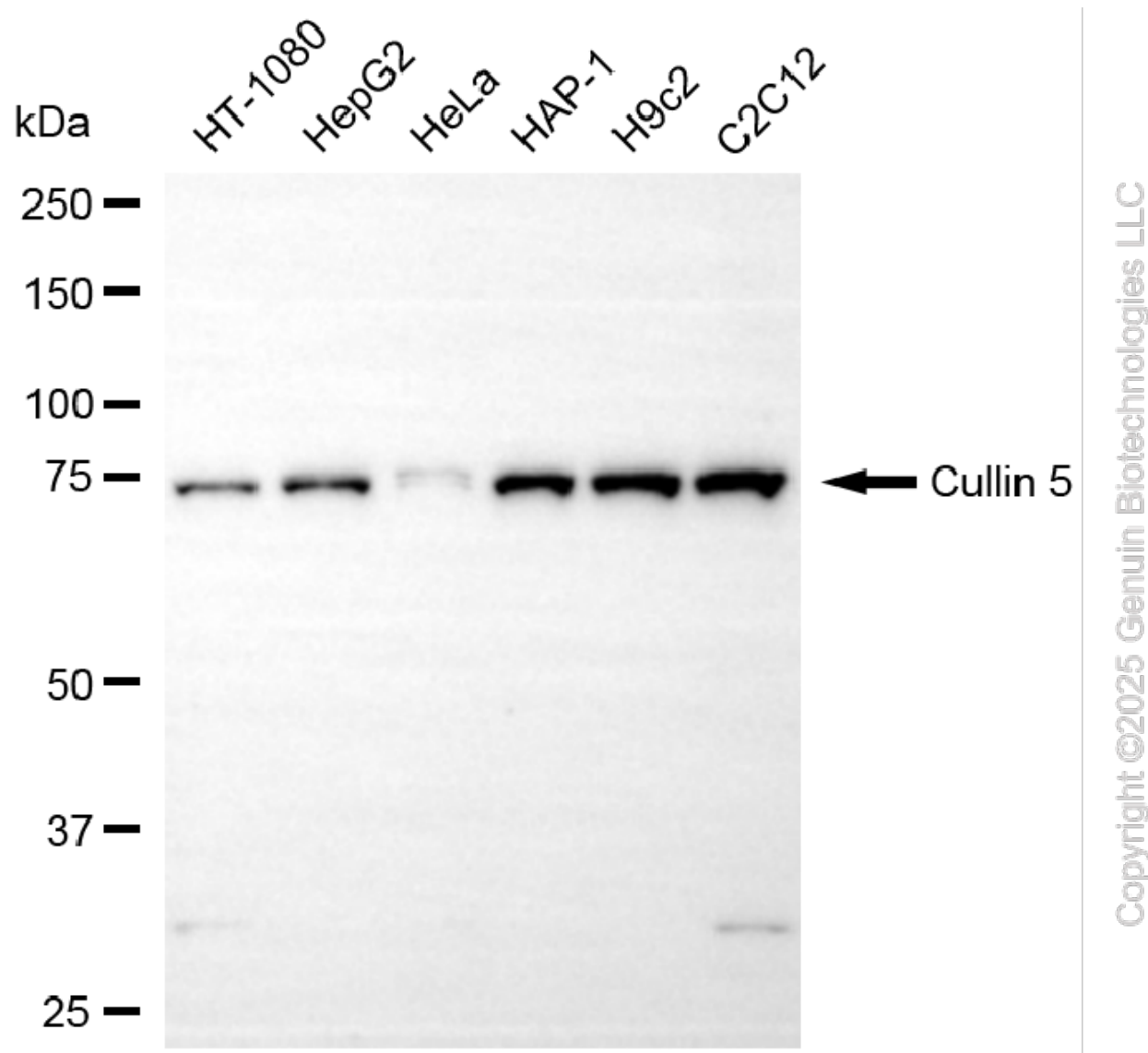
SALES@GENUINBIOTECH.COM
FAX: +1-540-855-7041

WWW.GENUINBIOTECH.COM

KD-Validated Anti-Cullin 5 Rabbit Monoclonal Antibody

PAGE 4

gain: Low. Scale bar, 20 μ m.



Western blotting analysis using anti-cullin 5 antibody (Cat#65564). Total cell lysates (30 μ g) from various cell lines were loaded and separated by SDS-PAGE. The blot was incubated with anti-cullin 5 antibody (Cat#65564, 1:5,000) and HRP-conjugated goat anti-rabbit secondary antibody (Cat#201, 1:20,000) respectively. Image was developed using NaQ™ ECL Substrate Kit (Cat#716).

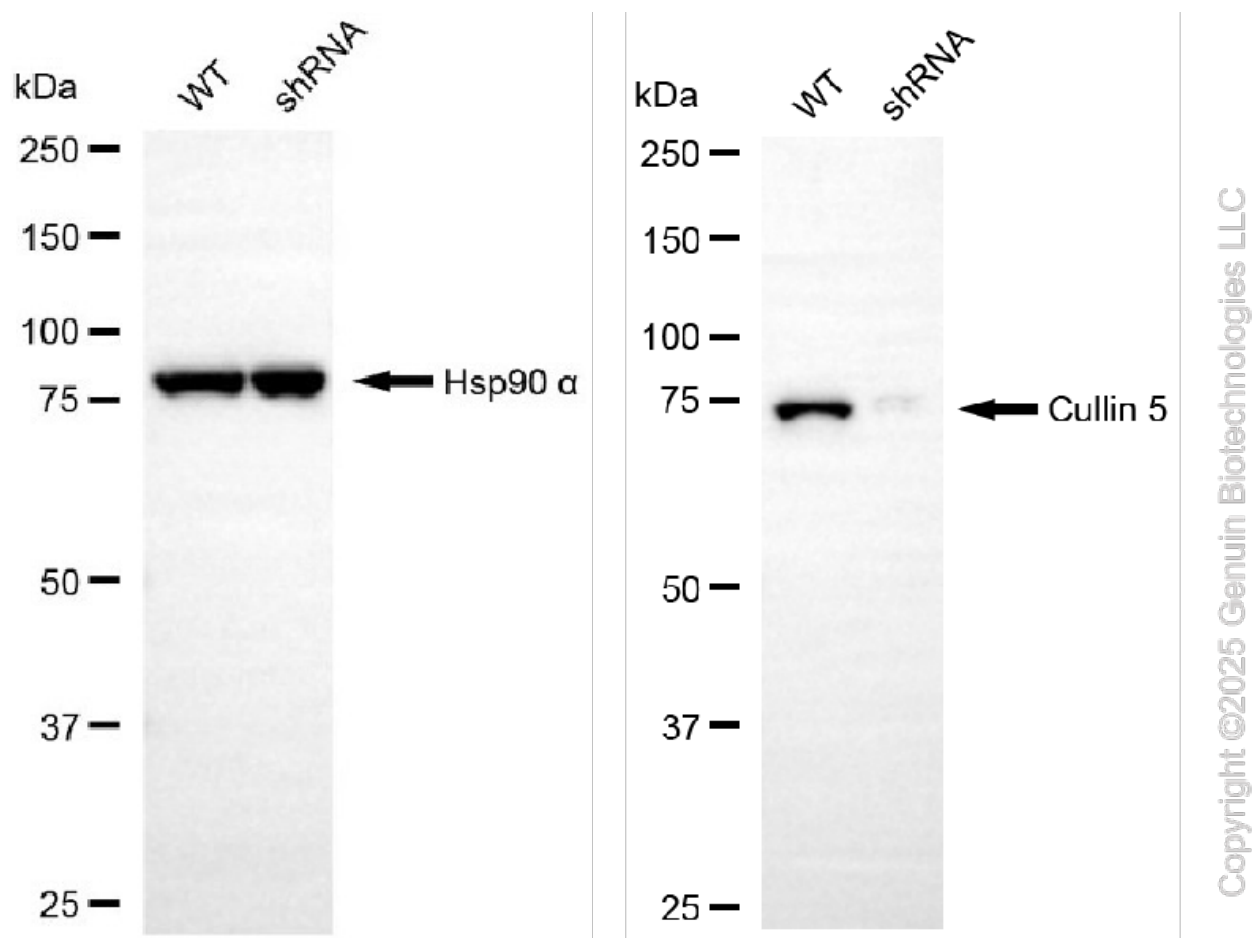
SUPPORT

SUPPORT@GENUINBIOTECH.COM
TEL: +1-540-855-7041

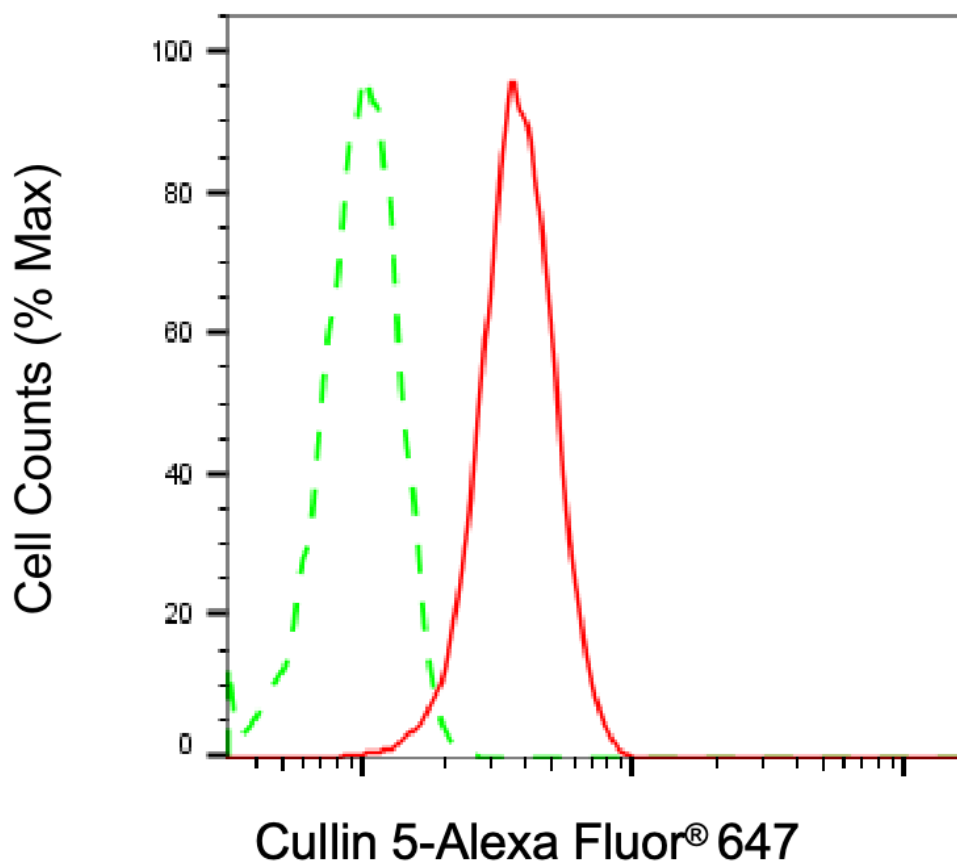
ORDERS

SALES@GENUINBIOTECH.COM
FAX: +1-540-855-7041

WWW.GENUINBIOTECH.COM



Western blotting analysis using anti-cullin 5 antibody (Cat#65564). Cullin 5 expression in wild-type (WT) and cullin 5 (CUL5) shRNA knockdown (KD) 293T cells with 20 µg of total cell lysates. Hsp90 α serves as a loading control. The blot was incubated with anti-cullin 5 antibody (Cat#65564, 1:5,000) and HRP-conjugated goat anti-rabbit secondary antibody (Cat#201, 1:20,000) respectively. Image was developed using NaQ™ ECL Substrate Kit (Cat#716).



Flow cytometric analysis of Cullin 5 expression in C2C12 cells using anti-Cullin 5 antibody (Cat#65564, 1:2,000). Green, isotype control; red, Cullin 5.