

# KD-Validated Anti-ECI1 Rabbit Monoclonal Antibody



**Catalog #: 65565**

## Aliases

ECI1; Enoyl-CoA Delta Isomerase 1; DCI; Dodecenoyl-Coenzyme A Delta Isomerase (3,2 Trans-Enoyl-Coenzyme A Isomerase); Enoyl-CoA Delta Isomerase 1, Mitochondrial; Delta(3),Delta(2)-Enoyl-CoA Isomerase; D3,D2-Enoyl-CoA Isomerase; Dodecenoyl-CoA Isomerase; Dodecenoyl-CoA Delta Isomerase (3,2 Trans-Enoyl-CoA Isomerase); 3,2-Trans-Enoyl-CoA Isomerase, Mitochondrial; Epididymis Secretory Sperm Binding Protein; 3,2 Trans-Enoyl-Coenzyme A Isomerase; 3,2 Trans-Enoyl-CoA Isomerase; 3,2-Trans-Enoyl-CoA Isomerase; Acetylene-Allene Isomerase; EC 5.3.3.8

## Background

Gene Name: ECI1

NCBI Gene Entry: [1632](#)

UniProt Entry: [P42126](#)

## Application Information

Molecular Weight: Predicted, 33 kDa; observed, 28 kDa

Clonality: Rabbit monoclonal antibody

Clone ID: 25GB4285

Species Reactivity: Human, mouse, rat

Applications Tested: Western blotting (WB), flow cytometry (FCM)

## Immunogen

A synthesized peptide derived from human ECI1

## Isotype

Rabbit IgG

## Storage Buffer

Supplied in PBS (pH 7.4) containing 50% glycerol, and 0.02% sodium azide.

## Storage

Store at -20 °C for one year.

## Recommended Dilutions

Western Blotting (WB): 1:1,000-1:5,000

Flow Cytometry (FCM): 1:2,000

---

### SUPPORT

SUPPORT@GENUINBIOTECH.COM  
TEL: +1-540-855-7041

### ORDERS

SALES@GENUINBIOTECH.COM  
FAX: +1-540-855-7041

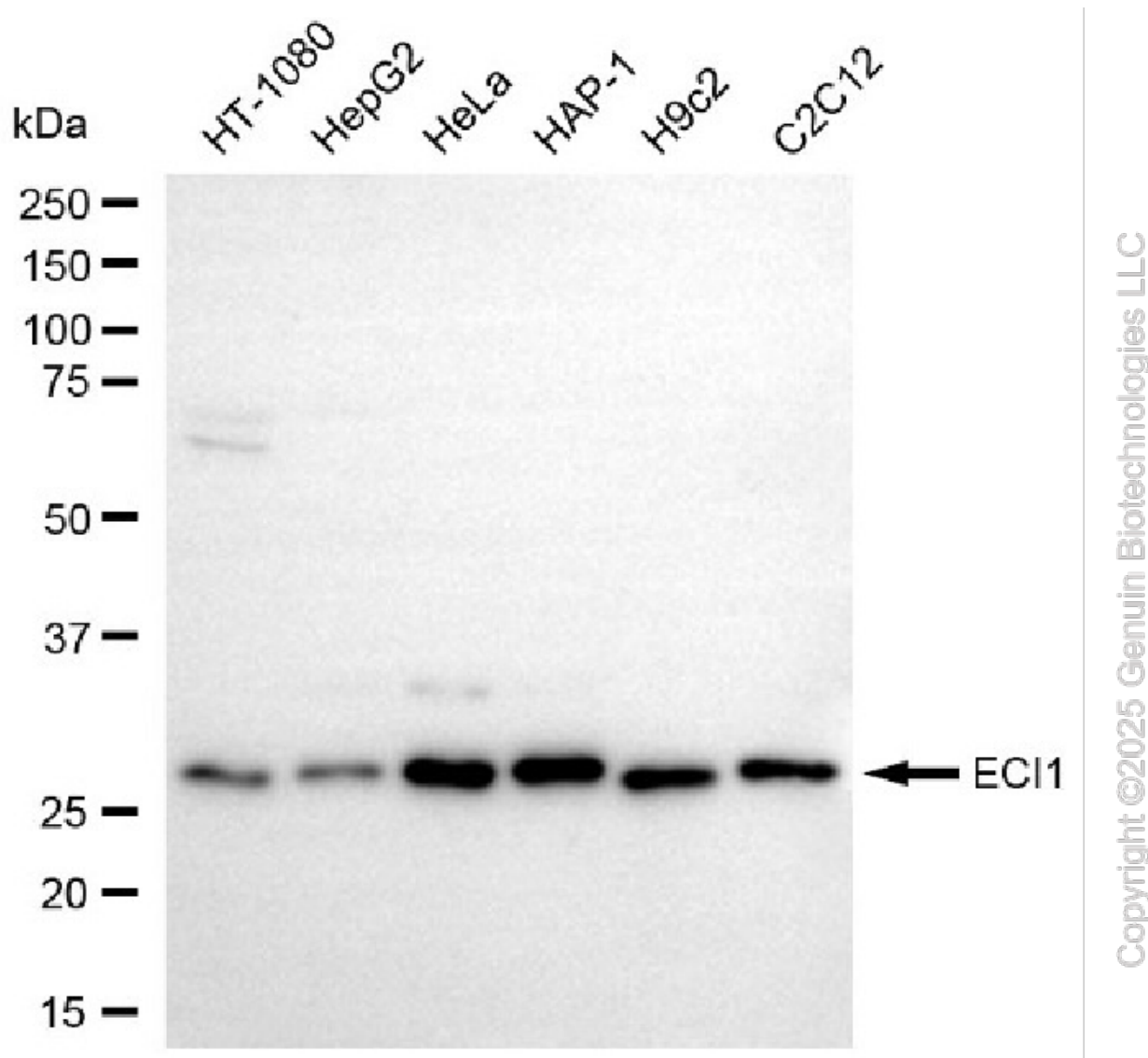
[WWW.GENUINBIOTECH.COM](http://WWW.GENUINBIOTECH.COM)

## KD-Validated Anti-ECI1 Rabbit Monoclonal Antibody

PAGE 2

**Note:** This product is for research use only.

### Validation Data



Western blotting analysis using anti-ECI1 antibody (Cat#65565). Total cell lysates (30 µg) from various cell lines were loaded and separated by SDS-PAGE. The blot was incubated with anti-ECI1 antibody (Cat#65565, 1:5,000) and HRP-conjugated goat anti-rabbit secondary antibody (Cat#201, 1:20,000) respectively. Image was developed using NaQ™ ECL Substrate Kit (Cat#716).

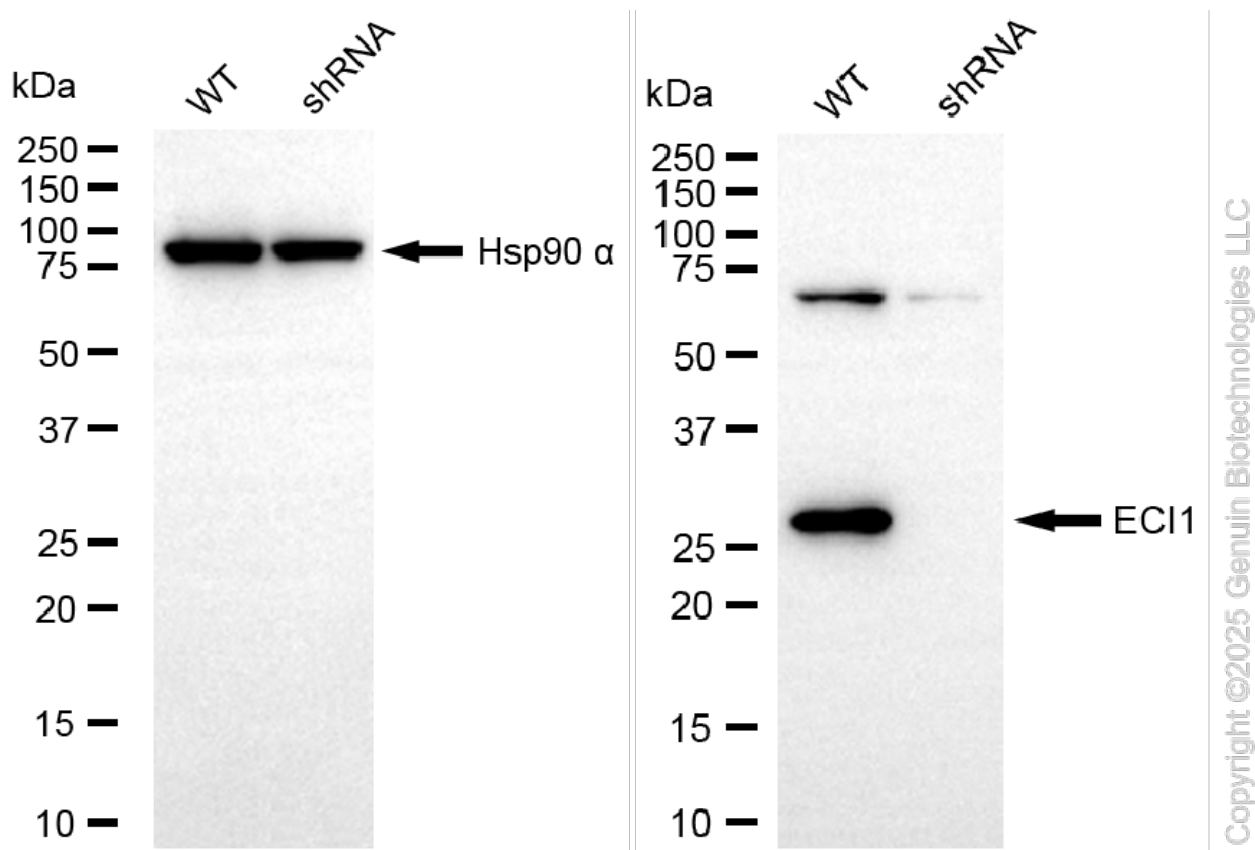
#### SUPPORT

SUPPORT@GENUINBIOTECH.COM  
TEL: +1-540-855-7041

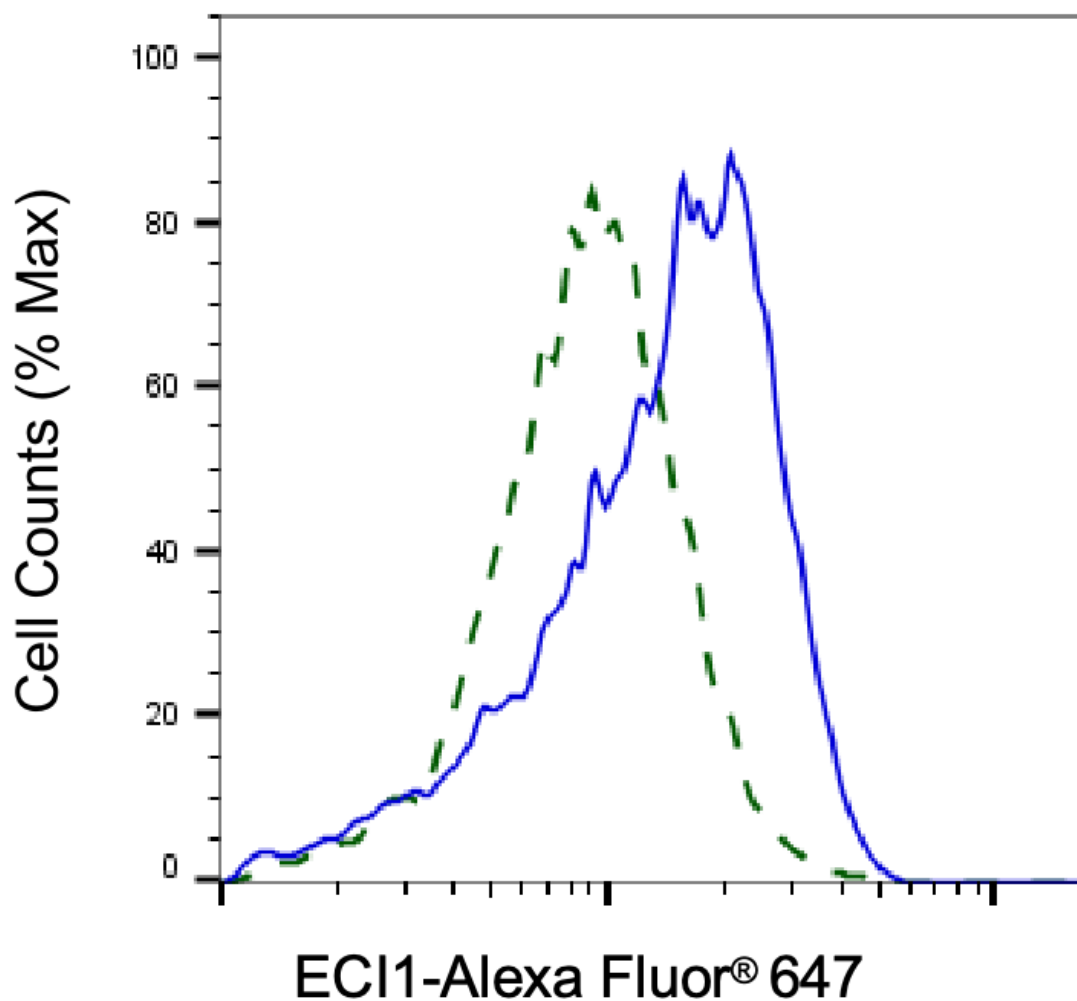
#### ORDERS

SALES@GENUINBIOTECH.COM  
FAX: +1-540-855-7041

[WWW.GENUINBIOTECH.COM](http://WWW.GENUINBIOTECH.COM)



Western blotting analysis using anti-ECI1 antibody (Cat#65565). ECI1 expression in wild-type (WT) and ECI1 shRNA knockdown (KD) HeLa cells with 20 µg of total cell lysates. Hsp90 α serves as a loading control. The blot was incubated with anti-ECI1 antibody (Cat#65565, 1:5,000) and HRP-conjugated goat anti-rabbit secondary antibody (Cat#201, 1:20,000) respectively. Image was developed using NaQ™ ECL Substrate Kit (Cat#716).



Validation of ECI1 knockdown using flow cytometry. Wild-type(WT, Blue) and knockdown(KD, Green) HeLa cells were stained with anti-ECI1 antibody (Cat#65565, 1:2,000) and analyzed using BD flow cytometer.