

# KD-Validated Anti-GSDME Rabbit Monoclonal Antibody



**Catalog #: 65566**

## Aliases

GSDME; Gasdermin E; ICERE-1; DFNA5; Inversely Correlated With Estrogen Receptor Expression 1; DFNA5, Deafness Associated Tumor Suppressor; Non-Syndromic Hearing Impairment Protein 5; Gasdermin-E; Inversely Correlated With Estrogen Receptor Expression; Nonsyndromic Hearing Impairment Protein; Deafness, Autosomal Dominant 5; ICERE1

## Background

Gene Name: GSDME

NCBI Gene Entry: [1687](#)

UniProt Entry: [O60443](#)

## Application Information

Molecular Weight: Predicted, 55 kDa; observed, 55 kDa

Clonality: Rabbit monoclonal antibody

Clone ID: 25GB4290

Species Reactivity: Human, mouse

Applications Tested: Western blotting (WB), flow cytometry (FCM)

## Immunogen

Recombinant protein of human GSDME

## Isotype

Rabbit IgG

## Storage Buffer

Supplied in PBS (pH 7.4) containing 50% glycerol, and 0.02% sodium azide.

## Storage

Store at -20 °C for one year.

## Recommended Dilutions

Western Blotting (WB): 1:1,000-1:5,000

Flow Cytometry (FCM): 1:200-1:2,000

**Note:** This product is for research use only.

---

### SUPPORT

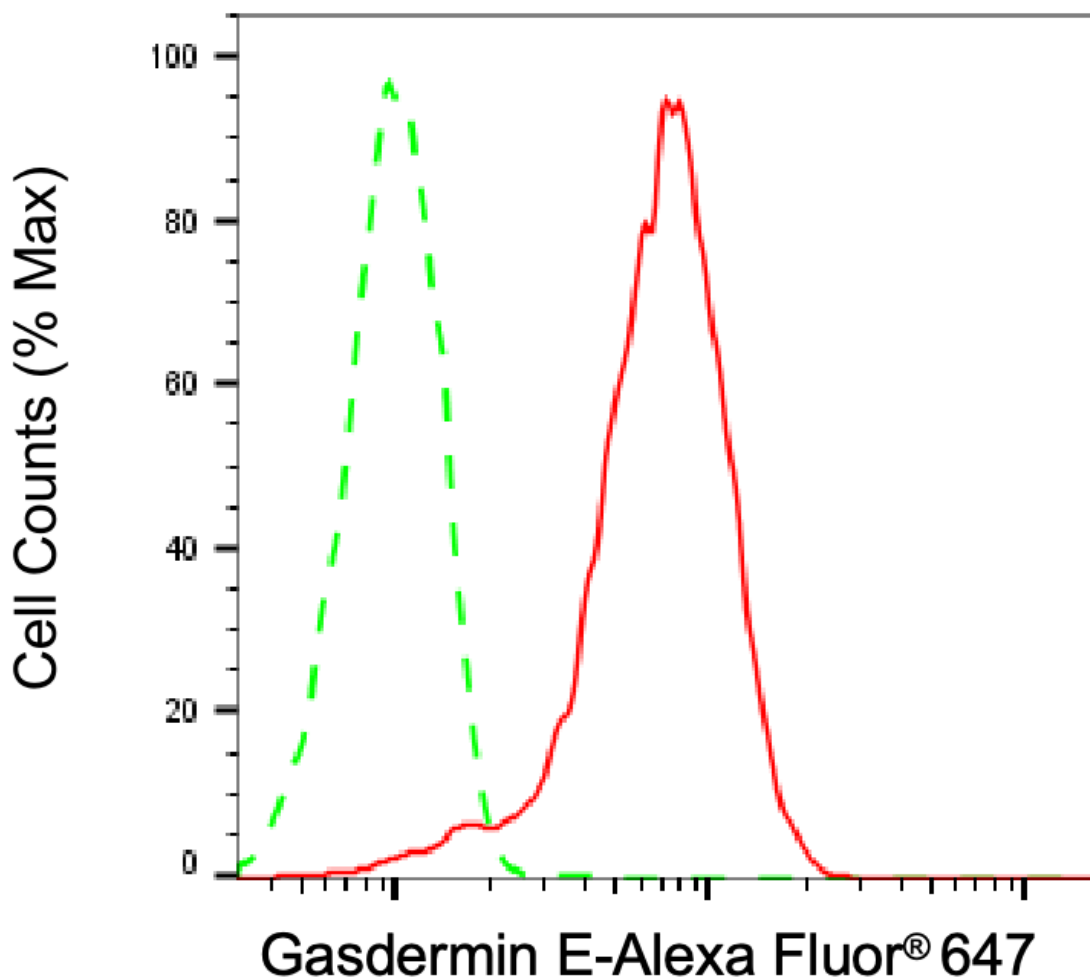
SUPPORT@GENUINBIOTECH.COM  
TEL: +1-540-855-7041

### ORDERS

SALES@GENUINBIOTECH.COM  
FAX: +1-540-855-7041

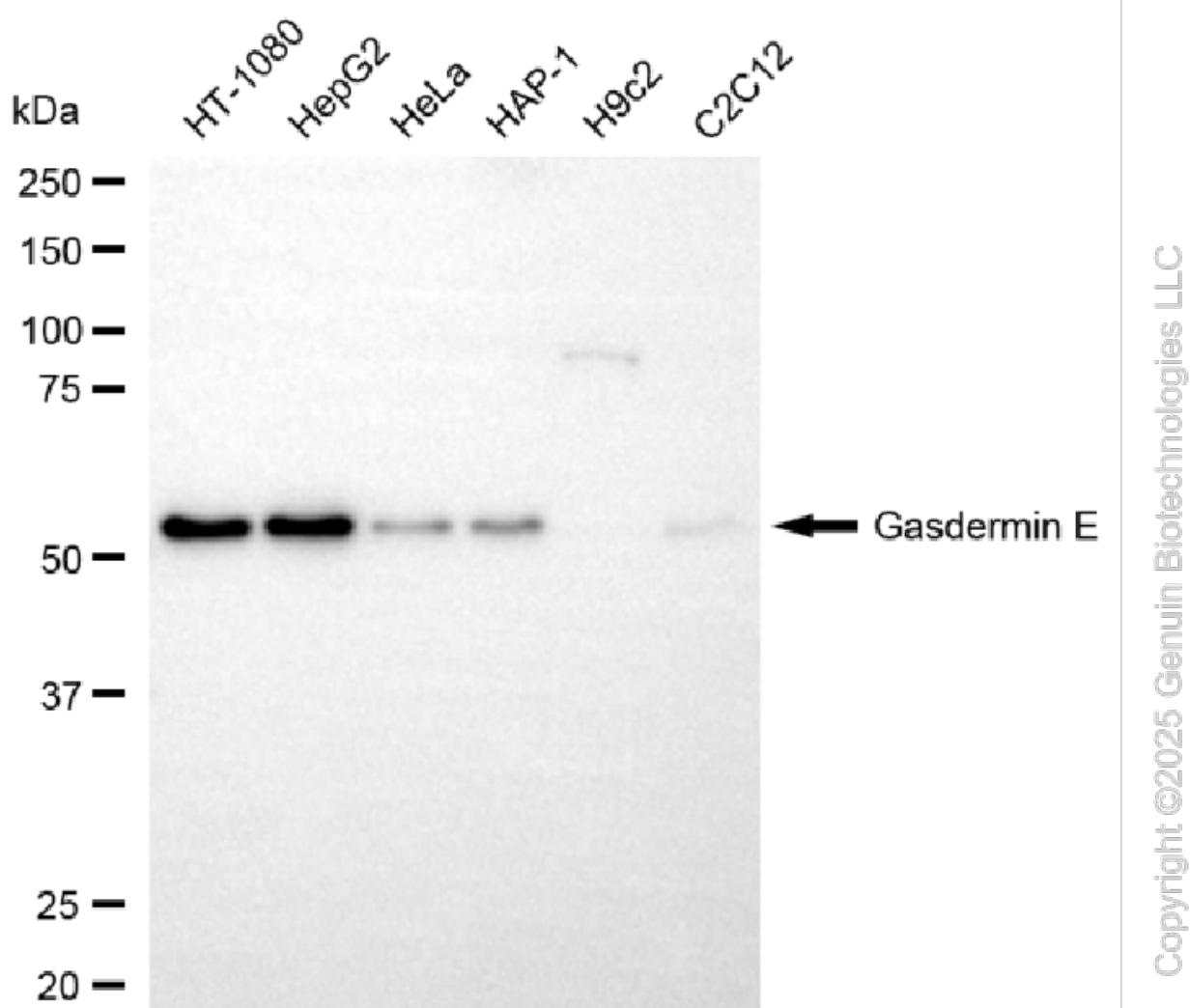
[WWW.GENUINBIOTECH.COM](http://WWW.GENUINBIOTECH.COM)

**Validation Data**

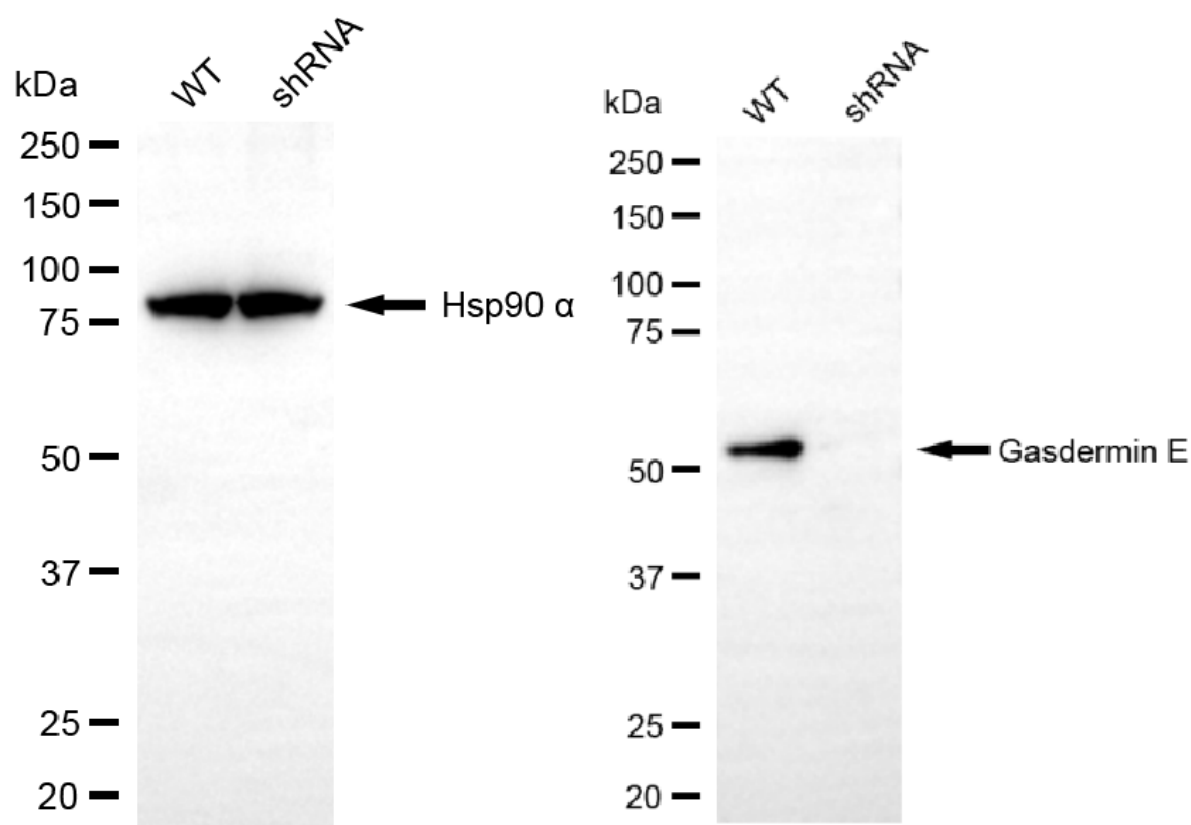


Copyright ©2025 Genuin Biotechnologies LLC

Flow cytometric analysis of Gasdermin E expression in HepG2 cells using anti-Gasdermin E antibody (Cat#65566, 1:2,000). Green, isotype control; red, Gasdermin E.



Western blotting analysis using anti-gasdermin E antibody (Cat#65566). Total cell lysates (30 µg) from various cell lines were loaded and separated by SDS-PAGE. The blot was incubated with anti-gasdermin E antibody (Cat#65566, 1:5,000) and HRP-conjugated goat anti-rabbit secondary antibody (Cat#201, 1:20,000) respectively. Image was developed using NaQ™ ECL Substrate Kit (Cat#716).



Copyright ©2025 Genuin Biotechnologies LLC

Western blotting analysis using anti-gasdermin E antibody (Cat#65566). Gasdermin E expression in wild-type (WT) and gasdermin E (GSDME) shRNA knockdown (KD) HeLa cells with 20 µg of total cell lysates. Hsp90 α serves as a loading control. The blot was incubated with anti-gasdermin E antibody (Cat#65566, 1:5,000) and HRP-conjugated goat anti-rabbit secondary antibody (Cat#201, 1:20,000) respectively. Image was developed using NaQ™ ECL Substrate Kit (Cat#716).