

KD-Validated Anti-KRIT1 Rabbit Monoclonal Antibody



Catalog #: 65578

Aliases

KRIT1; KRIT1 Ankyrin Repeat Containing; Krev Interaction Trapped 1; CCM1; CAM; Cerebral Cavernous Malformations 1 Protein; Krev Interaction Trapped Protein 1; Ankyrin Repeat-Containing Protein Krit1; Cerebral Cavernous Malformations 1; KRIT1, Ankyrin Repeat Containing

Background

Gene Name: KRIT1

NCBI Gene Entry: [889](#)

UniProt Entry: [O00522](#)

Application Information

Molecular Weight: Predicted, 84 kDa; observed, 68-73 kDa

Clonality: Rabbit monoclonal antibody

Clone ID: 25GB4350

Species Reactivity: Human, mouse, rat

Applications Tested: Western blotting (WB), flow cytometry (FCM), immunocytochemistry (IC)

Immunogen

Recombinant protein of human KRIT1

Isotype

Rabbit IgG

Storage Buffer

Supplied in PBS (pH 7.4) containing 50% glycerol, and 0.02% sodium azide.

Storage

Store at -20 °C for one year.

Recommended Dilutions

Western Blotting (WB): 1:1,000-1:5,000

Flow Cytometry (FCM): 1:2,000

Immunocytochemistry (IC): 1:100-1:1,000

SUPPORT

SUPPORT@GENUINBIOTECH.COM
TEL: +1-540-855-7041

ORDERS

SALES@GENUINBIOTECH.COM
FAX: +1-540-855-7041

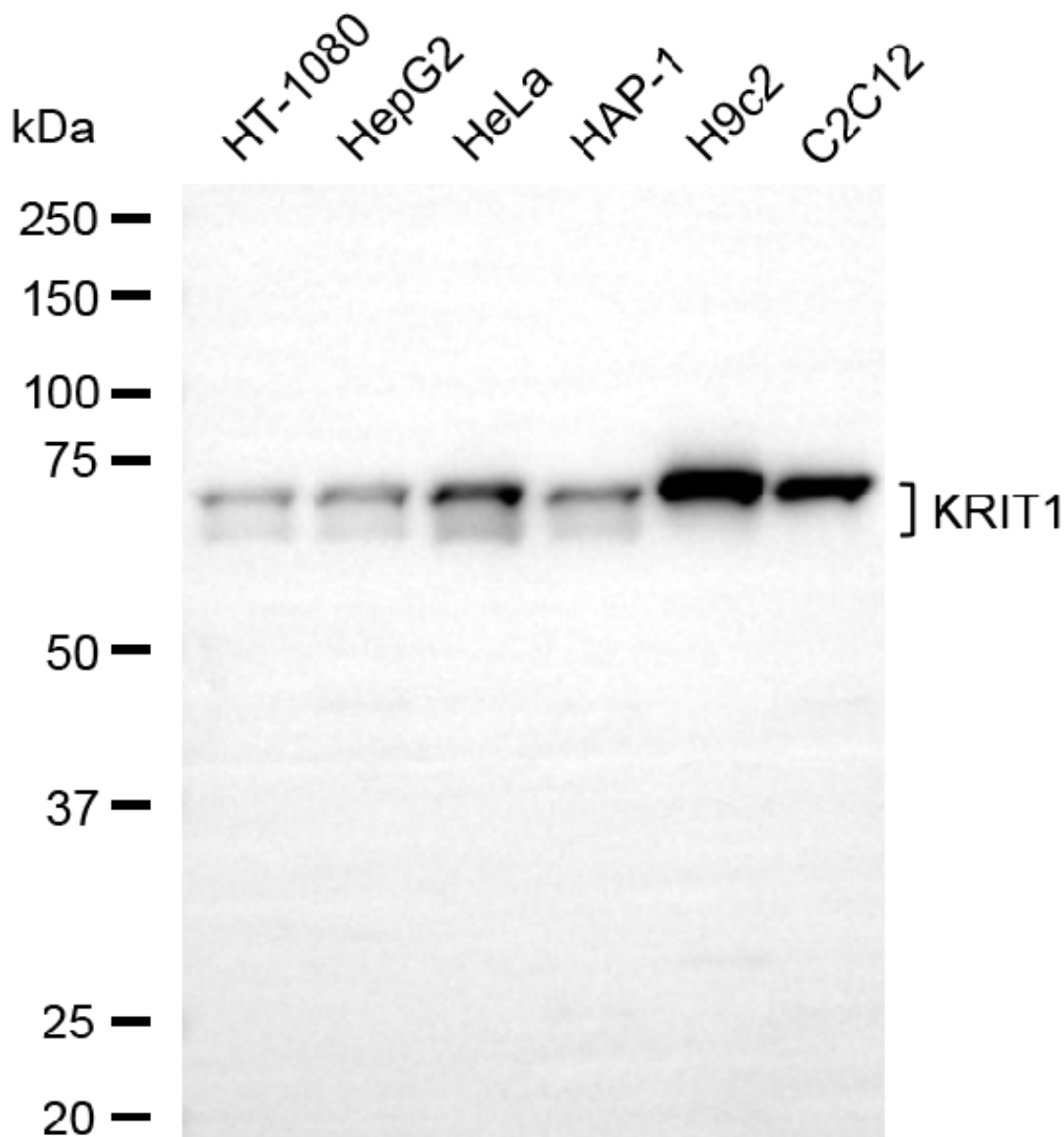
WWW.GENUINBIOTECH.COM

KD-Validated Anti-KRIT1 Rabbit Monoclonal Antibody

PAGE 2

Note: This product is for research use only.

Validation Data



Copyright ©2025 Genuin Biotechnologies LLC

Western blotting analysis using anti-KRIT1 antibody (Cat#65578). Total cell lysates (20 µg) from various cell lines were loaded and separated by SDS-PAGE. The blot was incubated with anti-KRIT1 antibody (Cat#65578, 1:5,000) and HRP-conjugated goat anti-rabbit secondary antibody (Cat#201, 1:20,000) respectively. Image was developed using FeQ™ ECL Substrate Kit (Cat#226).

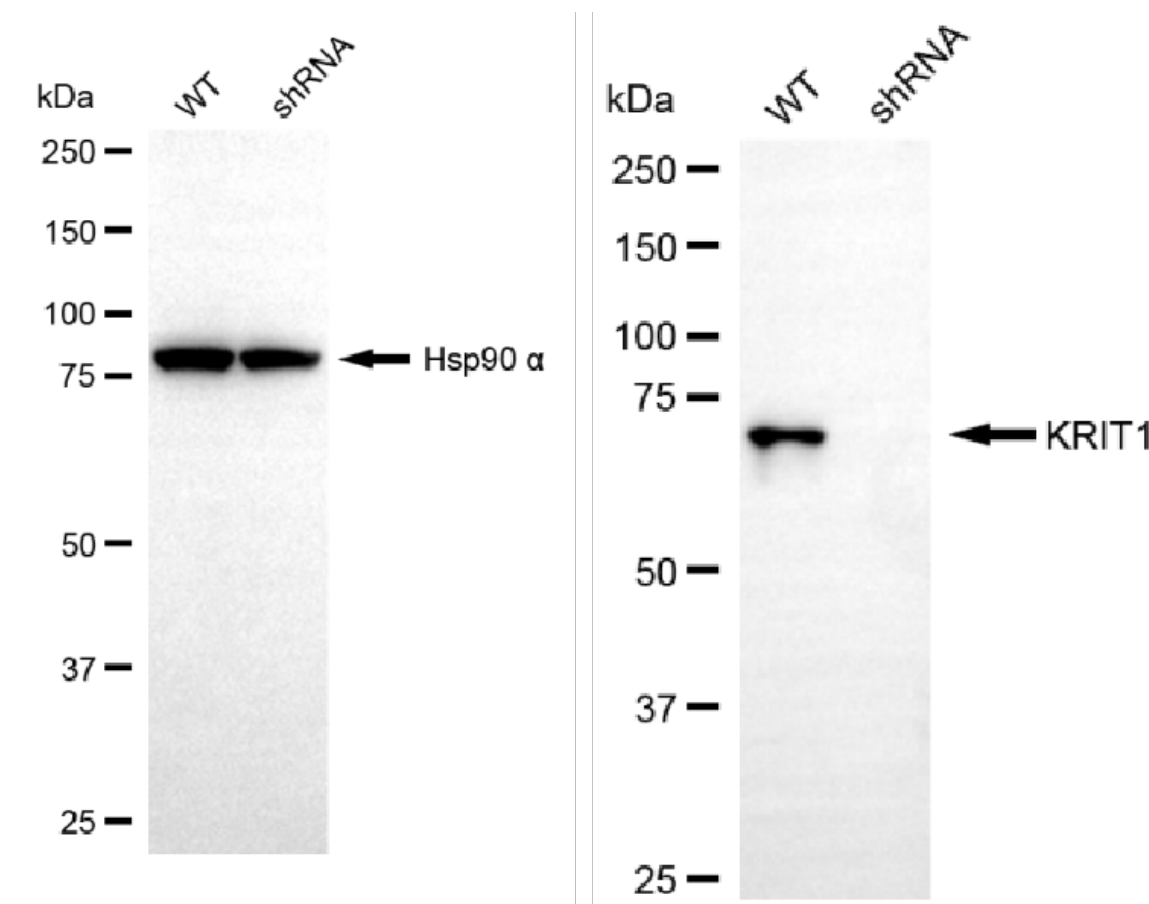
SUPPORT

SUPPORT@GENUINBIOTECH.COM
TEL: +1-540-855-7041

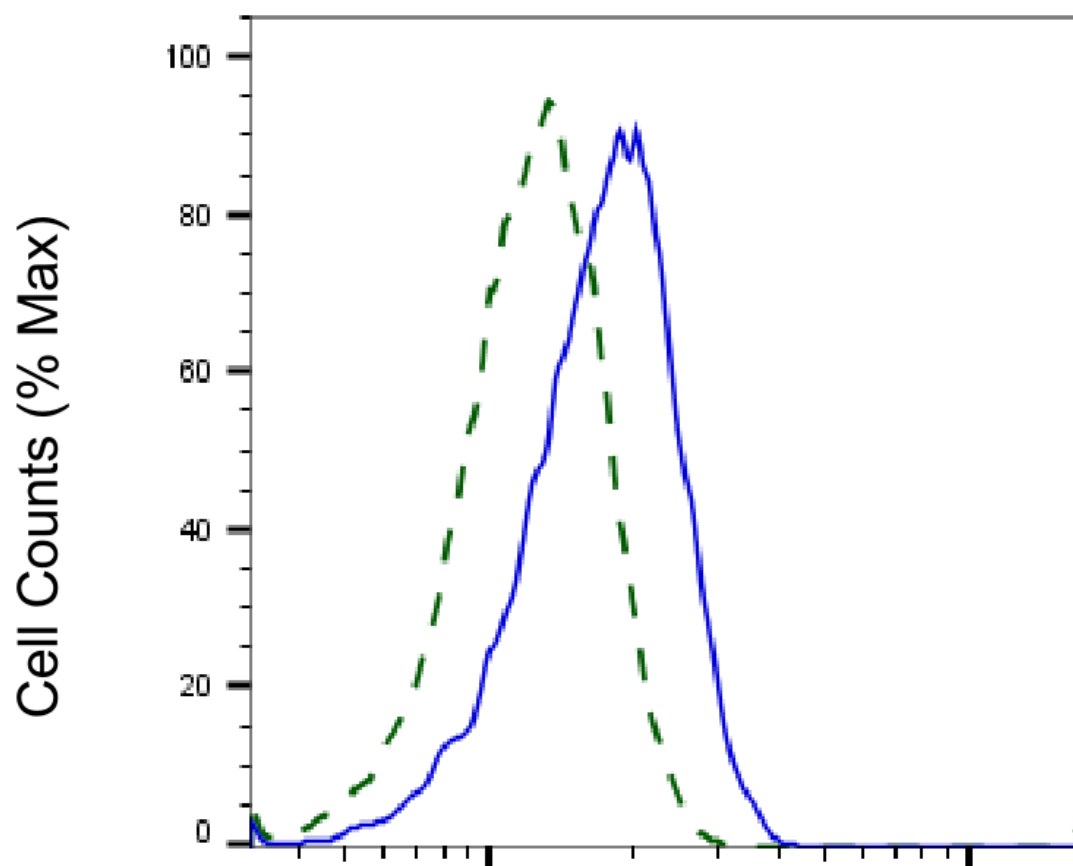
ORDERS

SALES@GENUINBIOTECH.COM
FAX: +1-540-855-7041

WWW.GENUINBIOTECH.COM



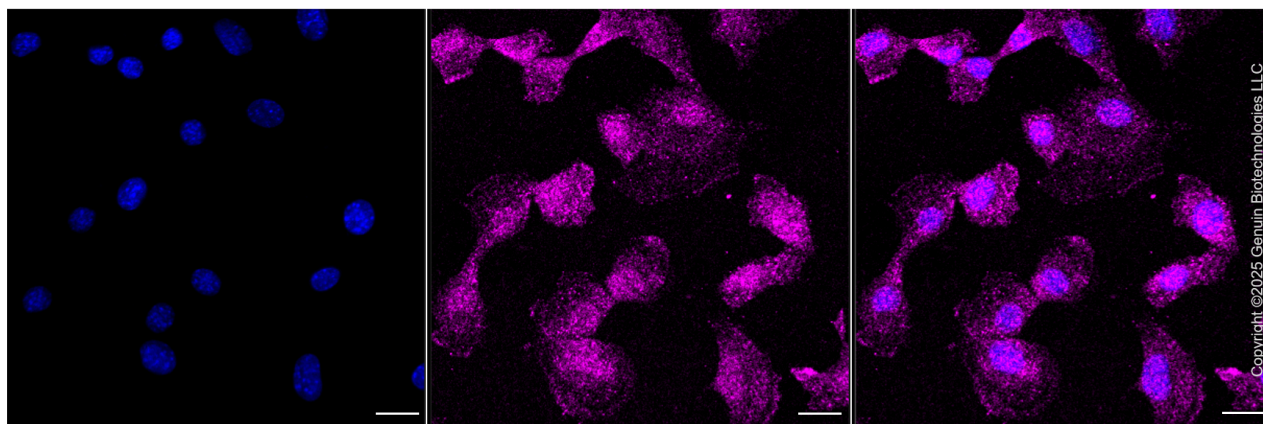
Western blotting analysis using anti-KRIT1 antibody (Cat#65578). KRIT1 expression in wild-type (WT) and KRIT1 shRNA knockdown (KD) HeLa cells with 20 μ g of total cell lysates. Hsp90 α serves as a loading control. The blot was incubated with anti-KRIT1 antibody (Cat#65578, 1:5,000) and HRP-conjugated goat anti-rabbit secondary antibody (Cat#201, 1:20,000) respectively. Image was developed using NaQ™ ECL Substrate Kit (Cat#716).



Copyright ©2025 Genuin Biotechnologies LLC

KRIT1-Alexa Fluor® 647

Validation of KRIT1 knockdown using flow cytometry. Wild-type(WT, Blue) and knockdown(KD, Green) HeLa cells were stained with anti-KRIT1 antibody (Cat#65578, 1:2,000) and analyzed using BD flow cytometer.



Copyright ©2025 Genuin Biotechnologies LLC

Immunocytochemical staining of C2C12 cells with anti-KRIT1 antibody (Cat#65578, 1:1,000) . Nuclei were stained blue with DAPI; KRIT1 was stained magenta with Alexa Fluor® 647. Images

SUPPORT

SUPPORT@GENUINBIOTECH.COM
TEL: +1-540-855-7041

ORDERS

SALES@GENUINBIOTECH.COM
FAX: +1-540-855-7041

WWW.GENUINBIOTECH.COM

KD-Validated Anti-KRIT1 Rabbit Monoclonal Antibody

PAGE 5

were taken using Leica stellaris 5. Protein abundance based on laser Intensity and smart gain: Low. Scale bar, 20 μ m.

SUPPORT

SUPPORT@GENUINBIOTECH.COM
TEL: +1-540-855-7041

ORDERS

SALES@GENUINBIOTECH.COM
FAX: +1-540-855-7041

WWW.GENUINBIOTECH.COM