

KD-Validated Anti-Lactate Dehydrogenase C Rabbit Monoclonal Antibody



Catalog #: 65579

Aliases

LDHC; Lactate Dehydrogenase C; CT32; Cancer/Testis Antigen 32; L-Lactate Dehydrogenase C Chain; LDH Testis Subunit; EC 1.1.1.27; LDH-C; LDH-X; LDH3; LDHX; Testis Secretory Sperm-Binding Protein Li 234P; Lactate Dehydrogenase C4; EC 1.1.1

Background

Gene Name: LDHC

NCBI Gene Entry: [3948](#)

UniProt Entry: [P07864](#)

Application Information

Molecular Weight: Predicted, 36 kDa; observed, 31 kDa

Clonality: Rabbit monoclonal antibody

Clone ID: 25GB4355

Species Reactivity: Human

Applications Tested: Western blotting (WB)

Immunogen

A synthesized peptide derived from human Lactate Dehydrogenase C

Isotype

Rabbit IgG

Storage Buffer

Supplied in PBS (pH 7.4) containing 50% glycerol, and 0.02% sodium azide.

Storage

Store at -20 °C for one year.

Recommended Dilutions

Western Blotting (WB): 1:1,000-1:5,000

Note: This product is for research use only.

Validation Data

SUPPORT

SUPPORT@GENUINBIOTECH.COM
TEL: +1-540-855-7041

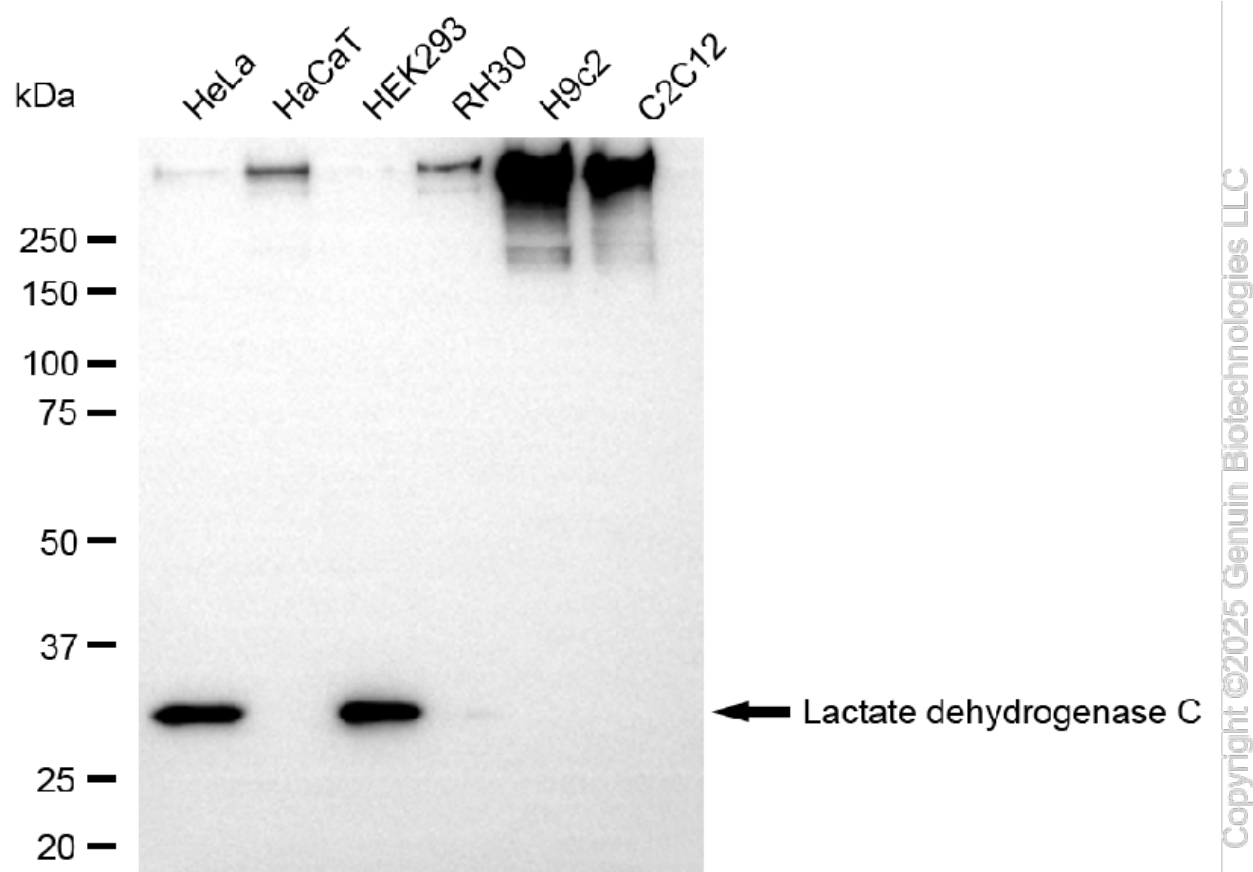
ORDERS

SALES@GENUINBIOTECH.COM
FAX: +1-540-855-7041

WWW.GENUINBIOTECH.COM

KD-Validated Anti-Lactate Dehydrogenase C Rabbit Monoclonal Antibody

PAGE 2



Western blotting analysis using anti-lactate dehydrogenase C antibody (Cat#65579). Total cell lysates (30 μ g) from various cell lines were loaded and separated by SDS-PAGE. The blot was incubated with anti-lactate dehydrogenase C antibody (Cat#65579, 1:5,000) and HRP-conjugated goat anti-rabbit secondary antibody (Cat#201, 1:20,000) respectively. Image was developed using NaQ™ ECL Substrate Kit (Cat#716).

SUPPORT

SUPPORT@GENUINBIOTECH.COM
TEL: +1-540-855-7041

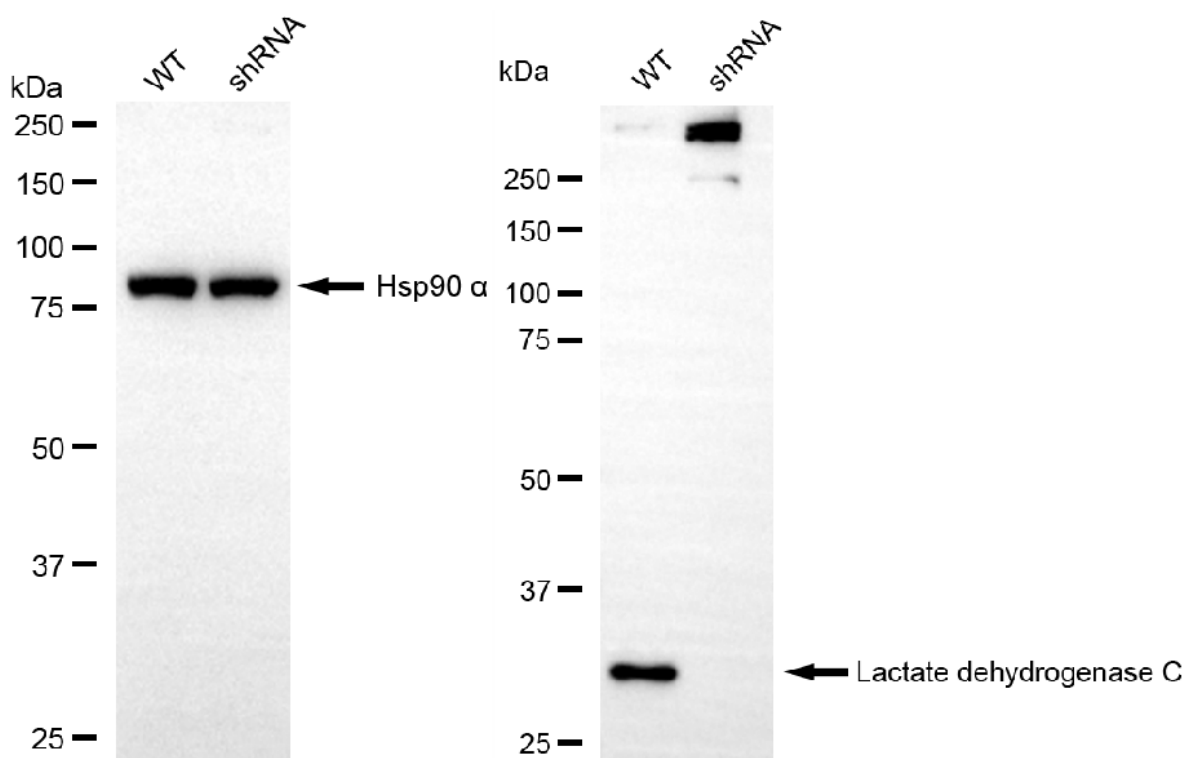
ORDERS

SALES@GENUINBIOTECH.COM
FAX: +1-540-855-7041

WWW.GENUINBIOTECH.COM

KD-Validated Anti-Lactate Dehydrogenase C Rabbit Monoclonal Antibody

PAGE 3



Copyright ©2025 Genuin Biotechnologies LLC

Western blotting analysis using anti-lactate dehydrogenase C antibody (Cat#65579). Lactate dehydrogenase C expression in wild-type (WT) and lactate dehydrogenase C (LDHC) shRNA knockdown (KD) HeLa cells with 20 µg of total cell lysates. Hsp90 α serves as a loading control. The blot was incubated with anti-lactate dehydrogenase C antibody (Cat#65579, 1:5,000) and HRP-conjugated goat anti-rabbit secondary antibody (Cat#201, 1:20,000) respectively. Image was developed using NaQ™ ECL Substrate Kit (Cat#716).

SUPPORT

SUPPORT@GENUINBIOTECH.COM
TEL: +1-540-855-7041

ORDERS

SALES@GENUINBIOTECH.COM
FAX: +1-540-855-7041

WWW.GENUINBIOTECH.COM