

KD-Validated Anti-NDUFB2 Rabbit Monoclonal Antibody



Catalog #: 65582

Aliases

NDUFB2; NADH:Ubiquinone Oxidoreductase Subunit B2; CI-AGGG; NADH-Ubiquinone Oxidoreductase AGGG Subunit; AGGG; NADH Dehydrogenase [Ubiquinone] 1 Beta Subcomplex Subunit 2, Mitochondrial; NADH Dehydrogenase (Ubiquinone) 1 Beta Subcomplex, 2, 8kDa; Complex I AGGG Subunit; Complex I-AGGG; NADH Dehydrogenase (Ubiquinone) 1 Beta Subcomplex, 2 (8kD, AGGG)

Background

Gene Name: NDUFB2

NCBI Gene Entry: [4708](#)

UniProt Entry: [O95178](#)

Application Information

Molecular Weight: Predicted, 12 kDa; observed, 12 kDa

Clonality: Rabbit monoclonal antibody

Clone ID: 25GB4370

Species Reactivity: Human, mouse, rat

Applications Tested: Western blotting (WB), immunocytochemistry (IC), flow cytometry (FCM)

Immunogen

Recombinant protein of human NDUFB2

Isotype

Rabbit IgG

Storage Buffer

Supplied in PBS (pH 7.4) containing 50% glycerol, and 0.02% sodium azide.

Storage

Store at -20 °C for one year.

Recommended Dilutions

Western Blotting (WB): 1:1,000-1:5,000

Immunocytochemistry (IC): 1:100-1:1,000

Flow Cytometry (FCM): 1:2,000

SUPPORT

SUPPORT@GENUINBIOTECH.COM
TEL: +1-540-855-7041

ORDERS

SALES@GENUINBIOTECH.COM
FAX: +1-540-855-7041

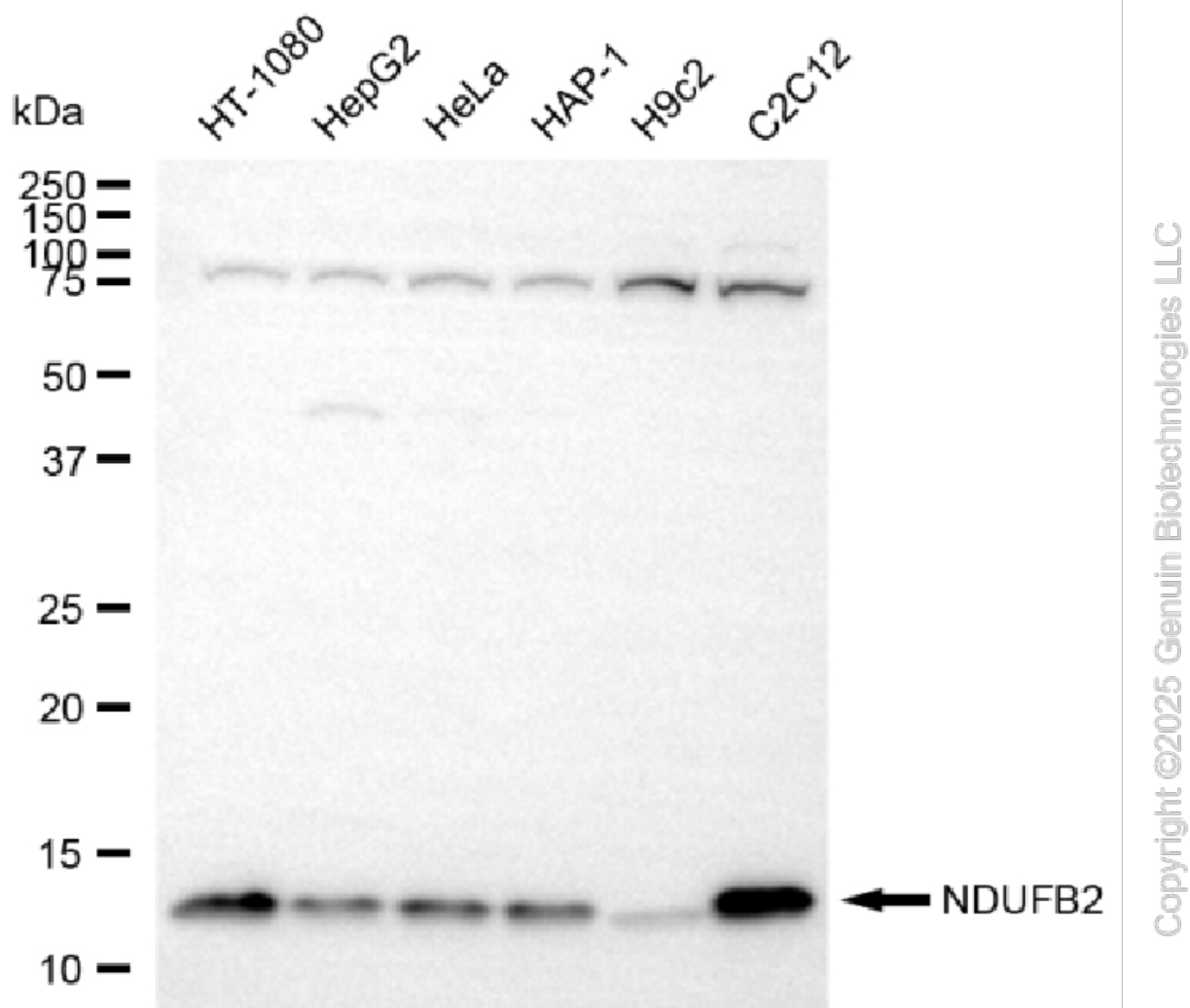
WWW.GENUINBIOTECH.COM

KD-Validated Anti-NDUFB2 Rabbit Monoclonal Antibody

PAGE 2

Note: This product is for research use only.

Validation Data



Western blotting analysis using anti-NDUFB2 antibody (Cat#65582). Total cell lysates (30 µg) from various cell lines were loaded and separated by SDS-PAGE. The blot was incubated with anti-NDUFB2 antibody (Cat#65582, 1:5,000) and HRP-conjugated goat anti-rabbit secondary antibody (Cat#201, 1:20,000) respectively. Image was developed using FeQ™ ECL Substrate Kit (Cat#226).

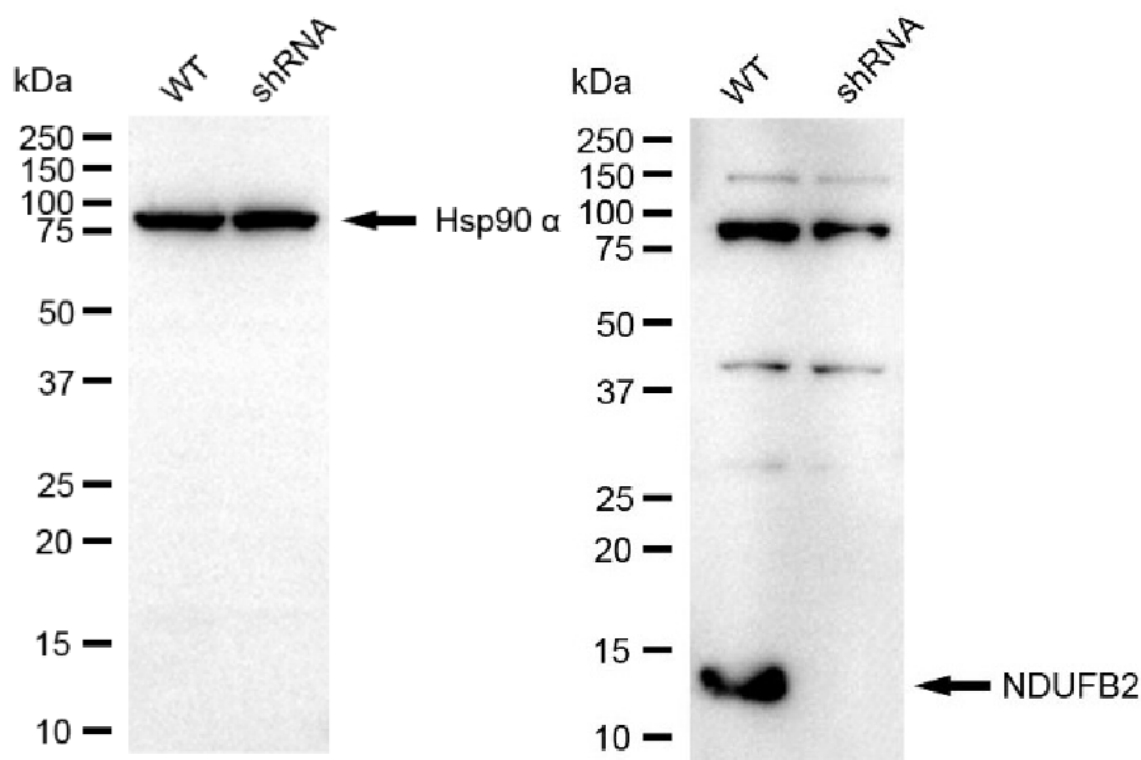
SUPPORT

SUPPORT@GENUINBIOTECH.COM
TEL: +1-540-855-7041

ORDERS

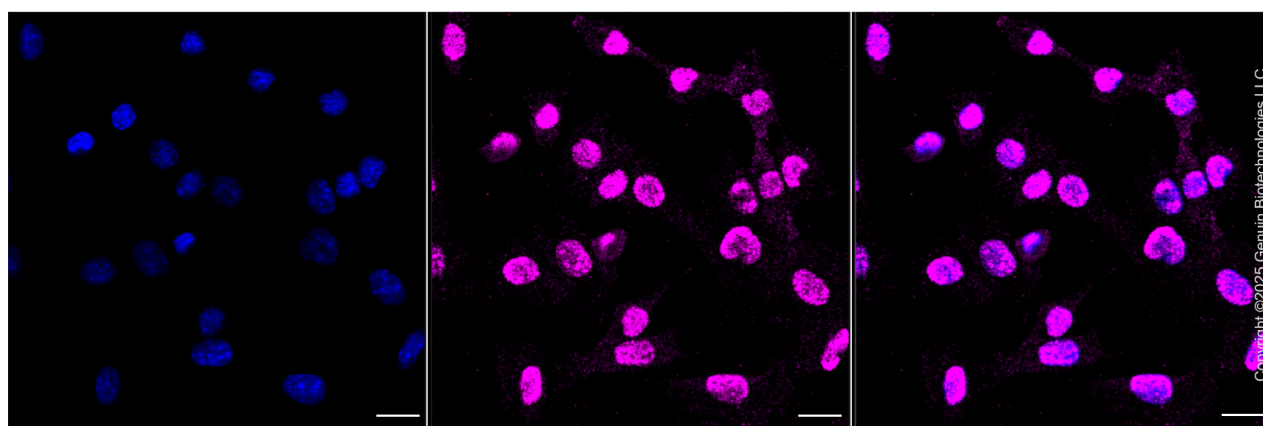
SALES@GENUINBIOTECH.COM
FAX: +1-540-855-7041

WWW.GENUINBIOTECH.COM



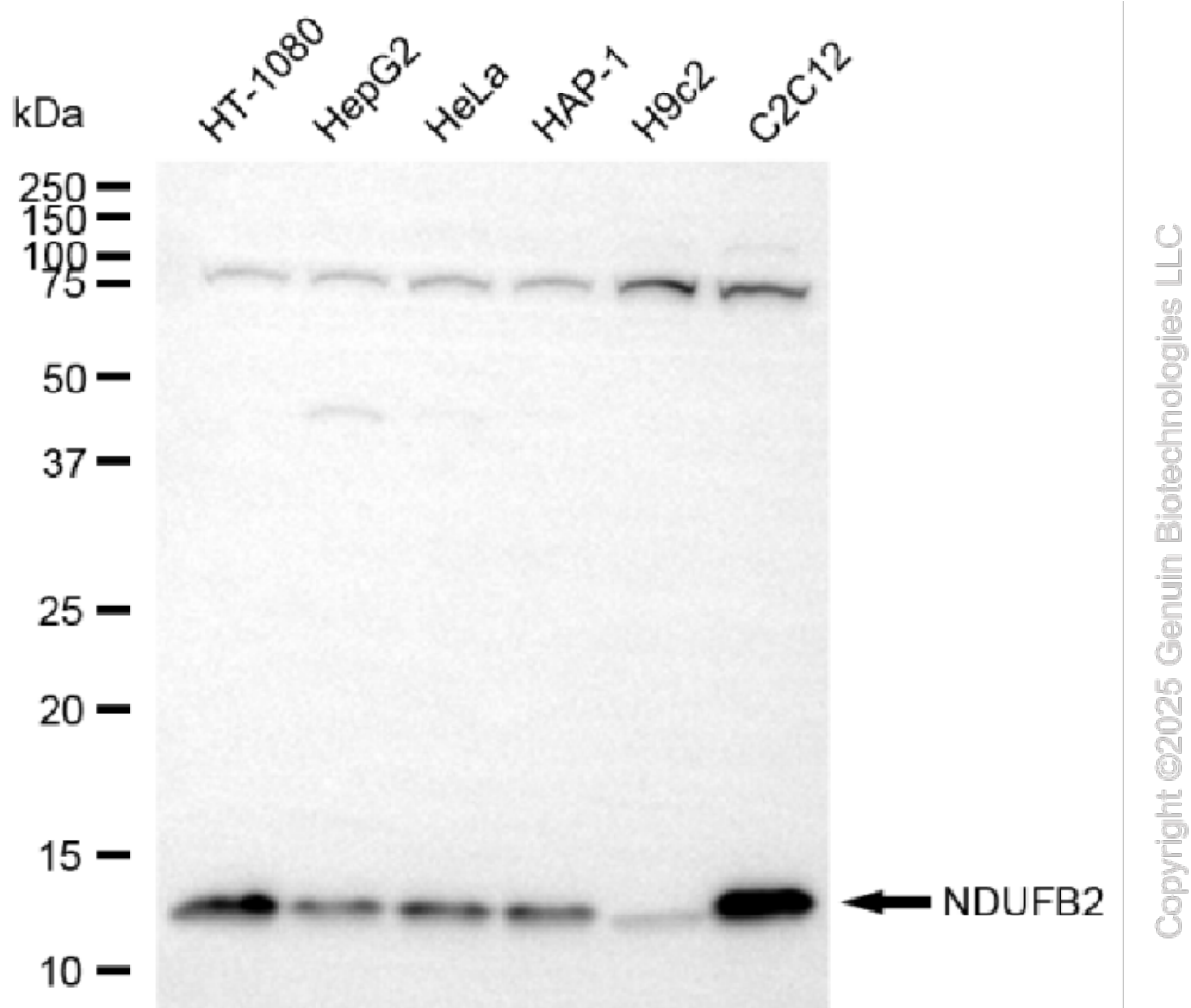
Copyright ©2025 Genuin Biotechnologies LLC

Western blotting analysis using anti-NDUFB2 antibody (Cat#65582). NDUFB2 expression in wild-type (WT) and NDUFB2 shRNA knockdown (KD) HeLa cells with 20 µg of total cell lysates. Hsp90 α serves as a loading control. The blot was incubated with anti-NDUFB2 antibody (Cat#65582, 1:5,000) and HRP-conjugated goat anti-rabbit secondary antibody (Cat#201, 1:20,000) respectively. Image was developed using FeQ™ ECL Substrate Kit (Cat#226).

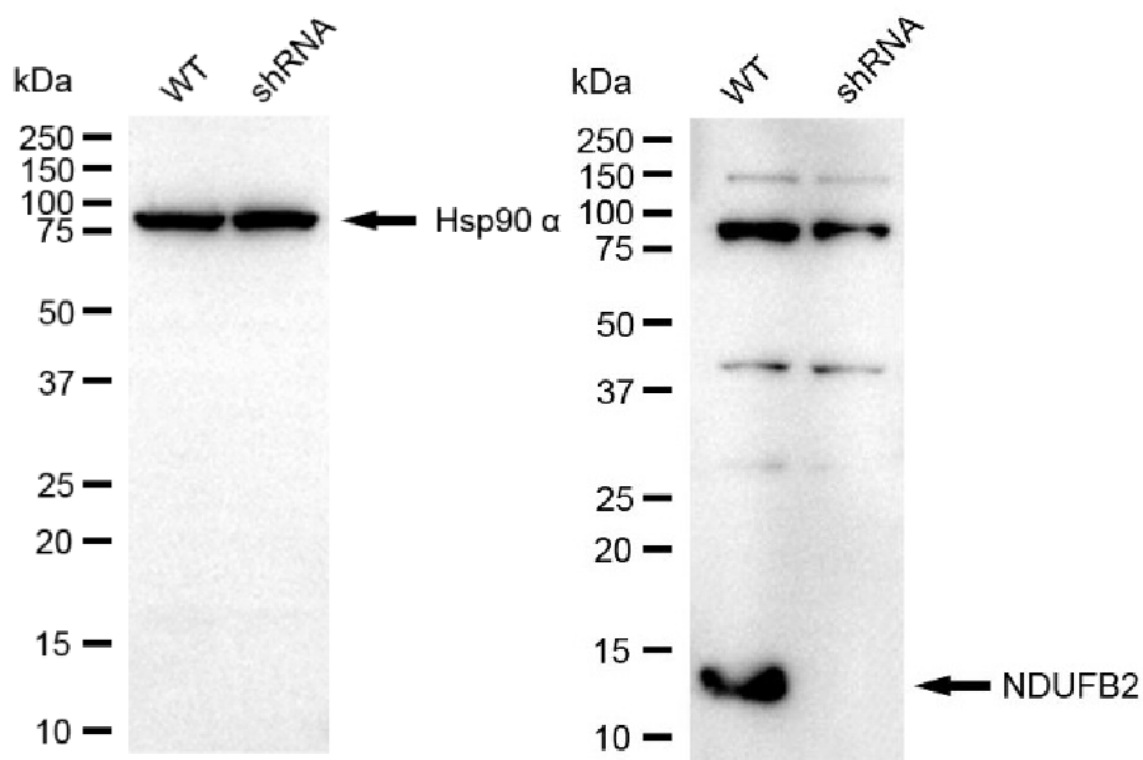


Copyright ©2025 Genuin Biotechnologies LLC

Immunocytochemical staining of C2C12 cells with anti-NDUFB2 antibody (Cat#65582, 1:1,000). Nuclei were stained blue with DAPI; NDUFB2 was stained magenta with Alexa Fluor® 647. Images were taken using Leica stellaris 5. Protein abundance based on laser Intensity and smart gain: Medium. Scale bar, 20 µm.

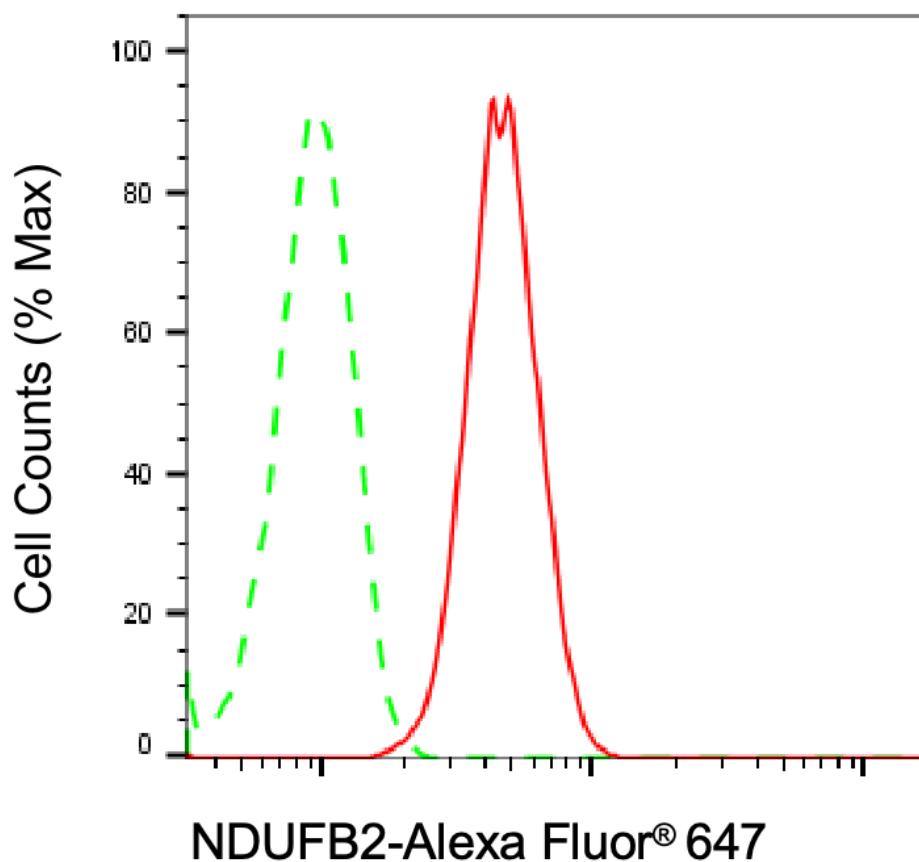


Western blotting analysis using anti-NDUFB2 antibody (Cat#65582). Total cell lysates (30 μ g) from various cell lines were loaded and separated by SDS-PAGE. The blot was incubated with anti-NDUFB2 antibody (Cat#65582, 1:5,000) and HRP-conjugated goat anti-rabbit secondary antibody (Cat#201, 1:20,000) respectively. Image was developed using FeQ™ ECL Substrate Kit (Cat#226).



Copyright ©2025 Genuin Biotechnologies LLC

Western blotting analysis using anti-NDUFB2 antibody (Cat#65582). NDUFB2 expression in wild-type (WT) and NDUFB2 shRNA knockdown (KD) HeLa cells with 20 µg of total cell lysates. Hsp90 α serves as a loading control. The blot was incubated with anti-NDUFB2 antibody (Cat#65582, 1:5,000) and HRP-conjugated goat anti-rabbit secondary antibody (Cat#201, 1:20,000) respectively. Image was developed using FeQ™ ECL Substrate Kit (Cat#226).



Copyright ©2025 Genuin Biotechnologies LLC

Flow cytometric analysis of NDUFB2 expression in C2C12 cells using anti-NDUFB2 antibody (Cat#65582, 1:2,000). Green, isotype control; red, NDUFB2.