

KD-Validated Anti-POLDIP2 Rabbit Monoclonal Antibody



Catalog #: 65591

Aliases

POLDIP2; DNA Polymerase Delta Interacting Protein 2; PDIP38; Polymerase (DNA-Directed), Delta Interacting Protein 2; 38 KDa DNA Polymerase Delta Interaction Protein; Polymerase Delta-Interacting Protein 2; DKFZP586F1524; POLD4; P38; Polymerase (DNA) Delta Interacting Protein 2; Polymerase Delta Interacting Protein 38

Background

Gene Name: POLDIP2

NCBI Gene Entry: [26073](#)

UniProt Entry: [Q9Y2S7](#)

Application Information

Molecular Weight: Predicted, 42 kDa; observed, 35 kDa

Clonality: Rabbit monoclonal antibody

Clone ID: 25GB4415

Species Reactivity: Human, mouse, rat

Applications Tested: Western blotting (WB), flow cytometry (FCM), immunocytochemistry (IC)

Immunogen

A synthesized peptide derived from human POLDIP2

Isotype

Rabbit IgG

Storage Buffer

Supplied in PBS (pH 7.4) containing 50% glycerol, and 0.02% sodium azide.

Storage

Store at -20 °C for one year.

Recommended Dilutions

Western Blotting (WB): 1:1,000-1:5,000

Flow Cytometry (FCM): 1:2,000

Immunocytochemistry (IC): 1:100-1:1,000

SUPPORT

SUPPORT@GENUINBIOTECH.COM
TEL: +1-540-855-7041

ORDERS

SALES@GENUINBIOTECH.COM
FAX: +1-540-855-7041

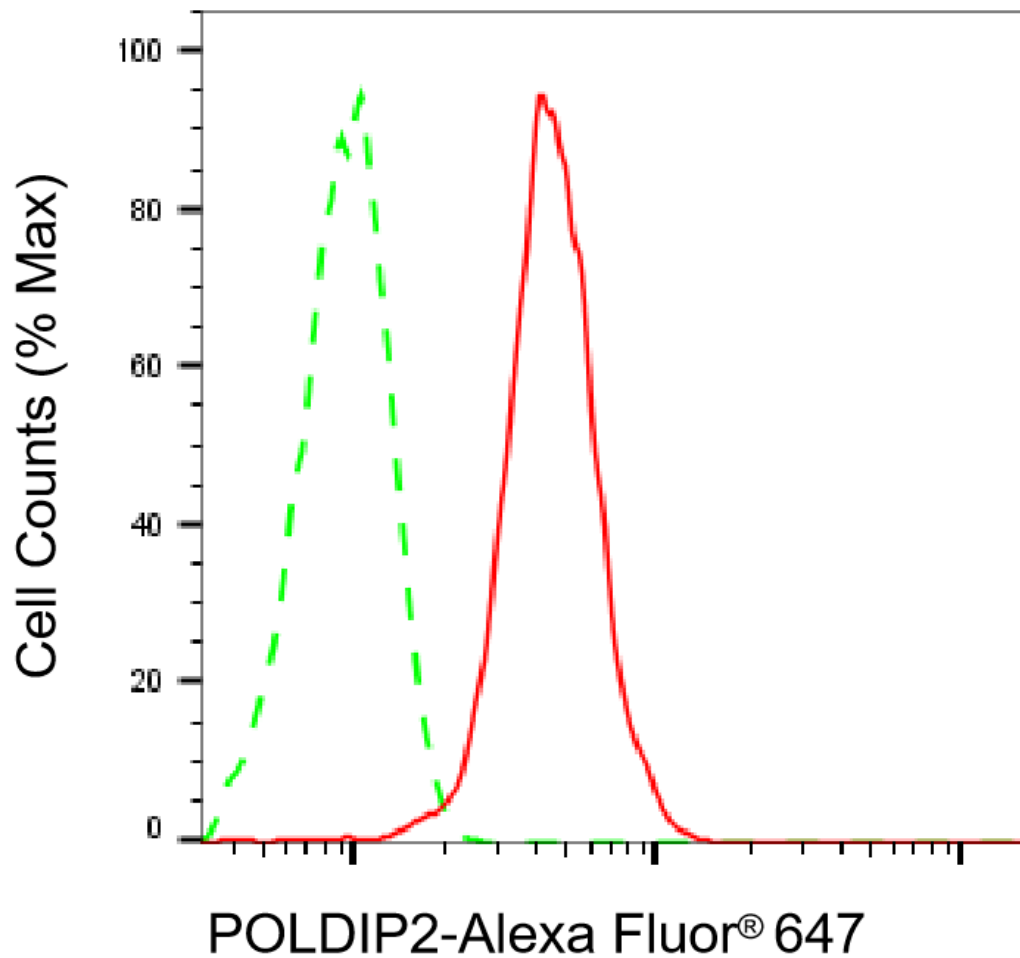
WWW.GENUINBIOTECH.COM

KD-Validated Anti-POLDIP2 Rabbit Monoclonal Antibody

PAGE 2

Note: This product is for research use only.

Validation Data



Copyright ©2025 Genuin Biotechnologies LLC

Flow cytometric analysis of POLDIP2 expression in HepG2 cells using anti-POLDIP2 antibody (Cat#65591, 1:2,000). Green, isotype control; red, POLDIP2.

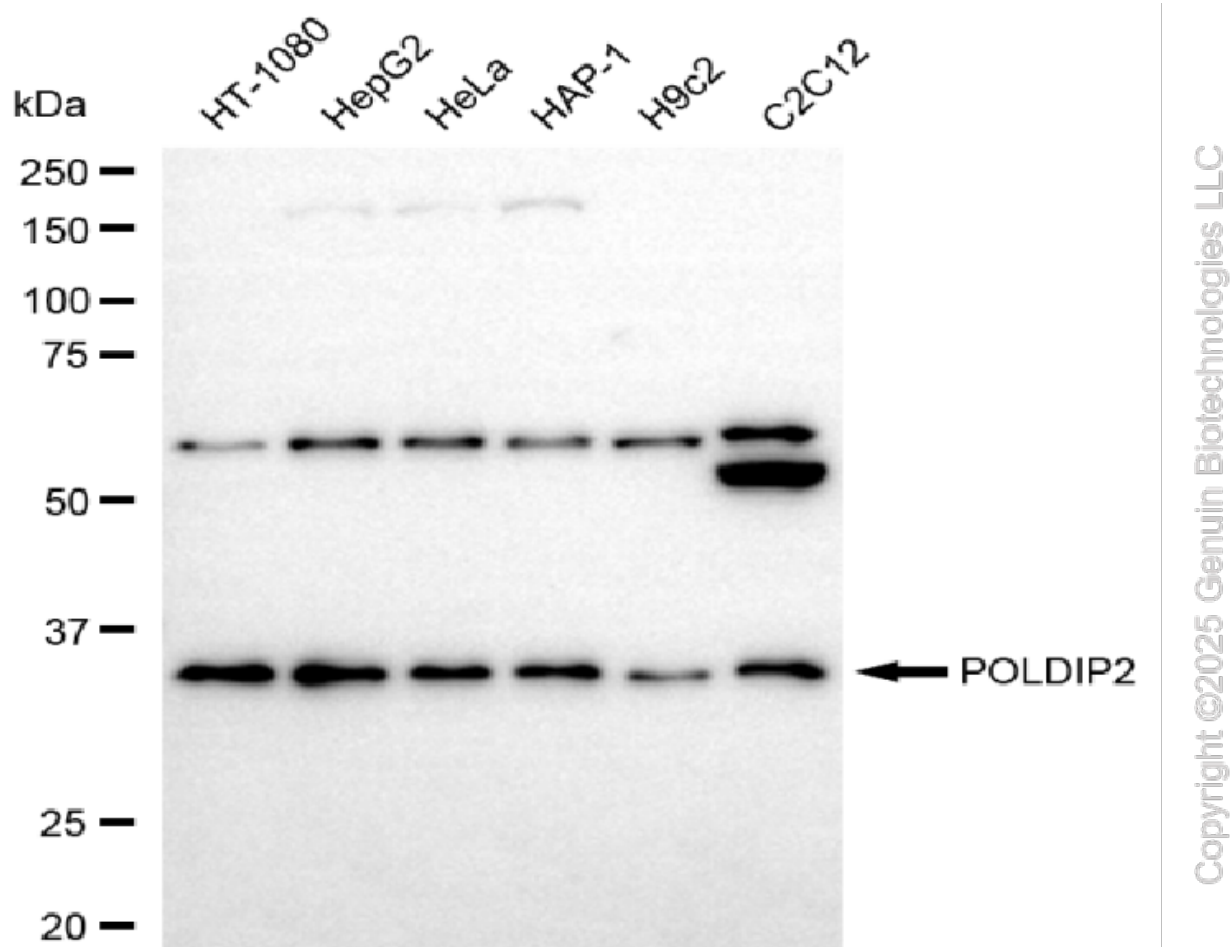
SUPPORT

SUPPORT@GENUINBIOTECH.COM
TEL: +1-540-855-7041

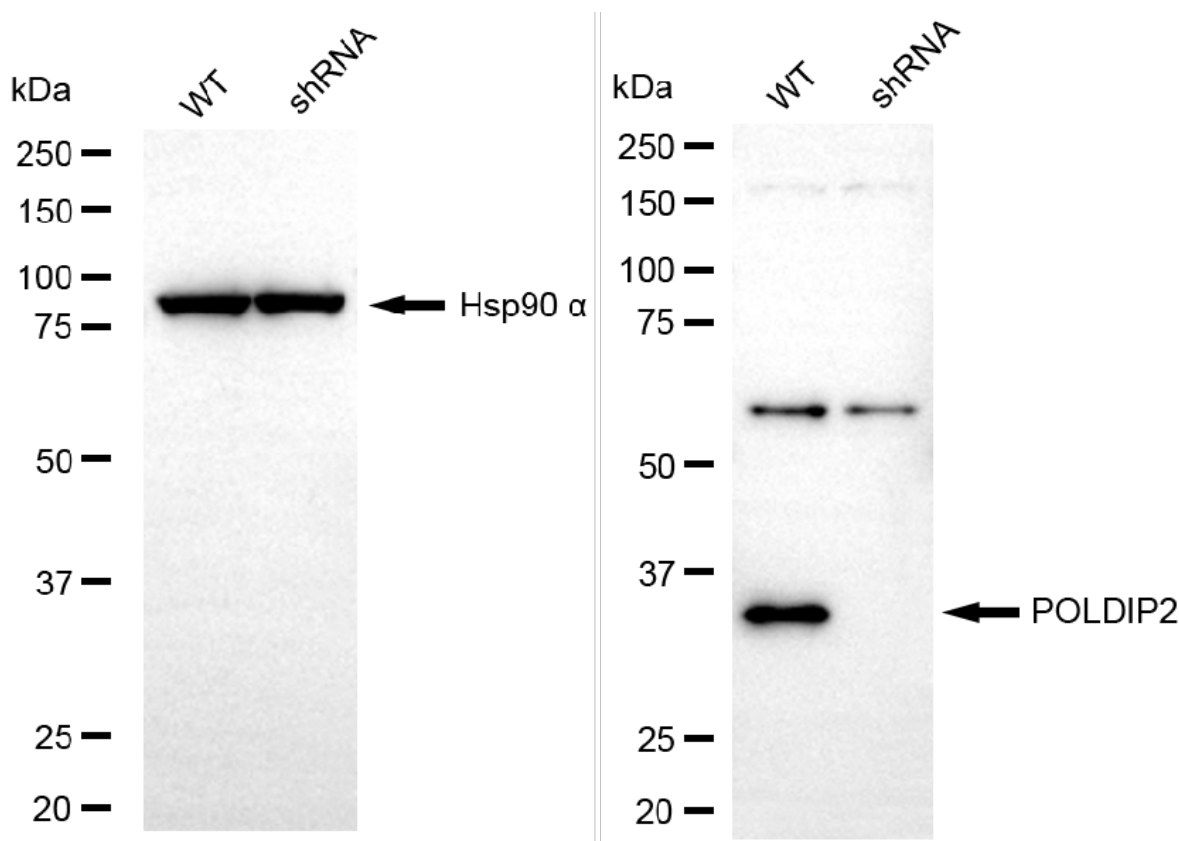
ORDERS

SALES@GENUINBIOTECH.COM
FAX: +1-540-855-7041

WWW.GENUINBIOTECH.COM

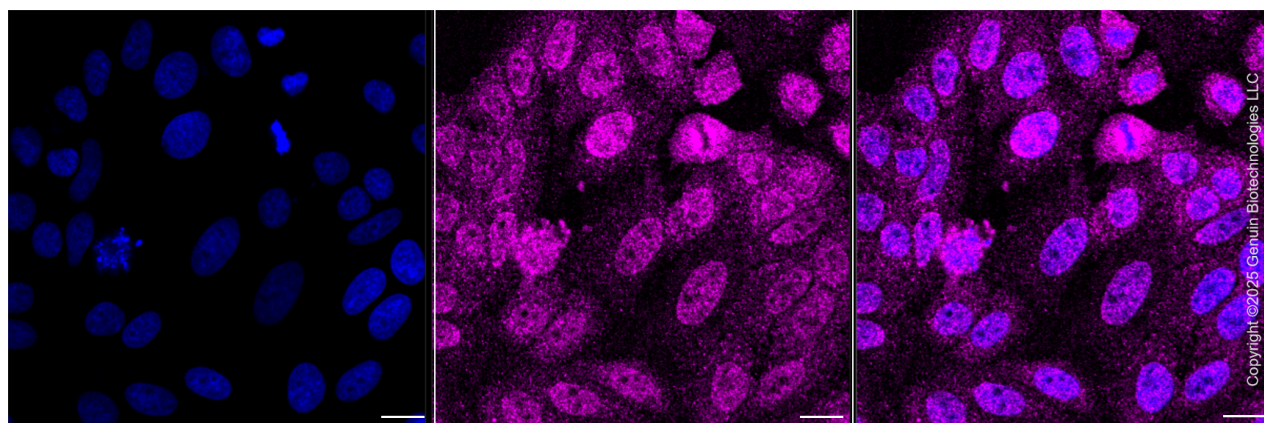


Western blotting analysis using anti-POLDIP2 antibody (Cat#65591). Total cell lysates (30 µg) from various cell lines were loaded and separated by SDS-PAGE. The blot was incubated with anti-POLDIP2 antibody (Cat#65591, 1:5,000) and HRP-conjugated goat anti-rabbit secondary antibody (Cat#201, 1:20,000) respectively. Image was developed using NaQ™ ECL Substrate Kit (Cat#716).



Copyright ©2025 Genuin Biotechnologies LLC

Western blotting analysis using anti-POLDIP2 antibody (Cat#65591). POLDIP2 expression in wild-type (WT) and POLDIP2 shRNA knockdown (KD) HeLa cells with 20 µg of total cell lysates. Hsp90 α serves as a loading control. The blot was incubated with anti-POLDIP2 antibody (Cat#65591, 1:5,000) and HRP-conjugated goat anti-rabbit secondary antibody (Cat#201, 1:20,000) respectively. Image was developed using NaQ™ ECL Substrate Kit (Cat#716).



Copyright ©2025 Genuin Biotechnologies LLC

Immunocytochemical staining of HepG2 cells with anti-POLDIP2 antibody (Cat#65591, 1:1,000). Nuclei were stained blue with DAPI; POLDIP2 was stained magenta with Alexa Fluor® 647. Images were taken using Leica stellaris 5. Protein abundance based on laser Intensity and smart gain: Low. Scale bar, 20 µm.

SUPPORT

SUPPORT@GENUINBIOTECH.COM
TEL: +1-540-855-7041

ORDERS

SALES@GENUINBIOTECH.COM
FAX: +1-540-855-7041

WWW.GENUINBIOTECH.COM