

KD-Validated Anti-RAB10 Rabbit Monoclonal Antibody



Catalog #: 65596

Aliases

RAB10; RAB10, Member RAS Oncogene Family; Ras-Related GTP-Binding Protein; Ras-Related Protein Rab-10; GTP-Binding Protein RAB10; EC 3.6.5.2

Background

Gene Name: RAB10

NCBI Gene Entry: [10890](#)

UniProt Entry: [P61026](#)

Application Information

Molecular Weight: Predicted, 23 kDa; observed, 20 kDa

Clonality: Rabbit monoclonal antibody

Clone ID: 25GB4440

Species Reactivity: Human, mouse, rat

Applications Tested: Western blotting (WB), immunocytochemistry (IC), flow cytometry (FCM)

Immunogen

Recombinant protein of human RAB10

Isotype

Rabbit IgG

Storage Buffer

Supplied in PBS (pH 7.4) containing 50% glycerol, and 0.02% sodium azide.

Storage

Store at -20 °C for one year.

Recommended Dilutions

Western Blotting (WB): 1:1,000-1:5,000

Flow Cytometry (FCM): 1:2,000

Immunocytochemistry (IC): 1:100-1:1,000

Note: This product is for research use only.

Validation Data

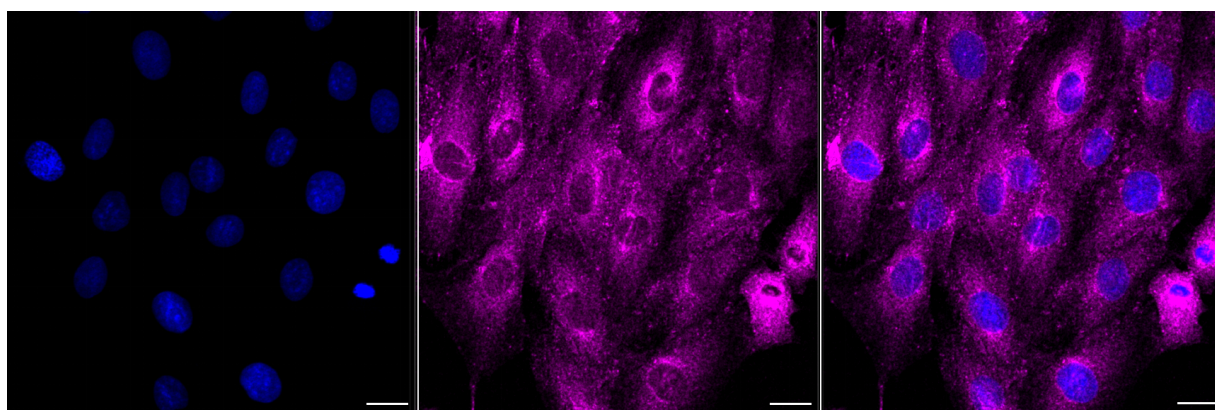
SUPPORT

SUPPORT@GENUINBIOTECH.COM
TEL: +1-540-855-7041

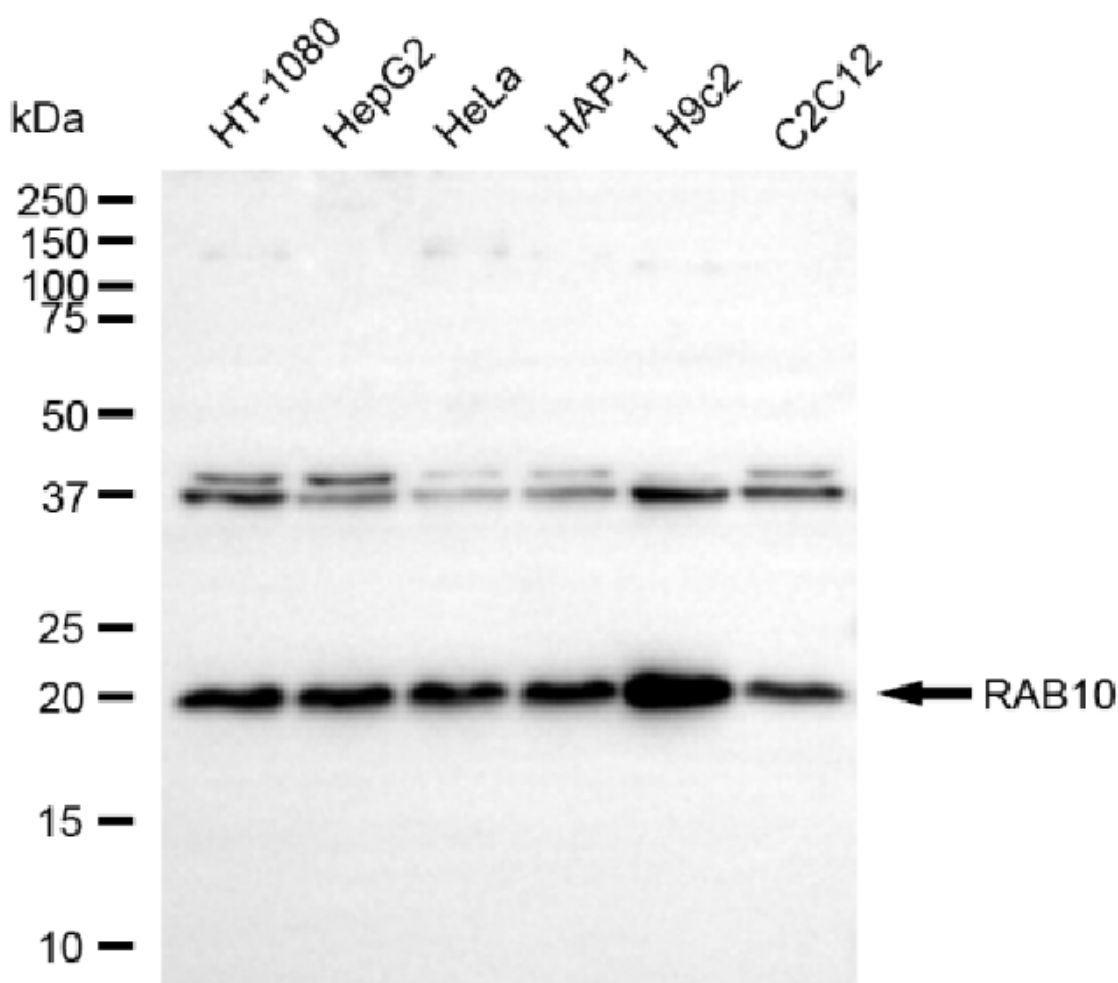
ORDERS

SALES@GENUINBIOTECH.COM
FAX: +1-540-855-7041

WWW.GENUINBIOTECH.COM



Immunocytochemical staining of H9c2 cells with anti-RAB10 antibody (Cat#65596, 1:1,000) . Nuclei were stained blue with DAPI; RAB10 was stained magenta with Alexa Fluor® 647. Images were taken using Leica stellaris 5. Protein abundance based on laser Intensity and smart gain: Medium. Scale bar, 20 µm.



Western blotting analysis using anti-RAB10 antibody (Cat#65596). Total cell lysates (30 µg) from

SUPPORT

SUPPORT@GENUINBIOTECH.COM
TEL: +1-540-855-7041

ORDERS

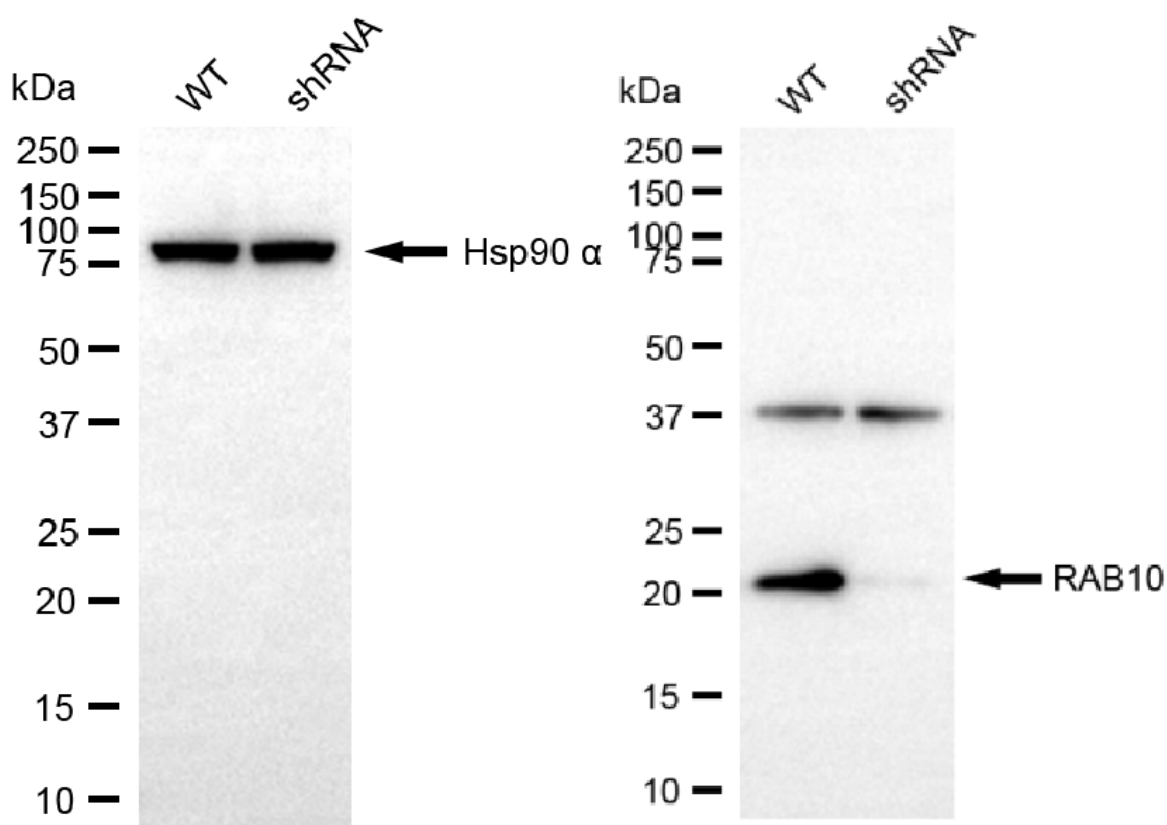
SALES@GENUINBIOTECH.COM
FAX: +1-540-855-7041

WWW.GENUINBIOTECH.COM

KD-Validated Anti-RAB10 Rabbit Monoclonal Antibody

PAGE 3

various cell lines were loaded and separated by SDS-PAGE. The blot was incubated with anti-RAB10 antibody (Cat#65596, 1:5,000) and HRP-conjugated goat anti-rabbit secondary antibody (Cat#201, 1:20,000) respectively. Image was developed using NaQ™ ECL Substrate Kit (Cat#716).



Copyright ©2025 Genuin Biotechnologies LLC

Western blotting analysis using anti-RAB10 antibody (Cat#65596). RAB10 expression in wild-type (WT) and RAB10 shRNA knockdown (KD) HeLa cells with 20 µg of total cell lysates. Hsp90 α serves as a loading control. The blot was incubated with anti-RAB10 antibody (Cat#65596, 1:5,000) and HRP-conjugated goat anti-rabbit secondary antibody (Cat#201, 1:20,000) respectively. Image was developed using NaQ™ ECL Substrate Kit (Cat#716).

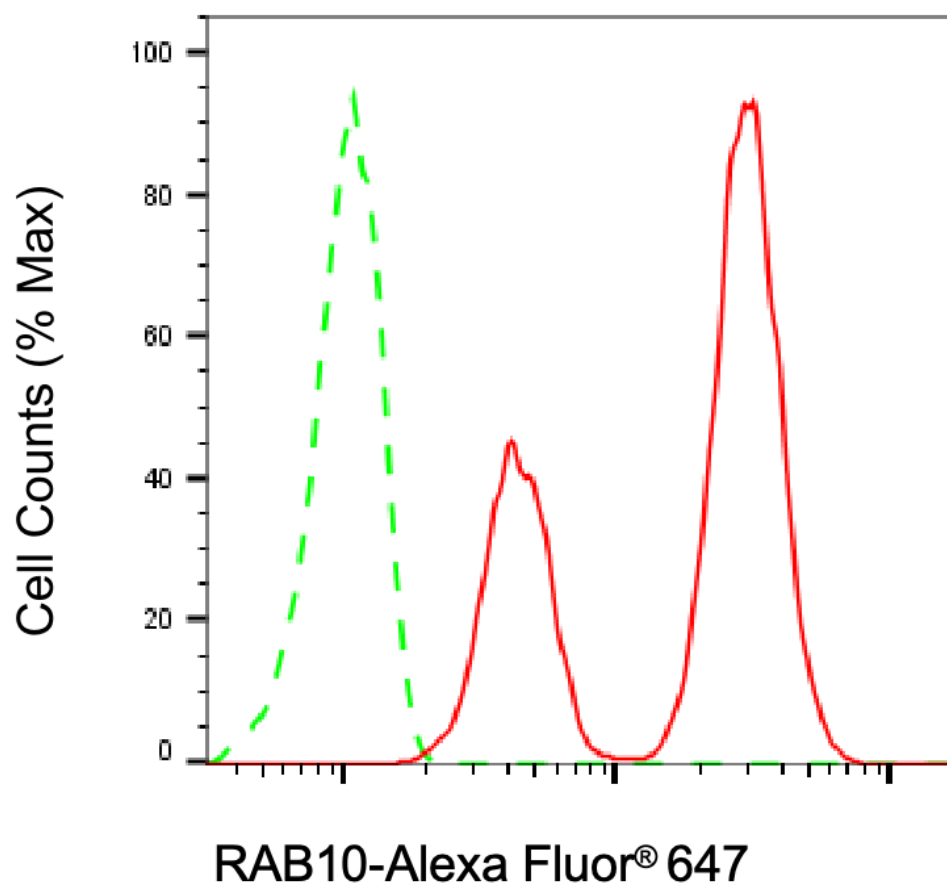
SUPPORT

SUPPORT@GENUINBIOTECH.COM
TEL: +1-540-855-7041

ORDERS

SALES@GENUINBIOTECH.COM
FAX: +1-540-855-7041

WWW.GENUINBIOTECH.COM



Copyright ©2025 Genuin Biotechnologies LLC

Flow cytometric analysis of RAB10 expression in H9c2 cells using anti-RAB10 antibody (Cat#65596, 1:2,000). Green, isotype control; red, RAB10.