

KD-Validated Anti-Septin 7 Rabbit Monoclonal Antibody



Catalog #: 65602

Aliases

SEPTIN7; Septin 7; Septin-7; SEPT7A; CDC10; SEPT7; CDC3; CDC10 Protein Homolog; CDC10 (Cell Division Cycle 10, S. Cerevisiae, Homolog); CDC10 Cell Division Cycle 10 Homolog (S. Cerevisiae); NBLA02942

Background

Gene Name: SEPTIN7

NCBI Gene Entry: [989](#)

UniProt Entry: [Q16181](#)

Application Information

Molecular Weight: Predicted, 51 kDa; observed, 45 kDa

Clonality: Rabbit monoclonal antibody

Clone ID: 25GB4470

Species Reactivity: Human, mouse, rat

Applications Tested: Western blotting (WB), flow cytometry (FCM)

Immunogen

Recombinant protein of human Septin 7

Isotype

Rabbit IgG

Storage Buffer

Supplied in PBS (pH 7.4) containing 50% glycerol, and 0.02% sodium azide.

Storage

Store at -20 °C for one year.

Recommended Dilutions

Western Blotting (WB): 1:1,000-1:5,000

Flow Cytometry (FCM): 1:2,000

Note: This product is for research use only.

Validation Data

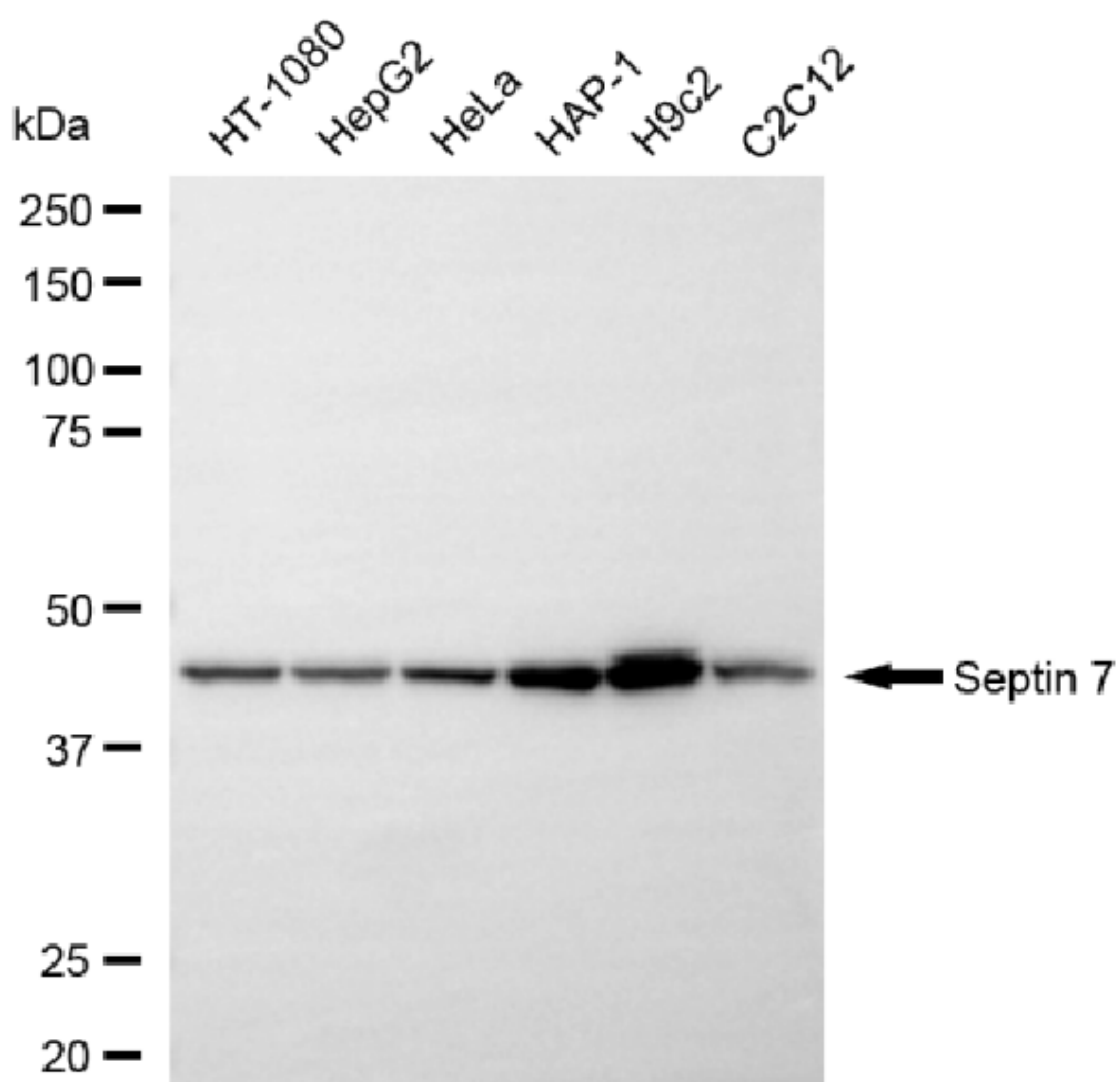
SUPPORT

SUPPORT@GENUINBIOTECH.COM
TEL: +1-540-855-7041

ORDERS

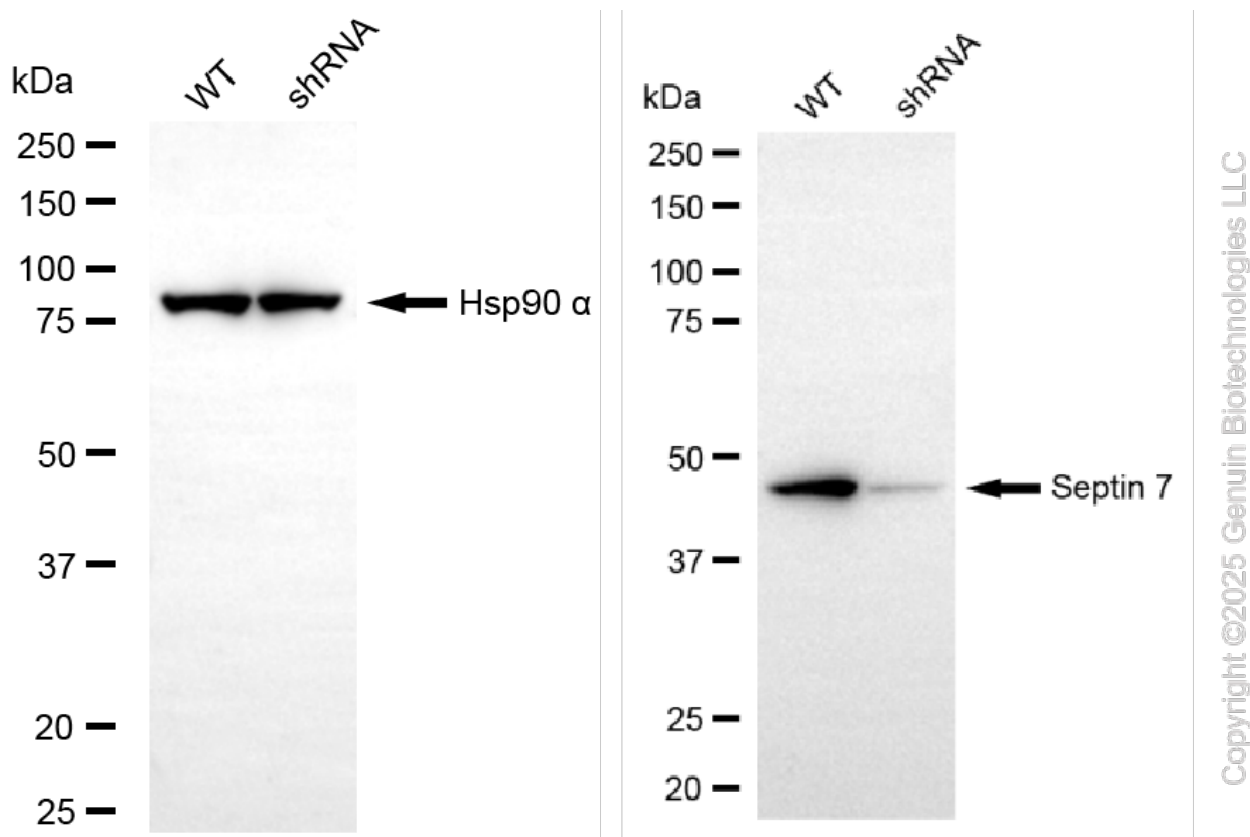
SALES@GENUINBIOTECH.COM
FAX: +1-540-855-7041

WWW.GENUINBIOTECH.COM

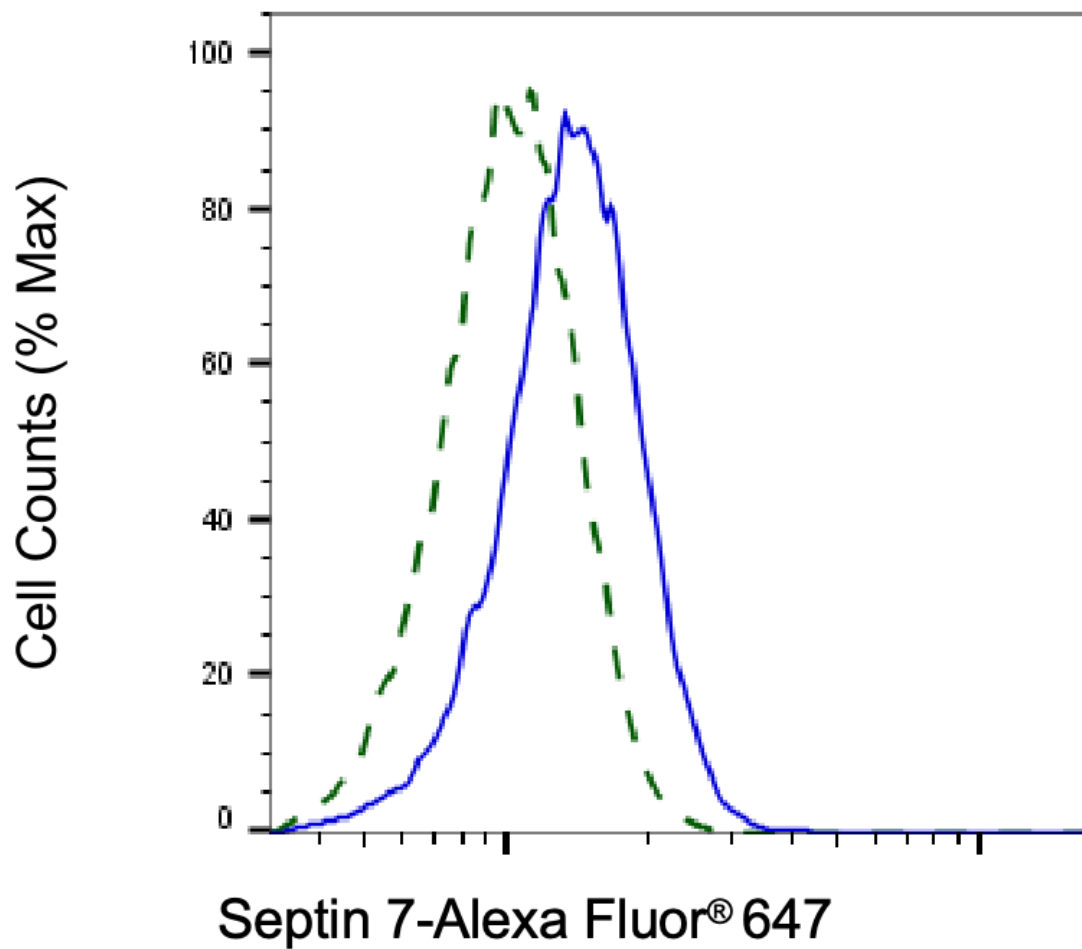


Copyright ©2025 Genuin Biotechnologies LLC

Western blotting analysis using anti-septin 7 antibody (Cat#65602). Total cell lysates (30 µg) from various cell lines were loaded and separated by SDS-PAGE. The blot was incubated with anti-septin 7 antibody (Cat#65602, 1:5,000) and HRP-conjugated goat anti-rabbit secondary antibody (Cat#201, 1:20,000) respectively. Image was developed using NaQ™ ECL Substrate Kit (Cat#716).



Western blotting analysis using anti-septin 7 antibody (Cat#65602). Septin 7 expression in wild-type (WT) and septin 7 (SEPTIN7) shRNA knockdown (KD) HeLa cells with 20 µg of total cell lysates. Hsp90 α serves as a loading control. The blot was incubated with anti-septin 7 antibody (Cat#65602, 1:5,000) and HRP-conjugated goat anti-rabbit secondary antibody (Cat#201, 1:20,000) respectively. Image was developed using NaQ™ ECL Substrate Kit (Cat#716).



Copyright ©2025 Genuin Biotechnologies LLC

Validation of Septin 7 knockdown using flow cytometry. Wild-type(WT, Blue) and knockdown(KD, Green) HeLa cells were stained with anti-Septin 7 antibody (Cat#65602, 1:2,000) and analyzed using BD flow cytometer.