

# KD-Validated Anti-SLBP Rabbit Monoclonal Antibody



**Catalog #: 65605**

## Aliases

SLBP; Stem-Loop Histone mRNA Binding Protein; HBP; Stem-Loop (Histone) Binding Protein; Histone RNA Hairpin-Binding Protein; Stem-Loop Binding Protein; Histone Binding Protein; Histone Stem-Loop Binding Protein; Histone Stem-Loop-Binding Protein; Hairpin Binding Protein, Histone

## Background

Gene Name: SLBP

NCBI Gene Entry: [7884](#)

UniProt Entry: [Q14493](#)

## Application Information

Molecular Weight: Predicted, 31 kDa; observed, 37 kDa

Clonality: Rabbit monoclonal antibody

Clone ID: 25GB4485

Species Reactivity: Human

Applications Tested: Western blotting (WB), flow cytometry (FCM)

## Immunogen

A synthesized peptide derived from human SLBP

## Isotype

Rabbit IgG

## Storage Buffer

Supplied in PBS (pH 7.4) containing 50% glycerol, and 0.02% sodium azide.

## Storage

Store at -20 °C for one year.

## Recommended Dilutions

Western Blotting (WB): 1:1,000-1:5,000

Flow Cytometry (FCM): 1:2,000

**Note:** This product is for research use only.

---

### SUPPORT

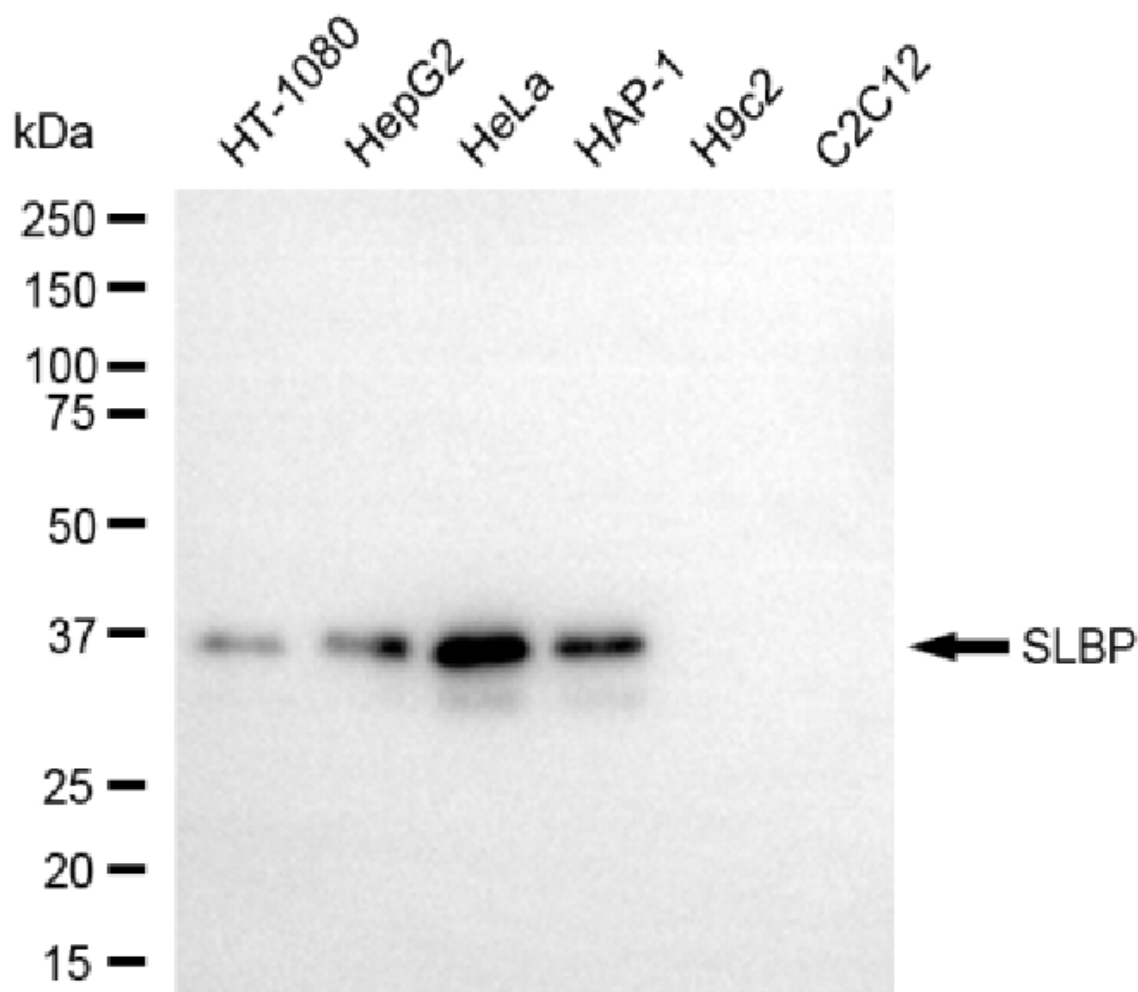
SUPPORT@GENUINBIOTECH.COM  
TEL: +1-540-855-7041

### ORDERS

SALES@GENUINBIOTECH.COM  
FAX: +1-540-855-7041

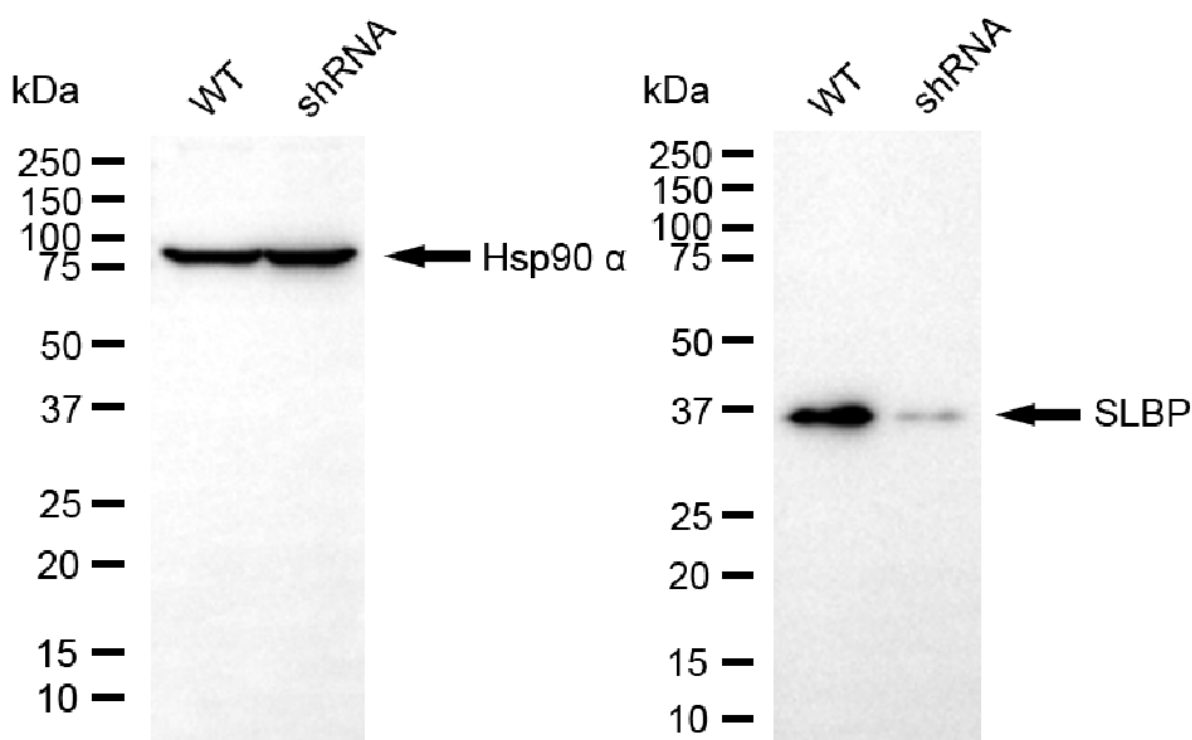
[WWW.GENUINBIOTECH.COM](http://WWW.GENUINBIOTECH.COM)

## Validation Data



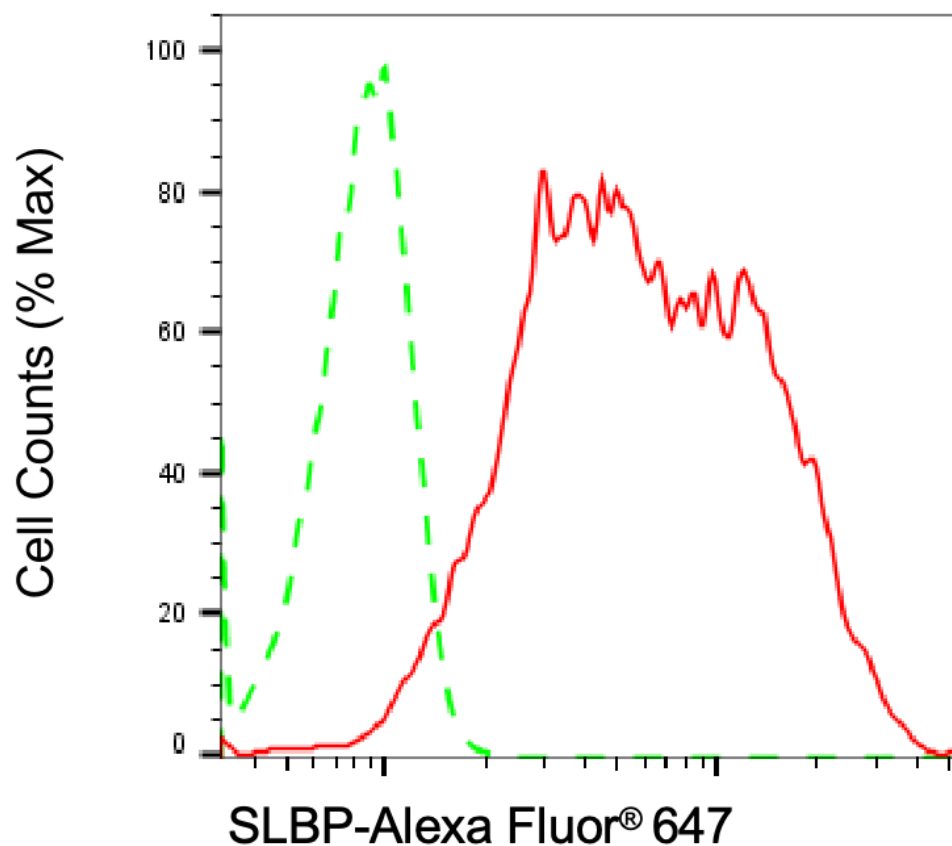
Copyright ©2025 Genuin Biotechnologies LLC

Western blotting analysis using anti-SLBP antibody (Cat#65605). Total cell lysates (30 µg) from various cell lines were loaded and separated by SDS-PAGE. The blot was incubated with anti-SLBP antibody (Cat#65605, 1:5,000) and HRP-conjugated goat anti-rabbit secondary antibody (Cat#201, 1:20,000) respectively. Image was developed using FeQ™ ECL Substrate Kit (Cat#226).



Copyright ©2025 Genuin Biotechnologies LLC

Western blotting analysis using anti-SLBP antibody (Cat#65605). SLBP expression in wild-type (WT) and SLBP shRNA knockdown (KD) HT-1080 cells with 30 µg of total cell lysates. Hsp90 α serves as a loading control. The blot was incubated with anti-SLBP antibody (Cat#65605, 1:5,000) and HRP-conjugated goat anti-rabbit secondary antibody (Cat#201, 1:20,000) respectively. Image was developed using NaQ™ ECL Substrate Kit (Cat#716).



Copyright ©2025 Genuin Biotechnologies LLC

Flow cytometric analysis of SLBP expression in HeLa cells using anti-SLBP antibody (Cat#65605, 1:2,000). Green, isotype control; red, SLBP.