

# KD-Validated Anti-SRP72 Rabbit Monoclonal Antibody



**Catalog #: 65606**

## Aliases

SRP72; Signal Recognition Particle 72; Signal Recognition Particle 72 KDa Protein; Signal Recognition Particle Subunit SRP72; Signal Recognition Particle 72kDa; Signal Recognition Particle 72kD; Epididymis Luminal Protein 103; HEL103; BMFS1; BMFF

## Background

Gene Name: SRP72

NCBI Gene Entry: [6731](#)

UniProt Entry: [O76094](#)

## Application Information

Molecular Weight: Predicted, 75 kDa; observed, 73 kDa

Clonality: Rabbit monoclonal antibody

Clone ID: 25GB4490

Species Reactivity: Human, mouse, rat

Applications Tested: Western blotting (WB), flow cytometry (FCM)

## Immunogen

A synthesized peptide derived from human SRP72

## Isotype

Rabbit IgG

## Storage Buffer

Supplied in PBS (pH 7.4) containing 50% glycerol, and 0.02% sodium azide.

## Storage

Store at -20 °C for one year.

## Recommended Dilutions

Western Blotting (WB): 1:1,000-1:5,000

Flow Cytometry (FCM): 1:2,000

**Note:** This product is for research use only.

## Validation Data

---

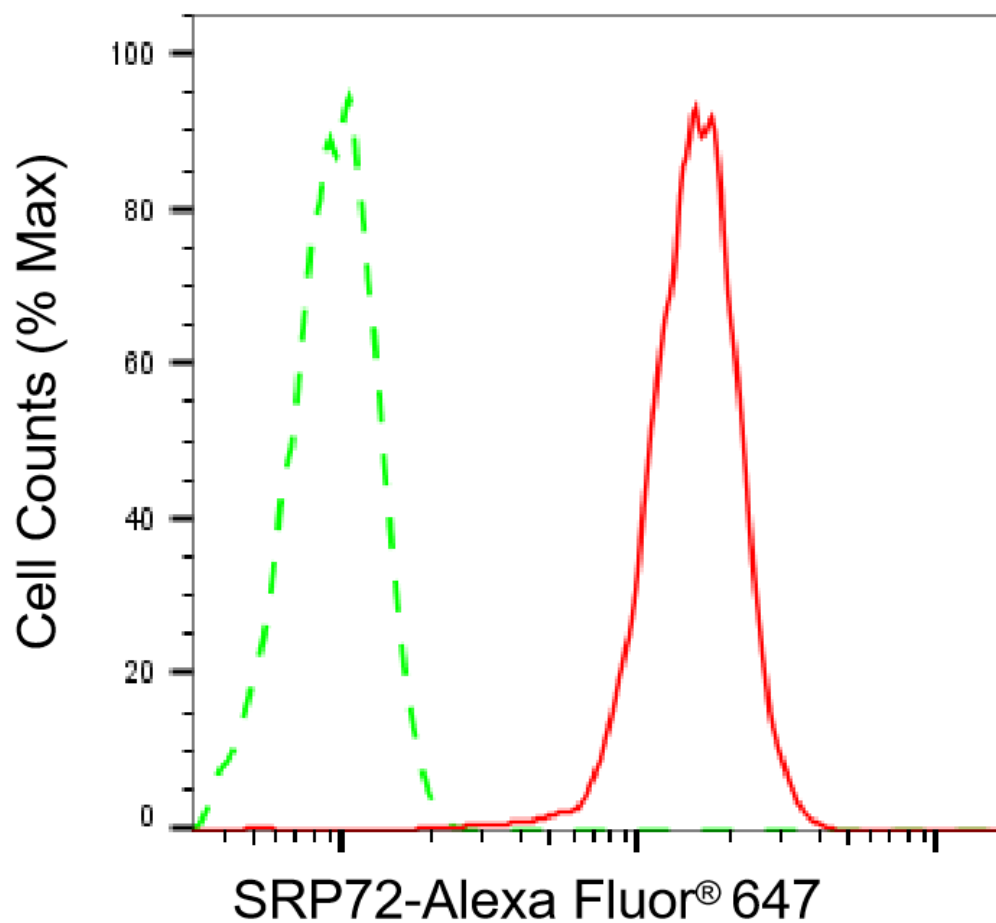
### SUPPORT

SUPPORT@GENUINBIOTECH.COM  
TEL: +1-540-855-7041

### ORDERS

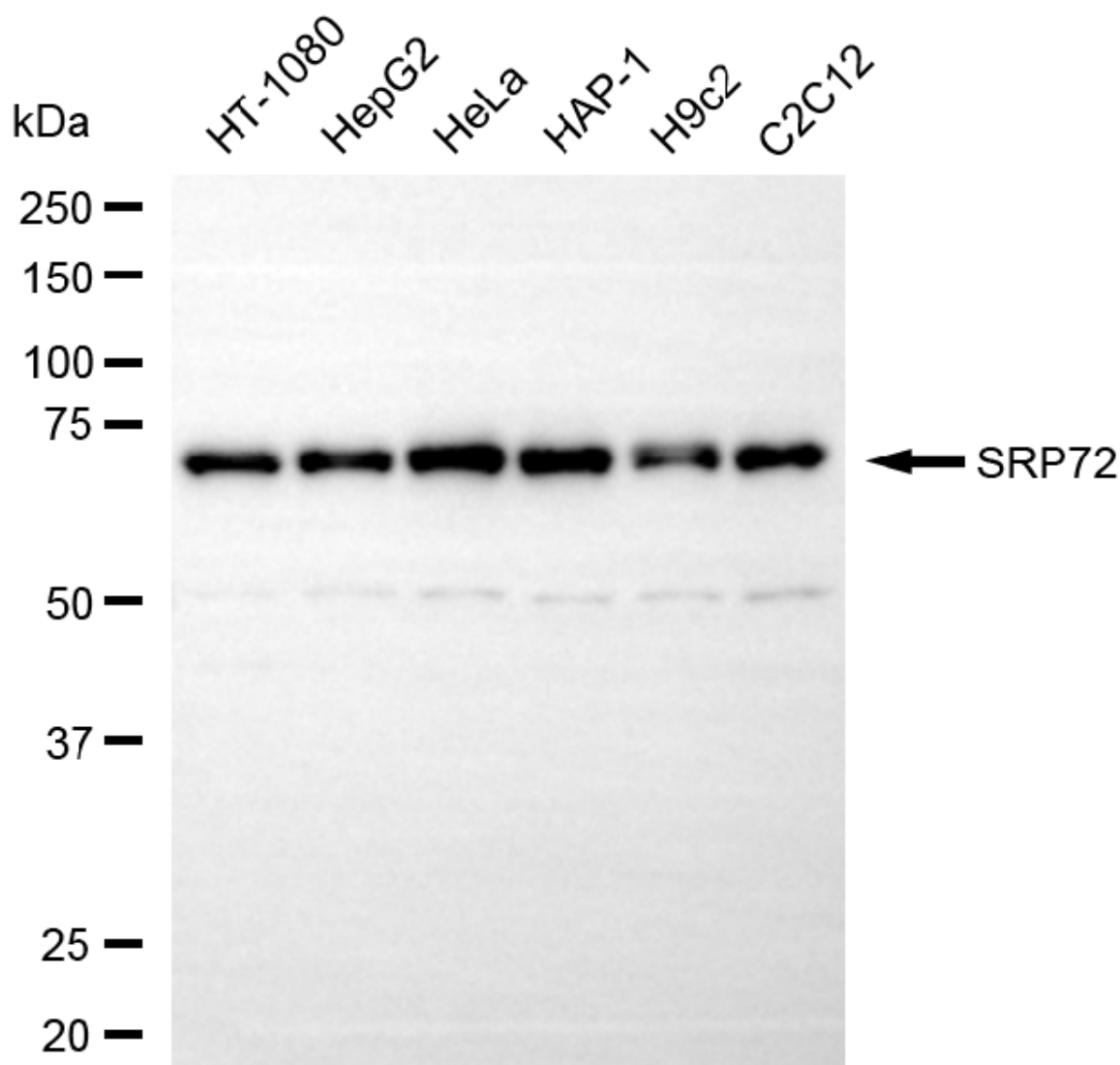
SALES@GENUINBIOTECH.COM  
FAX: +1-540-855-7041

[WWW.GENUINBIOTECH.COM](http://WWW.GENUINBIOTECH.COM)



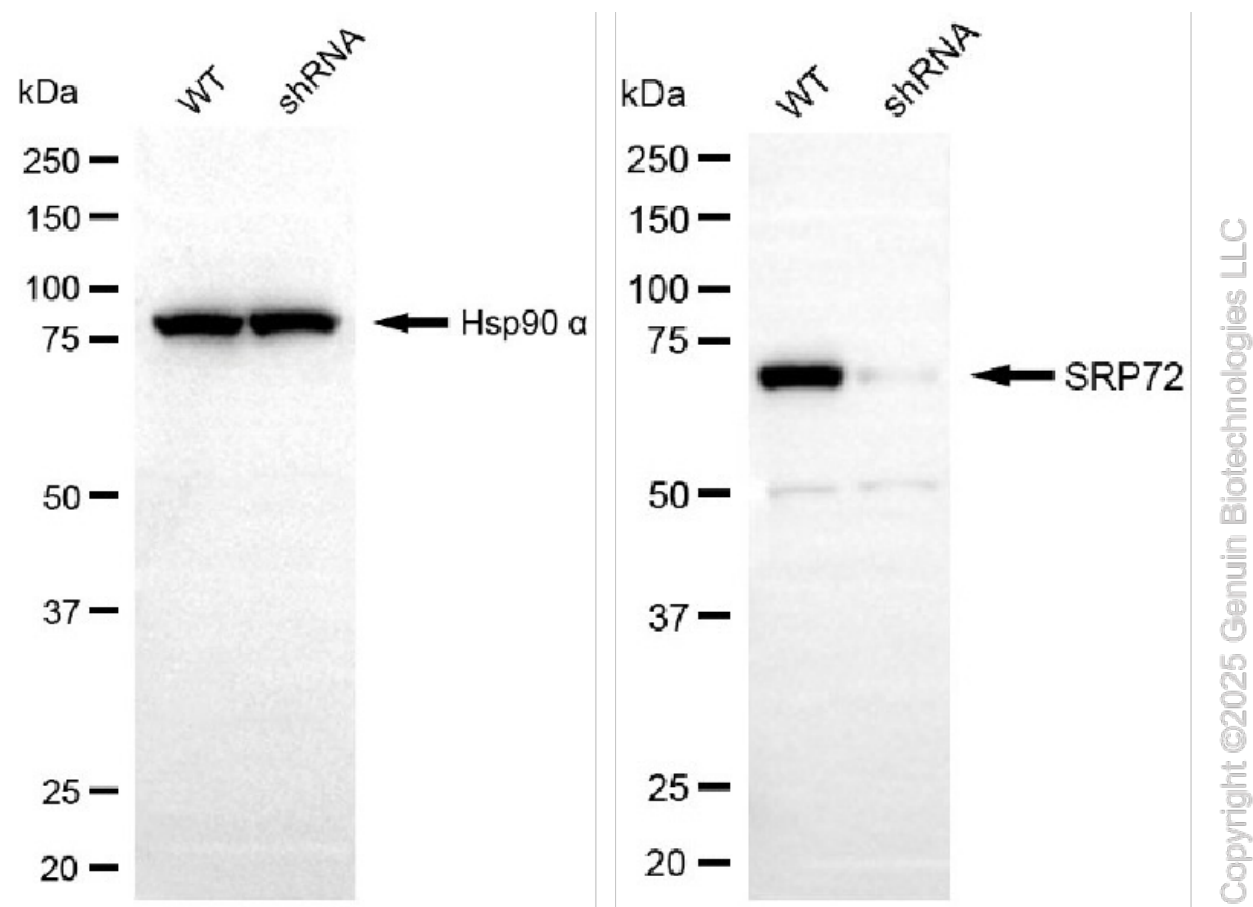
Copyright ©2025 Genuin Biotechnologies LLC

Flow cytometric analysis of SRP72 expression in HepG2 cells using anti-SRP72 antibody (Cat#65606, 1:2,000). Green, isotype control; red, SRP72.



Copyright ©2025 Genuin Biotechnologies LLC

Western blotting analysis using anti-SRP72 antibody (Cat#65606). Total cell lysates (20  $\mu$ g) from various cell lines were loaded and separated by SDS-PAGE. The blot was incubated with anti-SRP72 antibody (Cat#65606, 1:5,000) and HRP-conjugated goat anti-rabbit secondary antibody (Cat#201, 1:20,000) respectively. Image was developed using NaQ™ ECL Substrate Kit (Cat#716).



Western blotting analysis using anti-SRP72 antibody (Cat#65606). SRP72 expression in wild-type (WT) and SRP72 shRNA knockdown (KD) HeLa cells with 20  $\mu$ g of total cell lysates. Hsp90  $\alpha$  serves as a loading control. The blot was incubated with anti-SRP72 antibody (Cat#65606, 1:5,000) and HRP-conjugated goat anti-rabbit secondary antibody (Cat#201, 1:20,000) respectively. Image was developed using NaQ™ ECL Substrate Kit (Cat#716).