

KD-Validated Anti-STK33 Rabbit Monoclonal Antibody



Catalog #: 65607

Aliases

STK33; Serine/Threonine Kinase 33; Serine/Threonine-Protein Kinase 33; EC 2.7.11.1; EC 2.7.11; SPGF93

Background

Gene Name: STK33

NCBI Gene Entry: [65975](#)

UniProt Entry: [Q9BYT3](#)

Application Information

Molecular Weight: Predicted, 58 kDa; observed, 60 kDa

Clonality: Rabbit monoclonal antibody

Clone ID: 25GB4495

Species Reactivity: Human

Applications Tested: Western blotting (WB), flow cytometry (FCM)

Immunogen

Recombinant protein of human STK33

Isotype

Rabbit IgG

Storage Buffer

Supplied in PBS (pH 7.4) containing 50% glycerol, and 0.02% sodium azide.

Storage

Store at -20 °C for one year.

Recommended Dilutions

Western Blotting (WB): 1:1,000-1:5,000

Flow Cytometry (FCM): 1:2,000

Note: This product is for research use only.

Validation Data

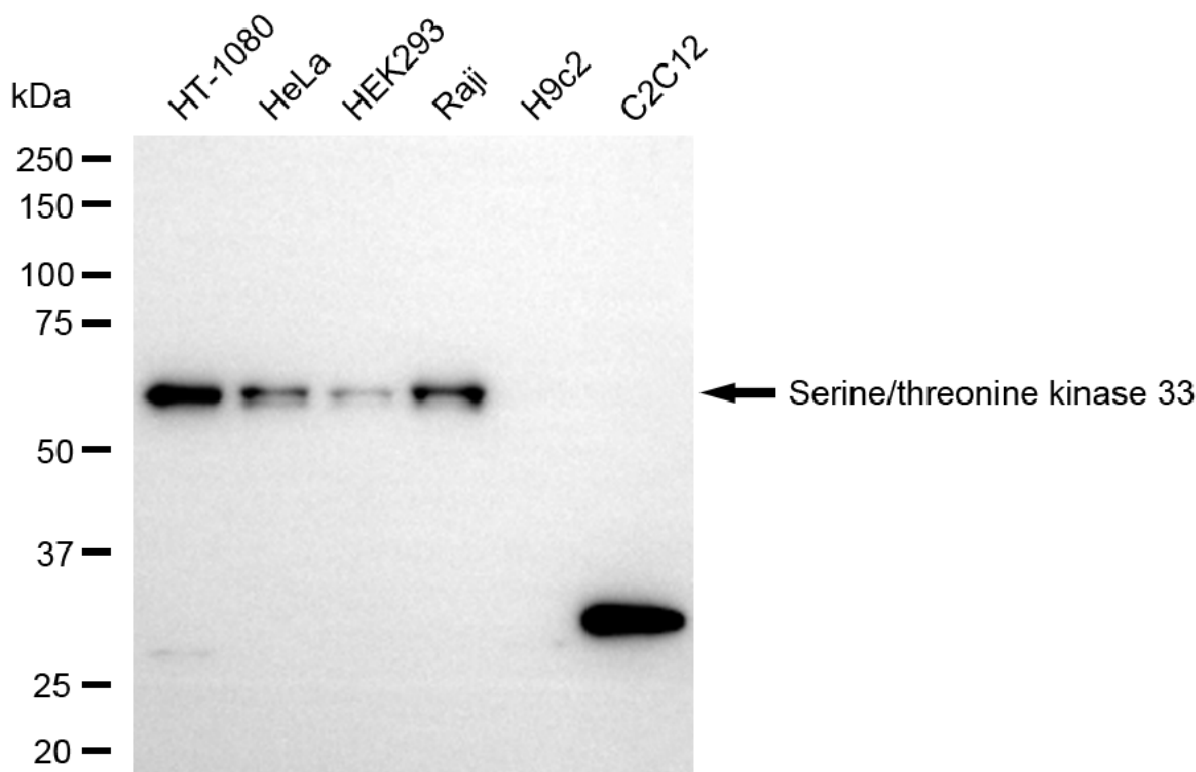
SUPPORT

SUPPORT@GENUINBIOTECH.COM
TEL: +1-540-855-7041

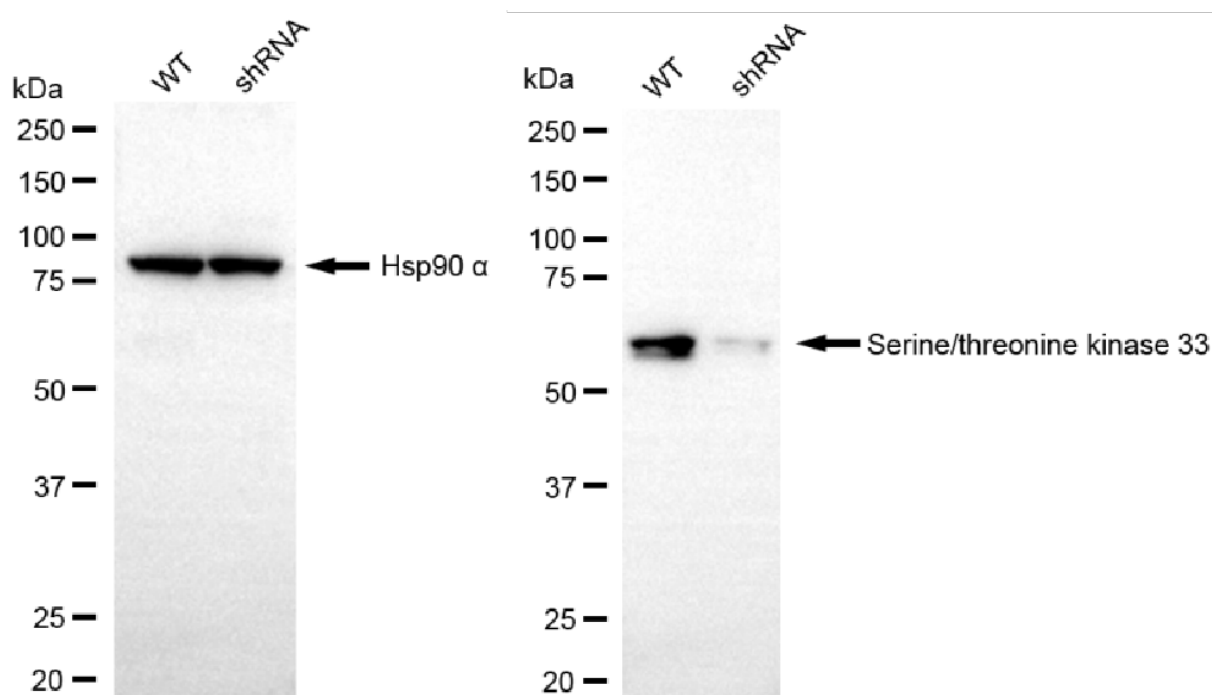
ORDERS

SALES@GENUINBIOTECH.COM
FAX: +1-540-855-7041

WWW.GENUINBIOTECH.COM



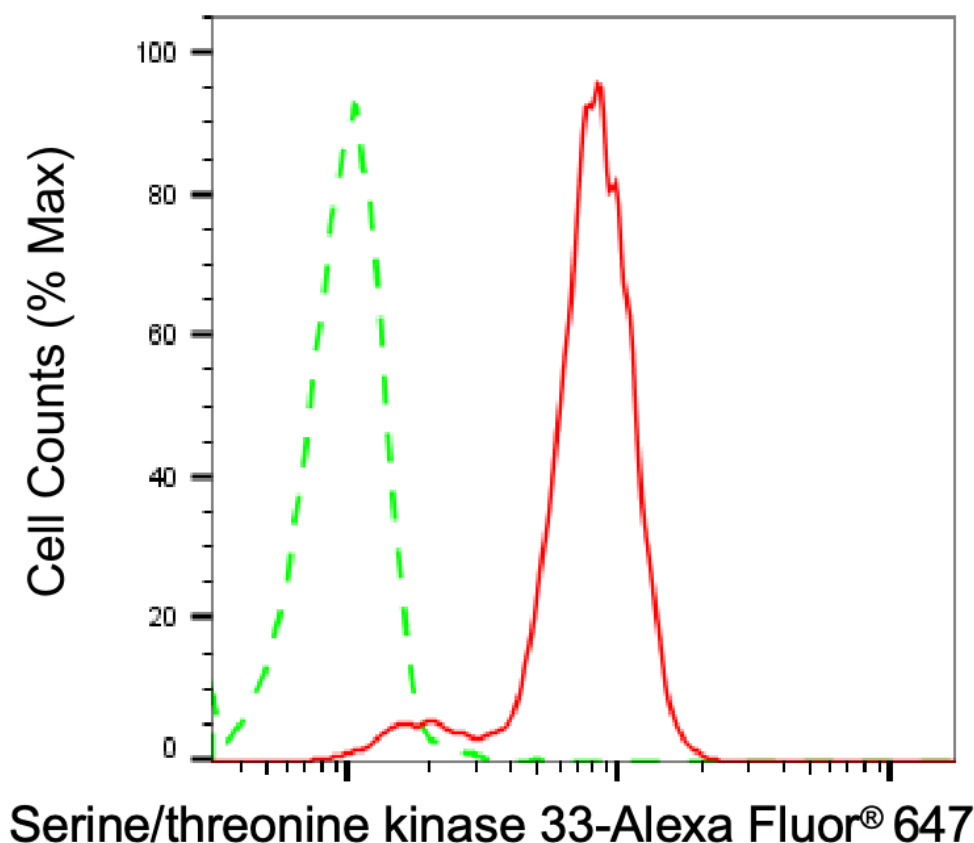
Western blotting analysis using anti-serine/threonine kinase 33 antibody (Cat#65607). Total cell lysates (30 μ g) from various cell lines were loaded and separated by SDS-PAGE. The blot was incubated with anti-serine/threonine kinase 33 antibody (Cat#65607, 1:5,000) and HRP-conjugated goat anti-rabbit secondary antibody (Cat#201, 1:20,000) respectively. Image was developed using NaQ™ ECL Substrate Kit (Cat#716).



KD-Validated Anti-STK33 Rabbit Monoclonal Antibody

PAGE 3

Western blotting analysis using anti-serine/threonine kinase 33 antibody (Cat#65607). Serine/threonine kinase 33 expression in wild-type (WT) and serine/threonine kinase 33 (STK33) shRNA knockdown (KD) HeLa cells with 20 µg of total cell lysates. Hsp90 α serves as a loading control. The blot was incubated with anti-serine/threonine kinase 33 antibody (Cat#65607, 1:5,000) and HRP-conjugated goat anti-rabbit secondary antibody (Cat#201, 1:20,000) respectively. Image was developed using NaQ™ ECL Substrate Kit (Cat#716).



Flow cytometric analysis of Serine/threonine kinase 33 expression in HT-1080 cells using anti-Serine/threonine kinase 33 antibody (Cat#65607, 1:2,000). Green, isotype control; red, Serine/threonine kinase 33.

SUPPORT

SUPPORT@GENUINBIOTECH.COM
TEL: +1-540-855-7041

ORDERS

SALES@GENUINBIOTECH.COM
FAX: +1-540-855-7041

WWW.GENUINBIOTECH.COM