

# KD-Validated Anti-TAF1C Rabbit Monoclonal Antibody



**Catalog #: 65610**

## Aliases

TAF1C; TATA-Box Binding Protein Associated Factor, RNA Polymerase I Subunit C; TAFI110; MGC:39976; TAFI95; SL1; TATA Box Binding Protein (TBP)-Associated Factor, RNA Polymerase I, C, 110kDa; TATA Box Binding Protein (TBP)-Associated Factor, RNA Polymerase I, C, 110kD; TATA Box-Binding Protein-Associated Factor RNA Polymerase I Subunit C; RNA Polymerase I-Specific TBP-Associated Factor 110 KDa; Transcription Initiation Factor SL1/TIF-IB Subunit C; TATA Box-Binding Protein-Associated Factor 1C; TBP-Associated Factor 1C; TATA-Box Binding Protein Associated Factor, RNA Polymerase I, C; Transcription Factor SL1; SL1, 110kD Subunit

## Background

Gene Name: TAF1C

NCBI Gene Entry: [9013](#)

UniProt Entry: [Q15572](#)

## Application Information

Molecular Weight: Predicted, 95 kDa; observed, 100 kDa

Clonality: Rabbit monoclonal antibody

Clone ID: 25GB4510

Species Reactivity: Human, rat

Applications Tested: Western blotting (WB), flow cytometry (FCM), immunocytochemistry (IC)

## Immunogen

A synthesized peptide derived from human TAF1C

## Isotype

Rabbit IgG

## Storage Buffer

Supplied in PBS (pH 7.4) containing 50% glycerol, and 0.02% sodium azide.

## Storage

Store at -20 °C for one year.

## Recommended Dilutions

Western Blotting (WB): 1:1,000-1:5,000

---

### SUPPORT

SUPPORT@GENUINBIOTECH.COM  
TEL: +1-540-855-7041

### ORDERS

SALES@GENUINBIOTECH.COM  
FAX: +1-540-855-7041

[WWW.GENUINBIOTECH.COM](http://WWW.GENUINBIOTECH.COM)

## KD-Validated Anti-TAF1C Rabbit Monoclonal Antibody

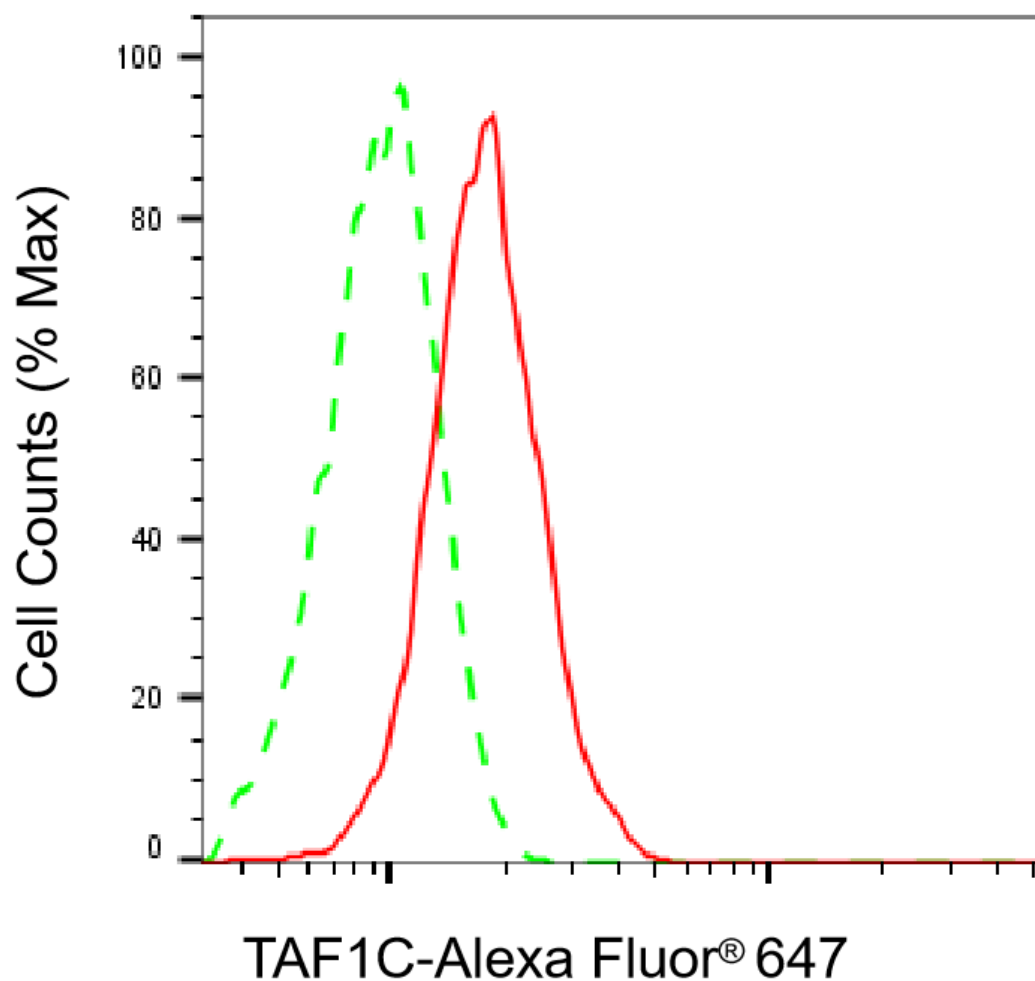
PAGE 2

Flow Cytometry (FCM): 1:2,000

Immunocytochemistry (IC): 1:100-1:1,000

**Note:** This product is for research use only.

### Validation Data



Copyright ©2025 Genuin Biotechnologies LLC

Flow cytometric analysis of TAF1C expression in HepG2 cells using anti-TAF1C antibody (Cat#65610, 1:2,000). Green, isotype control; red, TAF1C.

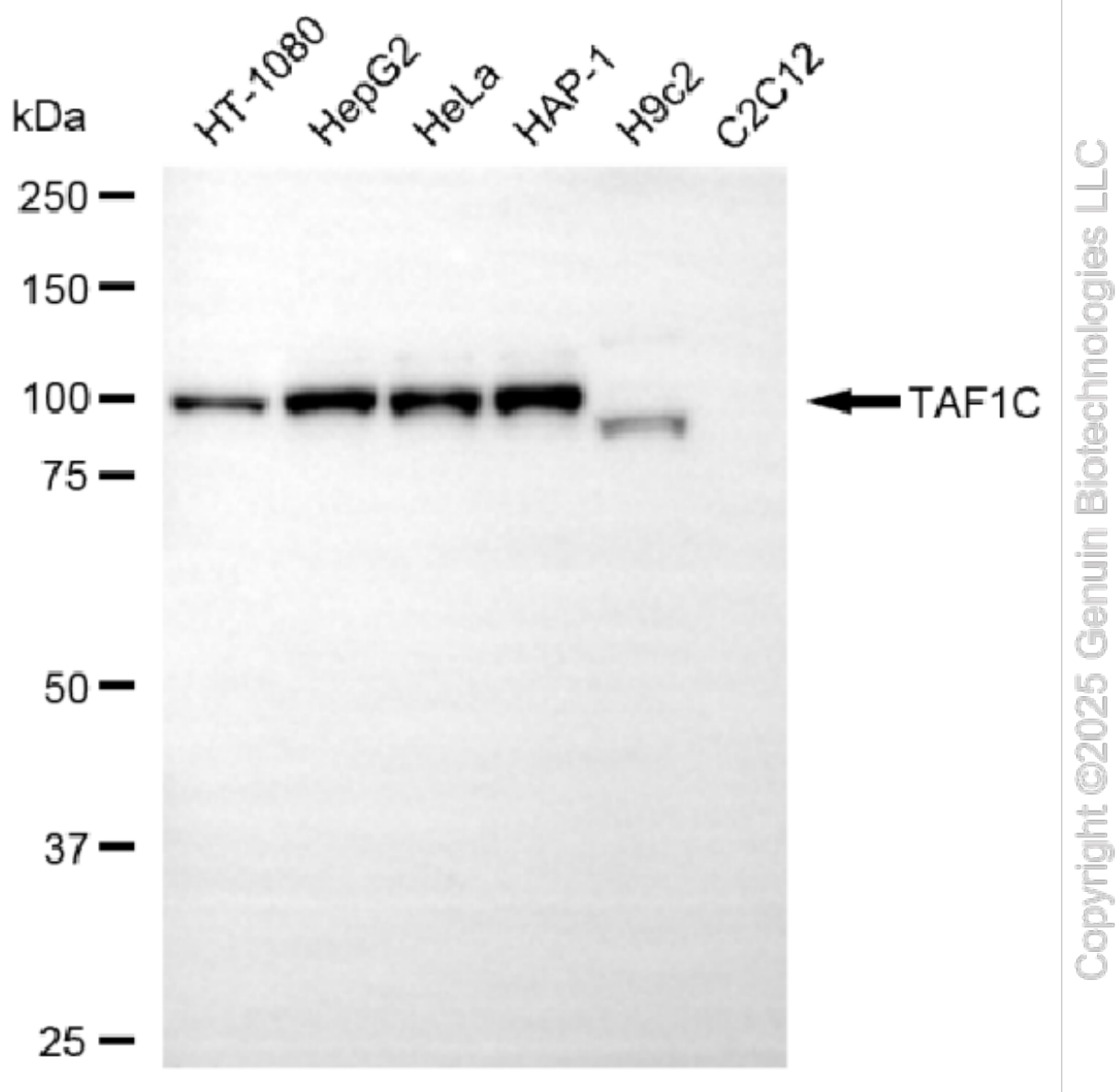
#### SUPPORT

SUPPORT@GENUINBIOTECH.COM  
TEL: +1-540-855-7041

#### ORDERS

SALES@GENUINBIOTECH.COM  
FAX: +1-540-855-7041

[WWW.GENUINBIOTECH.COM](http://WWW.GENUINBIOTECH.COM)



Western blotting analysis using anti-TAF1C antibody (Cat#65610). Total cell lysates (30 µg) from various cell lines were loaded and separated by SDS-PAGE. The blot was incubated with anti-TAF1C antibody (Cat#65610, 1:5,000) and HRP-conjugated goat anti-rabbit secondary antibody (Cat#201, 1:20,000) respectively. Image was developed using FeQ™ ECL Substrate Kit (Cat#226).

