

# KD-Validated Anti-TXNDC9 Rabbit Monoclonal Antibody



**Catalog #: 65622**

## Aliases

TXNDC9; Thioredoxin Domain Containing 9; APACD; Thioredoxin Domain-Containing Protein 9; Protein 1-4; ATP Binding Protein Associated With Cell Differentiation; ATP-Binding Protein Associated With Cell Differentiation; PHLP3

## Background

Gene Name: TXNDC9

NCBI Gene Entry: [10190](#)

UniProt Entry: [O14530](#)

## Application Information

Molecular Weight: Predicted, 27 kDa; observed, 27 kDa

Clonality: Rabbit monoclonal antibody

Clone ID: 25GB4565

Species Reactivity: Human, mouse, rat

Applications Tested: Western blotting (WB), immunocytochemistry (IC), flow cytometry (FCM)

## Immunogen

A synthesized peptide derived from human TXNDC9

## Isotype

Rabbit IgG

## Storage Buffer

Supplied in PBS (pH 7.4) containing 50% glycerol, and 0.02% sodium azide.

## Storage

Store at -20 °C for one year.

## Recommended Dilutions

Western Blotting (WB): 1:1,000-1:5,000

Flow Cytometry (FCM): 1:2,000

Immunocytochemistry (IC): 1:100-1:1,000

**Note:** This product is for research use only.

---

### SUPPORT

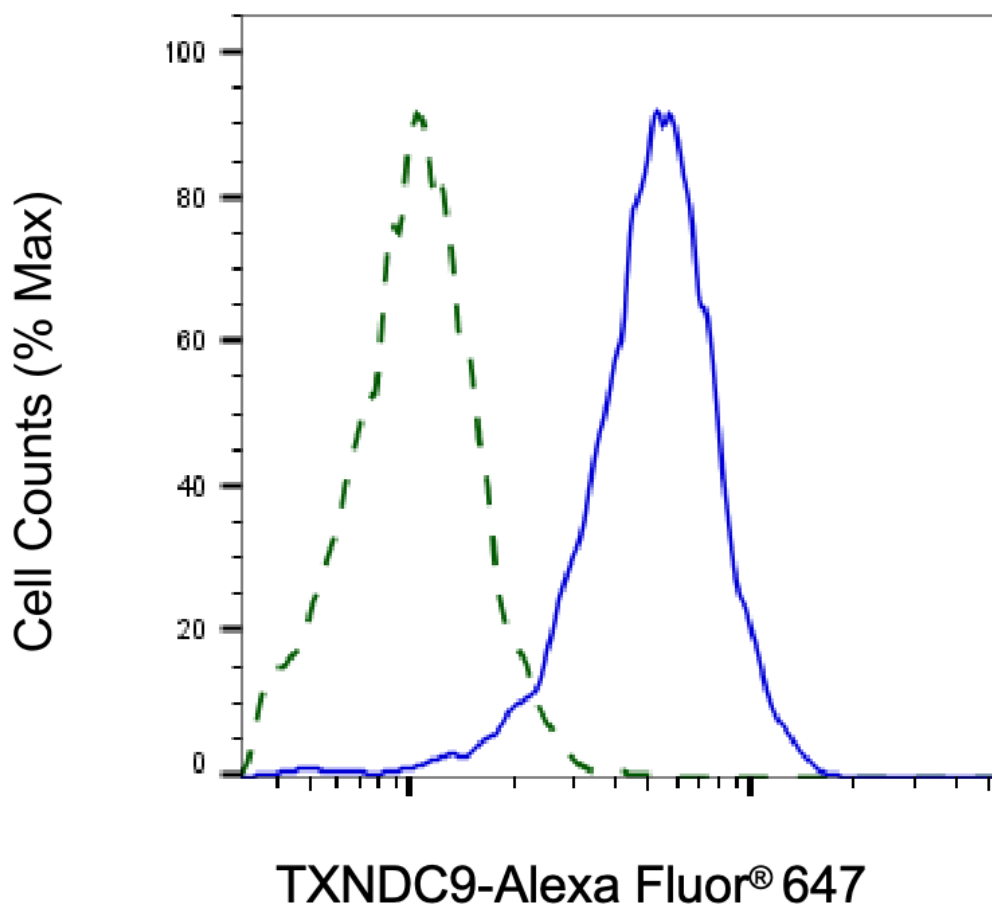
SUPPORT@GENUINBIOTECH.COM  
TEL: +1-540-855-7041

### ORDERS

SALES@GENUINBIOTECH.COM  
FAX: +1-540-855-7041

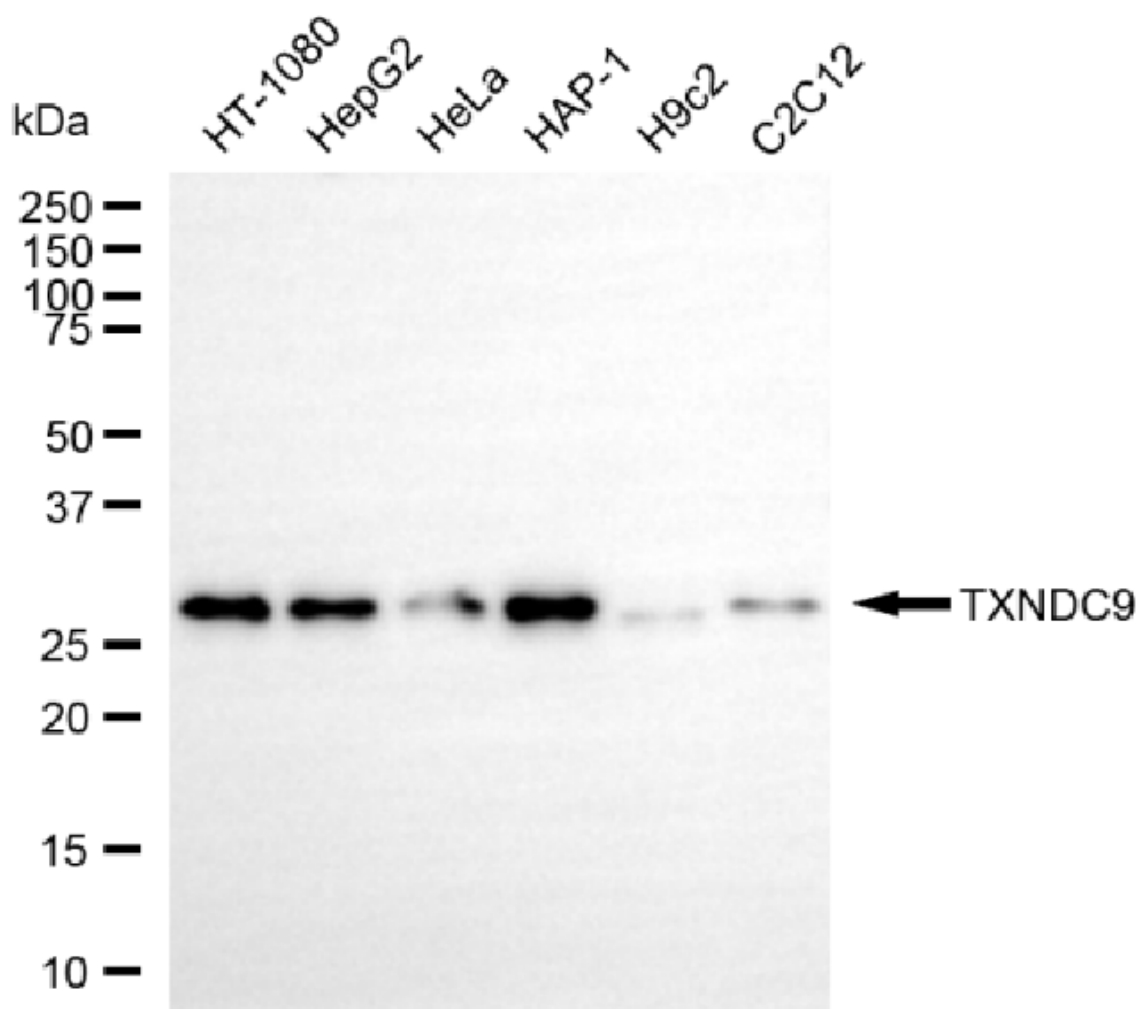
[WWW.GENUINBIOTECH.COM](http://WWW.GENUINBIOTECH.COM)

**Validation Data**



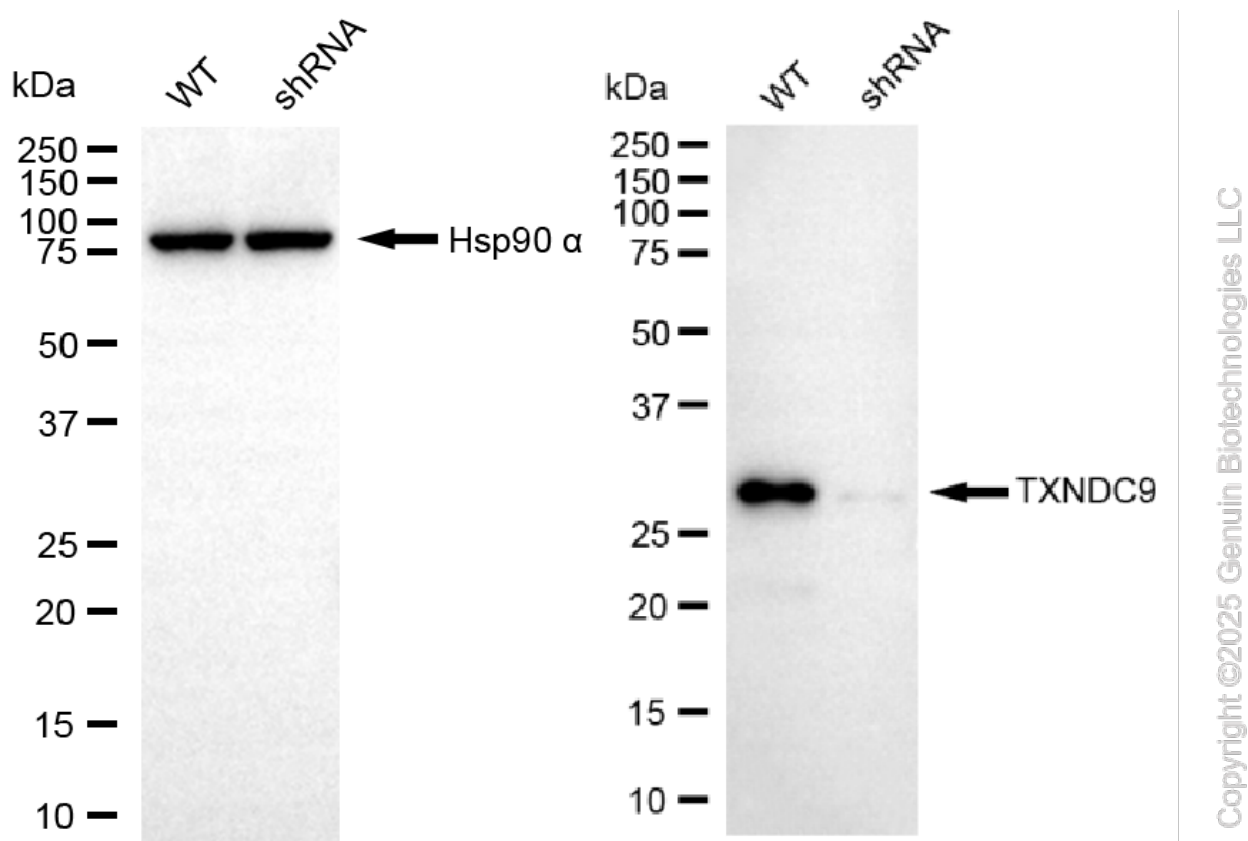
Copyright ©2025 Genuin Biotechnologies LLC

Validation of TXNDC9 knockdown using flow cytometry. Wild-type(WT, Blue) and knockdown(KD, Green) HeLa cells were stained with anti-TXNDC9 antibody (Cat#65622, 1:2,000) and analyzed using BD flow cytometer.

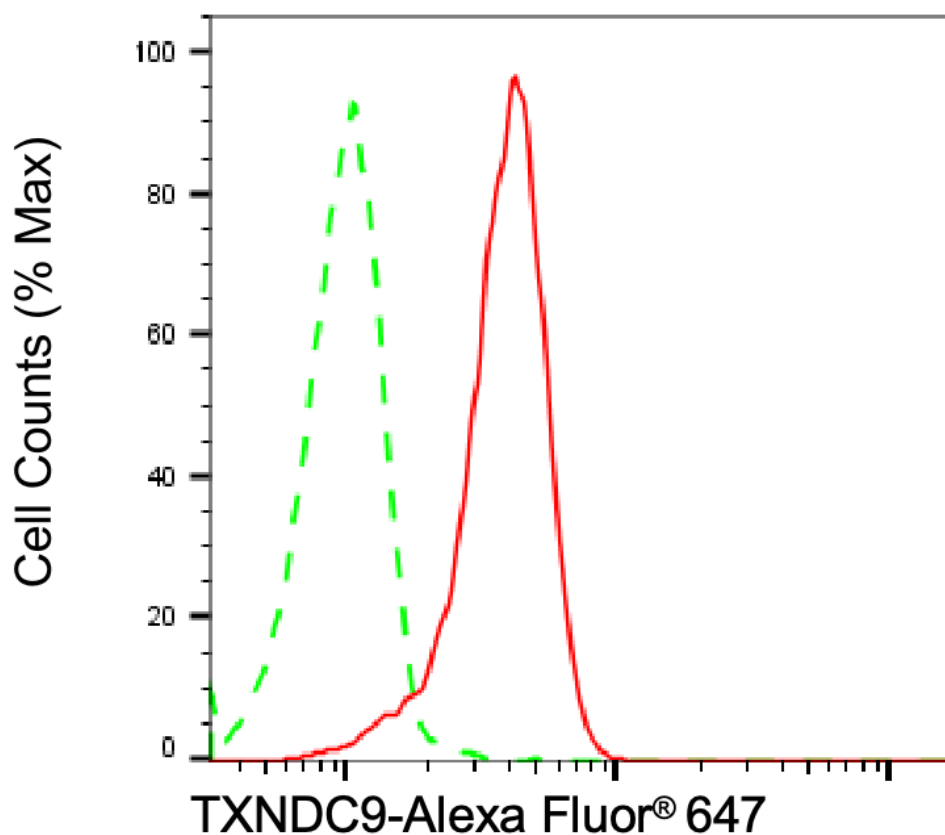


Copyright ©2025 Genuin Biotechnologies LLC

Western blotting analysis using anti-TXNDC9 antibody (Cat#65622). Total cell lysates (30 µg) from various cell lines were loaded and separated by SDS-PAGE. The blot was incubated with anti-TXNDC9 antibody (Cat#65622, 1:5,000) and HRP-conjugated goat anti-rabbit secondary antibody (Cat#201, 1:20,000) respectively. Image was developed using NaQ™ ECL Substrate Kit (Cat#716).

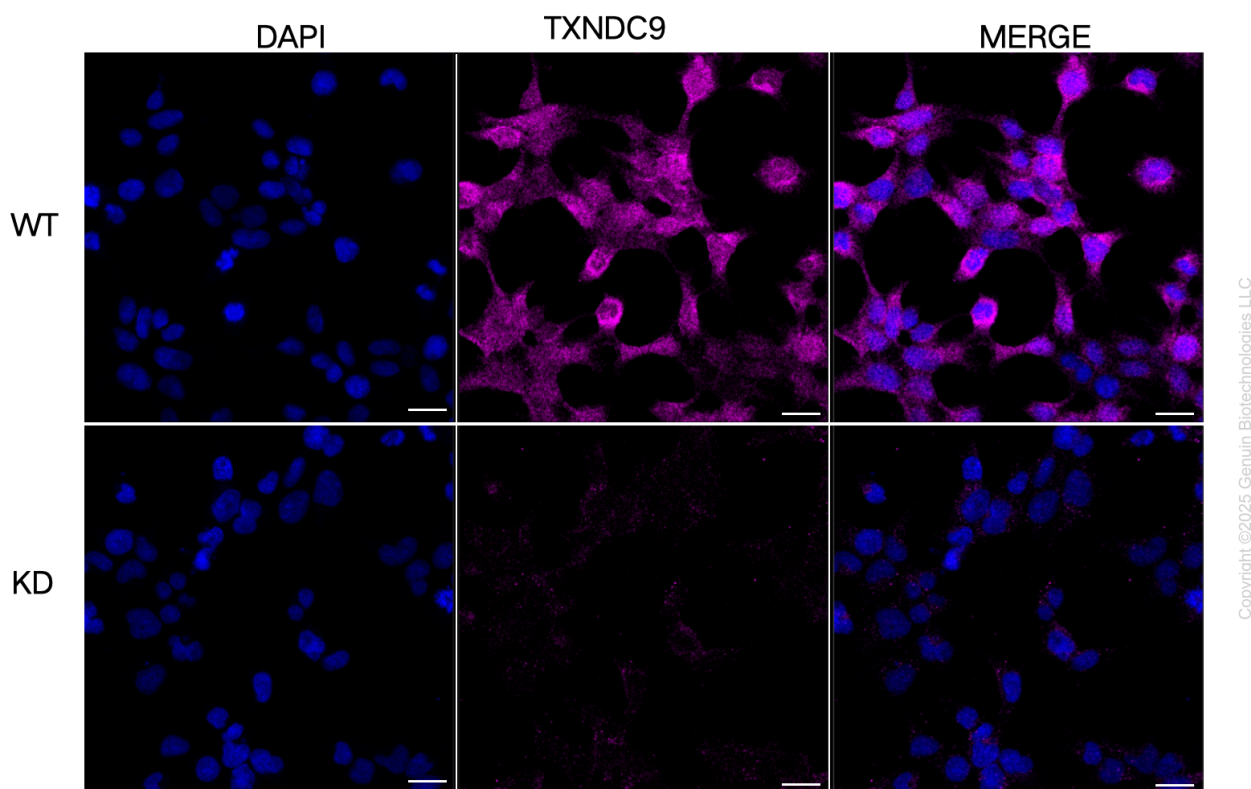


Western blotting analysis using anti-TXNDC9 antibody (Cat#65622). TXNDC9 expression in wild-type (WT) and TXNDC9 shRNA knockdown (KD) HeLa cells with 20 µg of total cell lysates. Hsp90 α serves as a loading control. The blot was incubated with anti-TXNDC9 antibody (Cat#65622, 1:5,000) and HRP-conjugated goat anti-rabbit secondary antibody (Cat#201, 1:20,000) respectively. Image was developed using FeQ™ ECL Substrate Kit (Cat#226).



Copyright ©2025 Genuin Biotechnologies LLC

Flow cytometric analysis of TXNDC9 expression in HT-1080 cells using anti-TXNDC9 antibody (Cat#65622, 1:2,000). Green, isotype control; red, TXNDC9.



Immunocytochemical staining of HeLa cells using anti-TXNDC9 antibody (Cat#65622, 1:1,000), Top panel: wild-type (WT); Bottom panel: TXNDC9 shRNA knockdown (KD). Nuclei were stained blue with DAPI; TXNDC9 was stained magenta with Alexa Fluor® 647. Scale bar, 20  $\mu$ m.