

KD-Validated Anti-SNRPC Rabbit Monoclonal Antibody



Catalog #: 65623

Aliases

SNRPC; Small Nuclear Ribonucleoprotein Polypeptide C; U1-C; Yhc1; U1 Small Nuclear Ribonucleoprotein C; U1 SnRNP C; U1C; U1 Small Nuclear RNP Specific C; U1 SnRNP Protein C

Background

Gene Name: SNRPC

NCBI Gene Entry: [6631](#)

UniProt Entry: [P09234](#)

Application Information

Molecular Weight: Predicted, 17 kDa; observed, 19 kDa

Clonality: Rabbit monoclonal antibody

Clone ID: 25GB4570

Species Reactivity: Human, mouse, rat

Applications Tested: Western blotting (WB), flow cytometry (FCM)

Immunogen

A synthesized peptide derived from human SNRPC

Isotype

Rabbit IgG

Storage Buffer

Supplied in PBS (pH 7.4) containing 50% glycerol, and 0.02% sodium azide.

Storage

Store at -20 °C for one year.

Recommended Dilutions

Western Blotting (WB): 1:1,000-1:5,000

Flow Cytometry (FCM): 1:2,000

Note: This product is for research use only.

Validation Data

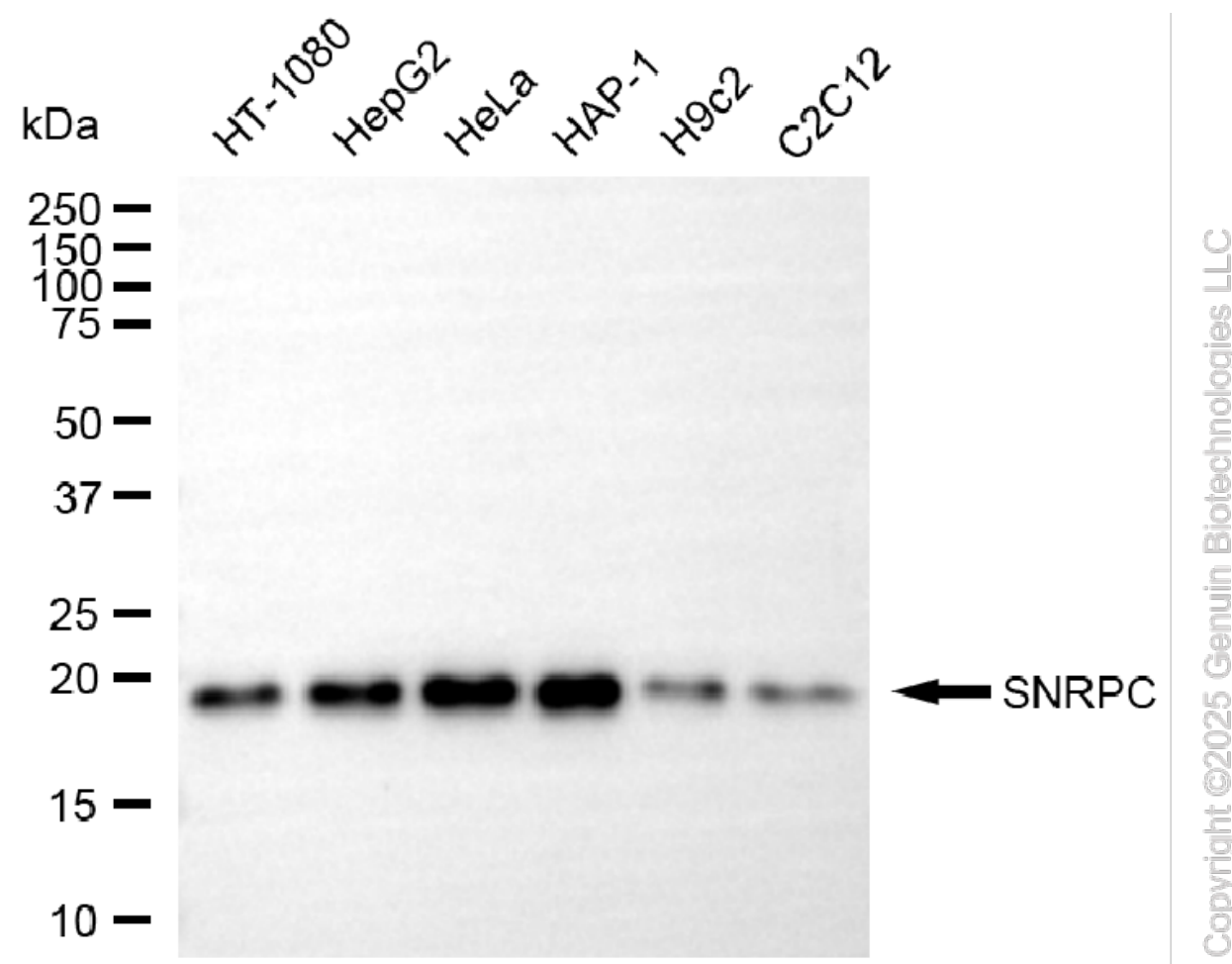
SUPPORT

SUPPORT@GENUINBIOTECH.COM
TEL: +1-540-855-7041

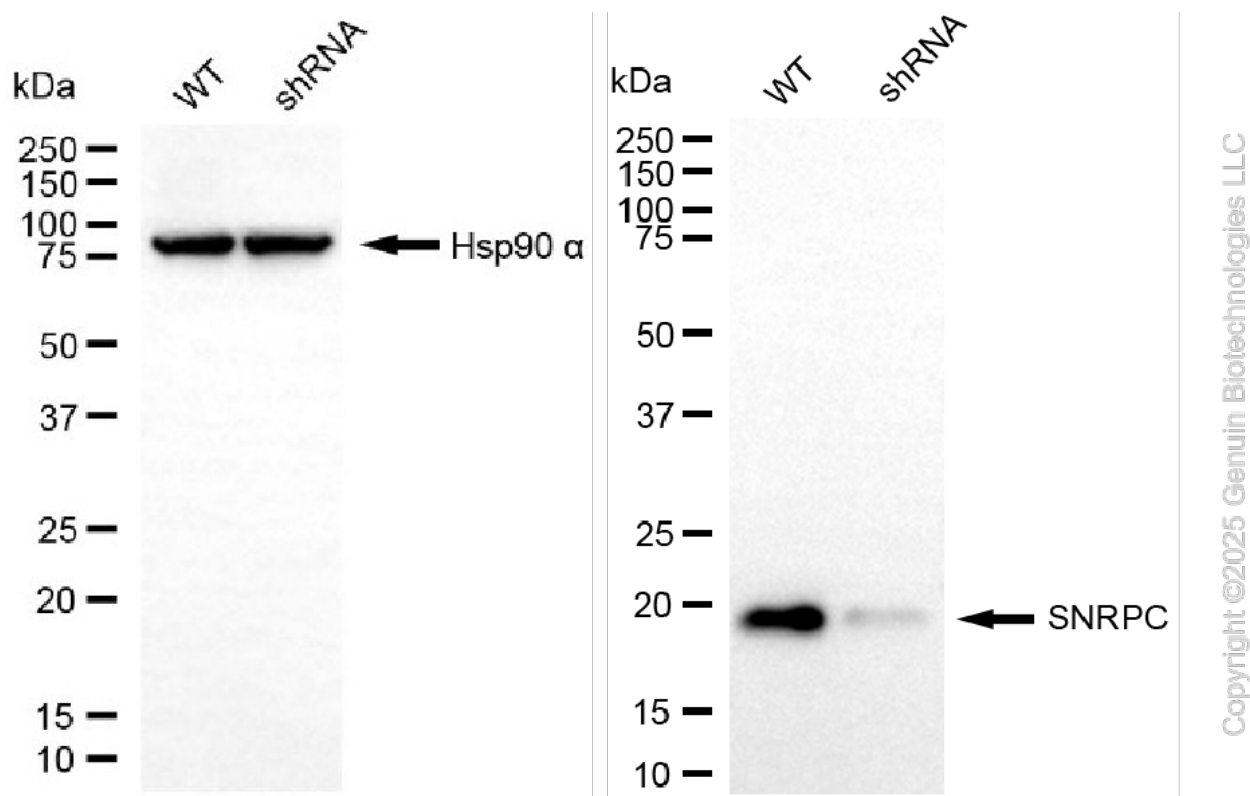
ORDERS

SALES@GENUINBIOTECH.COM
FAX: +1-540-855-7041

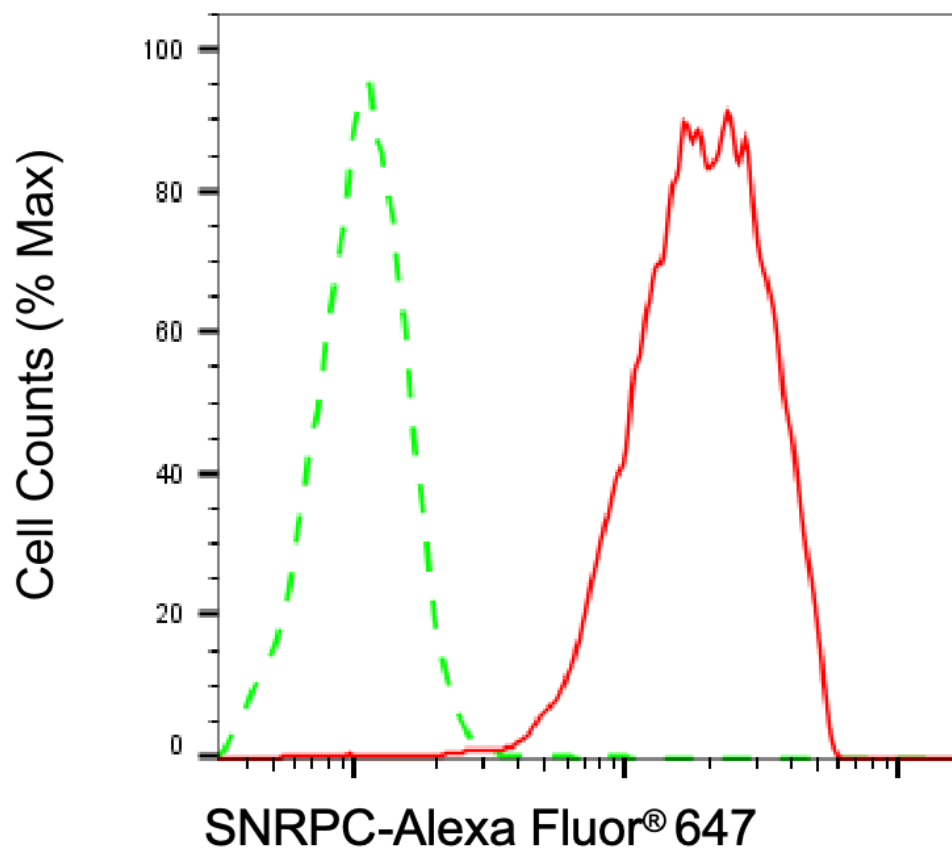
WWW.GENUINBIOTECH.COM



Western blotting analysis using anti-SNRPC antibody (Cat#65623). Total cell lysates (30 μ g) from various cell lines were loaded and separated by SDS-PAGE. The blot was incubated with anti-SNRPC antibody (Cat#65623, 1:5,000) and HRP-conjugated goat anti-rabbit secondary antibody (Cat#201, 1:20,000) respectively. Image was developed using NaQTM ECL Substrate Kit (Cat#716).



Western blotting analysis using anti-SNRPC antibody (Cat#65623). SNRPC expression in wild-type (WT) and SNRPC shRNA knockdown (KD) HeLa cells with 30 µg of total cell lysates. Hsp90 α serves as a loading control. The blot was incubated with anti-SNRPC antibody (Cat#65623, 1:5,000) and HRP-conjugated goat anti-rabbit secondary antibody (Cat#201, 1:20,000) respectively. Image was developed using NaQ™ ECL Substrate Kit (Cat#716).



Copyright ©2025 Genuin Biotechnologies LLC

Flow cytometric analysis of SNRPC expression in HAP-1 cells using anti-SNRPC antibody (Cat#65623, 1:2,000). Green, isotype control; red, SNRPC.