

KD-Validated Anti-UCHL5 Rabbit Monoclonal Antibody



Catalog #: 65625

Aliases

UCHL5; Ubiquitin C-Terminal Hydrolase L5; UCH37; CGI-70; INO80R; Ubiquitin Carboxyl-Terminal Hydrolase Isozyme L5; Ubiquitin Carboxyl-Terminal Hydrolase L5; Ubiquitin C-Terminal Hydrolase UCH37; Ubiquitin Thioesterase L5; INO80 Complex Subunit R; EC 3.4.19.12; UCH-L5; Ubiquitin Carboxyl-Terminal Esterase L5

Background

Gene Name: UCHL5

NCBI Gene Entry: [51377](#)

UniProt Entry: [Q9Y5K5](#)

Application Information

Molecular Weight: Predicted, 38 kDa; observed, 33,38 kDa

Clonality: Rabbit monoclonal antibody

Clone ID: 25GB4580

Species Reactivity: Human, mouse, rat

Applications Tested: Western blotting (WB), flow cytometry (FCM), immunocytochemistry (IC)

Immunogen

A synthesized peptide derived from human UCHL5

Isotype

Rabbit IgG

Storage Buffer

Supplied in PBS (pH 7.4) containing 50% glycerol, and 0.02% sodium azide.

Storage

Store at -20 °C for one year.

Recommended Dilutions

Western Blotting (WB): 1:1,000-1:5,000

Flow Cytometry (FCM): 1:2,000

Immunocytochemistry (IC): 1:100-1:1,000

SUPPORT

SUPPORT@GENUINBIOTECH.COM
TEL: +1-540-855-7041

ORDERS

SALES@GENUINBIOTECH.COM
FAX: +1-540-855-7041

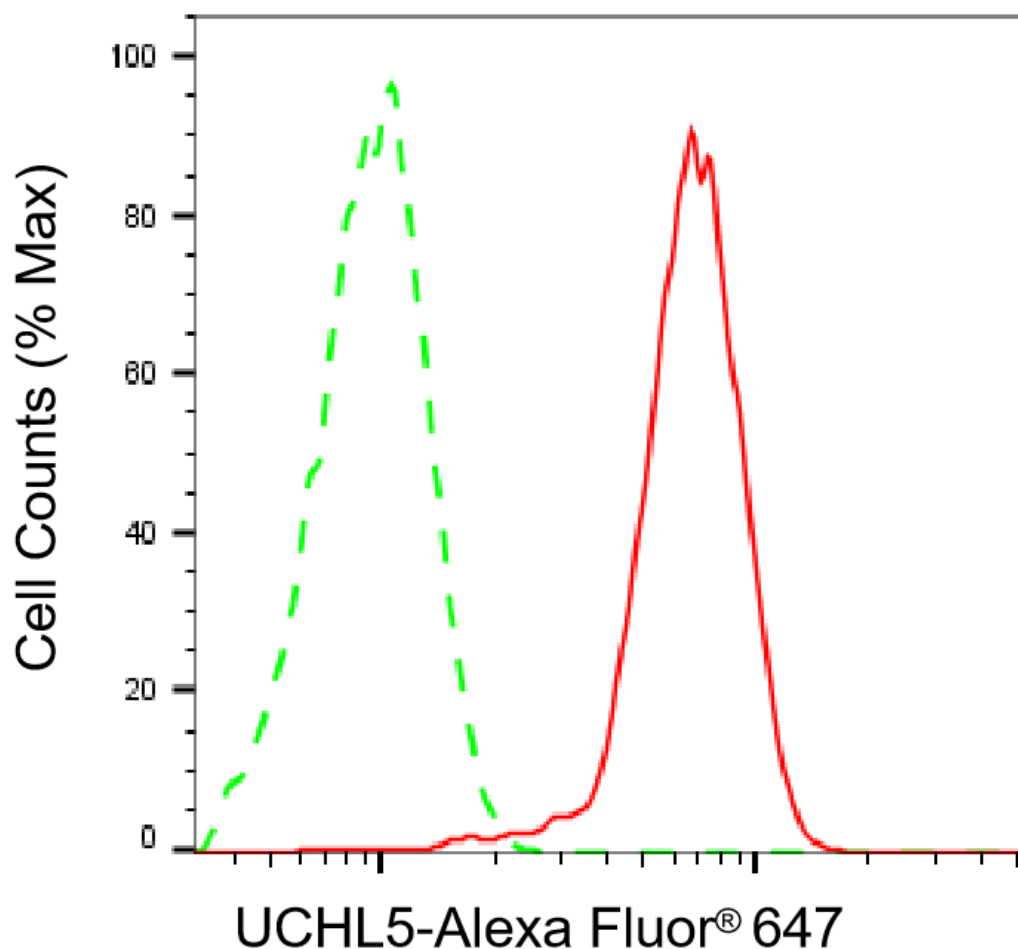
WWW.GENUINBIOTECH.COM

KD-Validated Anti-UCHL5 Rabbit Monoclonal Antibody

PAGE 2

Note: This product is for research use only.

Validation Data



Copyright ©2025 Genuin Biotechnologies LLC

Flow cytometric analysis of UCHL5 expression in HepG2 cells using anti-UCHL5 antibody (Cat#65625, 1:2,000). Green, isotype control; red, UCHL5.

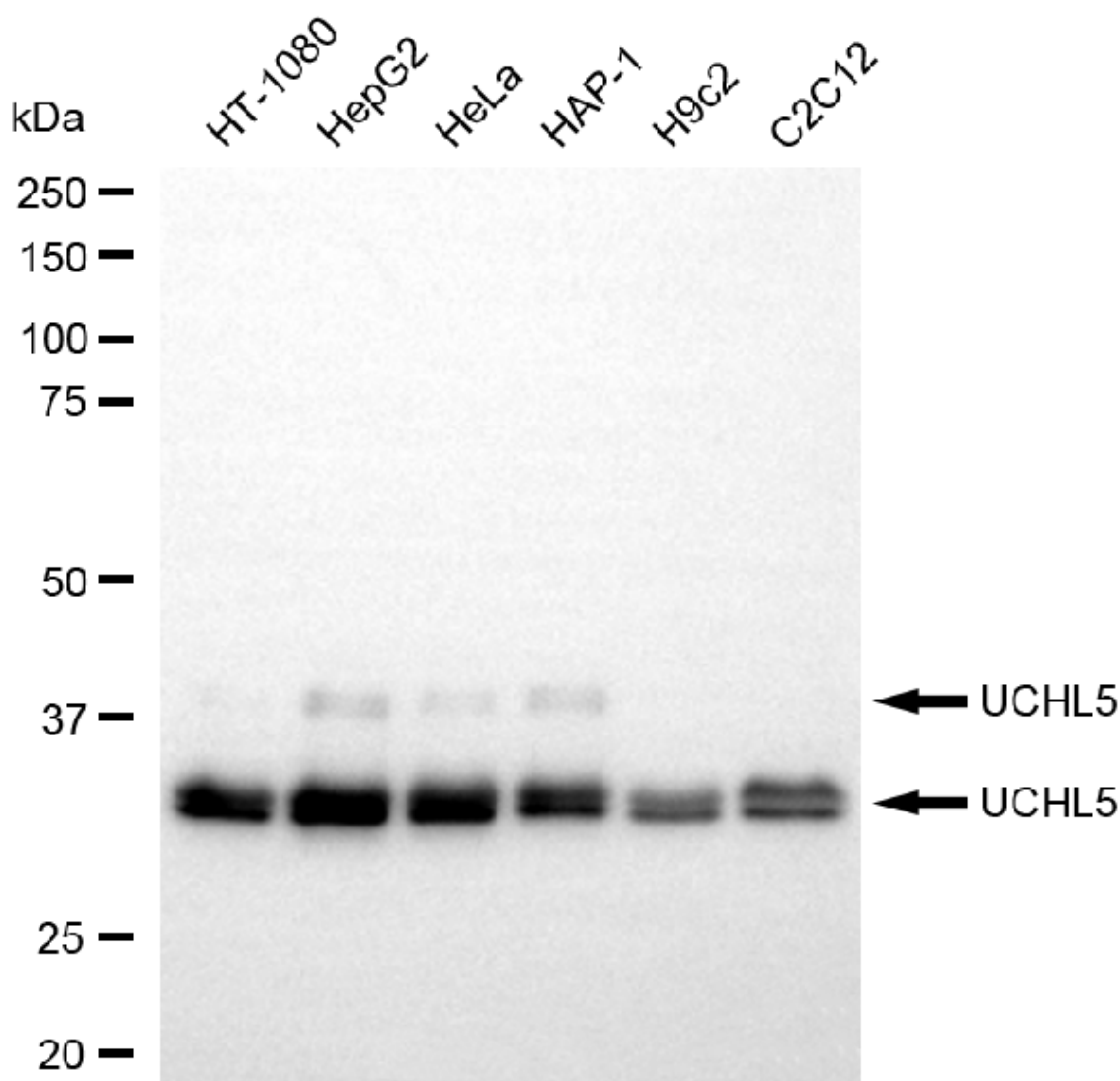
SUPPORT

SUPPORT@GENUINBIOTECH.COM
TEL: +1-540-855-7041

ORDERS

SALES@GENUINBIOTECH.COM
FAX: +1-540-855-7041

WWW.GENUINBIOTECH.COM



Copyright ©2025 Genuin Biotechnologies LLC

Western blotting analysis using anti-UCHL5 antibody (Cat#65625). Total cell lysates (30 µg) from various cell lines were loaded and separated by SDS-PAGE. The blot was incubated with anti-UCHL5 antibody (Cat#65625, 1:5,000) and HRP-conjugated goat anti-rabbit secondary antibody (Cat#201, 1:20,000) respectively. Image was developed using NaQ™ ECL Substrate Kit (Cat#716).

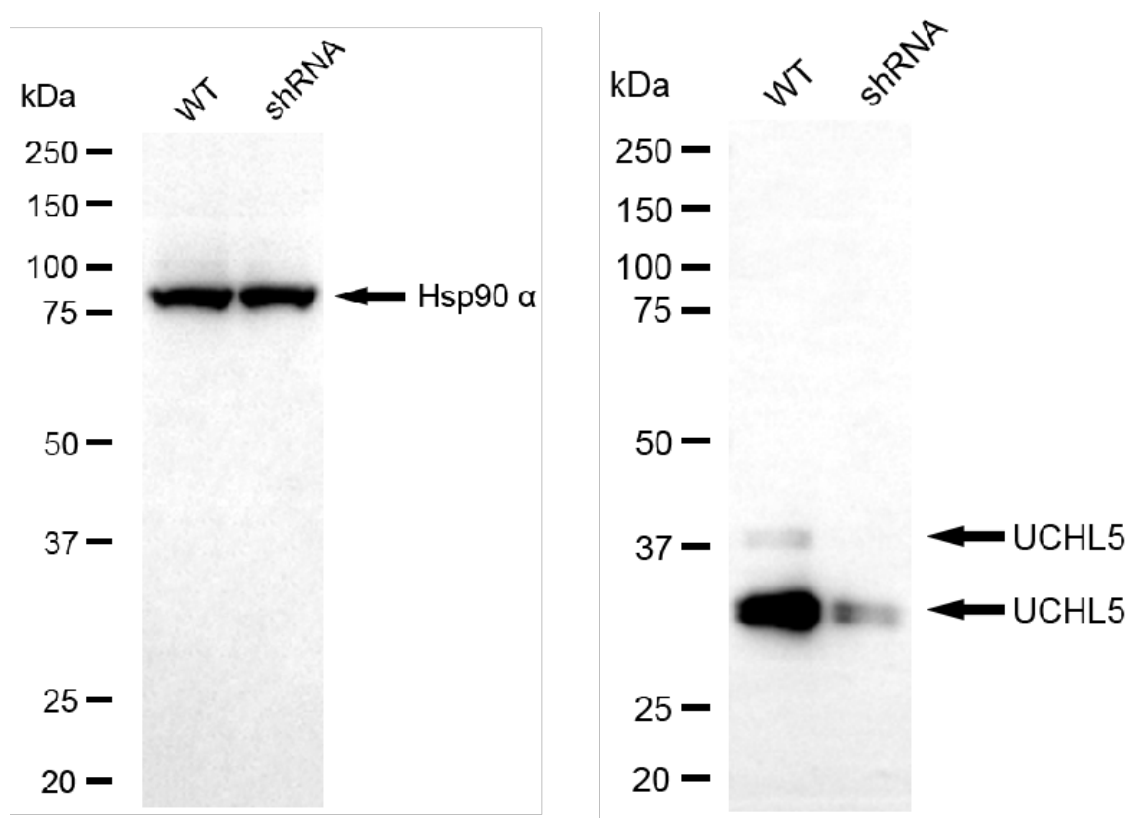
SUPPORT

SUPPORT@GENUINBIOTECH.COM
TEL: +1-540-855-7041

ORDERS

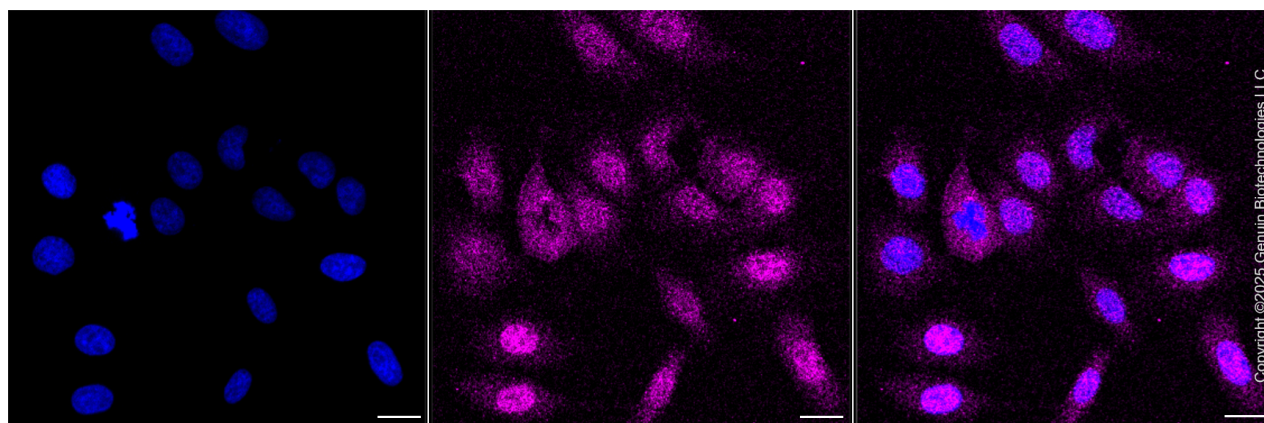
SALES@GENUINBIOTECH.COM
FAX: +1-540-855-7041

WWW.GENUINBIOTECH.COM



Copyright ©2025 Genuin Biotechnologies LLC

Western blotting analysis using anti-UCHL5 antibody (Cat#65625). UCHL5 expression in wild type (WT) and UCHL5 shRNA knockout (KD) HeLa cells with 20 µg of total cell lysates. Hsp90 α serves as a loading control. The blot was incubated with anti-UCHL5 antibody (Cat#65625, 1:5,000) and HRP-conjugated goat anti-rabbit secondary antibody (Cat#201, 1:20,000) respectively. Image was developed using NaQ™ ECL Substrate Kit (Cat#716).



Copyright ©2025 Genuin Biotechnologies LLC

Immunocytochemical staining of HepG2 cells with anti-UCHL5 antibody (Cat#65625, 1:1,000). Nuclei were stained blue with DAPI; UCHL5 was stained magenta with Alexa Fluor® 647. Images were taken using Leica stellaris 5. Protein abundance based on laser Intensity and smart gain: Medium. Scale bar, 20 µm.

SUPPORT

SUPPORT@GENUINBIOTECH.COM
TEL: +1-540-855-7041

ORDERS

SALES@GENUINBIOTECH.COM
FAX: +1-540-855-7041

WWW.GENUINBIOTECH.COM