

KD-Validated Anti-PKC alpha Recombinant Rabbit Monoclonal Antibody



Catalog #: 65641

Aliases

Protein Kinase C; Alpha; EC 2.7.11.13; PKCA1; AAG6; PKC-A; Aging-Associated Gene 6; PKC-alpha; Protein Kinase C Alpha Type; PRKACA; EC 2.7.11

Background

Gene Name: PRKCA

NCBI Gene Entry: [5578](#)

UniProt Entry: [P17252](#)

Application Information

Molecular Weight: Predicted, 77 kDa, observed, 75 kDa

Clonality: Rabbit monoclonal antibody

Clone ID: 23GB1690

Species Reactivity: Human, mouse, rat

Applications Tested: Western blotting (WB), flow cytometry (FCM), immunocytochemistry (IC)

Immunogen

A synthesized peptide derived from human PKC alpha

Isotype

Rabbit IgG

Storage Buffer

Supplied in PBS (pH 7.4) containing 50% glycerol, and 0.02% sodium azide.

Storage

Store at -20 °C for one year.

Recommended Dilutions

Western Blotting (WB): 1:1,000-1:5,000

Flow Cytometry (FCM): 1:2,000

Immunocytochemistry (IC): 1:100-1:1,000

Note: This product is for research use only.

Validation Data

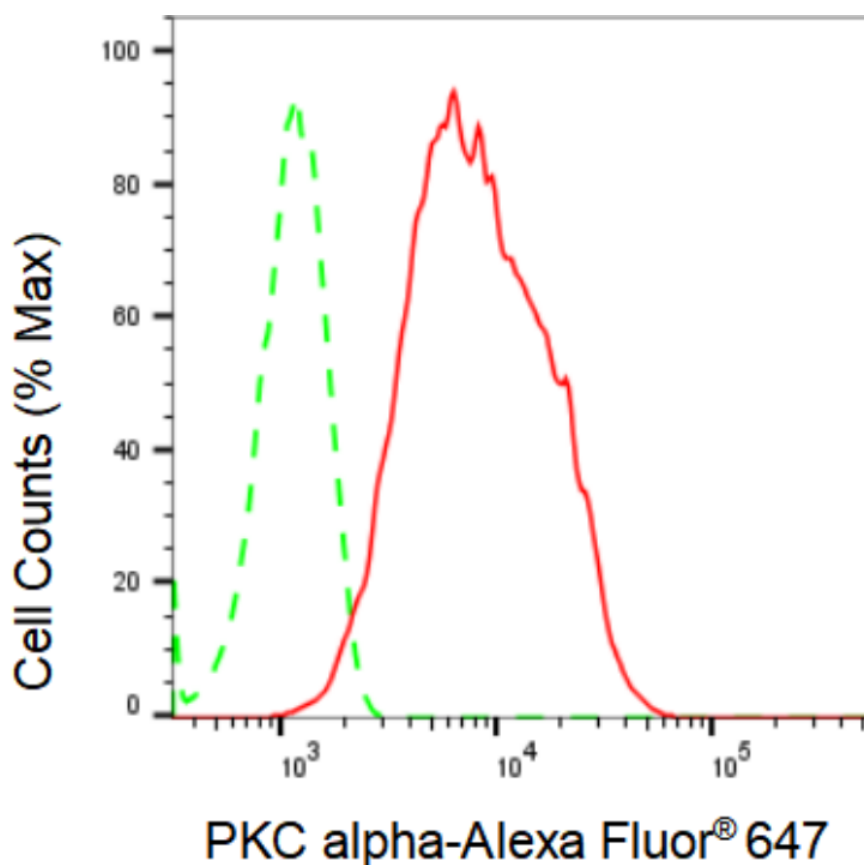
SUPPORT

SUPPORT@GENUINBIOTECH.COM
TEL: +1-540-855-7041

ORDERS

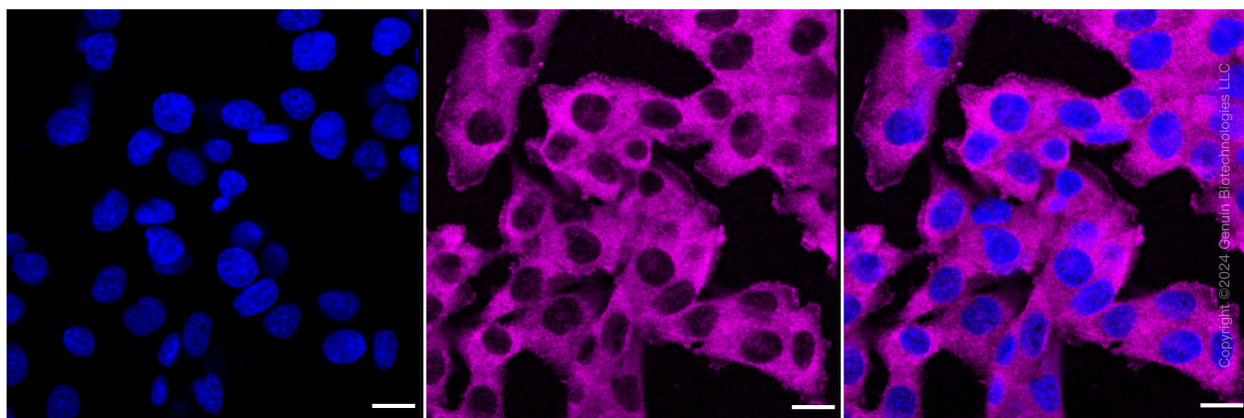
SALES@GENUINBIOTECH.COM
FAX: +1-540-855-7041

WWW.GENUINBIOTECH.COM



Copyright ©2024 Genuin Biotechnologies LLC

Flow cytometric analysis of PKC alpha expression in HepG2 cells using PKC alpha antibody (Cat#65641, 1:2,000). Green, isotype control; red, PKC alpha



Immunocytochemical staining of HT-1080 cells with PKC alpha antibody (Cat#65641, 1:1,000). Nuclei were stained blue with DAPI; PKC alpha was stained magenta with Alexa Fluor® 647. Images were taken using Leica stellaris 5. Protein abundance based on laser Intensity and smart gain: Medium. Scale bar: 20 µm.

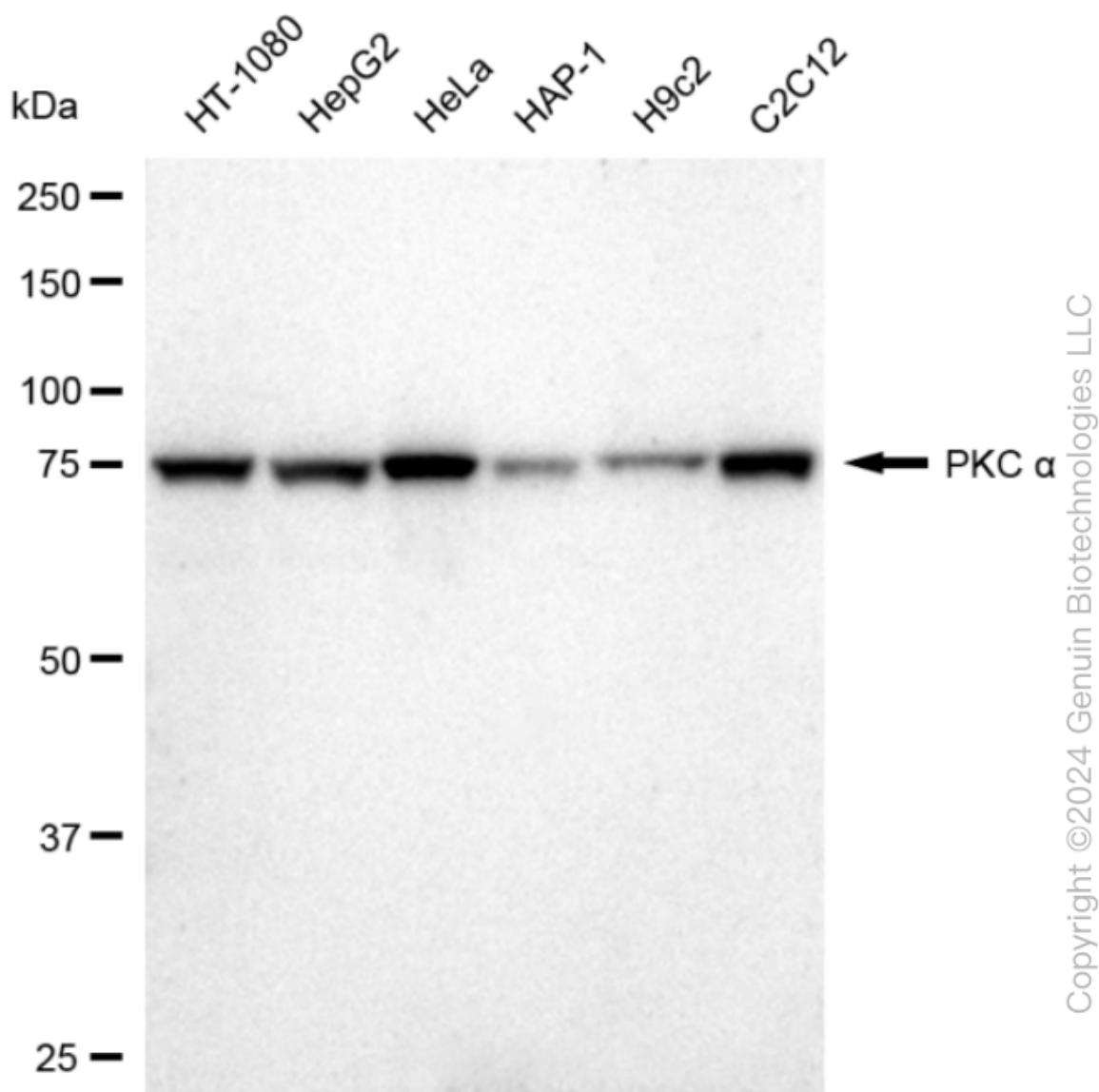
SUPPORT

SUPPORT@GENUINBIOTECH.COM
TEL: +1-540-855-7041

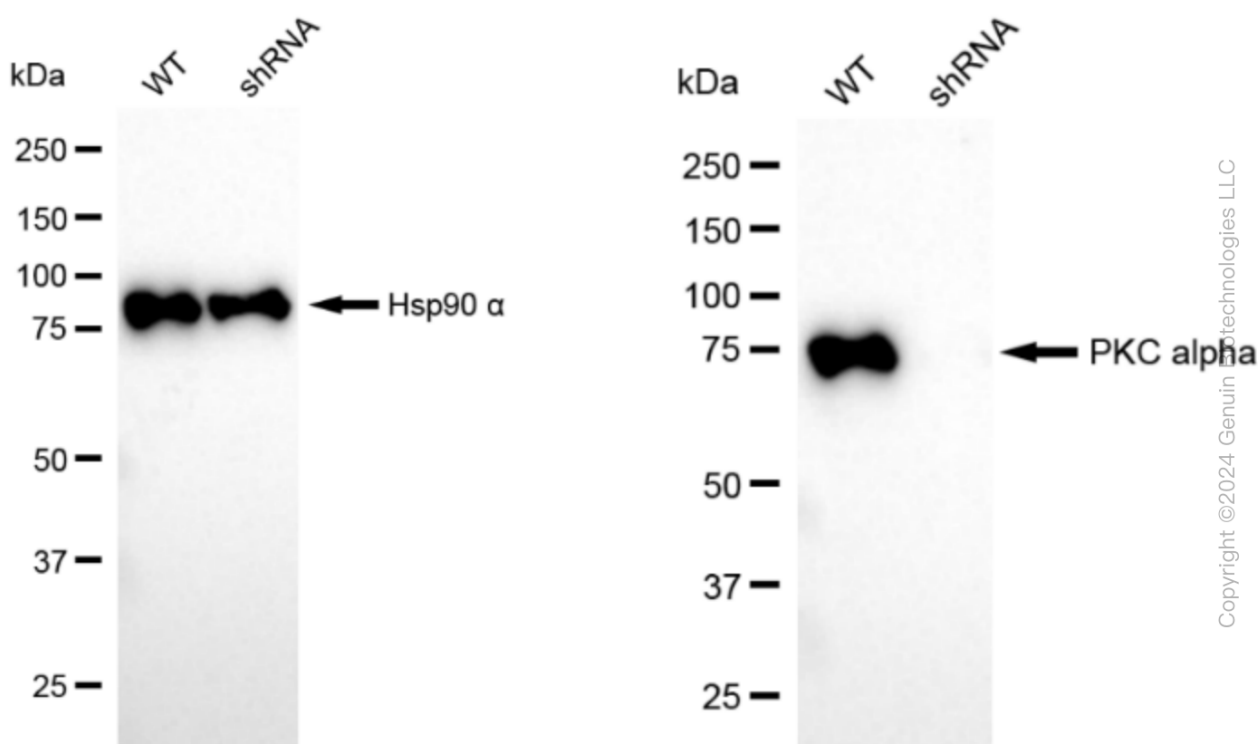
ORDERS

SALES@GENUINBIOTECH.COM
FAX: +1-540-855-7041

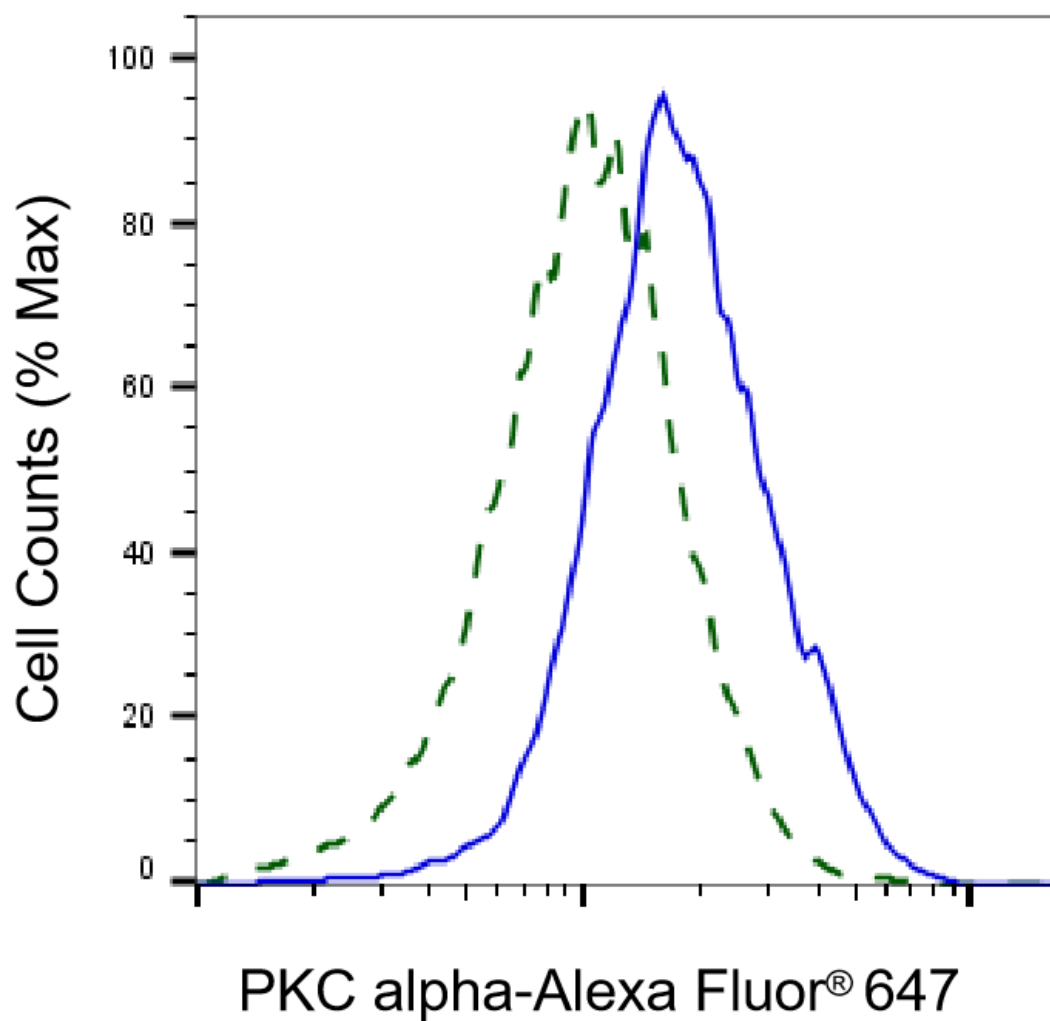
WWW.GENUINBIOTECH.COM



Western blotting analysis using anti-PKC alpha antibody (Cat#65641). Total cell lysates (30 μ g) from various cell lines were loaded and separated by SDS-PAGE. The blot was incubated with anti-PKC alpha antibody (Cat#65641, 1:5,000) and HRP-conjugated goat anti-rabbit secondary antibody (Cat#201, 1:20,000) respectively. Image was developed using FeQ™ ECL Substrate Kit (Cat#226).

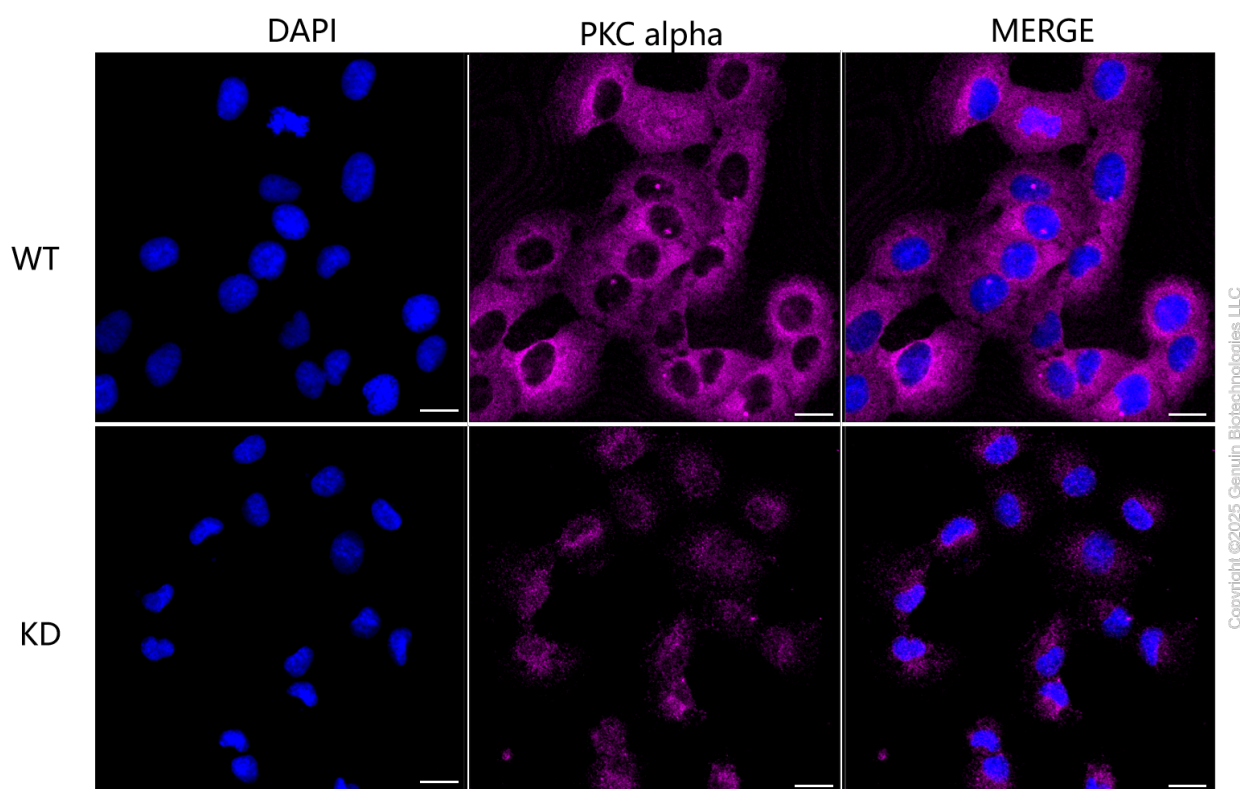


Western blotting analysis using anti-PKC alpha antibody (Cat#65641). PKC alpha expression in wild type (WT) and PKC alpha shRNA knockdown (KD) HT-1080 cells with 30 μ g of total cell lysates. β -Tubulin serves as a loading control. The blot was incubated with anti-PKC alpha antibody (Cat#65641, 1:5,000) and HRP-conjugated goat anti-rabbit secondary antibody (Cat#201, 1:20,000) respectively. Image was developed using FeQ™ ECL Substrate Kit (Cat#226).



Copyright ©2025 Genuin Biotechnologies LLC

Validation of PKC alpha knockdown using flow cytometry. Wild-type(WT, Blue) and knockdown(KD, Green) HT1080 cells were stained with anti-PKC alpha antibody (Cat#65641, 1:2,000) and analyzed using BD flow cytometer.



Immunocytochemical staining of HT-1080 cells using anti-PKC alpha antibody (Cat#65641, 1:1,000), Top panel: wild-type (WT); Bottom panel: PKC alpha shRNA knockdown (KD). Nuclei were stained blue with DAPI; PKC alpha was stained magenta with Alexa Fluor® 647. Scale bar, 20 μ m.