

# KD-Validated Anti-LLGL1 Rabbit Monoclonal Antibody



**Catalog #: 65649**

## Aliases

LLGL1; LLGL Scribble Cell Polarity Complex Component 1; Lgl1; Mgl1; DLG4; HUGL; LLGL; Lethal Giant Larvae Homolog 1, Scribble Cell Polarity Complex Component; Lethal(2) Giant Larvae Protein Homolog 1; Human Homolog To The D-Lgl Gene Protein; HUGL-1; HUGL1; LLGL1, Scribble Cell Polarity Complex Component; Lethal Giant Larvae Homolog 1 (Drosophila); Hugl-1

## Background

Gene Name: LLGL1

NCBI Gene Entry: [3996](#)

UniProt Entry: [Q15334](#)

## Application Information

Molecular Weight: Predicted, 115 kDa; observed, 130 kDa

Clonality: Rabbit monoclonal antibody

Clone ID: 25GB4695

Species Reactivity: Human

Applications Tested: Western blotting (WB), immunocytochemistry (IC), flow cytometry (FCM)

## Immunogen

Recombinant protein of human LLGL1

## Isotype

Rabbit IgG

## Storage Buffer

Supplied in PBS (pH 7.4) containing 50% glycerol, and 0.02% sodium azide.

## Storage

Store at -20 °C for one year.

## Recommended Dilutions

Western Blotting (WB): 1:1,000-1:5,000

Flow Cytometry (FCM): 1:2,000

Immunocytochemistry (IC): 1:100-1:1,000

---

### SUPPORT

SUPPORT@GENUINBIOTECH.COM  
TEL: +1-540-855-7041

### ORDERS

SALES@GENUINBIOTECH.COM  
FAX: +1-540-855-7041

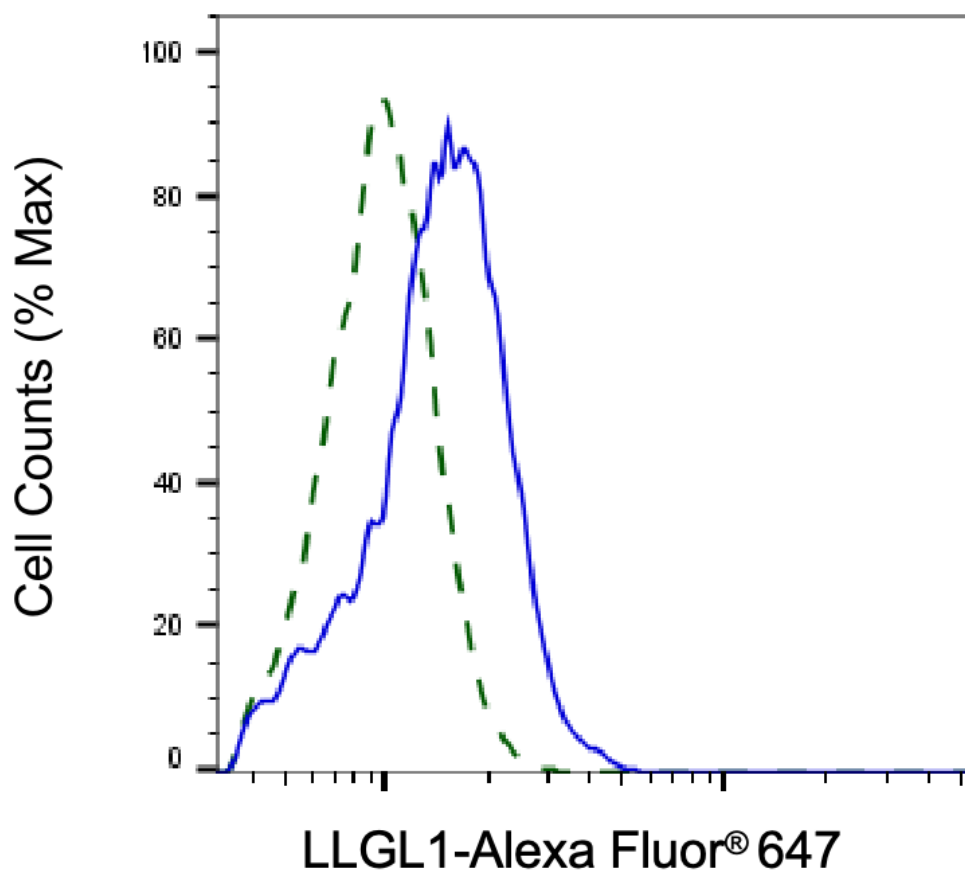
[WWW.GENUINBIOTECH.COM](http://WWW.GENUINBIOTECH.COM)

## KD-Validated Anti-LLGL1 Rabbit Monoclonal Antibody

PAGE 2

**Note:** This product is for research use only.

### Validation Data



Copyright ©2025 Genuin Biotechnologies LLC

Validation of LLGL1 knockdown using flow cytometry. Wild-type(WT, Blue) and knockdown(KD, Green) HeLa cells were stained with anti-LLGL1 antibody (Cat#65649, 1:2,000) and analyzed using BD flow cytometer.

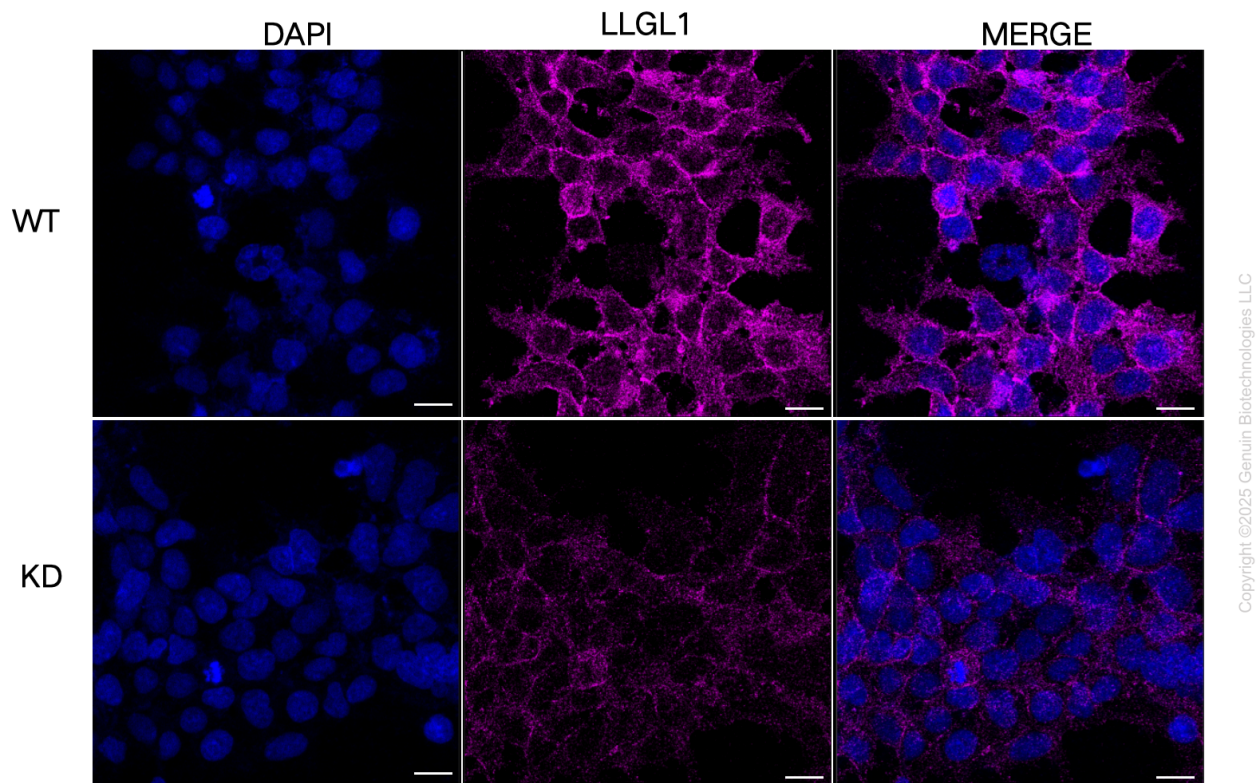
#### SUPPORT

SUPPORT@GENUINBIOTECH.COM  
TEL: +1-540-855-7041

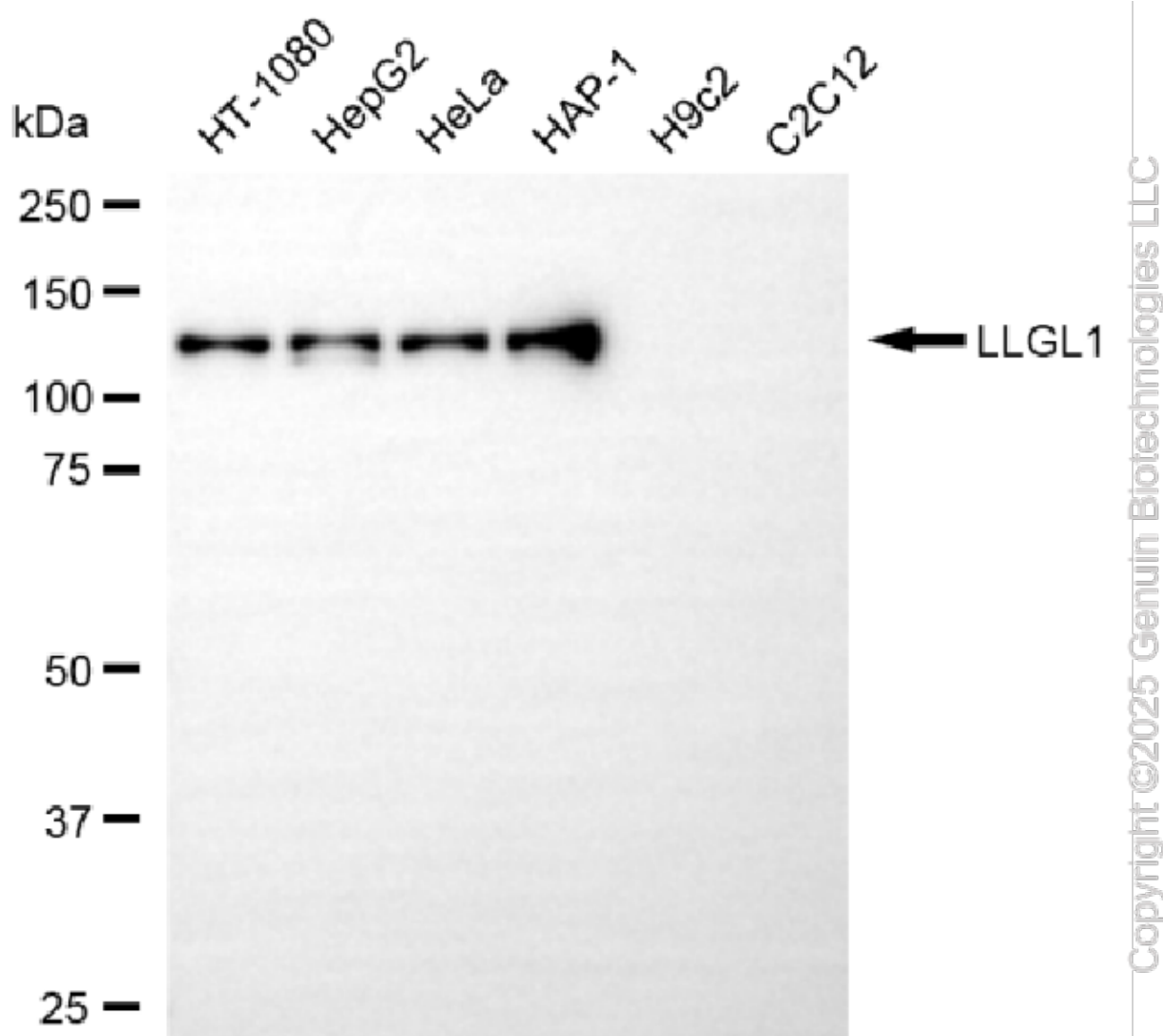
#### ORDERS

SALES@GENUINBIOTECH.COM  
FAX: +1-540-855-7041

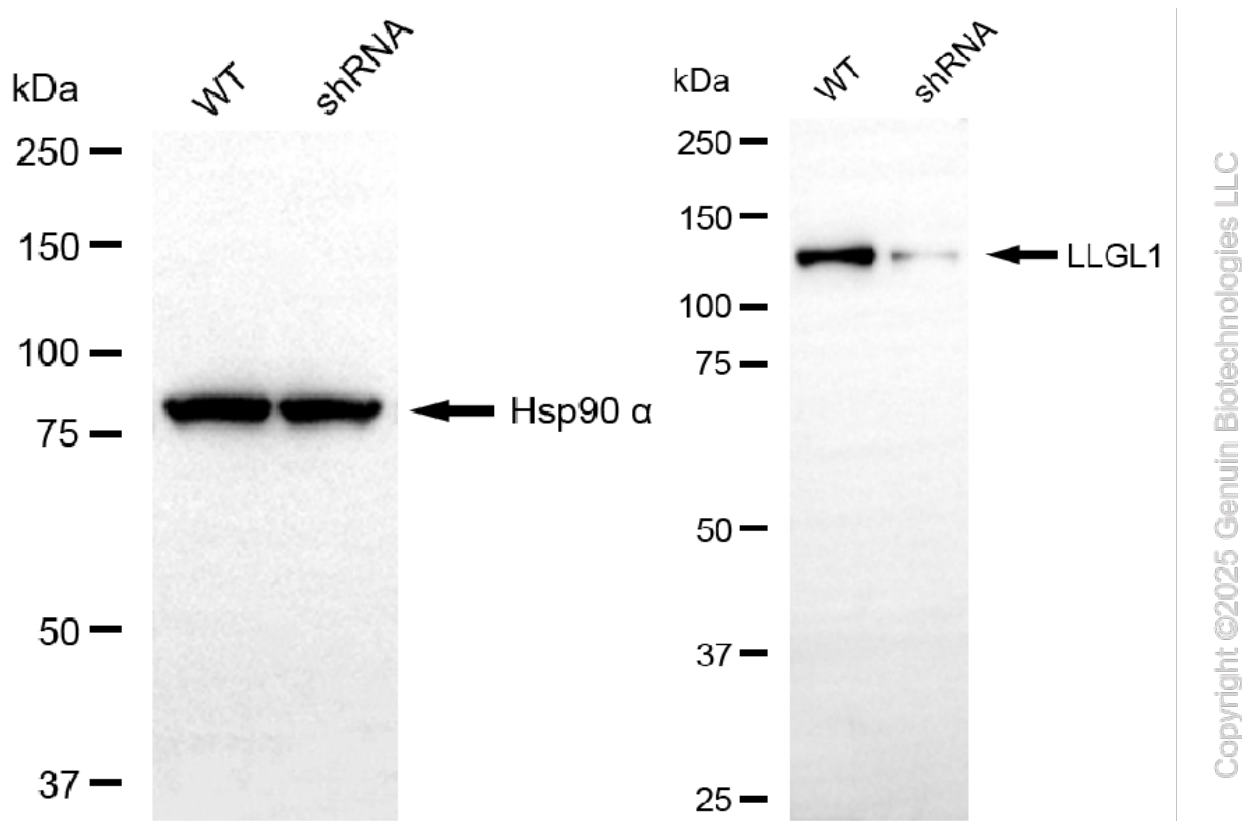
[WWW.GENUINBIOTECH.COM](http://WWW.GENUINBIOTECH.COM)



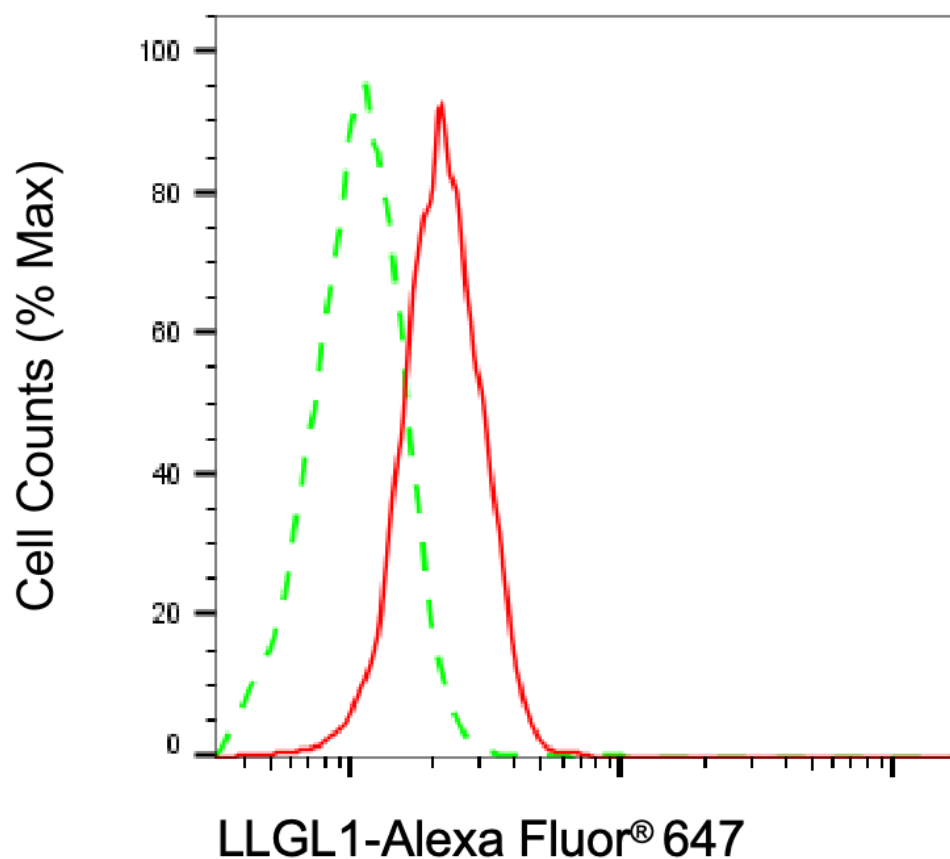
Immunocytochemical staining of HeLa cells using anti-LLGL1 antibody (Cat#65649, 1:1,000), Top panel: wild-type (WT); Bottom panel: LLGL1 shRNA knockdown (KD). Nuclei were stained blue with DAPI; LLGL1 was stained magenta with Alexa Fluor® 647. Scale bar, 20  $\mu$ m.



Western blotting analysis using anti-LLGL1 antibody (Cat#65649). Total cell lysates (30  $\mu$ g) from various cell lines were loaded and separated by SDS-PAGE. The blot was incubated with anti-LLGL1 antibody (Cat#65649, 1:5,000) and HRP-conjugated goat anti-rabbit secondary antibody (Cat#201, 1:20,000) respectively. Image was developed using NaQ™ ECL Substrate Kit (Cat#716).



Western blotting analysis using anti-LLGL1 antibody (Cat#65649). LLGL1 expression in wild-type (WT) and LLGL1 shRNA knockdown (KD) HeLa cells with 30 µg of total cell lysates. Hsp90 α serves as a loading control. The blot was incubated with anti-LLGL1 antibody (Cat#65649, 1:5,000) and HRP-conjugated goat anti-rabbit secondary antibody (Cat#201, 1:20,000) respectively. Image was developed using NaQ™ ECL Substrate Kit (Cat#716).



Copyright ©2025 Genuin Biotechnologies LLC

Flow cytometric analysis of LLGL1 expression in HAP-1 cells using anti-LLGL1 antibody (Cat#65649, 1:2,000). Green, isotype control; red, LLGL1.