

# KD-Validated Anti-NR2F2 Rabbit Monoclonal Antibody



**Catalog #: 65652**

## Aliases

NR2F2; Nuclear Receptor Subfamily 2 Group F Member 2; COUP Transcription Factor II; COUPTFB; COUPTF2; TFCOUP2; SVP40; NF-E3; ARP1; Apolipoprotein A-I Regulatory Protein 1; COUP Transcription Factor 2; COUP-TFII; ARP-1; Chicken Ovalbumin Upstream Promoter Transcription Factor 2; Chicken Ovalbumin Upstream Promoter-Transcription Factor I; Nuclear Receptor Subfamily 2, Group F, Member 2; ADP-Ribosylation Factor Related Protein 1; Apolipoprotein AI Regulatory Protein 1; COUP-TF II; COUPTFII; COUP-TF2; CHTD4; SRXX5

## Background

Gene Name: NR2F2

NCBI Gene Entry: [7026](#)

UniProt Entry: [P24468](#)

## Application Information

Molecular Weight: Predicted, 46 kDa; observed, 46 kDa

Clonality: Rabbit monoclonal antibody

Clone ID: 25GB4710

Species Reactivity: Human, mouse, rat

Applications Tested: Western blotting (WB), flow cytometry (FCM), immunocytochemistry (IC)

## Immunogen

A synthesized peptide derived from human NR2F2

## Isotype

Rabbit IgG

## Storage Buffer

Supplied in PBS (pH 7.4) containing 50% glycerol, and 0.02% sodium azide.

## Storage

Store at -20 °C for one year.

## Recommended Dilutions

Western Blotting (WB): 1:1,000-1:5,000

Flow Cytometry (FCM): 1:2,000

Immunocytochemistry (IC): 1:100-1:1,000

---

### SUPPORT

SUPPORT@GENUINBIOTECH.COM  
TEL: +1-540-855-7041

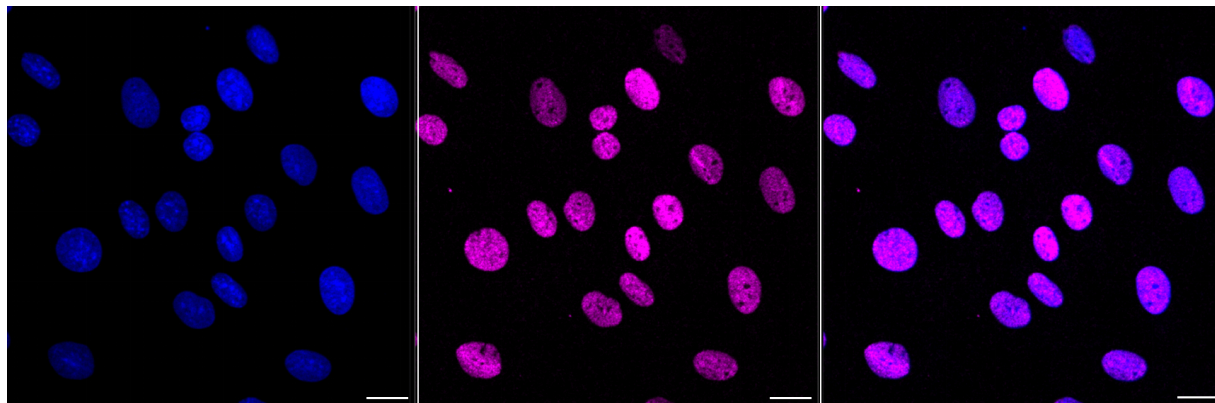
### ORDERS

SALES@GENUINBIOTECH.COM  
FAX: +1-540-855-7041

[WWW.GENUINBIOTECH.COM](http://WWW.GENUINBIOTECH.COM)

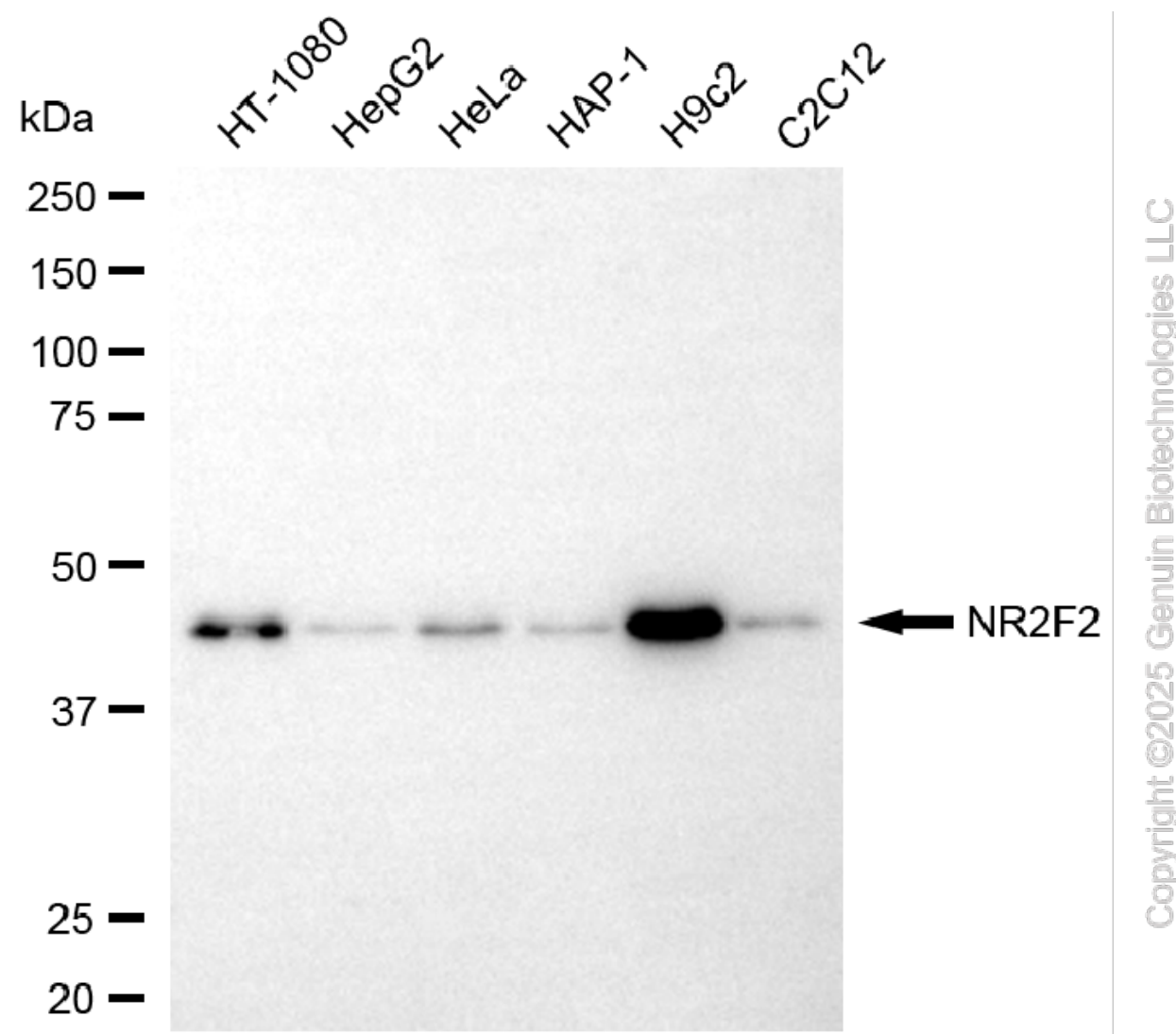
**Note:** This product is for research use only.

## Validation Data

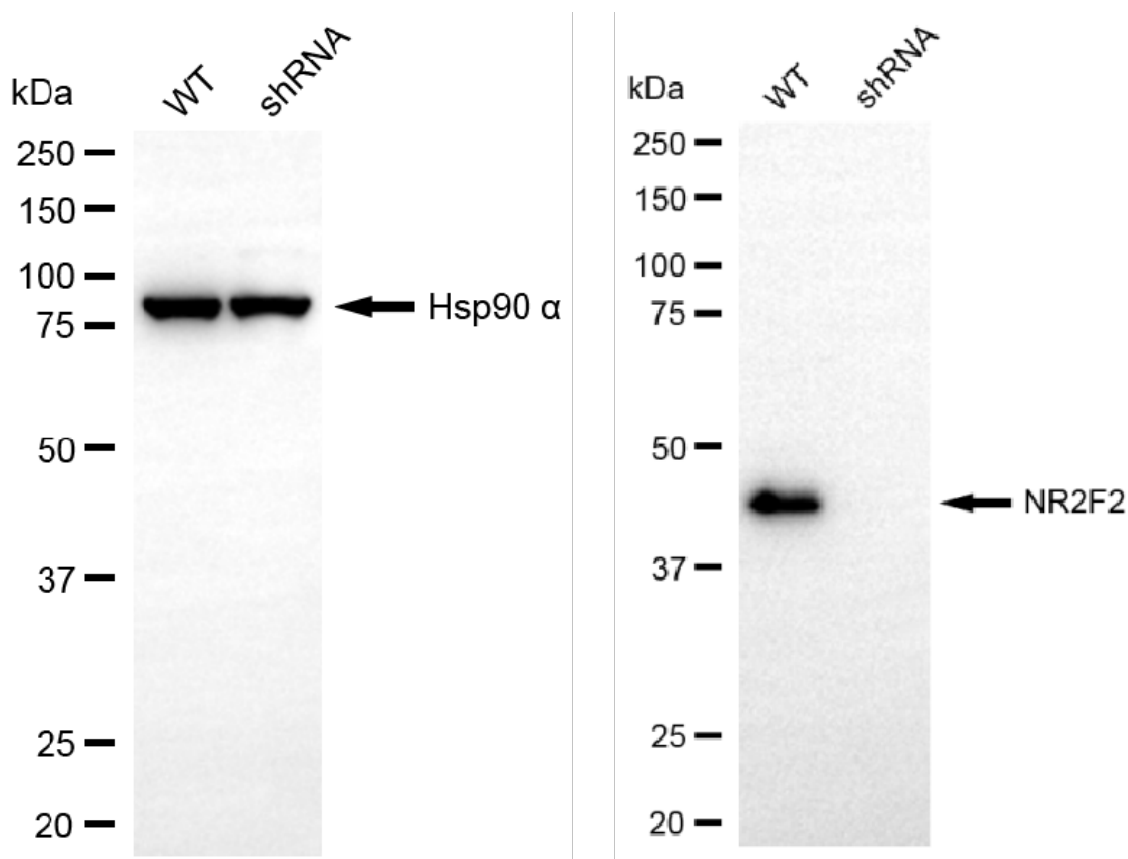


Copyright ©2025 Genuin Biotechnologies LLC

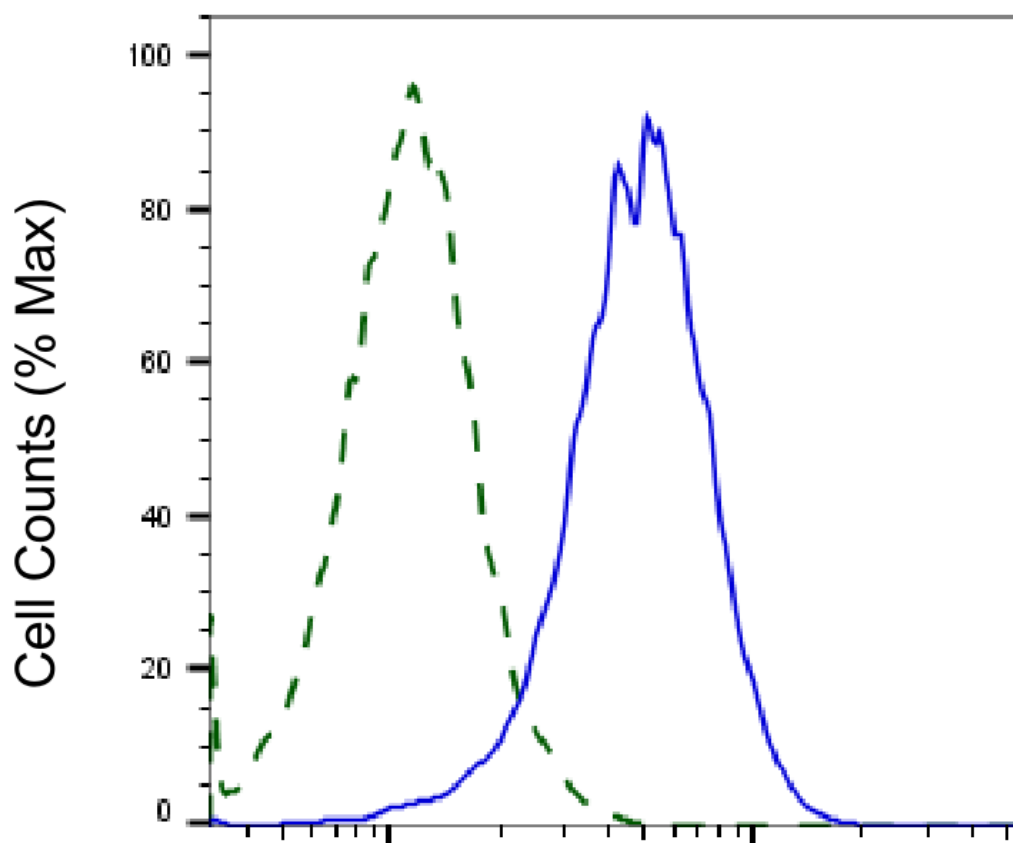
Immunocytochemical staining of H9c2 cells with anti-NR2F2 antibody (Cat#65652, 1:1,000) . Nuclei were stained blue with DAPI; NR2F2 was stained magenta with Alexa Fluor® 647. Images were taken using Leica stellaris 5. Protein abundance based on laser Intensity and smart gain: Medium. Scale bar, 20  $\mu$ m.



Western blotting analysis using anti-NR2F2 antibody (Cat#65652). Total cell lysates (30 µg) from various cell lines were loaded and separated by SDS-PAGE. The blot was incubated with anti-NR2F2 antibody (Cat#65652, 1:5,000) and HRP-conjugated goat anti-rabbit secondary antibody (Cat#201, 1:20,000) respectively. Image was developed using FeQ™ ECL Substrate Kit (Cat#226).



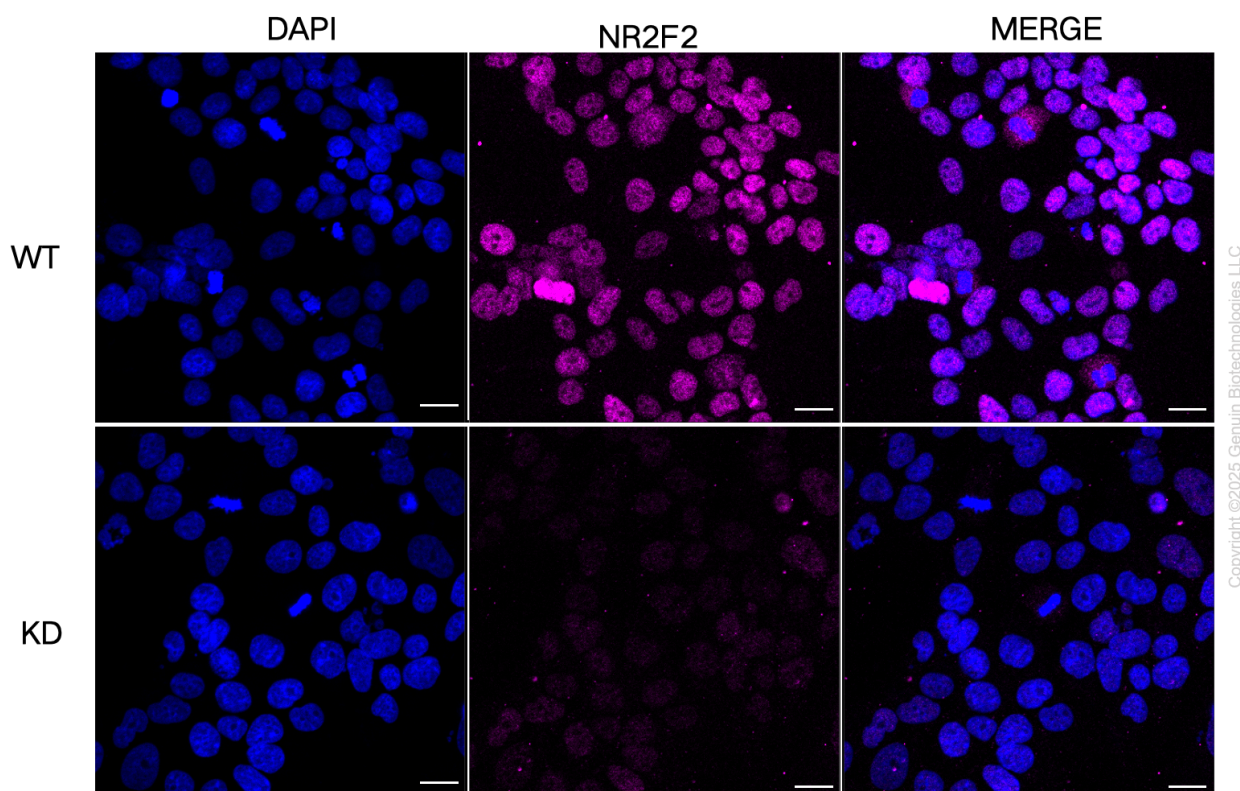
Western blotting analysis using anti-NR2F2 antibody (Cat#65652). NR2F2 expression in wild-type (WT) and NR2F2 shRNA knockdown (KD) HeLa cells with 20  $\mu$ g of total cell lysates. Hsp90  $\alpha$  serves as a loading control. The blot was incubated with anti-NR2F2 antibody (Cat#65652, 1:5,000) and HRP-conjugated goat anti-rabbit secondary antibody (Cat#201, 1:20,000) respectively. Image was developed using FeQ™ ECL Substrate Kit (Cat#226).



Copyright ©2025 Genuin Biotechnologies LLC

### NR2F2-Alexa Fluor® 647

Validation of NR2F2 knockdown using flow cytometry. Wild-type(WT, Blue) and knockdown(KD, Green) HeLa cells were stained with anti-NR2F2 antibody (Cat#65652, 1:2,000) and analyzed using BD flow cytometer.



Immunocytochemical staining of HeLa cells using anti-NR2F2 antibody (Cat#65652, 1:1,000), Top panel: wild-type (WT); Bottom panel: NR2F2 shRNA knockdown (KD). Nuclei were stained blue with DAPI; Acyl-CoA dehydrogenase short chain was stained magenta with Alexa Fluor® 647. Scale bar, 20  $\mu$ m.