

KD-Validated Anti-Optineurin Rabbit Monoclonal Antibody



Catalog #: 65653

Aliases

OPTN; Optineurin; FIP-2; FIP2; HYPL; HIP7; NRP; TFIIIA-INTP; GLC1E; Transcription Factor IIIA-Interacting Protein; Optic Neuropathy-Inducing Protein; Huntingtin-Interacting Protein 7; Huntingtin-Interacting Protein L; E3-14.7K-Interacting Protein; Huntingtin Yeast Partner L; HIP-7; Tumor Necrosis Factor Alpha-Inducible Cellular Protein Containing Leucine Zipper Domains; Transcription Factor IIIA-Interacting Protein; Glaucoma 1, Open Angle, E (Adult-Onset); Huntingtin Interacting Protein L; Nemo-Related Protein; NEMO-Related Protein; TFIIIA-IntP; ALS12

Background

Gene Name: OPTN

NCBI Gene Entry: [10133](#)

UniProt Entry: [Q96CV9](#)

Application Information

Molecular Weight: Predicted, 66 kDa; observed, 70 kDa

Clonality: Rabbit monoclonal antibody

Clone ID: 25GB4715

Species Reactivity: Human

Applications Tested: Western blotting (WB), flow cytometry (FCM), immunocytochemistry (IC)

Immunogen

Recombinant protein of human Optineurin

Isotype

Rabbit IgG

Storage Buffer

Supplied in PBS (pH 7.4) containing 50% glycerol, and 0.02% sodium azide.

Storage

Store at -20 °C for one year.

Recommended Dilutions

Western Blotting (WB): 1:1,000-1:5,000

Flow Cytometry (FCM): 1:2,000

SUPPORT

SUPPORT@GENUINBIOTECH.COM
TEL: +1-540-855-7041

ORDERS

SALES@GENUINBIOTECH.COM
FAX: +1-540-855-7041

WWW.GENUINBIOTECH.COM

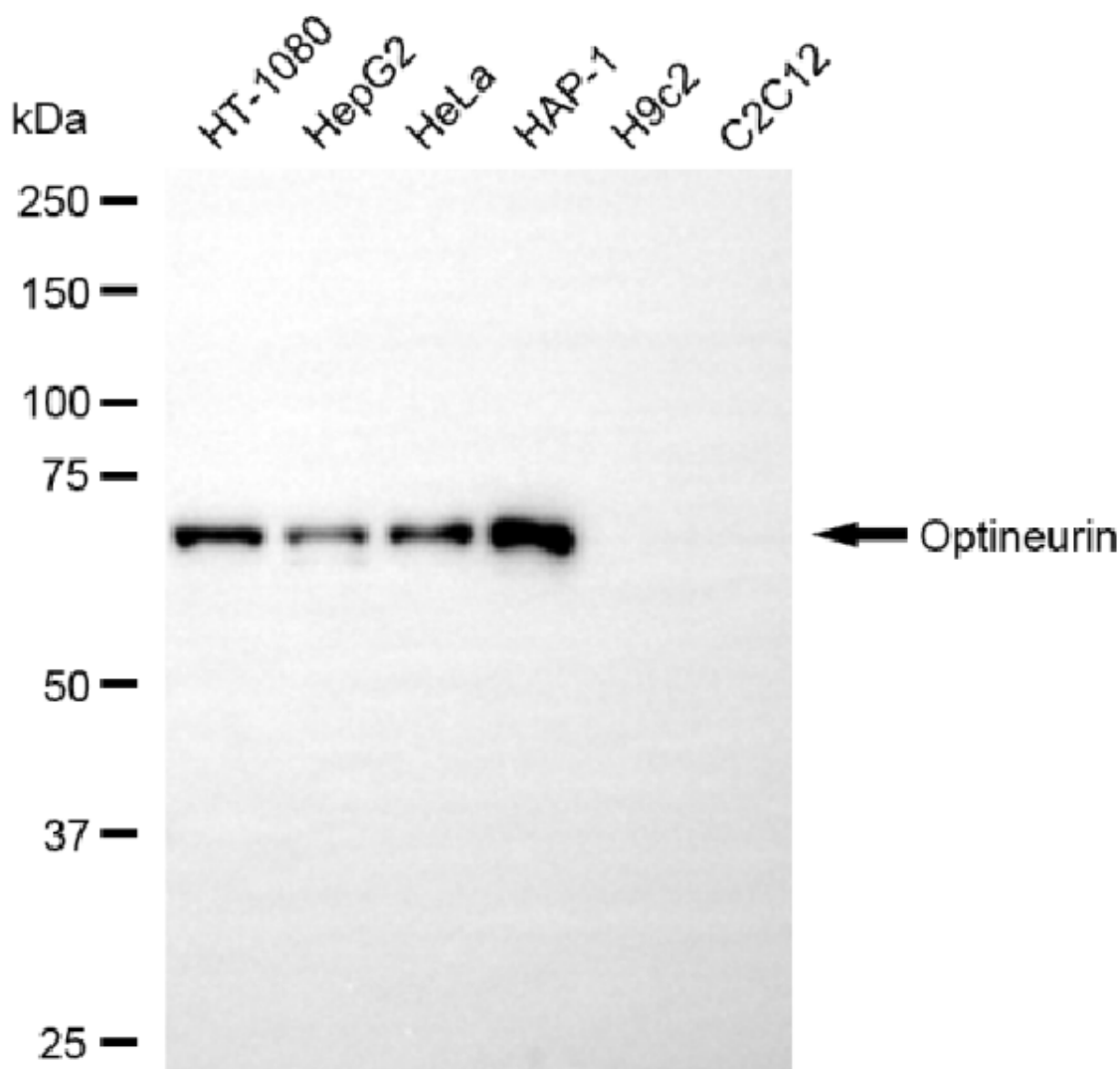
KD-Validated Anti-Optineurin Rabbit Monoclonal Antibody

PAGE 2

Immunocytochemistry (IC): 1:100-1:1,000

Note: This product is for research use only.

Validation Data



Copyright ©2025 Genuin Biotechnologies LLC

Western blotting analysis using anti-optineurin antibody (Cat#65653). Total cell lysates (30 µg) from various cell lines were loaded and separated by SDS-PAGE. The blot was incubated with anti-optineurin antibody (Cat#65653, 1:5,000) and HRP-conjugated goat anti-rabbit secondary antibody (Cat#201, 1:20,000) respectively. Image was developed using NaQ™ ECL Substrate Kit (Cat#716).

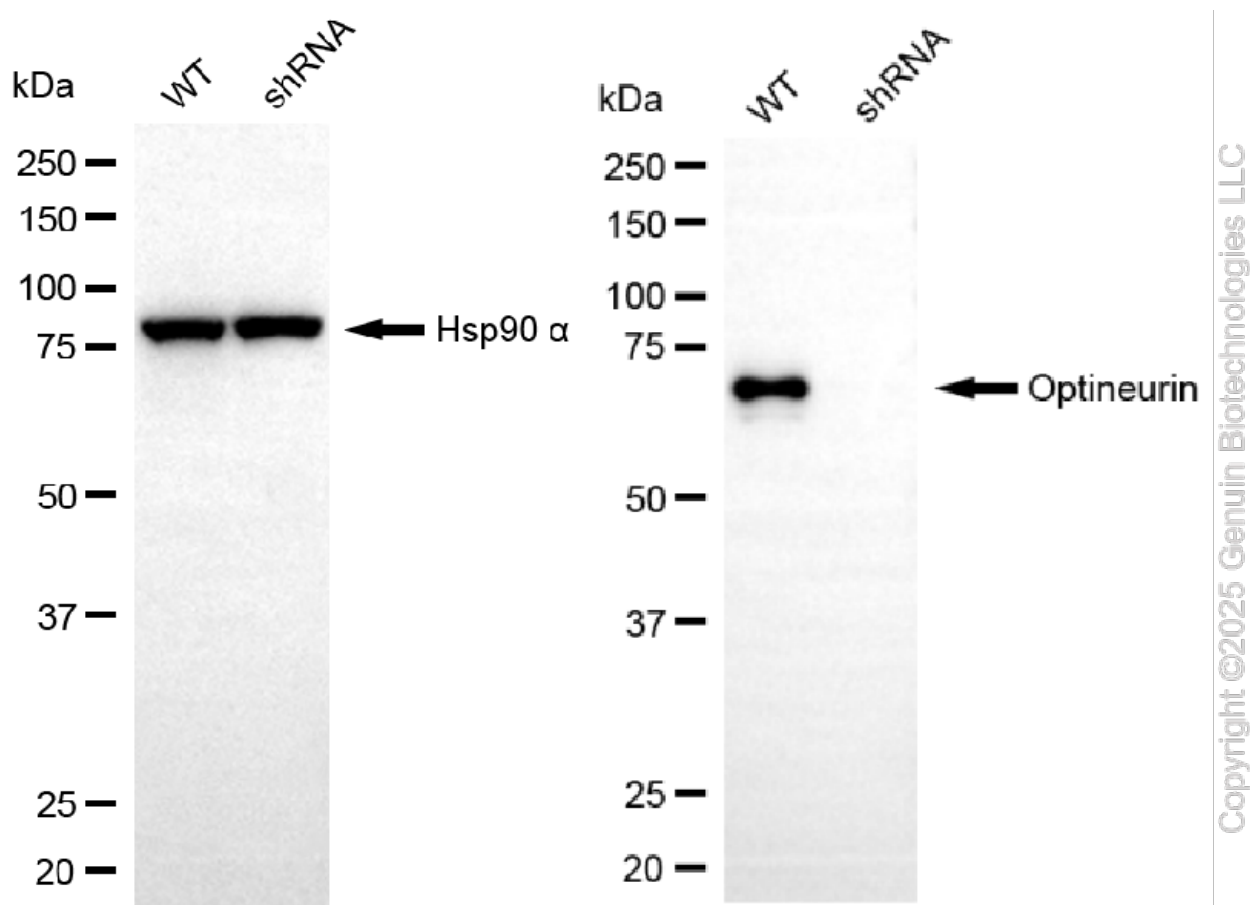
SUPPORT

SUPPORT@GENUINBIOTECH.COM
TEL: +1-540-855-7041

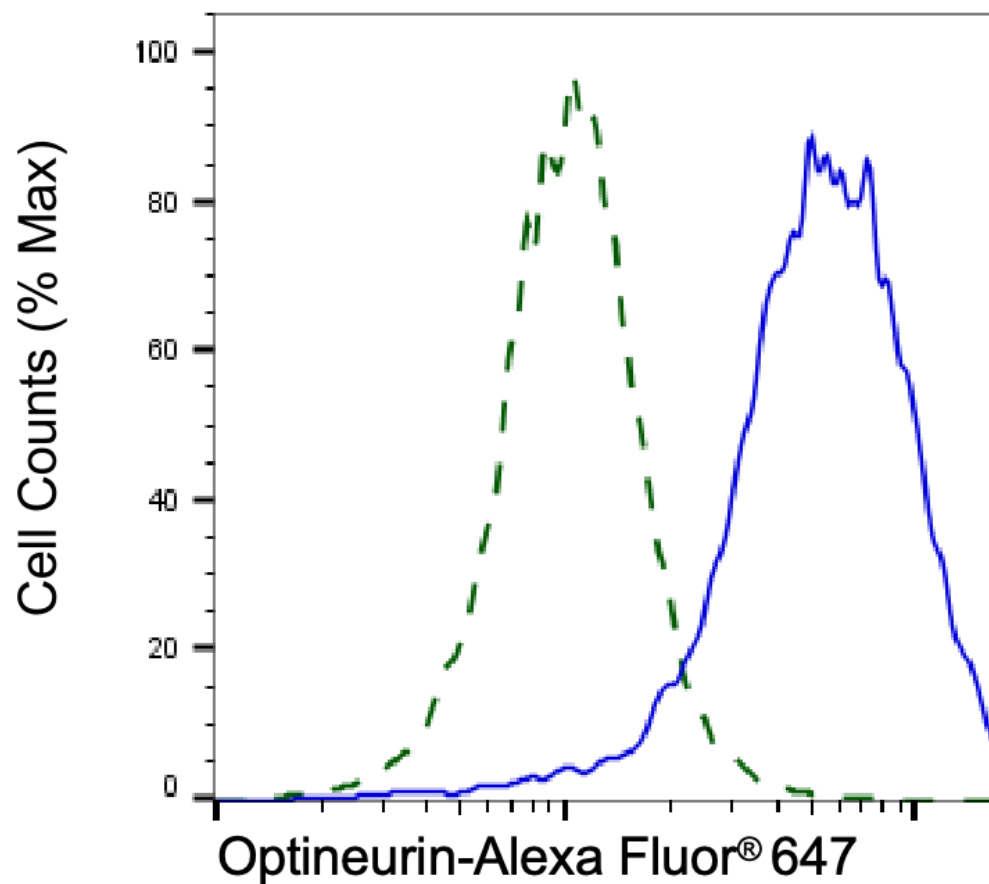
ORDERS

SALES@GENUINBIOTECH.COM
FAX: +1-540-855-7041

WWW.GENUINBIOTECH.COM

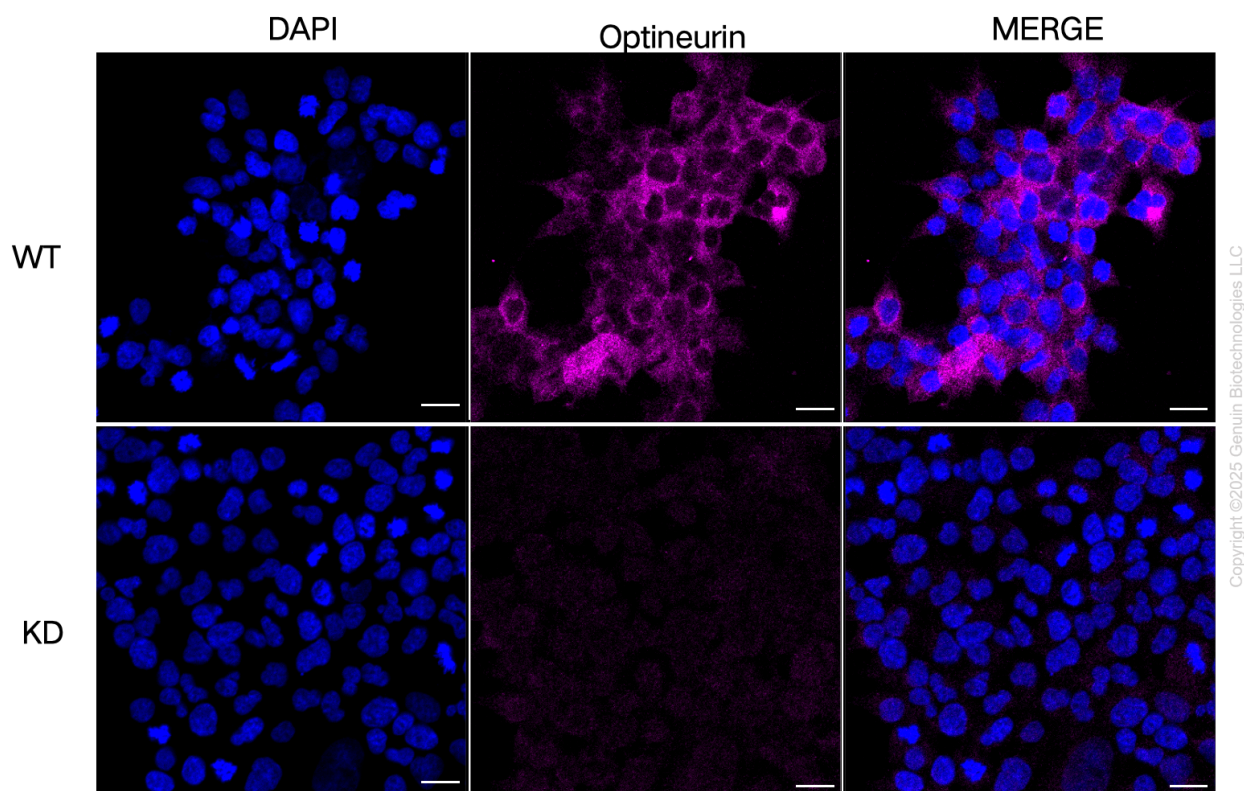


Western blotting analysis using anti-optineurin antibody (Cat#65653). Optineurin expression in wild-type (WT) and optineurin (OPTN) shRNA knockdown (KD) HeLa cells with 20 µg of total cell lysates. Hsp90 α serves as a loading control. The blot was incubated with anti-optineurin antibody (Cat#65653, 1:5,000) and HRP-conjugated goat anti-rabbit secondary antibody (Cat#201, 1:20,000) respectively. Image was developed using NaQ™ ECL Substrate Kit (Cat#716).



Copyright ©2025 Genuin Biotechnologies LLC

Validation of Optineurin knockdown using flow cytometry. Wild-type(WT, Blue) and knockdown(KD, Green) HeLa cells were stained with anti-Optineurin antibody (Cat#65653, 1:2,000) and analyzed using BD flow cytometer.



Immunocytochemical staining of HeLa cells using anti-Optineurin antibody (Cat#65653, 1:1,000), Top panel: wild-type (WT); Bottom panel: Optineurin shRNA knockdown (KD). Nuclei were stained blue with DAPI; Acyl-CoA dehydrogenase short chain was stained magenta with Alexa Fluor® 647. Scale bar, 20 μ m.