

# KD-Validated Anti-SMARCD1 Rabbit Monoclonal Antibody



**Catalog #: 65659**

## Aliases

SMARCD1; SWI/SNF Related BAF Chromatin Remodeling Complex Subunit D1; BAF60A; SWI/SNF Related, Matrix Associated, Actin Dependent Regulator Of Chromatin, Subfamily D, Member 1; CRACD1; Rsc6p; SWI/SNF-Related Matrix-Associated Actin-Dependent Regulator Of Chromatin Subfamily D Member 1; 60 KDa BRG-1/Brm-Associated Factor Subunit A; BRG1-Associated Factor 60A; Mammalian Chromatin Remodeling Complex BRG1-Associated Factor 60A; Chromatin Remodeling Complex BAF60A Subunit; SWI/SNF Complex 60 KDa Subunit A; SWI/SNF Complex 60 KDa Subunit; Swp73-Like Protein; CSS11

## Background

Gene Name: SMARCD1

NCBI Gene Entry: [6602](#)

UniProt Entry: [Q96GM5](#)

## Application Information

Molecular Weight: Predicted, 58 kDa; observed, 58 kDa

Clonality: Rabbit monoclonal antibody

Clone ID: 25GB4745

Species Reactivity: Human, mouse, rat

Applications Tested: Western blotting (WB), flow cytometry (FCM), immunocytochemistry (IC)

## Immunogen

A synthesized peptide derived from human SMARCD1

## Isotype

Rabbit IgG

## Storage Buffer

Supplied in PBS (pH 7.4) containing 50% glycerol, and 0.02% sodium azide.

## Storage

Store at -20 °C for one year.

## Recommended Dilutions

Western Blotting (WB): 1:1,000-1:5,000

Flow Cytometry (FCM): 1:2,000

---

### SUPPORT

SUPPORT@GENUINBIOTECH.COM  
TEL: +1-540-855-7041

### ORDERS

SALES@GENUINBIOTECH.COM  
FAX: +1-540-855-7041

[WWW.GENUINBIOTECH.COM](http://WWW.GENUINBIOTECH.COM)

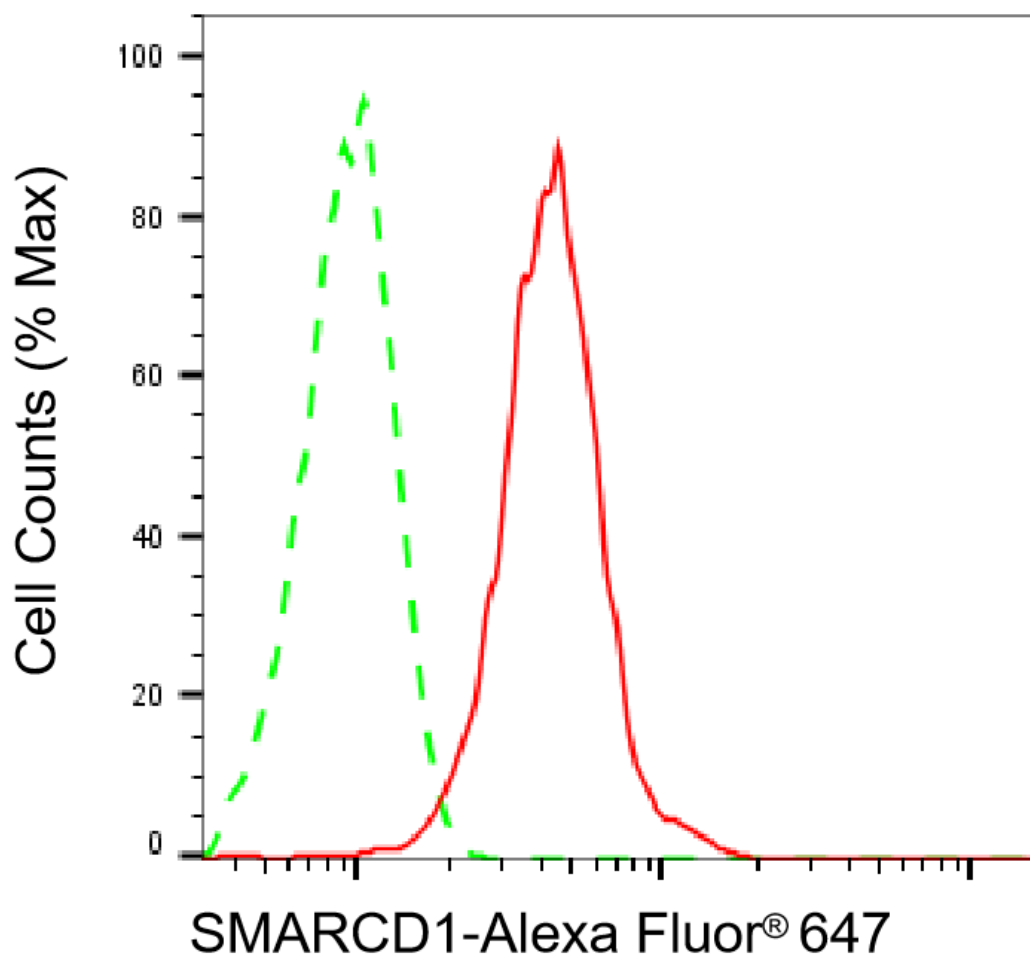
## KD-Validated Anti-SMARCD1 Rabbit Monoclonal Antibody

PAGE 2

Immunocytochemistry (IC): 1:100-1:1,000

**Note:** This product is for research use only.

### Validation Data



Copyright ©2025 Genuin Biotechnologies LLC

Flow cytometric analysis of SMARCD1 expression in HepG2 cells using anti-SMARCD1 antibody (Cat#65659, 1:2,000). Green, isotype control; red, SMARCD1.

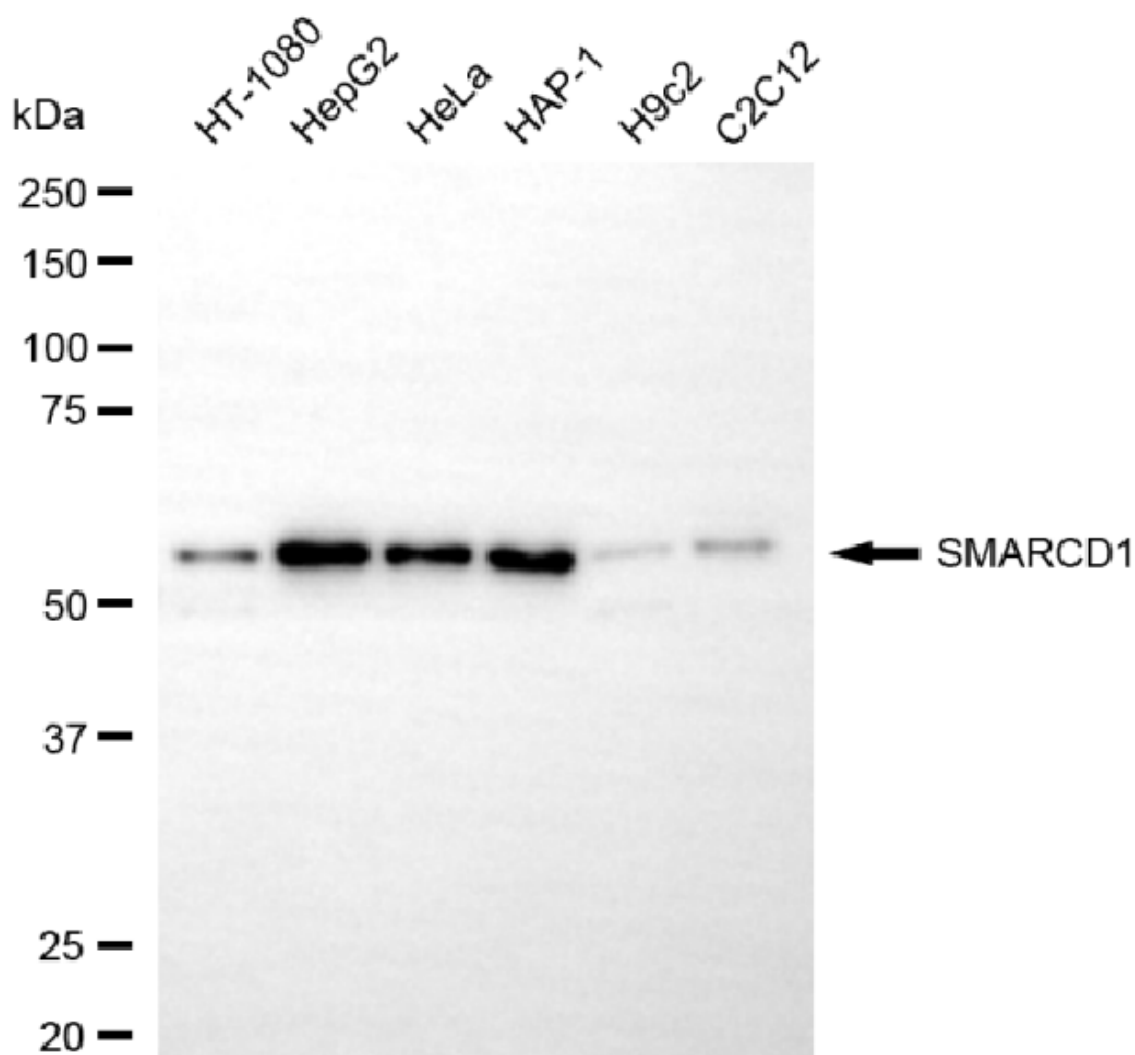
#### SUPPORT

SUPPORT@GENUINBIOTECH.COM  
TEL: +1-540-855-7041

#### ORDERS

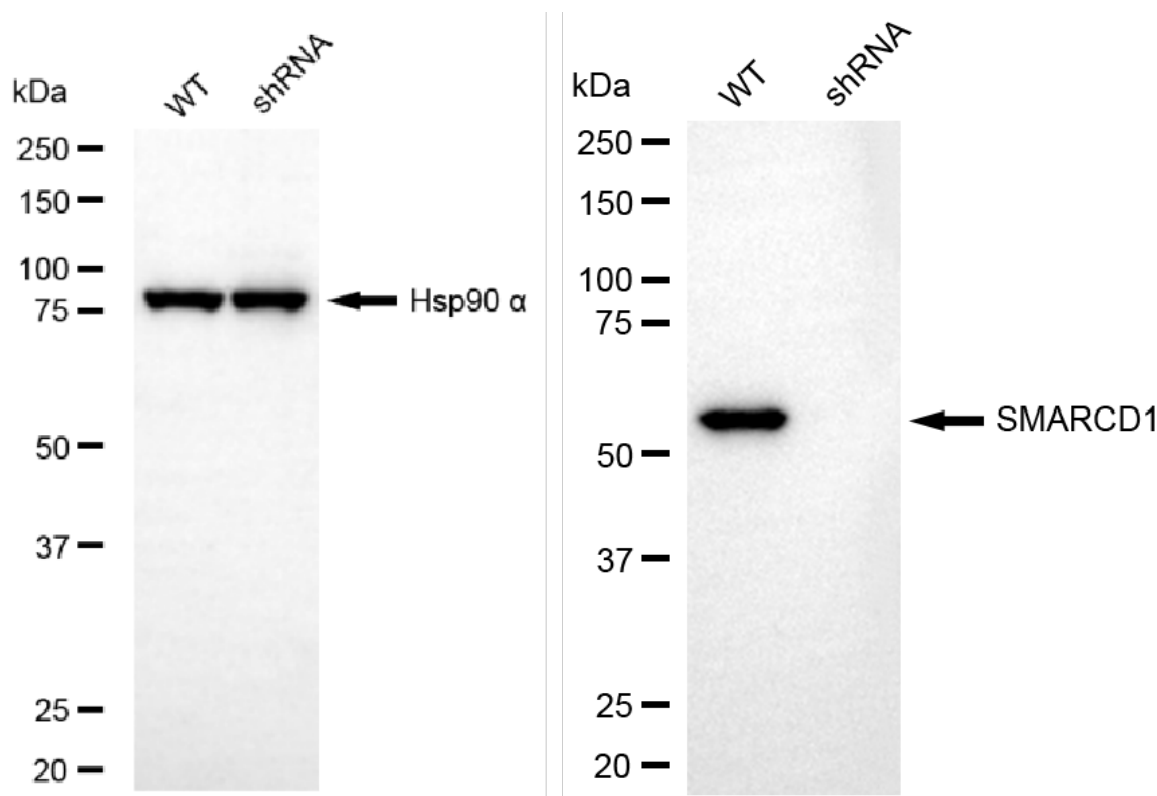
SALES@GENUINBIOTECH.COM  
FAX: +1-540-855-7041

[WWW.GENUINBIOTECH.COM](http://WWW.GENUINBIOTECH.COM)



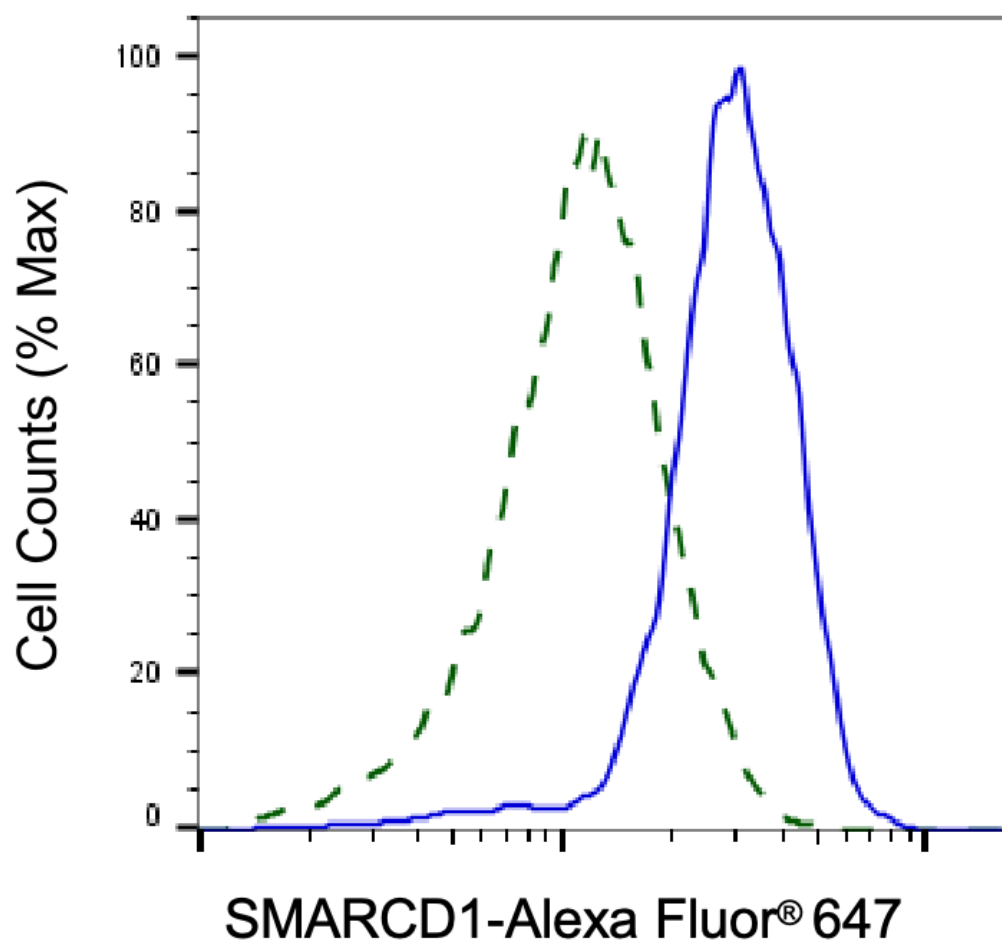
Copyright ©2025 Genuin Biotechnologies LLC

Western blotting analysis using anti-SMARCD1 antibody (Cat#65659). Total cell lysates (30 µg) from various cell lines were loaded and separated by SDS-PAGE. The blot was incubated with anti-SMARCD1 antibody (Cat#65659, 1:5,000) and HRP-conjugated goat anti-rabbit secondary antibody (Cat#201, 1:20,000) respectively. Image was developed using NaQ™ ECL Substrate Kit (Cat#716).



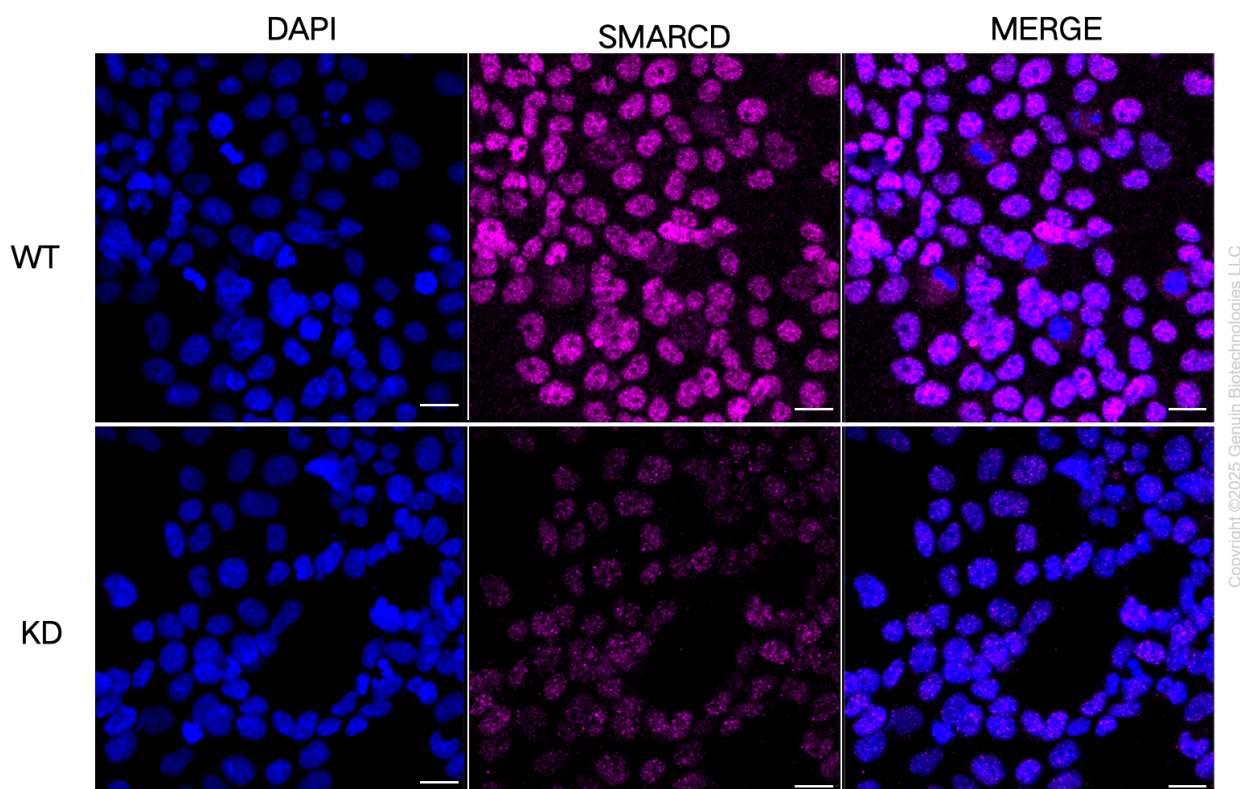
Copyright ©2025 Genuin Biotechnologies LLC

Western blotting analysis using anti-SMARCD1 antibody (Cat#65659). SMARCD1 expression in wild-type (WT) and SMARCD1 shRNA knockdown (KD) HeLa cells with 20 µg of total cell lysates. Hsp90 α serves as a loading control. The blot was incubated with anti-SMARCD1 antibody (Cat#65659, 1:5,000) and HRP-conjugated goat anti-rabbit secondary antibody (Cat#201, 1:20,000) respectively. Image was developed using NaQ™ ECL Substrate Kit (Cat#716).



Copyright ©2025 Genuin Biotechnologies LLC

Validation of SMARCD1 knockdown using flow cytometry. Wild-type(WT, Blue) and knockdown(KD, Green) HeLa cells were stained with anti-SMARCD1 antibody (Cat#65659, 1:2,000) and analyzed using BD flow cytometer.



Immunocytochemical staining of HeLa cells using anti-SMARCD1 antibody (Cat#65659, 1:1,000), Top panel: wild-type (WT); Bottom panel: SMARCD1 shRNA knockdown (KD). Nuclei were stained blue with DAPI; Acyl-CoA dehydrogenase short chain was stained magenta with Alexa Fluor® 647. Scale bar, 20  $\mu$ m.