

KD-Validated Anti-TPX2 Rabbit Monoclonal Antibody



Catalog #: 65663

Aliases

TPX2; TPX2 Microtubule Nucleation Factor; HCA519; DIL-2; P100; Hepatocellular Carcinoma-Associated Antigen 519; Targeting Protein For Xklp2; C20orf1; C20orf2; FLS353; Differentially Expressed In Cancerous And Non-Cancerous Lung Cells 2; Differentially Expressed In Cancerous And Noncancerous Lung Cells 2; Hepatocellular Carcinoma-Associated Antigen 90; Protein Fls353; DIL2; Restricted Expression Proliferation Associated Protein 100; Restricted Expression Proliferation-Associated Protein 100; TPX2, Microtubule-Associated, Homolog (Xenopus Laevis); Preferentially Expressed In Colorectal Cancer; TPX2, Microtubule-Associated Protein Homolog; Differentially Expressed In Lung Cells; TPX2, Microtubule-Associated, Homolog; Chromosome 20 Open Reading Frame 1; TPX2, Microtubule-Associated; GD:C20orf1; REPP86; HCTP4

Background

Gene Name: TPX2

NCBI Gene Entry: [22974](#)

UniProt Entry: [Q9ULW0](#)

Application Information

Molecular Weight: Predicted, 86 kDa; observed, 98 kDa

Clonality: Rabbit monoclonal antibody

Clone ID: 25GB4765

Species Reactivity: Human

Applications Tested: Western blotting (WB), flow cytometry (FCM)

Immunogen

A synthesized peptide derived from human TPX2

Isotype

Rabbit IgG

Storage Buffer

Supplied in PBS (pH 7.4) containing 50% glycerol, and 0.02% sodium azide.

Storage

Store at -20 °C for one year.

SUPPORT

SUPPORT@GENUINBIOTECH.COM
TEL: +1-540-855-7041

ORDERS

SALES@GENUINBIOTECH.COM
FAX: +1-540-855-7041

WWW.GENUINBIOTECH.COM

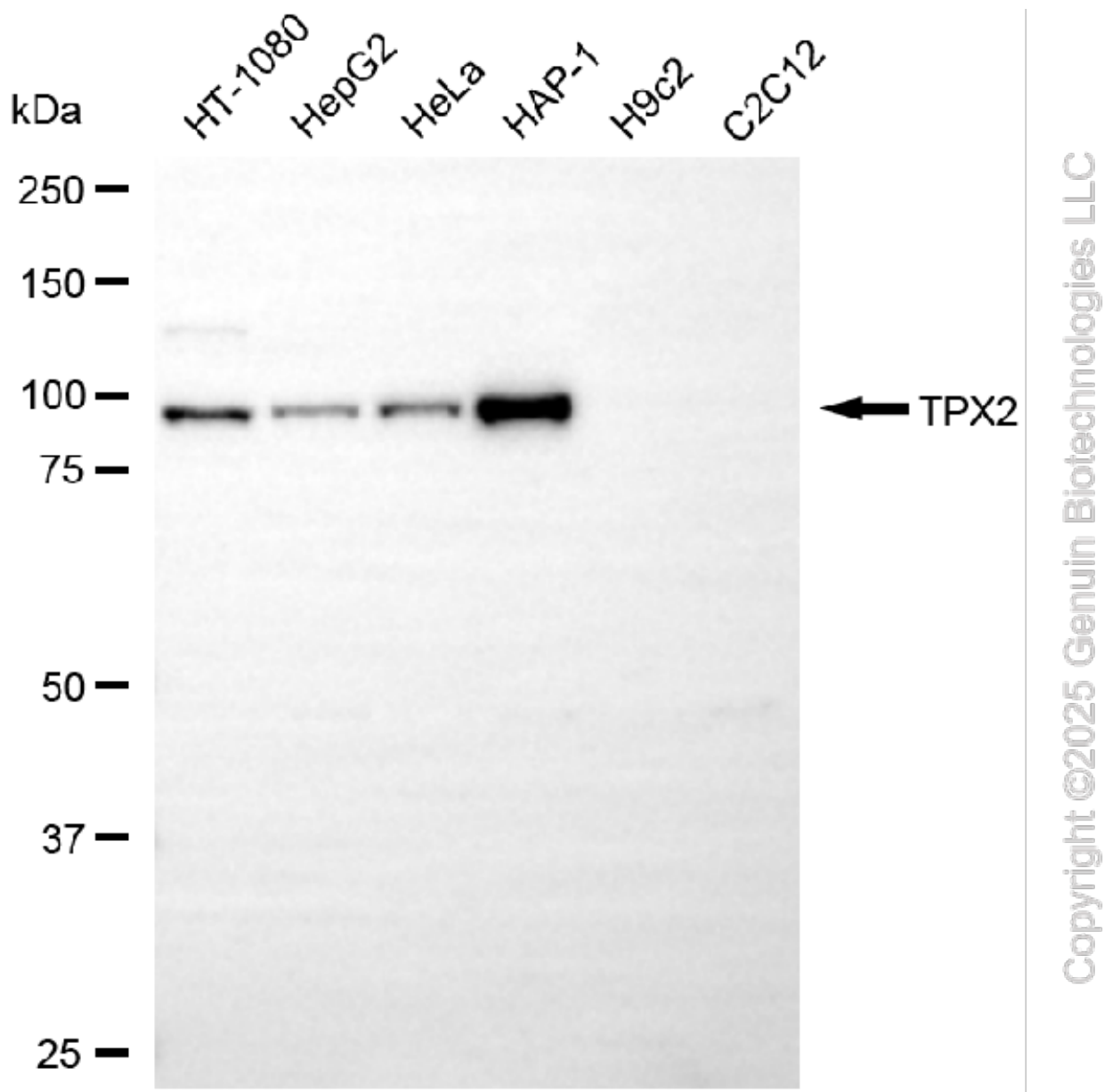
Recommended Dilutions

Western Blotting (WB): 1:1,000-1:5,000

Flow Cytometry (FCM): 1:2,000

Note: This product is for research use only.

Validation Data



Western blotting analysis using anti-TPX2 antibody (Cat#65663). Total cell lysates (30 µg) from various cell lines were loaded and separated by SDS-PAGE. The blot was incubated with anti-TPX2 antibody (Cat#65663, 1:5,000) and HRP-conjugated goat anti-rabbit secondary antibody (Cat#201, 1:20,000) respectively. Image was developed using NaQ™ ECL Substrate Kit

SUPPORT

SUPPORT@GENUINBIOTECH.COM
TEL: +1-540-855-7041

ORDERS

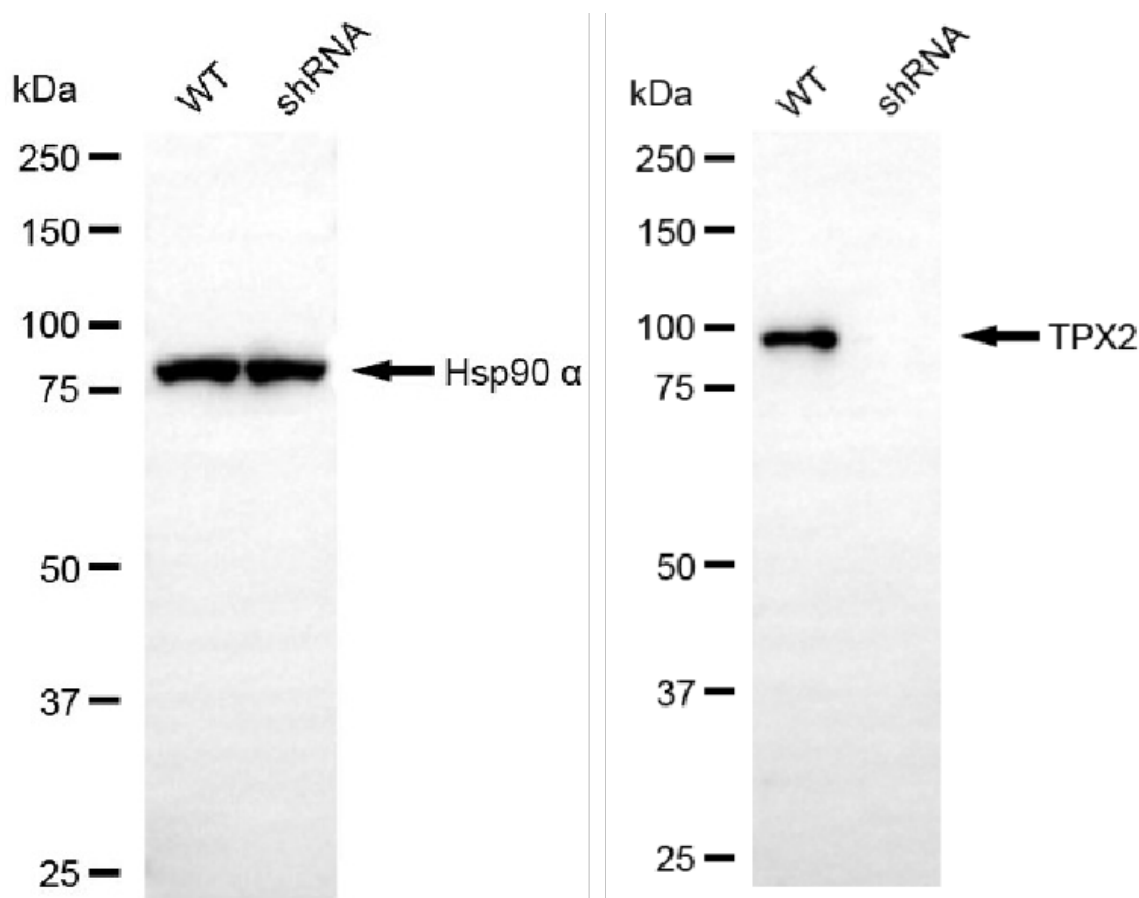
SALES@GENUINBIOTECH.COM
FAX: +1-540-855-7041

WWW.GENUINBIOTECH.COM

KD-Validated Anti-TPX2 Rabbit Monoclonal Antibody

PAGE 3

(Cat#716).



Copyright ©2025 Genuin Biotechnologies LLC

Western blotting analysis using anti-TPX2 antibody (Cat#65663). TPX2 expression in wild-type (WT) and TPX2 shRNA knockdown (KD) HeLa cells with 20 µg of total cell lysates. Hsp90 α serves as a loading control. The blot was incubated with anti-TPX2 antibody (Cat#65663, 1:5,000) and HRP-conjugated goat anti-rabbit secondary antibody (Cat#201, 1:20,000) respectively. Image was developed using NaQ™ ECL Substrate Kit (Cat#716).

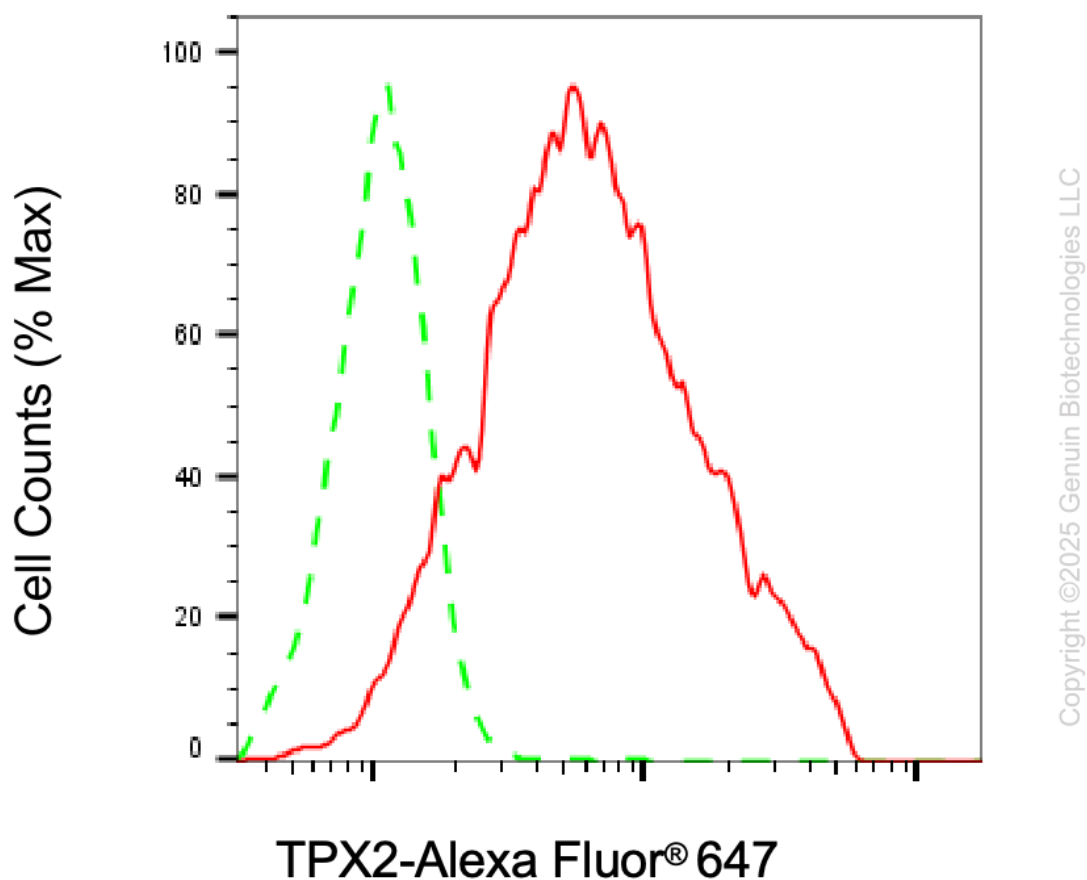
SUPPORT

SUPPORT@GENUINBIOTECH.COM
TEL: +1-540-855-7041

ORDERS

SALES@GENUINBIOTECH.COM
FAX: +1-540-855-7041

WWW.GENUINBIOTECH.COM



Flow cytometric analysis of TPX2 expression in HAP-1 cells using anti-TPX2 antibody (Cat#65663, 1:2,000). Green, isotype control; red, TPX2.