

# KD-Validated Anti-WWOX Rabbit Monoclonal Antibody



**Catalog #: 65666**

## Aliases

WWOX; WW Domain Containing Oxidoreductase; SDR41C1; WOX1; FOR; WW Domain-Containing Oxidoreductase; Short Chain Dehydrogenase/Reductase Family 41C Member 1; Fragile Site FRA16D Oxidoreductase; Short Chain Dehydrogenase/Reductase Family 41C, Member 1; WW Domain-Containing Protein WWOX; EC 1.1.1.-; D16S432E; EC 1.1.1.; HHCMA56; PRO0128; EIEE28; FRA16D; SCAR12; DEE28

## Background

Gene Name: WWOX

NCBI Gene Entry: [51741](#)

UniProt Entry: [Q9NZC7](#)

## Application Information

Molecular Weight: Predicted, 47 kDa; observed, 40 kDa

Clonality: Rabbit monoclonal antibody

Clone ID: 25GB4780

Species Reactivity: Human, mouse, rat

Applications Tested: Western blotting (WB), immunocytochemistry (IC), flow cytometry (FCM)

## Immunogen

Recombinant protein of human WWOX

## Isotype

Rabbit IgG

## Storage Buffer

Supplied in PBS (pH 7.4) containing 50% glycerol, and 0.02% sodium azide.

## Storage

Store at -20 °C for one year.

## Recommended Dilutions

Western Blotting (WB): 1:1,000-1:5,000

Flow Cytometry (FCM): 1:2,000

Immunocytochemistry (IC): 1:100-1:1,000

---

### SUPPORT

SUPPORT@GENUINBIOTECH.COM  
TEL: +1-540-855-7041

### ORDERS

SALES@GENUINBIOTECH.COM  
FAX: +1-540-855-7041

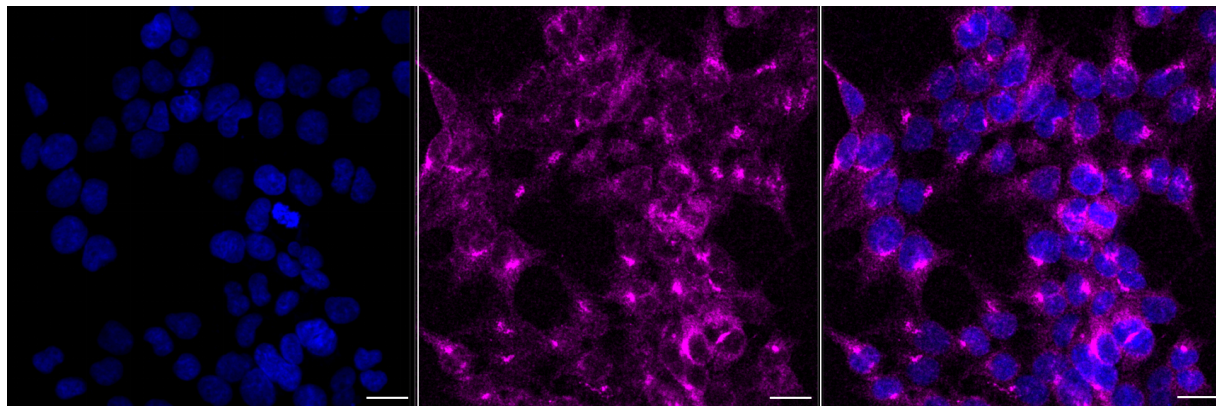
[WWW.GENUINBIOTECH.COM](http://WWW.GENUINBIOTECH.COM)

## KD-Validated Anti-WWOX Rabbit Monoclonal Antibody

PAGE 2

**Note:** This product is for research use only.

### Validation Data



Copyright ©2025 Genuin Biotechnologies LLC

Immunocytochemical staining of HeLa cells with anti-WWOX antibody (Cat#65666, 1:1,000) . Nuclei were stained blue with DAPI; WWOX was stained magenta with Alexa Fluor® 647. Images were taken using Leica stellaris 5. Protein abundance based on laser Intensity and smart gain: Medium. Scale bar, 20  $\mu$ m.

---

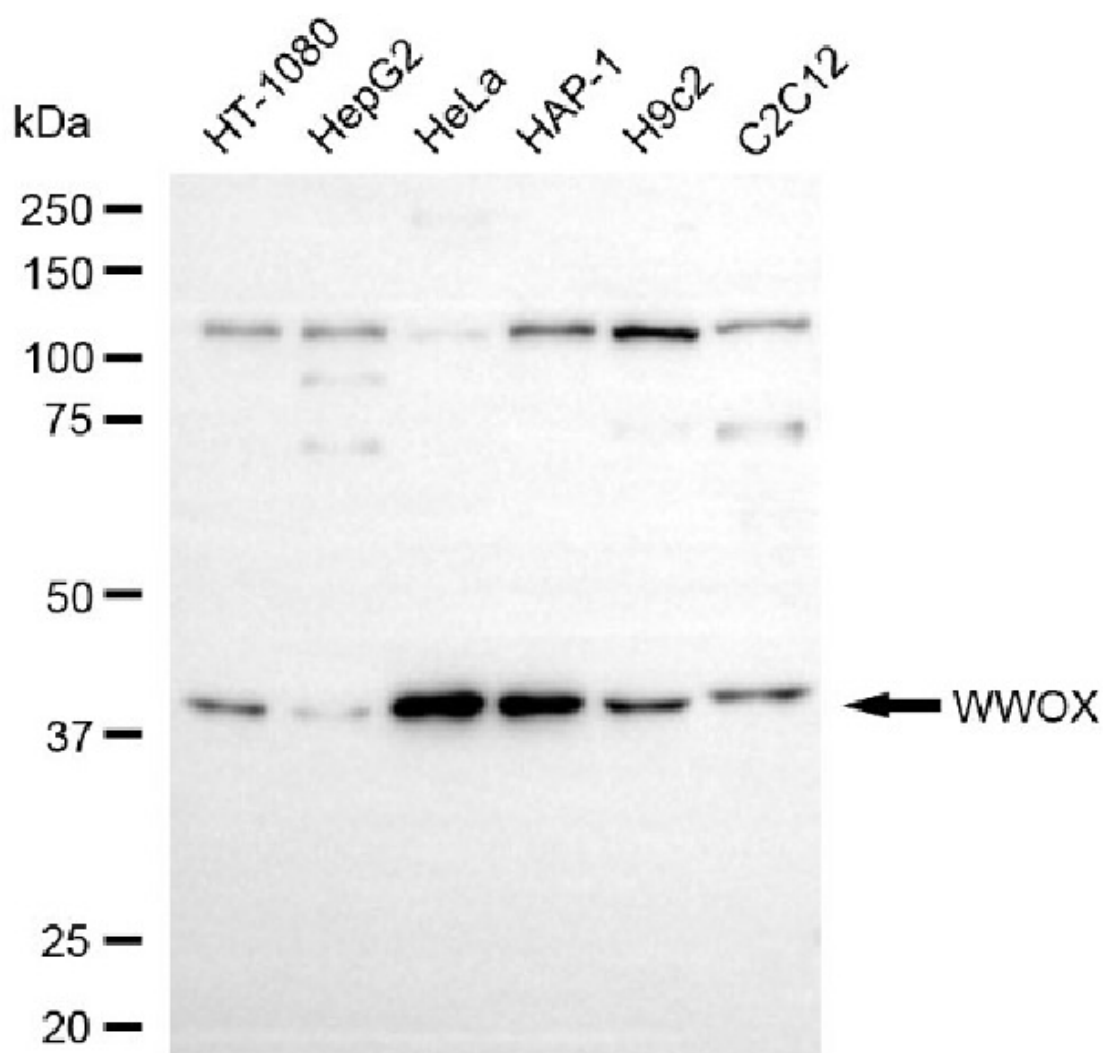
#### SUPPORT

SUPPORT@GENUINBIOTECH.COM  
TEL: +1-540-855-7041

#### ORDERS

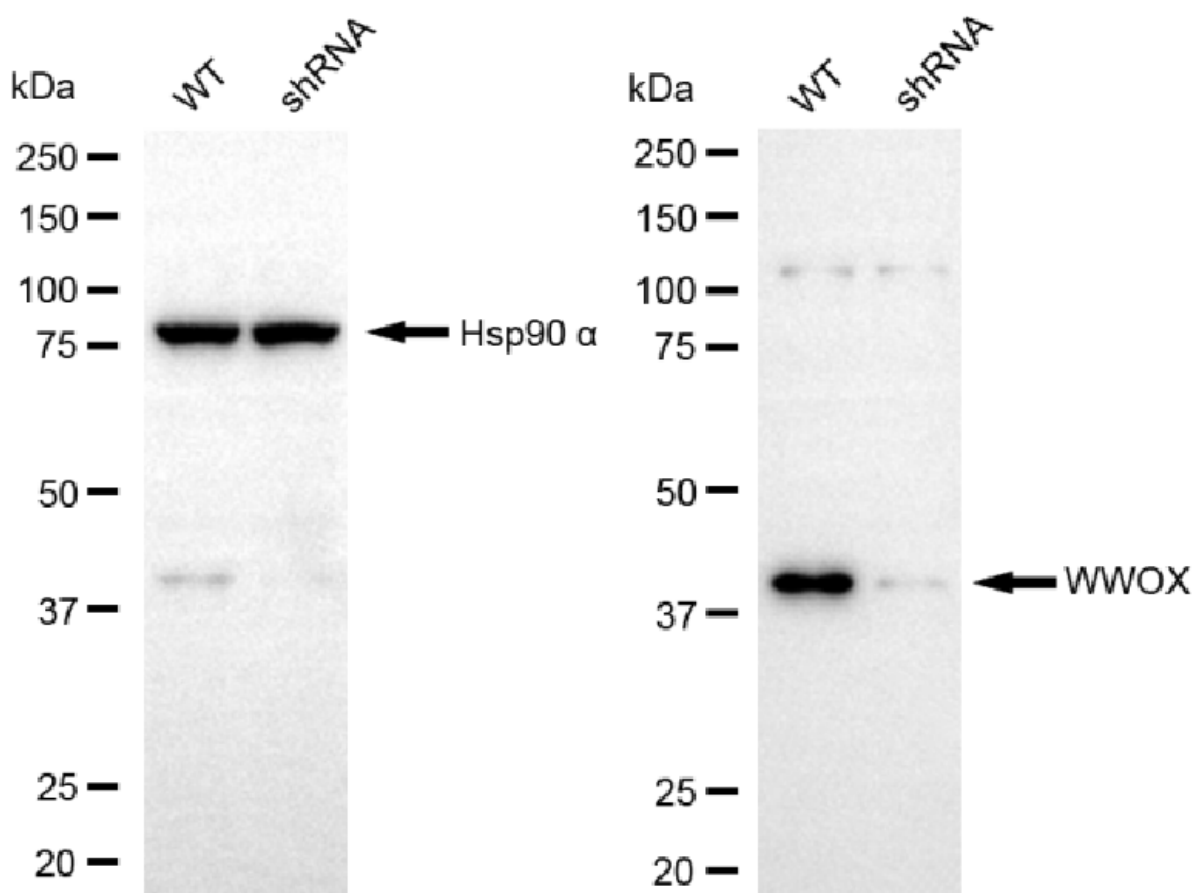
SALES@GENUINBIOTECH.COM  
FAX: +1-540-855-7041

[WWW.GENUINBIOTECH.COM](http://WWW.GENUINBIOTECH.COM)

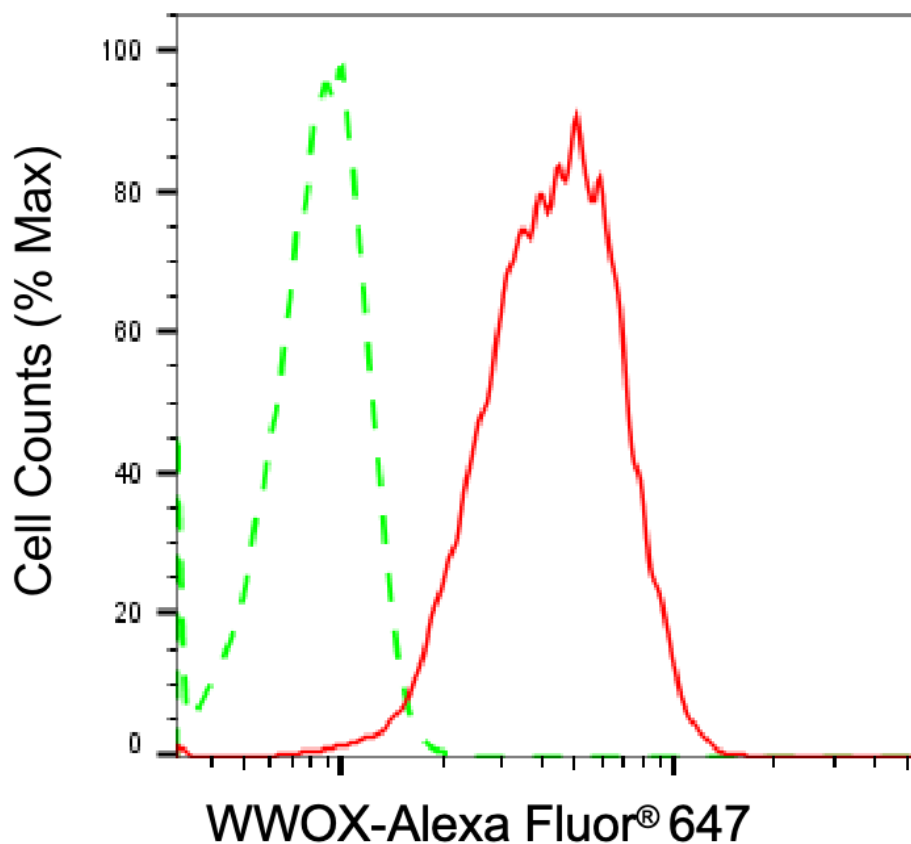


Copyright ©2025 Genuin Biotechnologies LLC

Western blotting analysis using anti-WWOX antibody (Cat#65666). Total cell lysates (30 µg) from various cell lines were loaded and separated by SDS-PAGE. The blot was incubated with anti-WWOX antibody (Cat#65666, 1:5,000) and HRP-conjugated goat anti-rabbit secondary antibody (Cat#201, 1:20,000) respectively. Image was developed using NaQ™ ECL Substrate Kit (Cat#716).



Western blotting analysis using anti-WWOX antibody (Cat#65666). WWOX expression in wild-type (WT) and WWOX shRNA knockdown (KD) HeLa cells with 20  $\mu$ g of total cell lysates. Hsp90  $\alpha$  serves as a loading control. The blot was incubated with anti-WWOX antibody (Cat#65666, 1:5,000) and HRP-conjugated goat anti-rabbit secondary antibody (Cat#201, 1:20,000) respectively. Image was developed using NaQ™ ECL Substrate Kit (Cat#716).



Copyright ©2025 Genuin Biotechnologies LLC

Flow cytometric analysis of WWOX expression in HeLa cells using anti-WWOX antibody (Cat#65666, 1:2,000). Green, isotype control; red, WWOX.