

# KD-Validated Anti-YTHDC2 Rabbit Monoclonal Antibody



**Catalog #: 65667**

## Aliases

YTHDC2; YTH N6-Methyladenosine RNA Binding Protein C2; 3'-5' RNA Helicase YTHDC2; YTH Domain Containing 2; DKFZp564A186; FLJ10053; FLJ2194; HYTHDC2; Probable ATP-Dependent RNA Helicase YTHDC2; CsA-Associated Helicase-Like Protein; YTH Domain-Containing Protein 2; EC 3.6.4.13; EC 3.6.1; CAHL

## Background

Gene Name: Ythdc2

NCBI Gene Entry: [64848](#)

UniProt Entry: [Q9H6S0](#)

## Application Information

Molecular Weight: Predicted, 161 kDa; observed, 160 kDa

Clonality: Rabbit monoclonal antibody

Clone ID: 25GB4785

Species Reactivity: Human, mouse, rat

Applications Tested: Western blotting (WB), flow cytometry (FCM)

## Immunogen

Recombinant protein of mouse YTHDC2

## Isotype

Rabbit IgG

## Storage Buffer

Supplied in PBS (pH 7.4) containing 50% glycerol, and 0.02% sodium azide.

## Storage

Store at -20 °C for one year.

## Recommended Dilutions

Western Blotting (WB): 1:1,000-1:5,000

Flow Cytometry (FCM): 1:2,000

**Note:** This product is for research use only.

---

### SUPPORT

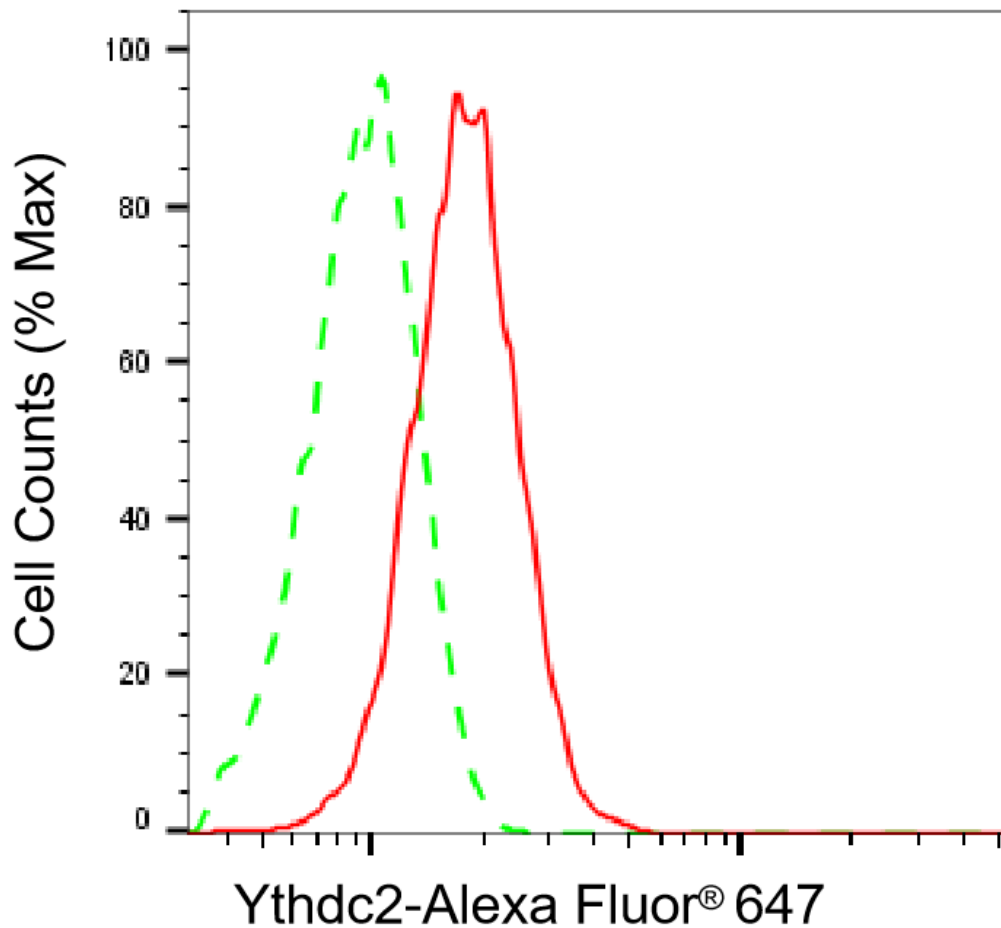
SUPPORT@GENUINBIOTECH.COM  
TEL: +1-540-855-7041

### ORDERS

SALES@GENUINBIOTECH.COM  
FAX: +1-540-855-7041

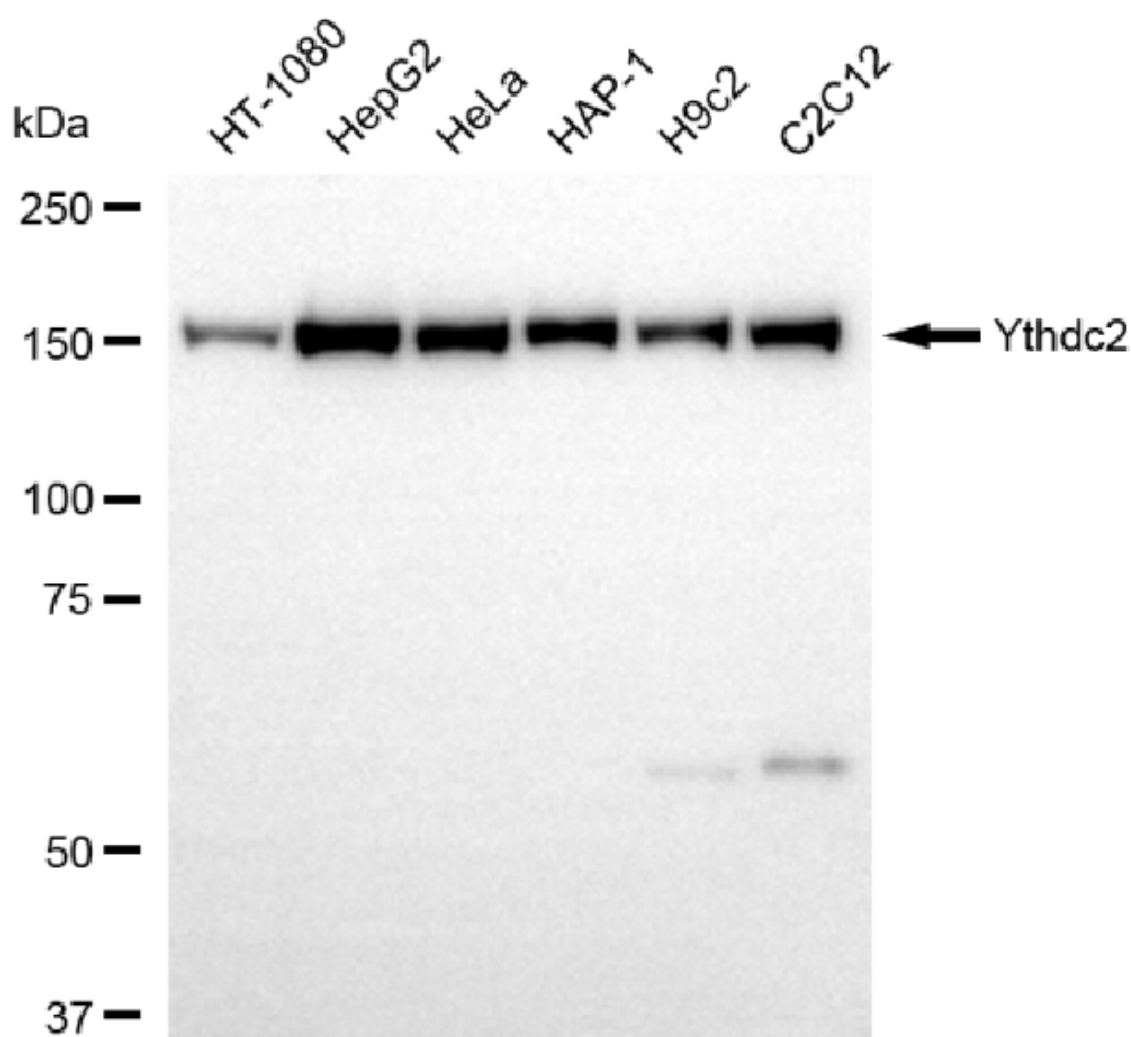
[WWW.GENUINBIOTECH.COM](http://WWW.GENUINBIOTECH.COM)

**Validation Data**



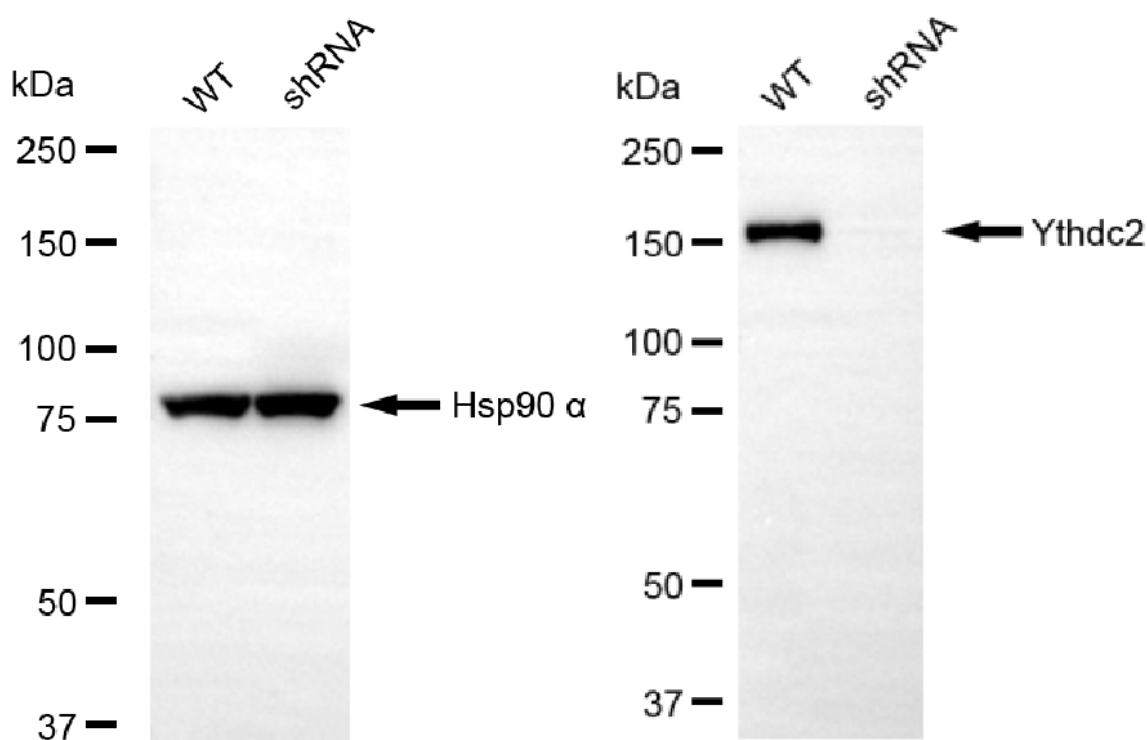
Copyright ©2025 Genuin Biotechnologies LLC

Flow cytometric analysis of Ythdc2 expression in HepG2 cells using anti-Ythdc2 antibody (Cat#65667, 1:2,000). Green, isotype control; red, Ythdc2.



Copyright ©2025 Genuin Biotechnologies LLC

Western blotting analysis using anti-Ythdc2 antibody (Cat#65667). Total cell lysates (30  $\mu$ g) from various cell lines were loaded and separated by SDS-PAGE. The blot was incubated with anti-Ythdc2 antibody (Cat#65667, 1:5,000) and HRP-conjugated goat anti-rabbit secondary antibody (Cat#201, 1:20,000) respectively. Image was developed using NaQ™ ECL Substrate Kit (Cat#716).



Copyright ©2025 Genuin Biotechnologies LLC

Western blotting analysis using anti-Ythdc2 antibody (Cat#65667). Ythdc2 expression in wild-type (WT) and YTHDC2 shRNA knockdown (KD) HeLa cells with 20 µg of total cell lysates. Hsp90 α serves as a loading control. The blot was incubated with anti-Ythdc2 antibody (Cat#65667, 1:5,000) and HRP-conjugated goat anti-rabbit secondary antibody (Cat#201, 1:20,000) respectively. Image was developed using NaQ™ ECL Substrate Kit (Cat#716).