

# KD-Validated Anti-YTHDF1 Rabbit Monoclonal Antibody



**Catalog #: 65668**

## Aliases

YTHDF1; YTH N6-Methyladenosine RNA Binding Protein F1; C20orf21; Dermatomyositis Associated With Cancer Putative Autoantigen 1; YTH N(6)-Methyladenosine RNA Binding Protein 1; YTH N6-Methyladenosine RNA Binding Protein 1; YTH Domain-Containing Family Protein 1; YTH Domain Family, Member 1; YTH Domain Family 1; FLJ20391; DACA-1; DF1; YTH Domain Family Protein 1

## Background

Gene Name: Ythdf1

NCBI Gene Entry: [54915](#)

UniProt Entry: [Q9BYJ9](#)

## Application Information

Molecular Weight: Predicted, 61 kDa; observed, 70 kDa

Clonality: Rabbit monoclonal antibody

Clone ID: 25GB4790

Species Reactivity: Human, mouse, rat

Applications Tested: Western blotting (WB), flow cytometry (FCM), immunocytochemistry (IC)

## Immunogen

Recombinant protein of mouse YTHDF1

## Isotype

Rabbit IgG

## Storage Buffer

Supplied in PBS (pH 7.4) containing 50% glycerol, and 0.02% sodium azide.

## Storage

Store at -20 °C for one year.

## Recommended Dilutions

Western Blotting (WB): 1:1,000-1:5,000

Flow Cytometry (FCM): 1:2,000

Immunocytochemistry (IC): 1:100-1:1,000

---

### SUPPORT

SUPPORT@GENUINBIOTECH.COM  
TEL: +1-540-855-7041

### ORDERS

SALES@GENUINBIOTECH.COM  
FAX: +1-540-855-7041

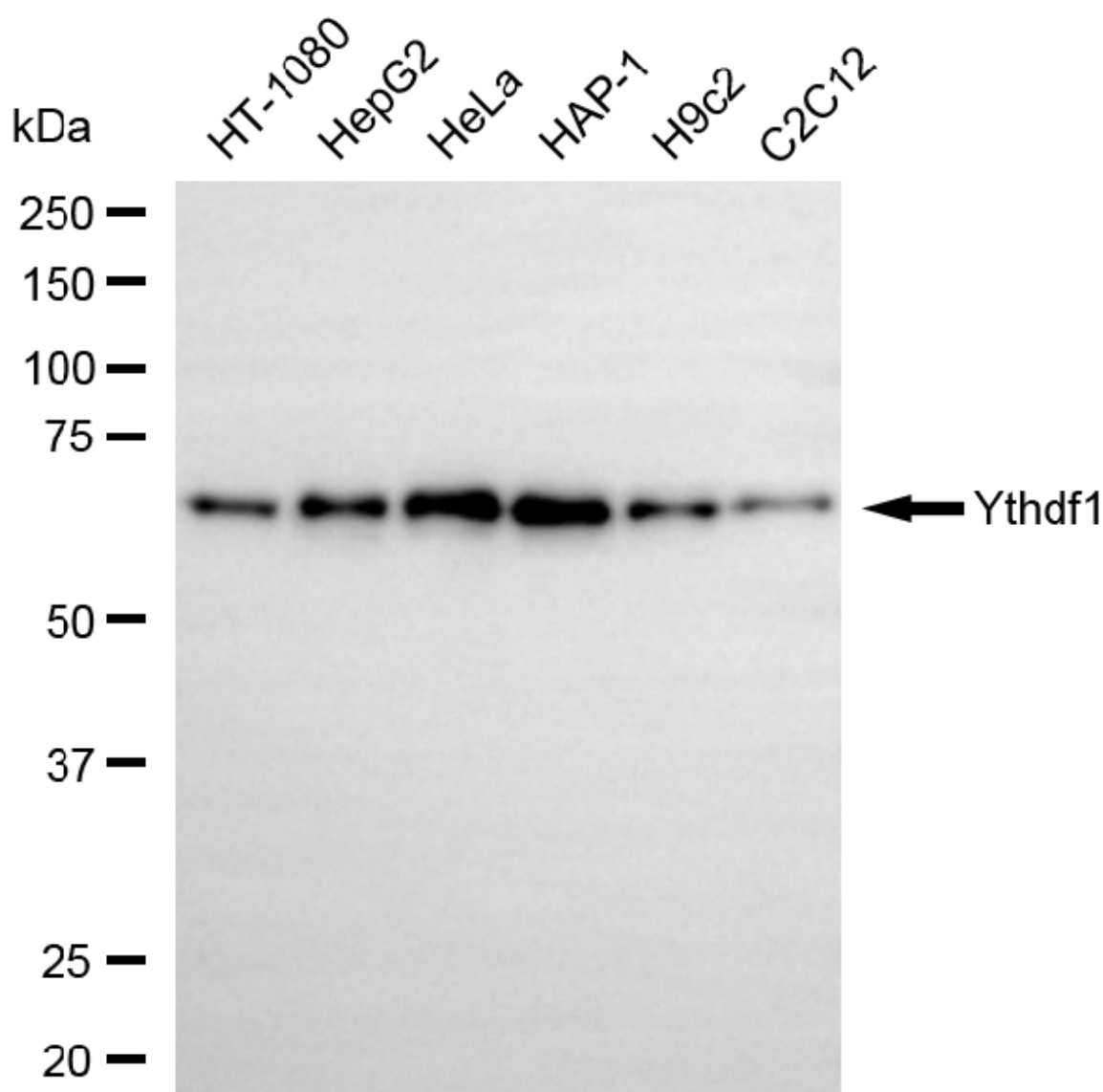
[WWW.GENUINBIOTECH.COM](http://WWW.GENUINBIOTECH.COM)

## KD-Validated Anti-YTHDF1 Rabbit Monoclonal Antibody

PAGE 2

**Note:** This product is for research use only.

### Validation Data



Copyright ©2025 Genuin Biotechnologies LLC

Western blotting analysis using anti-Ythdf1 antibody (Cat#65668). Total cell lysates (30 µg) from various cell lines were loaded and separated by SDS-PAGE. The blot was incubated with anti-Ythdf1 antibody (Cat#65668, 1:5,000) and HRP-conjugated goat anti-rabbit secondary antibody (Cat#201, 1:20,000) respectively. Image was developed using NaQ™ ECL Substrate Kit (Cat#716).

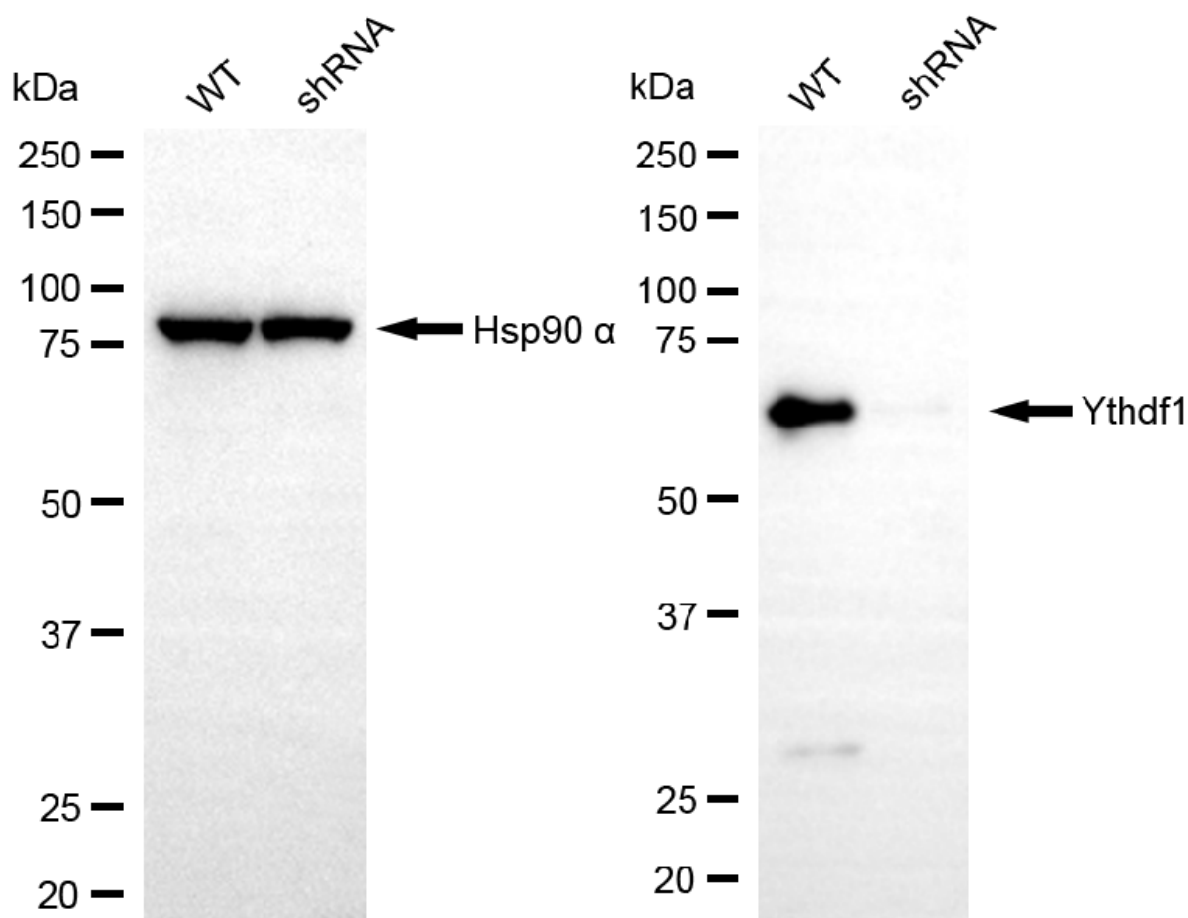
#### SUPPORT

SUPPORT@GENUINBIOTECH.COM  
TEL: +1-540-855-7041

#### ORDERS

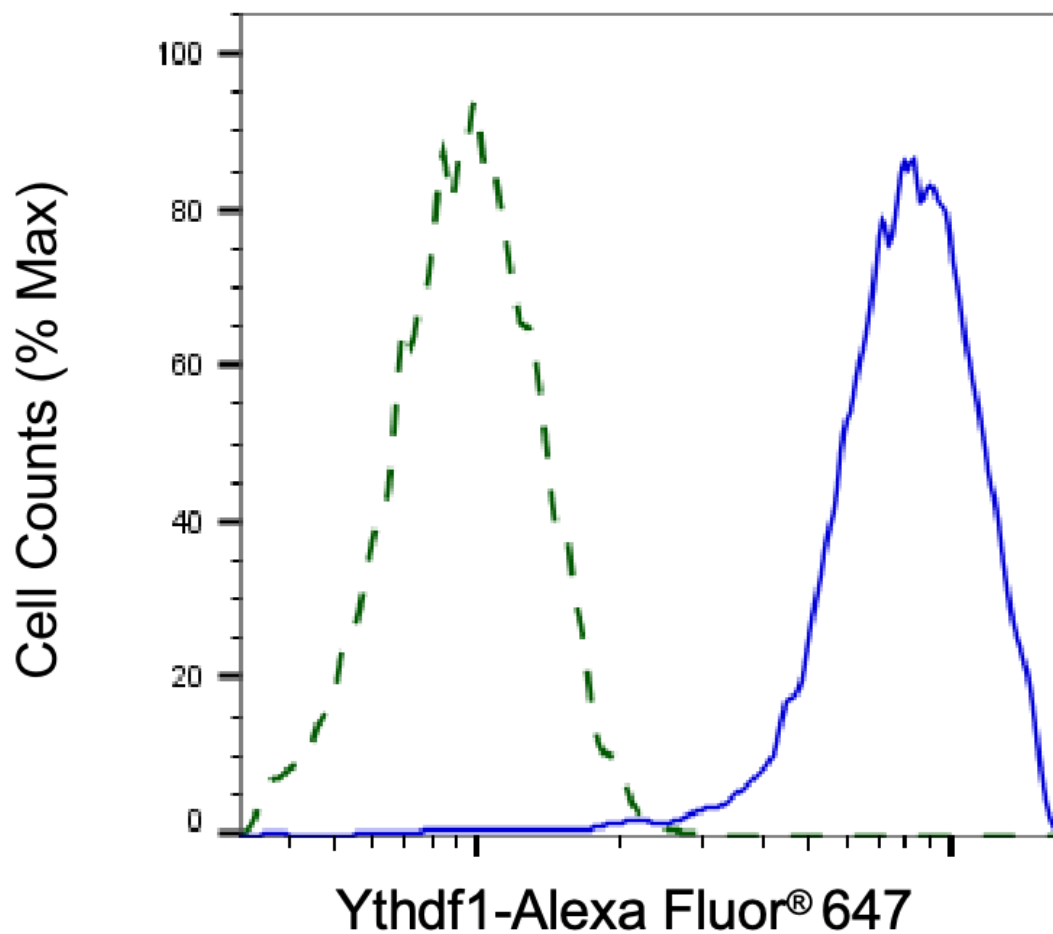
SALES@GENUINBIOTECH.COM  
FAX: +1-540-855-7041

[WWW.GENUINBIOTECH.COM](http://WWW.GENUINBIOTECH.COM)



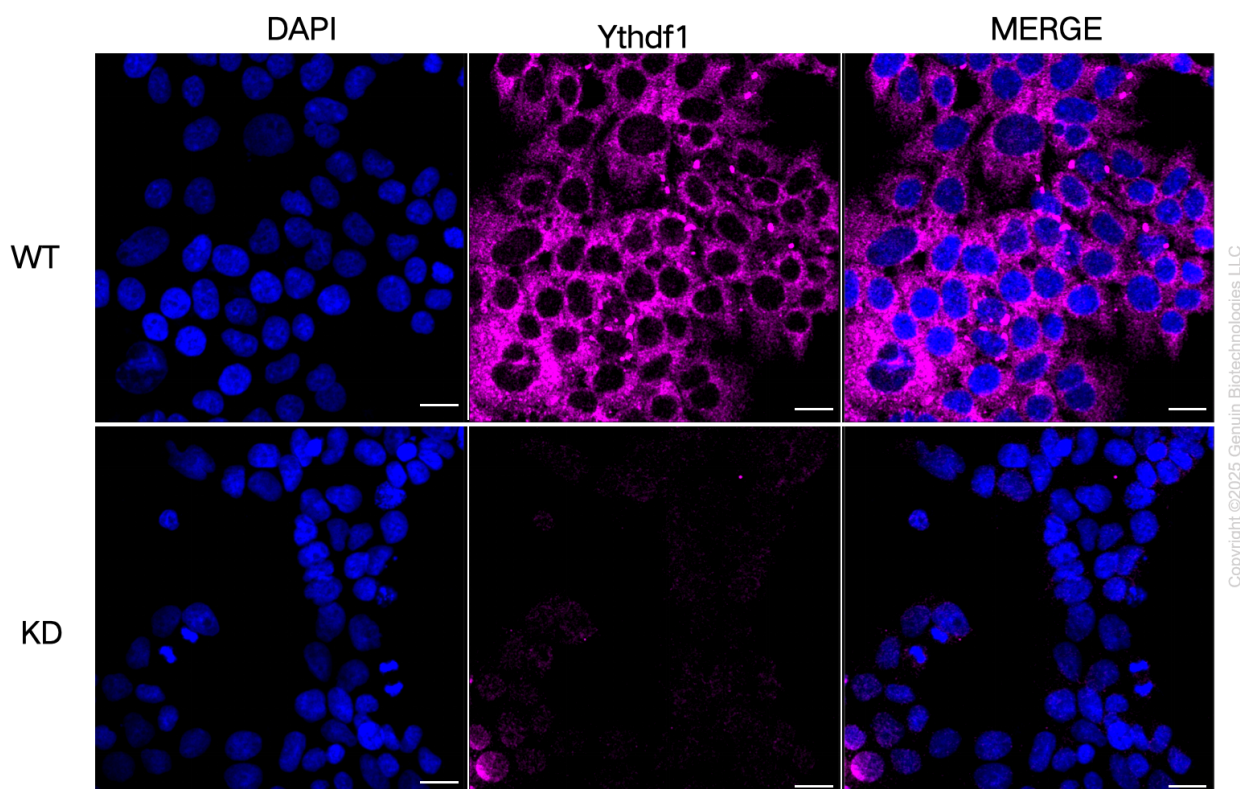
Copyright ©2025 Genuin Biotechnologies LLC

Western blotting analysis using anti-ythdf1 antibody (Cat#65668). YTHDF1 expression in wild-type (WT) and YTHDF1 shRNA knockdown (KD) HeLa cells with 20 µg of total cell lysates. Hsp90 α serves as a loading control. The blot was incubated with anti-ythdf1 antibody (Cat#65668, 1:5,000) and HRP-conjugated goat anti-rabbit secondary antibody (Cat#201, 1:20,000) respectively. Image was developed using NaQ™ ECL Substrate Kit (Cat#716).



Copyright ©2025 Genuin Biotechnologies LLC

Validation of Ythdf1 knockdown using flow cytometry. Wild-type(WT, Blue) and knockdown(KD, Green) HeLa cells were stained with anti-Ythdf1 antibody (Cat#65668, 1:2,000) and analyzed using BD flow cytometer.



Immunocytochemical staining of HeLa cells using anti-Ythdf1 antibody (Cat#65668, 1:1,000), Top panel: wild-type (WT); Bottom panel: Ythdf1 shRNA knockdown (KD). Nuclei were stained blue with DAPI; Acyl-CoA dehydrogenase short chain was stained magenta with Alexa Fluor® 647. Scale bar, 20  $\mu$ m.