

KD-Validated Anti-NFKBIE Rabbit Monoclonal Antibody



Catalog #: 65670

Aliases

NFKBIE; NFKB Inhibitor Epsilon; IKBE; NF-Kappa-B Inhibitor Epsilon; Nuclear Factor Of Kappa Light Polypeptide Gene Enhancer In B-Cells Inhibitor, Epsilon; I-Kappa-B-Epsilon; IkappaBepsilon; NF-Kappa-BIE; IkB-Epsilon; IkB-E

Background

Gene Name: NFKBIE

NCBI Gene Entry: [4794](#)

UniProt Entry: [O00221](#)

Application Information

Molecular Weight: Predicted, 53 kDa; observed, 42-48 kDa

Clonality: Rabbit monoclonal antibody

Clone ID: 25GB4800

Species Reactivity: Human

Applications Tested: Western blotting (WB), flow cytometry (FCM)

Immunogen

A synthesized peptide derived from human NFKBIE

Isotype

Rabbit IgG

Storage Buffer

Supplied in PBS (pH 7.4) containing 50% glycerol, and 0.02% sodium azide.

Storage

Store at -20 °C for one year.

Recommended Dilutions

Western Blotting (WB): 1:1,000-1:5,000

Flow Cytometry (FCM): 1:2,000

Note: This product is for research use only.

Validation Data

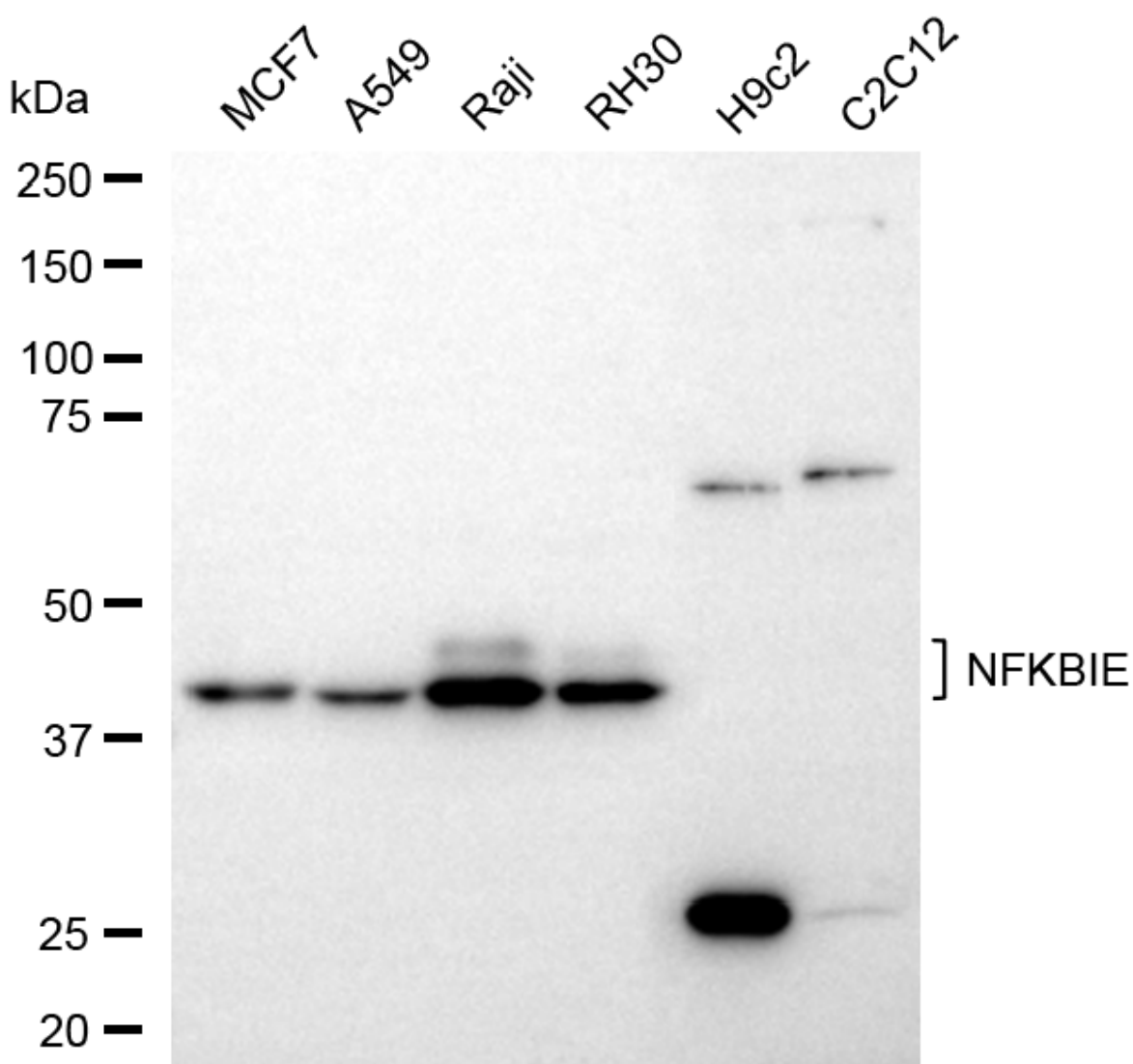
SUPPORT

SUPPORT@GENUINBIOTECH.COM
TEL: +1-540-855-7041

ORDERS

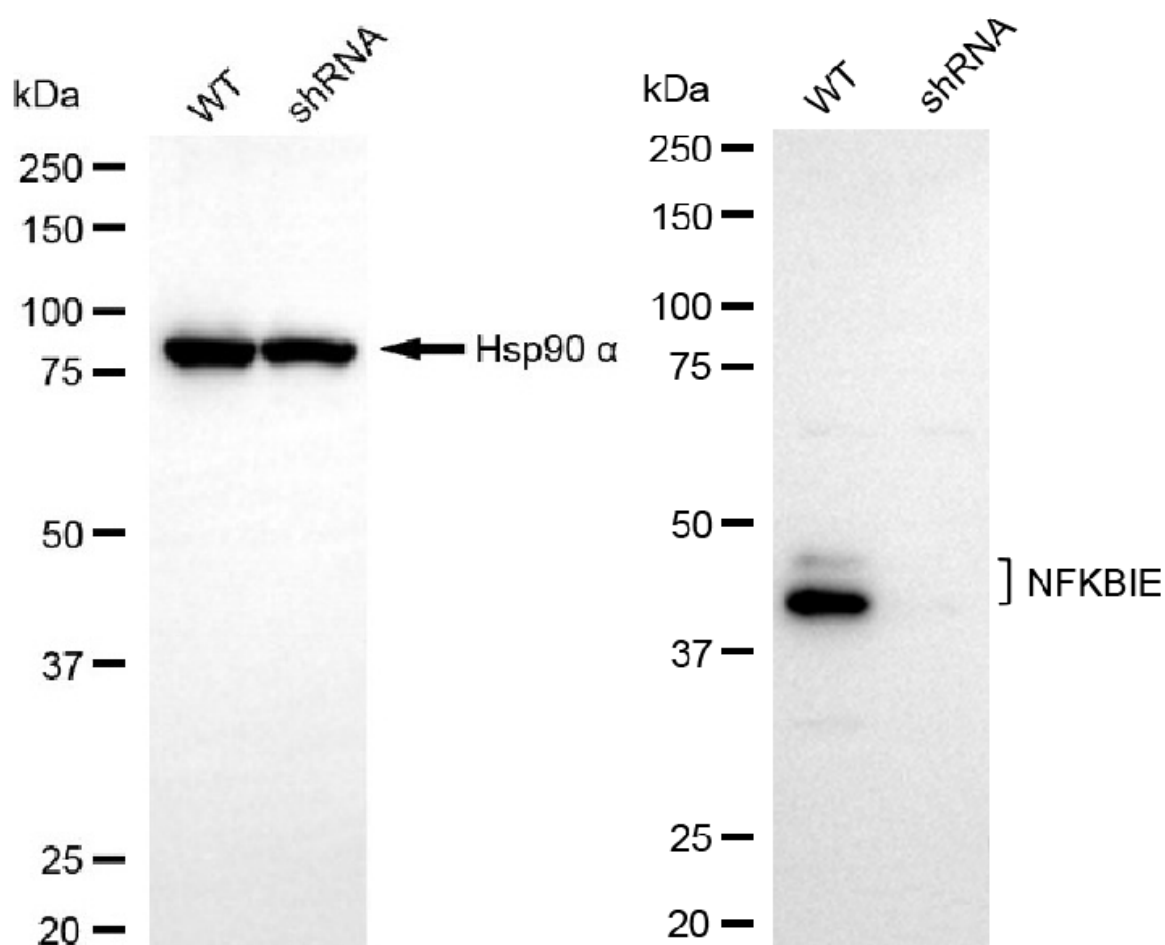
SALES@GENUINBIOTECH.COM
FAX: +1-540-855-7041

WWW.GENUINBIOTECH.COM



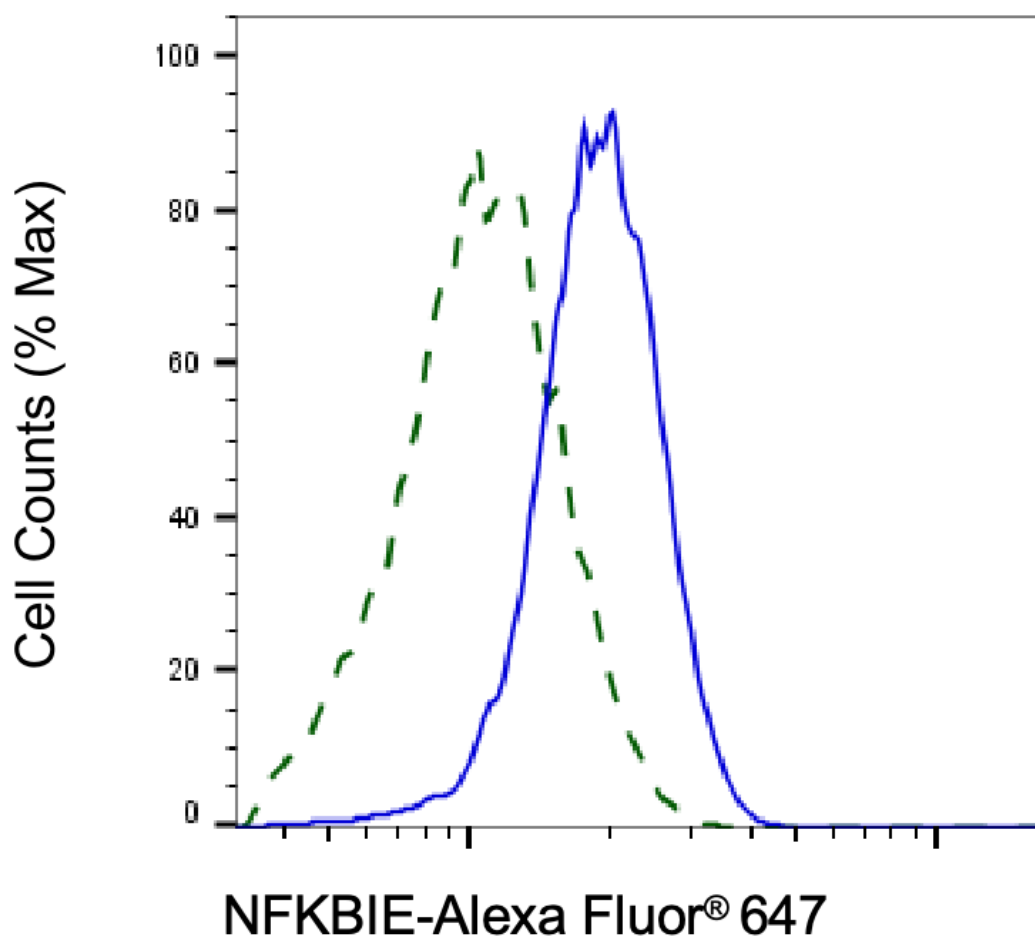
Copyright ©2025 Genuin Biotechnologies LLC

Western blotting analysis using anti-NFKBIE antibody (Cat#65670). Total cell lysates (30 µg) from various cell lines were loaded and separated by SDS-PAGE. The blot was incubated with anti-NFKBIE antibody (Cat#65670, 1:5,000) and HRP-conjugated goat anti-rabbit secondary antibody (Cat#201, 1:20,000) respectively. Image was developed using FeQ™ ECL Substrate Kit (Cat#226).



Copyright ©2025 Genuin Biotechnologies LLC

Western blotting analysis using anti-NFKBIE antibody (Cat#65670). NFKBIE expression in wild-type (WT) and NFKBIE shRNA knockdown (KD) HeLa cells with 30 µg of total cell lysates. Hsp90 α serves as a loading control. The blot was incubated with anti-NFKBIE antibody (Cat#65670, 1:5,000) and HRP-conjugated goat anti-rabbit secondary antibody (Cat#201, 1:20,000) respectively. Image was developed using FeQ™ ECL Substrate Kit (Cat#226).



Copyright ©2025 Genuin Biotechnologies LLC

Validation of NFKBIE knockdown using flow cytometry. Wild-type(WT, Blue) and knockdown(KD, Green) HeLa cells were stained with anti-NFKBIE antibody (Cat#65670, 1:2,000) and analyzed using BD flow cytometer.