

# KD-Validated Anti-EEF1A2 Rabbit Monoclonal Antibody



**Catalog #: 65671**

## Aliases

EEF1A2; Eukaryotic Translation Elongation Factor 1 Alpha 2; EEF1AL; HS1; STN; Eukaryotic Elongation Factor 1 A-2; Elongation Factor 1-Alpha 2; EF-1-Alpha-2; Statin-S1; STNL; Statin-Like; EEF1A-2; Statin; EIEE33; DEE33; MRD38; EF1A

## Background

Gene Name: EEF1A2

NCBI Gene Entry: [1917](#)

UniProt Entry: [Q05639](#)

## Application Information

Molecular Weight: Predicted, 50 kDa; observed, 48-50 kDa

Clonality: Rabbit monoclonal antibody

Clone ID: 25GB4655

Species Reactivity: Human

Applications Tested: Western blotting (WB), flow cytometry (FCM)

## Immunogen

A synthesized peptide derived from human EEF1A2

## Isotype

Rabbit IgG

## Storage Buffer

Supplied in PBS (pH 7.4) containing 50% glycerol, and 0.02% sodium azide.

## Storage

Store at -20 °C for one year.

## Recommended Dilutions

Western Blotting (WB): 1:1,000-1:5,000

Flow Cytometry (FCM): 1:2,000

**Note:** This product is for research use only.

## Validation Data

---

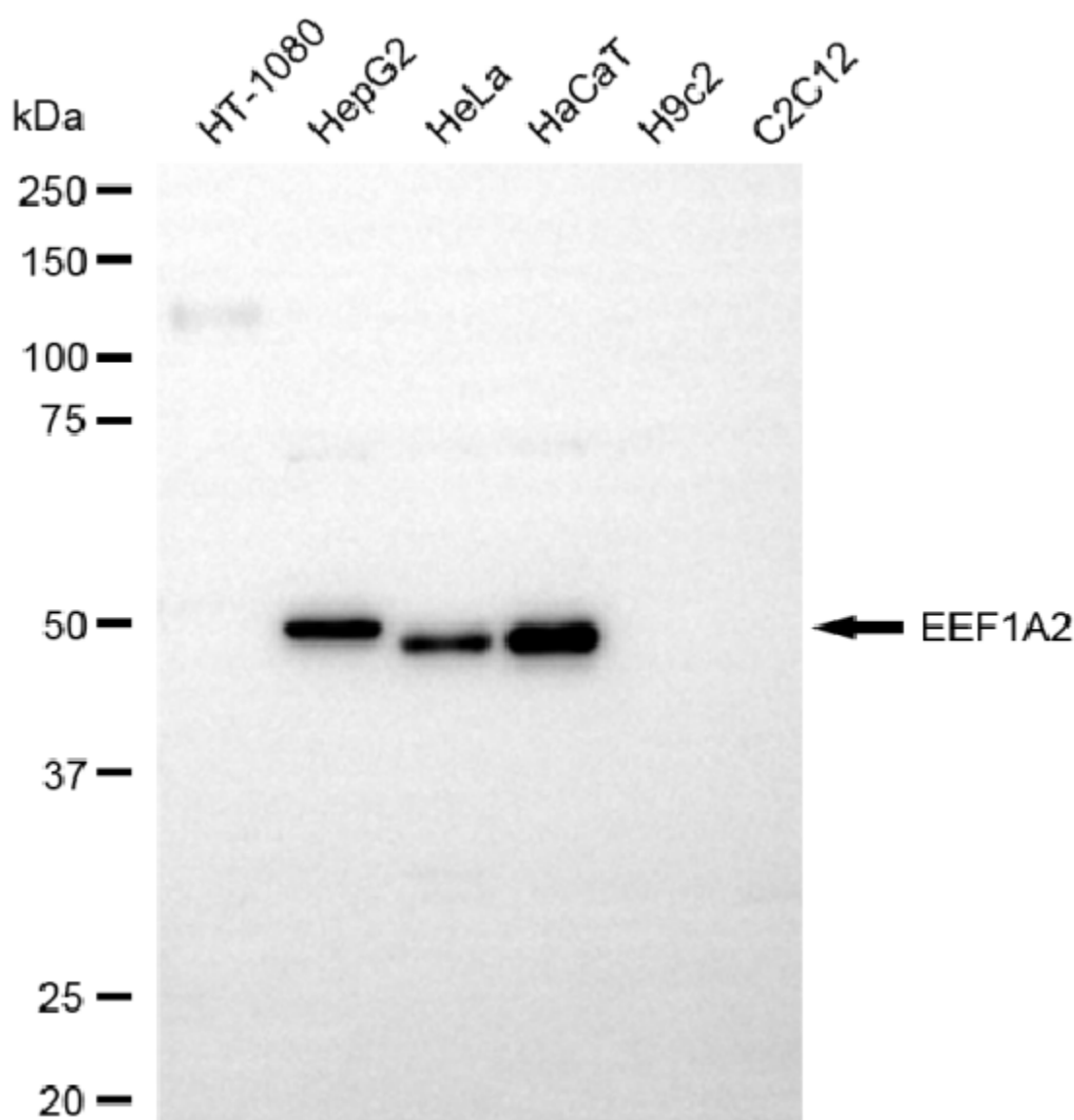
### SUPPORT

SUPPORT@GENUINBIOTECH.COM  
TEL: +1-540-855-7041

### ORDERS

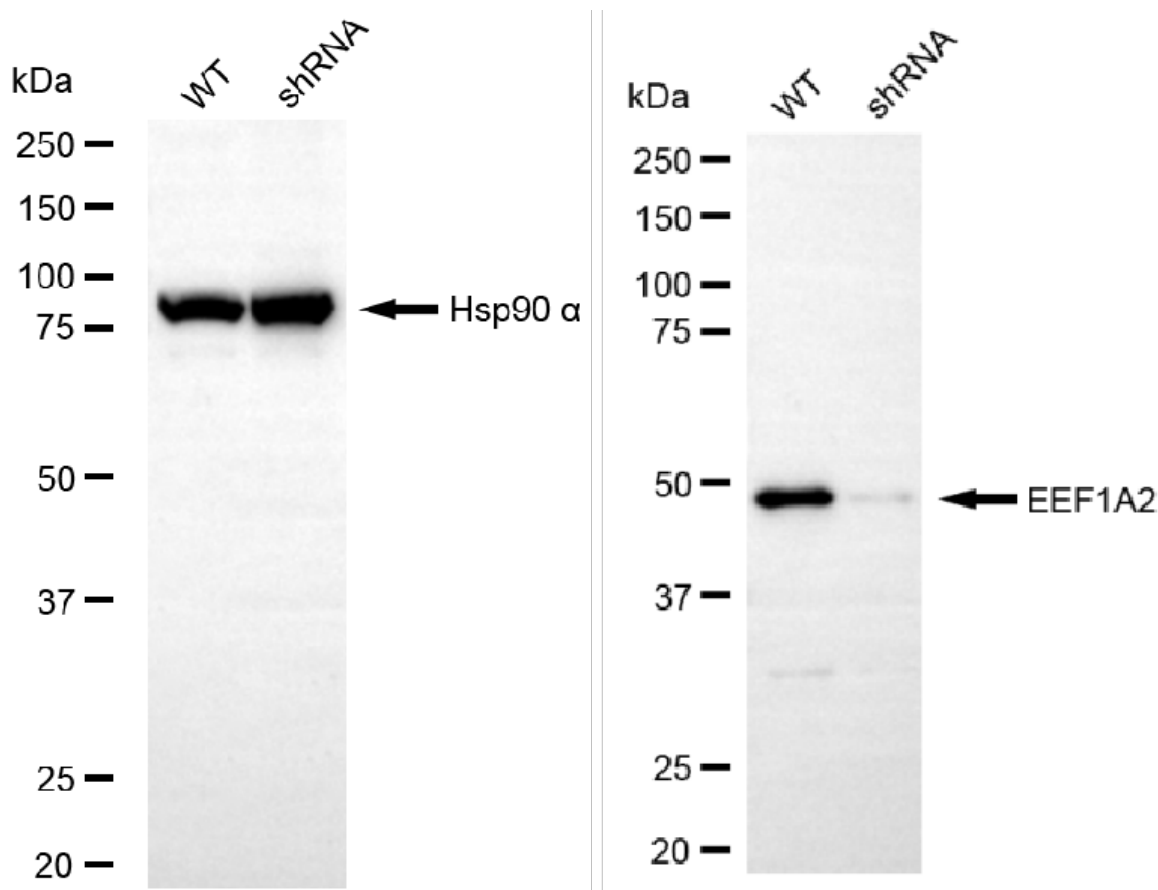
SALES@GENUINBIOTECH.COM  
FAX: +1-540-855-7041

[WWW.GENUINBIOTECH.COM](http://WWW.GENUINBIOTECH.COM)



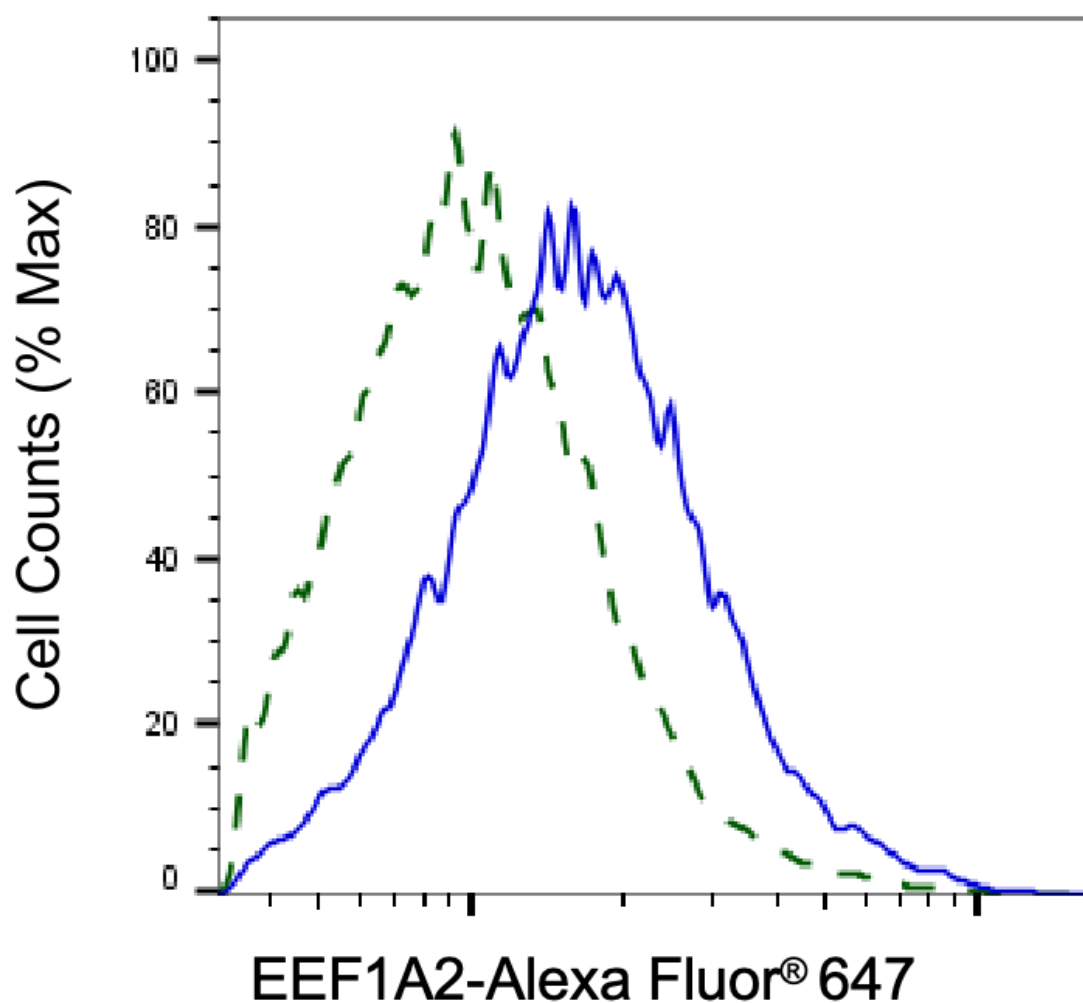
Copyright ©2025 Genuin Biotechnologies LLC

Western blotting analysis using anti-EEF1A2 antibody (Cat#65671). Total cell lysates (30 µg) from various cell lines were loaded and separated by SDS-PAGE. The blot was incubated with anti-EEF1A2 antibody (Cat#65671, 1:5,000) and HRP-conjugated goat anti-rabbit secondary antibody (Cat#201, 1:20,000) respectively. Image was developed using NaQ™ ECL Substrate Kit (Cat#716).



Copyright ©2025 Genuin Biotechnologies LLC

Western blotting analysis using anti-EEF1A2 antibody (Cat#65671). EEF1A2 expression in wild-type (WT) and EEF1A2 shRNA knockdown (KD) HeLa cells with 20 µg of total cell lysates. Hsp90 α serves as a loading control. The blot was incubated with anti-EEF1A2 antibody (Cat#65671, 1:5,000) and HRP-conjugated goat anti-rabbit secondary antibody (Cat#201, 1:20,000) respectively. Image was developed using NaQ™ ECL Substrate Kit (Cat#716).



Copyright ©2025 Genuin Biotechnologies LLC

Validation of EEF1A2 knockdown using flow cytometry. Wild-type(WT, Blue) and knockdown(KD, Green) HeLa cells were stained with anti-EEF1A2 antibody (Cat#65671, 1:2,000) and analyzed using BD flow cytometer.