

KD-Validated Anti-NUMB Rabbit Monoclonal Antibody



Catalog #: 65751

Aliases

Numb Homolog (Drosophila); Numb (Drosophila) Homolog; C14orf41; c14_5527; h-Numb; Protein Numb Homolog; S171; Protein S171; Chromosome 14 Open Reading Frame 41

Background

Gene Name: NUMB

NCBI Gene Entry: [8650](#)

UniProt Entry: [P49757](#)

Application Information

Molecular Weight: Predicted, 71 kDa, observed, 71 kDa

Clonality: Rabbit monoclonal antibody

Clone ID: 23GB1070

Species Reactivity: Human, mouse, rat

Applications Tested: Western blotting (WB), flow cytometry (FCM)

Immunogen

A synthesized peptide derived from human NUMB

Isotype

Rabbit IgG

Storage Buffer

Supplied in PBS (pH 7.4) containing 50% glycerol, and 0.02% sodium azide.

Storage

Store at -20 °C for one year.

Recommended Dilutions

Western Blotting (WB): 1:1,000-1:5,000

Flow Cytometry (FCM): 1:2,000

Note: This product is for research use only.

Validation Data

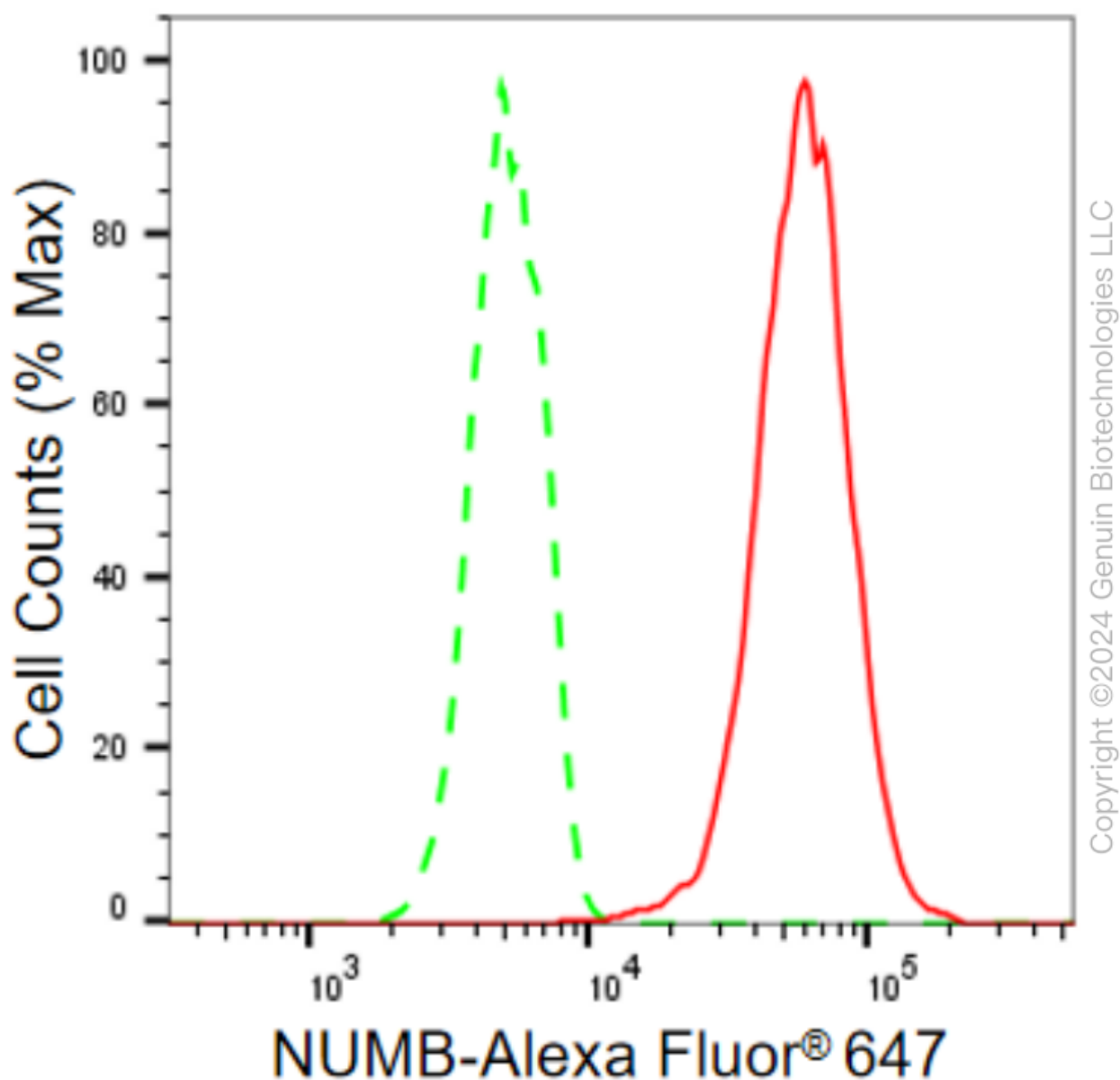
SUPPORT

SUPPORT@GENUINBIOTECH.COM
TEL: +1-540-855-7041

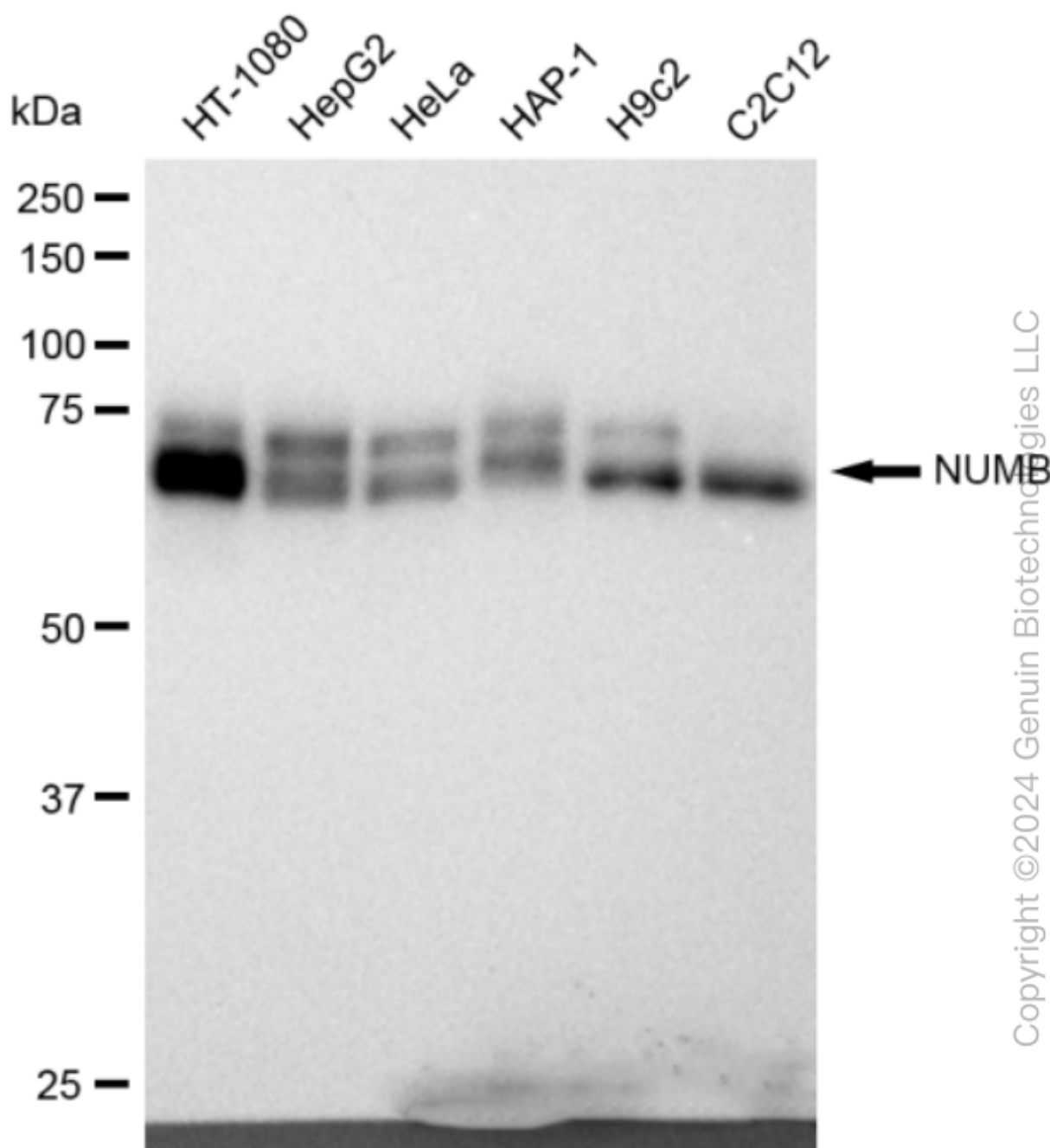
ORDERS

SALES@GENUINBIOTECH.COM
FAX: +1-540-855-7041

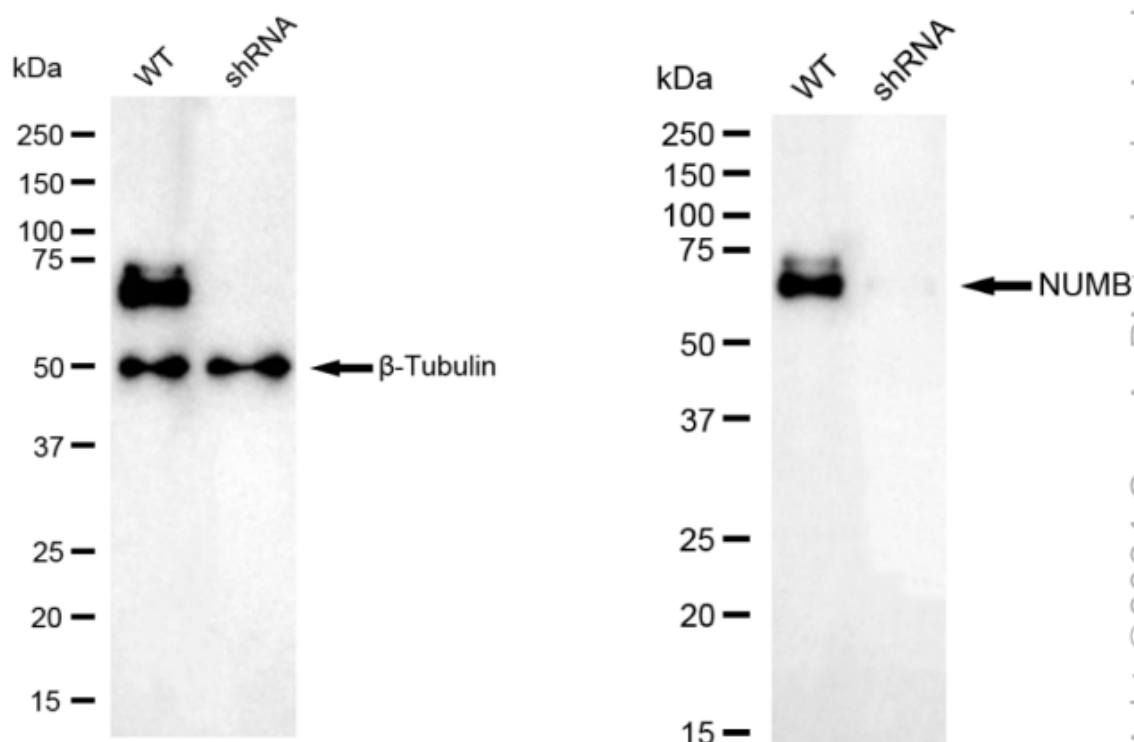
WWW.GENUINBIOTECH.COM



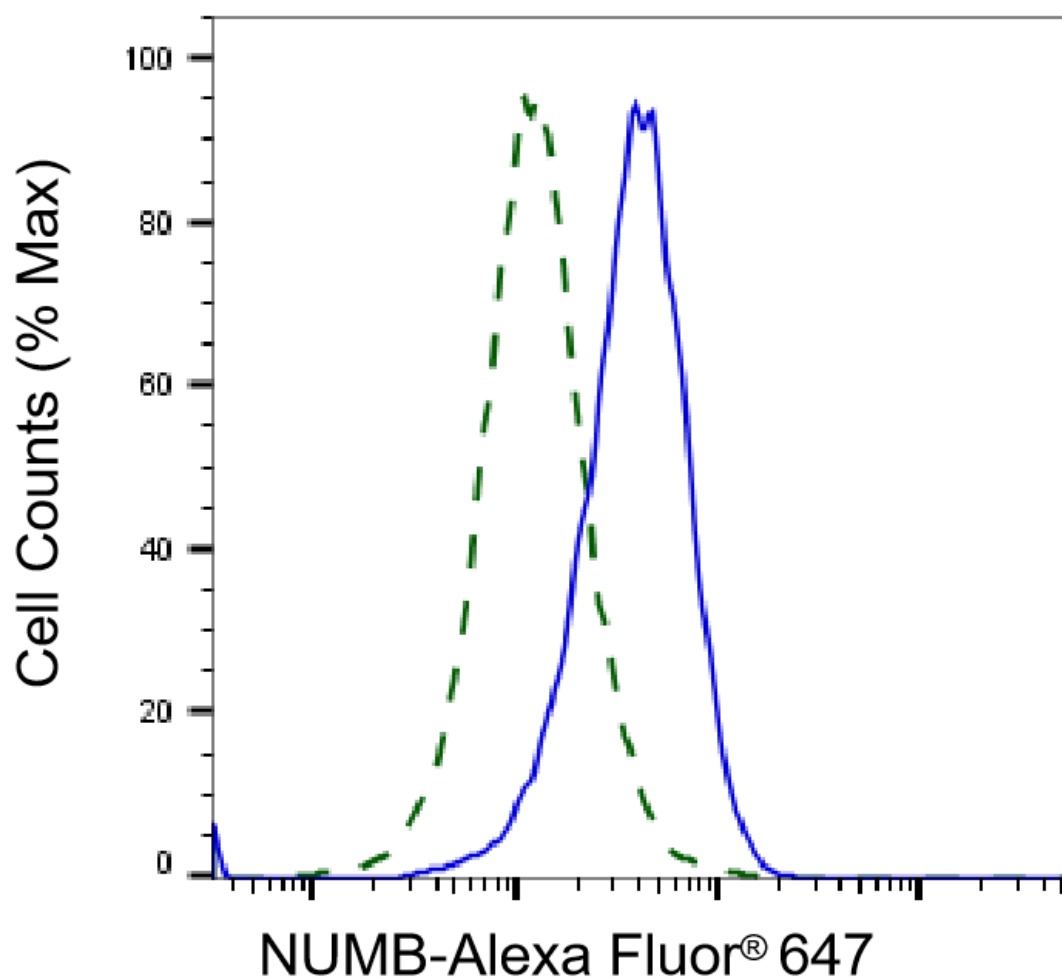
Flow cytometric analysis of NUMB expression in HT-1080 cells using NUMB antibody (Cat#65751, 1:2,000). Green, isotype control; red, NUMB.



Western blotting analysis using anti-NUMB antibody (Cat#65751). Total cell lysates (30 µg) from various cell lines were loaded and separated by SDS-PAGE. The blot was incubated with anti-NUMB antibody (Cat#65751, 1:5,000) and HRP-conjugated goat anti-rabbit secondary antibody (Cat#201, 1:50,000) respectively. Image was developed using FeQ™ ECL Substrate Kit (Cat#226).



Western blotting analysis using anti-NUMB antibody (Cat#65751). NUMB expression in wild type (WT) and NUMB shRNA knockdown (KD) HT-1080 cells with 30 µg of total cell lysates. β-Tubulin serves as a loading control. The blot was incubated with anti-NUMB antibody (Cat#65751, 1:5,000) and HRP-conjugated goat anti-rabbit secondary antibody (Cat#201, 1:20,000) respectively. Image was developed using FeQ™ ECL Substrate Kit (Cat#226).



Copyright ©2025 Genuin Biotechnologies LLC

Validation of NUMB knockdown using flow cytometry. Wild-type(WT, Blue) and knockdown(KD, Green) HT-1080 cells were stained with anti-NUMB antibody (Cat#65751, 1:2,000) and analyzed using BD flow cytometer.