

KD-Validated Anti-MRI1 Mouse Monoclonal Antibody



Catalog #: 65829

Aliases

MRI1; Methylthioribose-1-Phosphate Isomerase 1; MRDI; Mediator Of RhoA-Dependent Invasion; Ypr118w; MtnA; Translation Initiation Factor EIF-2B Subunit Alpha/Beta/Delta-Like Protein; S-Methyl-5-Thioribose-1-Phosphate Isomerase 1; Methylthioribose-1-Phosphate Isomerase; MTR-1-P Isomerase; EC 5.3.1.23; MGC3207; M1Pi; Methylthioribose-1-Phosphate Isomerase Homolog (S. Cerevisiae); Methylthioribose-1-Phosphate Isomerase Homolog; S-Methyl-5-Thioribose-1-Phosphate Isomerase

Background

Gene Name: MRI1

NCBI Gene Entry: [84245](#)

UniProt Entry: [Q9BV20](#)

Application Information

Molecular Weight: Predicted, 39 kDa, observed, 41 kDa

Clonality: Mouse monoclonal antibody

Clone ID: 25GB5040

Species Reactivity: Human, mouse, rat

Applications Tested: Western blotting (WB), flow cytometry (FCM)

Immunogen

Recombinant protein of human MRI1

Isotype

Mouse IgG2b

Storage Buffer

Supplied in PBS (pH 7.4) containing 50% glycerol, and 0.02% sodium azide.

Storage

Store at -20 °C for one year.

Recommended Dilutions

Western Blotting (WB): 1:500-1:2,500

Flow Cytometry (FCM): 1:200-1:2,000

SUPPORT

SUPPORT@GENUINBIOTECH.COM
TEL: +1-540-855-7041

ORDERS

SALES@GENUINBIOTECH.COM
FAX: +1-540-855-7041

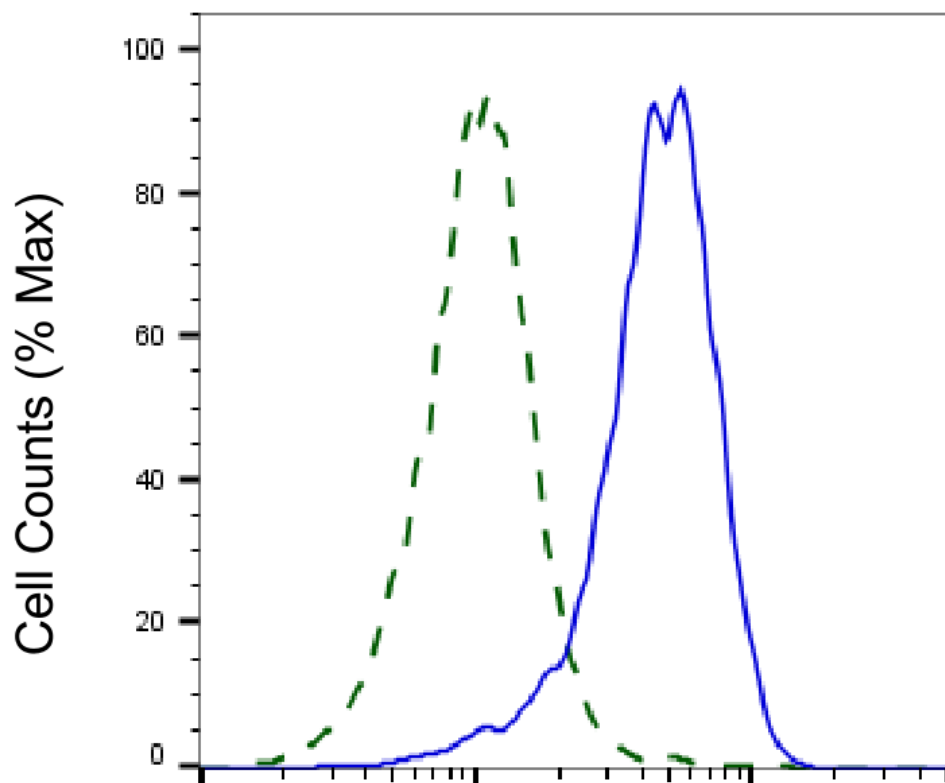
WWW.GENUINBIOTECH.COM

KD-Validated Anti-MRI1 Mouse Monoclonal Antibody

PAGE 2

Note: This product is for research use only.

Validation Data



Copyright ©2025 Genuin Biotechnologies LLC

MRI1-Alexa Fluor® 647

Validation of MRI1 knockdown using flow cytometry. Wild-type(WT, Blue) and knockdown(KD, Green) HepG2 cells were stained with anti-MRI1 antibody (Cat#65829, 1:2,000) and analyzed using BD flow cytometer.

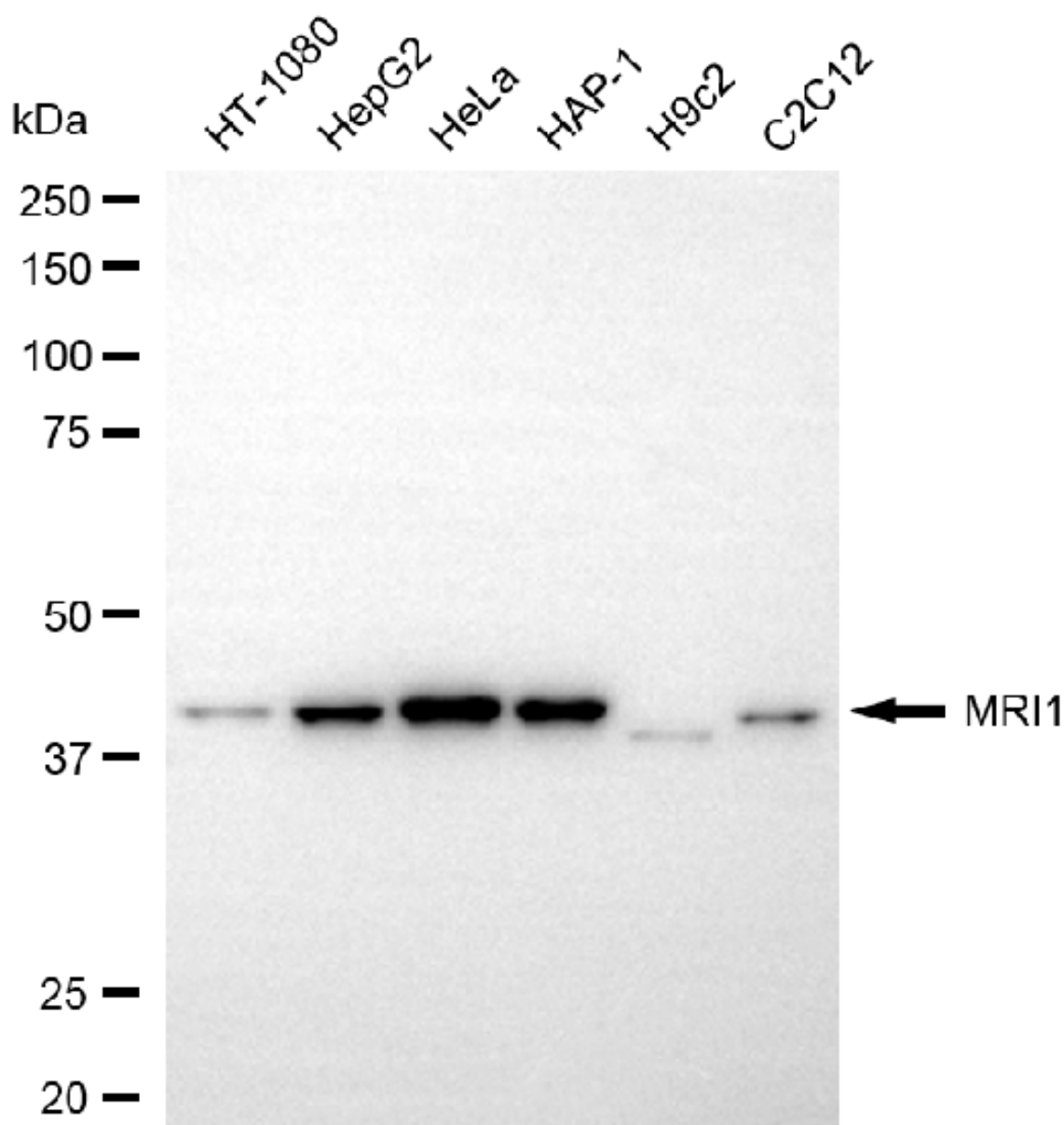
SUPPORT

SUPPORT@GENUINBIOTECH.COM
TEL: +1-540-855-7041

ORDERS

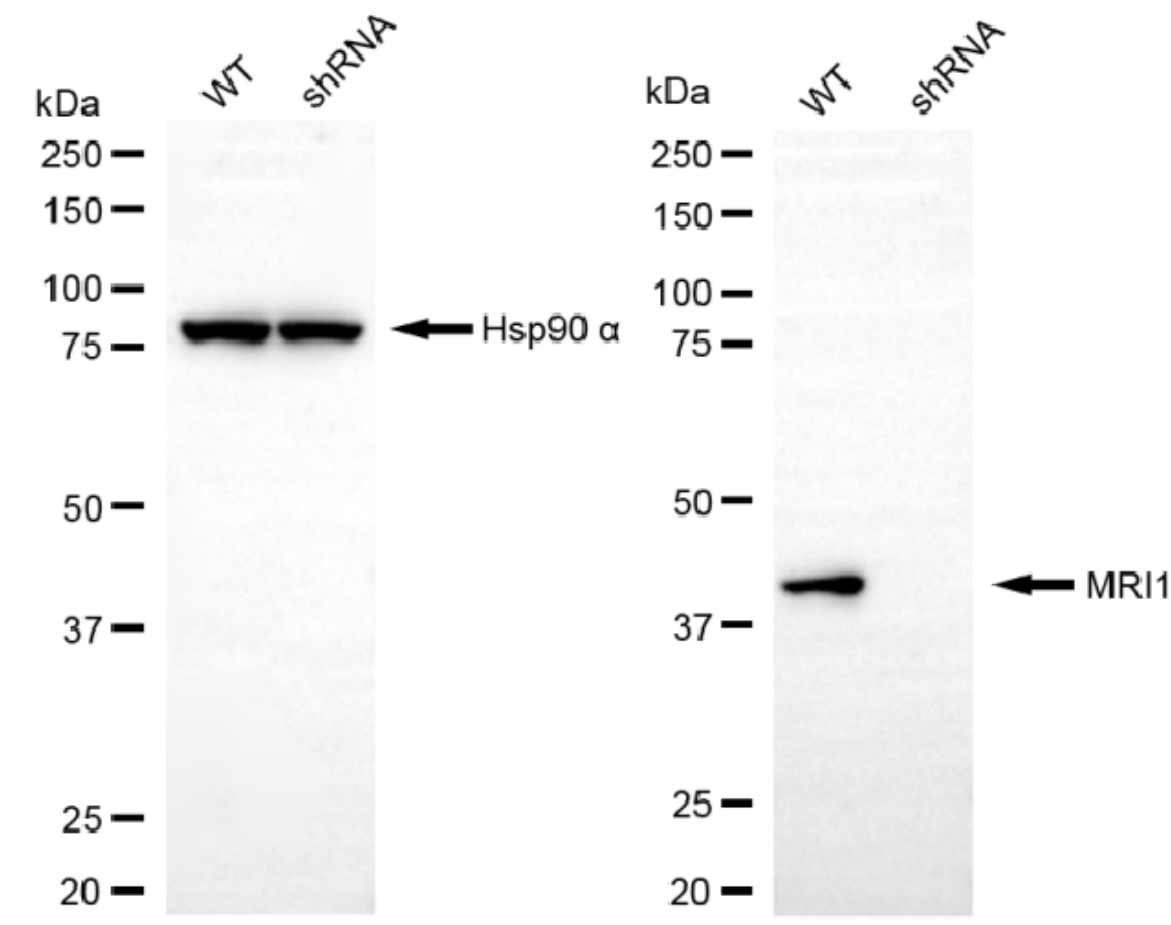
SALES@GENUINBIOTECH.COM
FAX: +1-540-855-7041

WWW.GENUINBIOTECH.COM



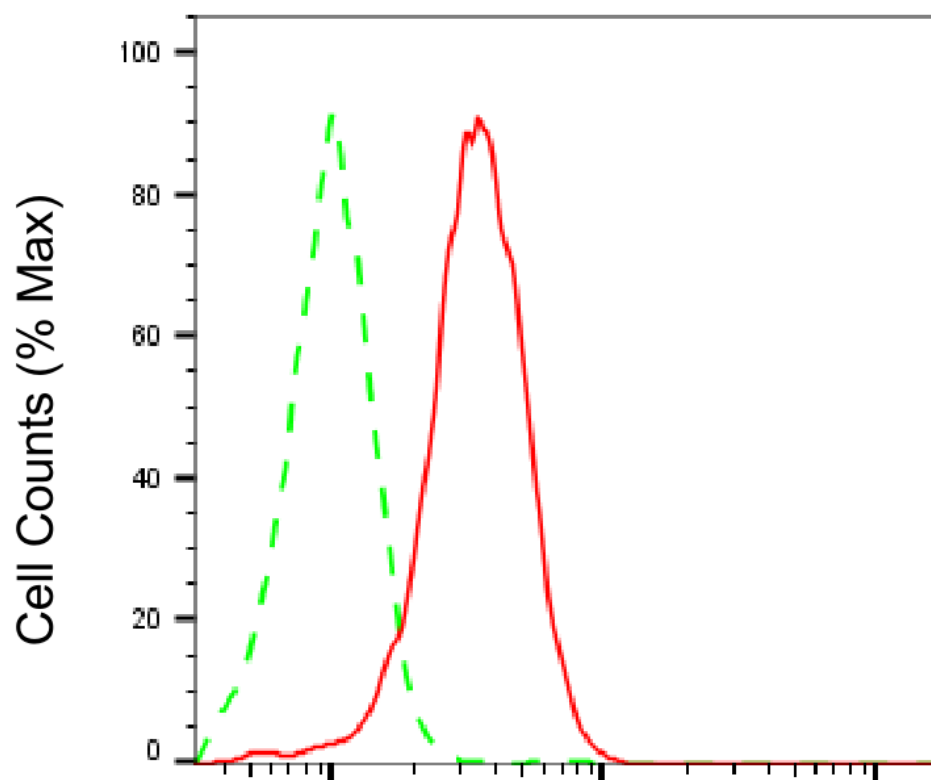
Copyright ©2025 Genuin Biotechnologies LLC

Western blotting analysis using anti-MRI1 antibody (Cat#65829). Total cell lysates (30 μ g) from various cell lines were loaded and separated by SDS-PAGE. The blot was incubated with anti-MRI1 antibody (Cat#65829, 1:2,500) and HRP-conjugated goat anti-mouse secondary antibody (Cat#101, 1:20,000) respectively. Image was developed using FeQ™ ECL Substrate Kit (Cat#226).



Copyright ©2025 Genuin Biotechnologies LLC

Western blotting analysis using anti-MRI1 antibody (Cat#65829). MRI1 expression in wild-type (WT) and MRI1 shRNA knockdown (KD) HepG2 cells with 20 µg of total cell lysates. Hsp90 α serves as a loading control. The blot was incubated with anti-MRI1 antibody (Cat#65829, 1:2,500) and HRP-conjugated goat anti-mouse secondary antibody (Cat#101, 1:20,000) respectively. Image was developed using NaQ™ ECL Substrate Kit (Cat#716).



MRI1-Alexa Fluor® 647

Flow cytometric analysis of MRI1 expression in HAP-1 cells using anti-MRI1 antibody (Cat#65829, 1:2,000). Green, isotype control; red, MRI1.