

# KD-Validated Anti-PYCR2 Mouse Monoclonal Antibody



**Catalog #: 65840**

## Aliases

PYCR2; Pyrroline-5-Carboxylate Reductase 2; P5CR2; Pyrroline-5-Carboxylate Reductase Family Member 2; P5C Reductase 2; EC 1.5.1.2; P5CR 2; HLD10

## Background

Gene Name: PYCR2

NCBI Gene Entry: [29920](#)

UniProt Entry: [Q96C36](#)

## Application Information

Molecular Weight: Predicted, 34 kDa, observed, 30-34 kDa

Clonality: Mouse monoclonal antibody

Clone ID: 25GB5125

Species Reactivity: Human, mouse, rat

Applications Tested: Western blotting (WB), flow cytometry (FCM)

## Immunogen

Recombinant protein of human PYCR2

## Isotype

Mouse IgG2a

## Storage Buffer

Supplied in PBS (pH 7.4) containing 50% glycerol, and 0.02% sodium azide.

## Storage

Store at -20 °C for one year.

## Recommended Dilutions

Western Blotting (WB): 1:500-1:2,500

Flow Cytometry (FCM): 1:200-1:2,000

**Note:** This product is for research use only.

## Validation Data

---

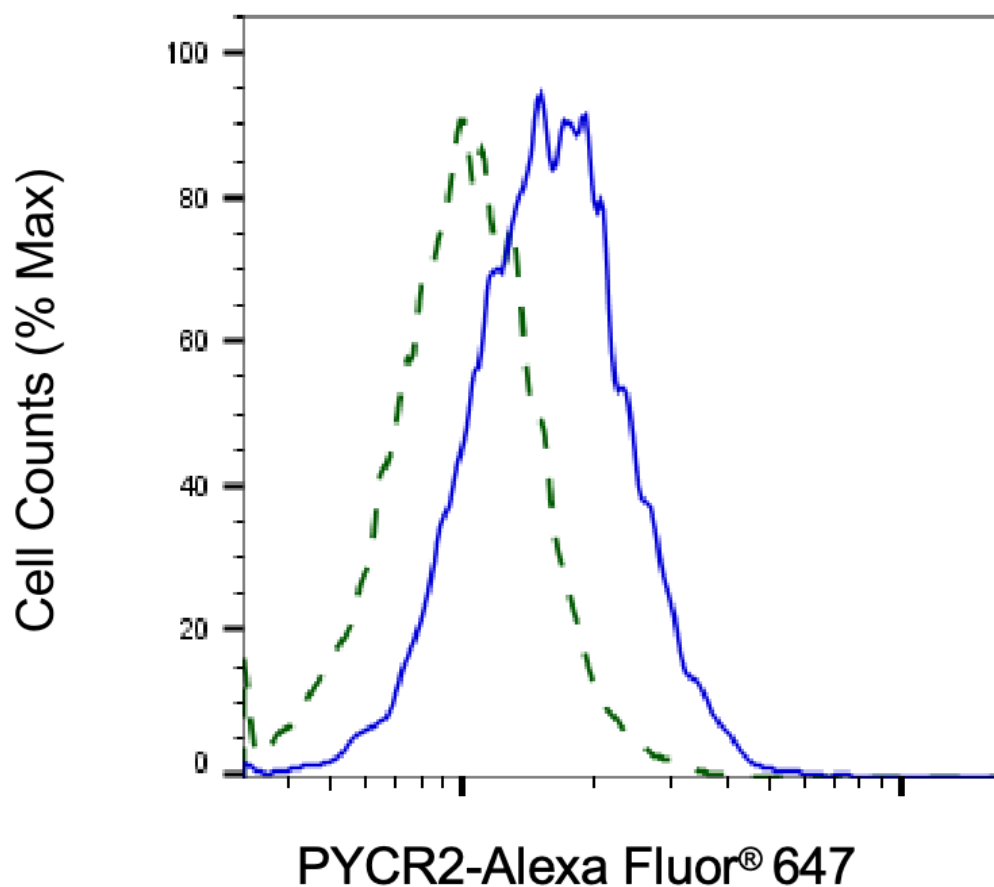
### SUPPORT

SUPPORT@GENUINBIOTECH.COM  
TEL: +1-540-855-7041

### ORDERS

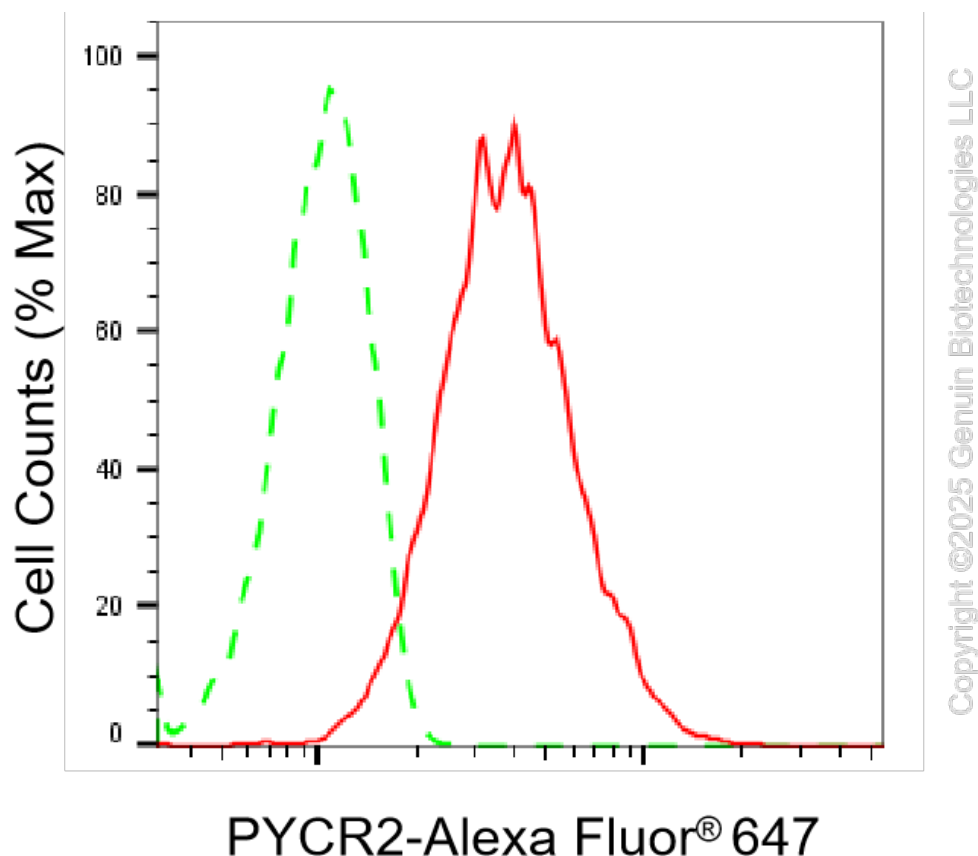
SALES@GENUINBIOTECH.COM  
FAX: +1-540-855-7041

[WWW.GENUINBIOTECH.COM](http://WWW.GENUINBIOTECH.COM)

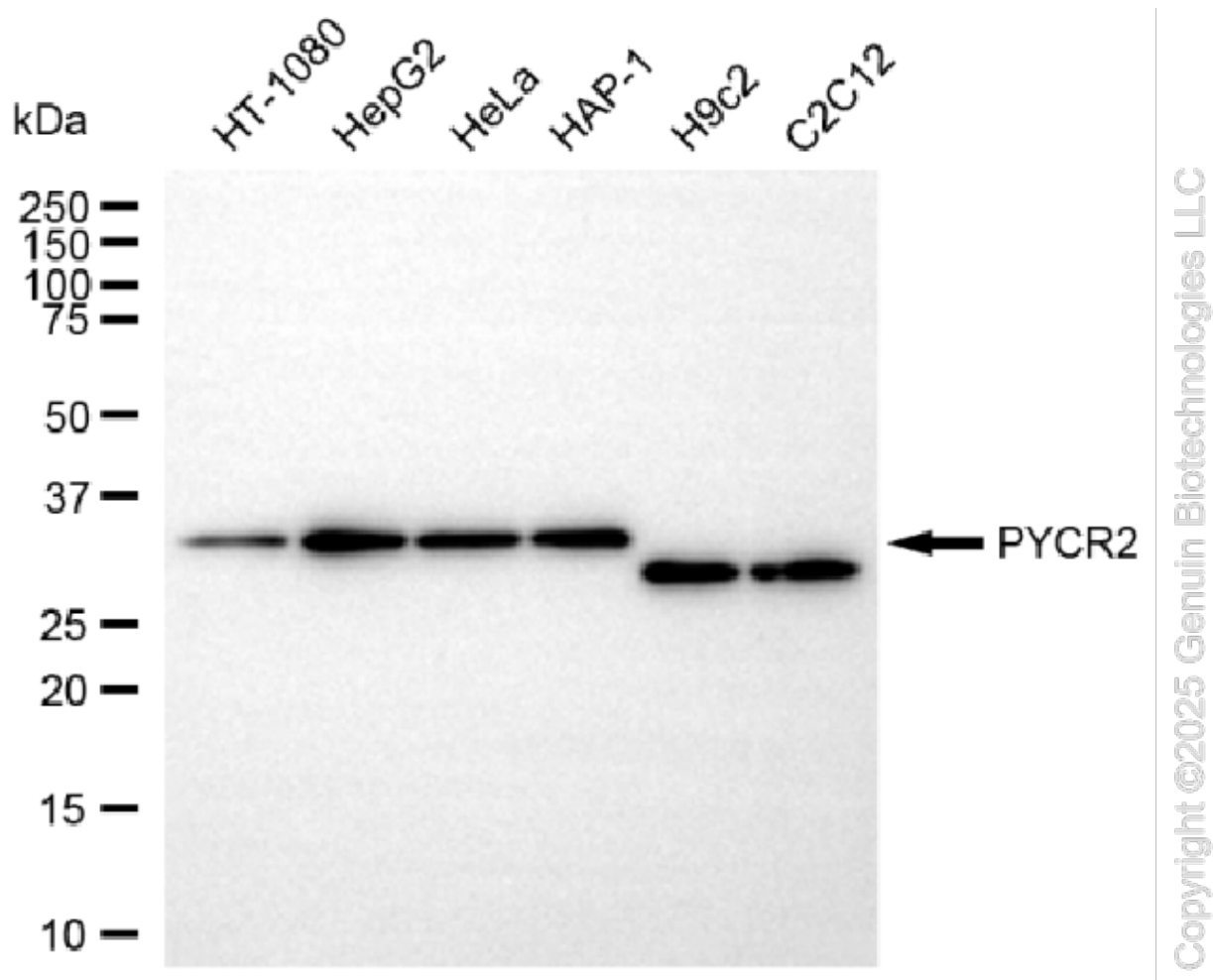


Copyright ©2025 Genuin Biotechnologies LLC

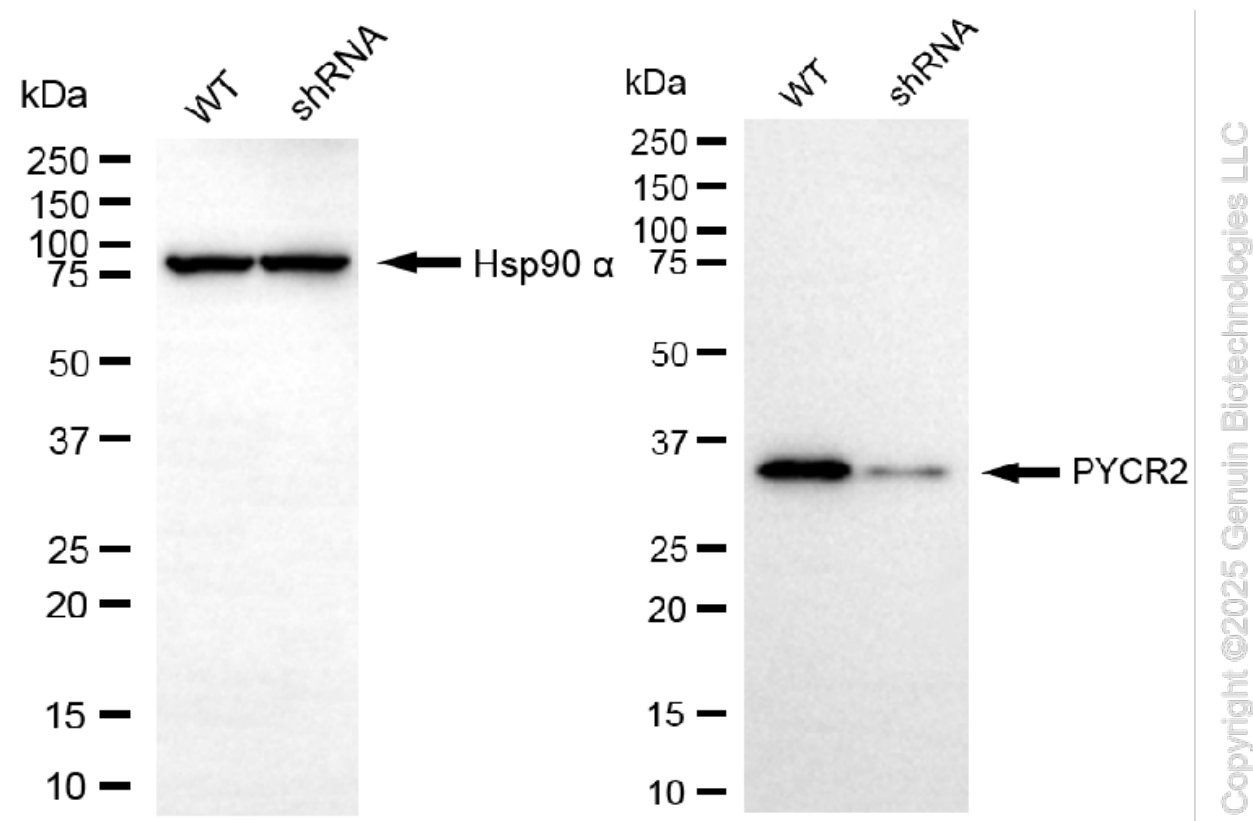
Validation of PYCR2 knockdown using flow cytometry. Wild-type(WT, Blue) and knockdown(KD, Green) HeLa cells were stained with anti-PYCR2 antibody (Cat#65840, 1:2,000) and analyzed using BD flow cytometer.



Flow cytometric analysis of PYCR2 expression in HepG2 cells using anti-PYCR2 antibody (Cat#65840, 1:2,000). Green, isotype control; red, PYCR2.



Western blotting analysis using anti-PYCR2 antibody (Cat#65840). Total cell lysates (30 µg) from various cell lines were loaded and separated by SDS-PAGE. The blot was incubated with anti-PYCR2 antibody (Cat#65840, 1:2,500) and HRP-conjugated goat anti-mouse secondary antibody (Cat#101, 1:20,000) respectively. Image was developed using NaQ™ ECL Substrate Kit (Cat#716).



Western blotting analysis using anti-PYCR2 antibody (Cat#65840). PYCR2 expression in wild-type (WT) and PYCR2 shRNA knockdown (KD) HeLa cells with 20 µg of total cell lysates. Hsp90 α serves as a loading control. The blot was incubated with anti-PYCR2 antibody (Cat#65840, 1:2,500) and HRP-conjugated goat anti-mouse secondary antibody (Cat#101, 1:20,000) respectively. Image was developed using FeQ™ ECL Substrate Kit (Cat#226).