

KD-Validated Anti-ILVBL Mouse Monoclonal Antibody



Catalog #: 65852

Aliases

ILVBL; IlvB Acetolactate Synthase Like; HACL2; AHAS; HACL1L; 209L8; ILV2H; IlvB (Bacterial Acetolactate Synthase)-Like; Acetolactate Synthase-Like Protein; 2-Hydroxyacyl-CoA Lyase 1 Like; Acetolactate Synthase Homolog; 2-Hydroxyacyl-CoA Lyase 2; IlvB-Like Protein; FLJ39061; MGC19535; MGC1269; EC 4.1.2.-; EC 2.2.1

Background

Gene Name: ILVBL

NCBI Gene Entry: [10994](#)

UniProt Entry: [A1L0T0](#)

Application Information

Molecular Weight: Predicted, 68 kDa, observed, 62 kDa

Clonality: Mouse monoclonal antibody

Clone ID: 25GB5180

Species Reactivity: Human, rat

Applications Tested: Western blotting (WB), flow cytometry (FCM)

Immunogen

Recombinant protein of human ILVBL

Isotype

Mouse IgG2b

Storage Buffer

Supplied in PBS (pH 7.4) containing 50% glycerol, and 0.02% sodium azide.

Storage

Store at -20 °C for one year.

Recommended Dilutions

Western Blotting (WB): 1:500-1:2,500

Flow Cytometry (FCM): 1:2,000

Note: This product is for research use only.

SUPPORT

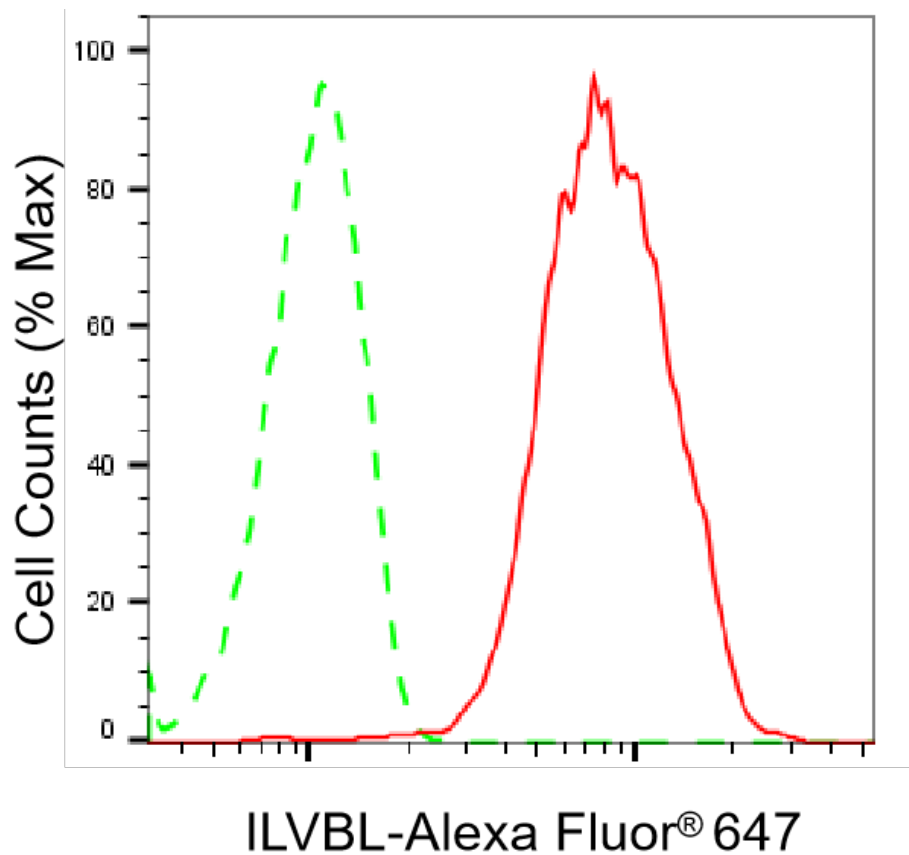
SUPPORT@GENUINBIOTECH.COM
TEL: +1-540-855-7041

ORDERS

SALES@GENUINBIOTECH.COM
FAX: +1-540-855-7041

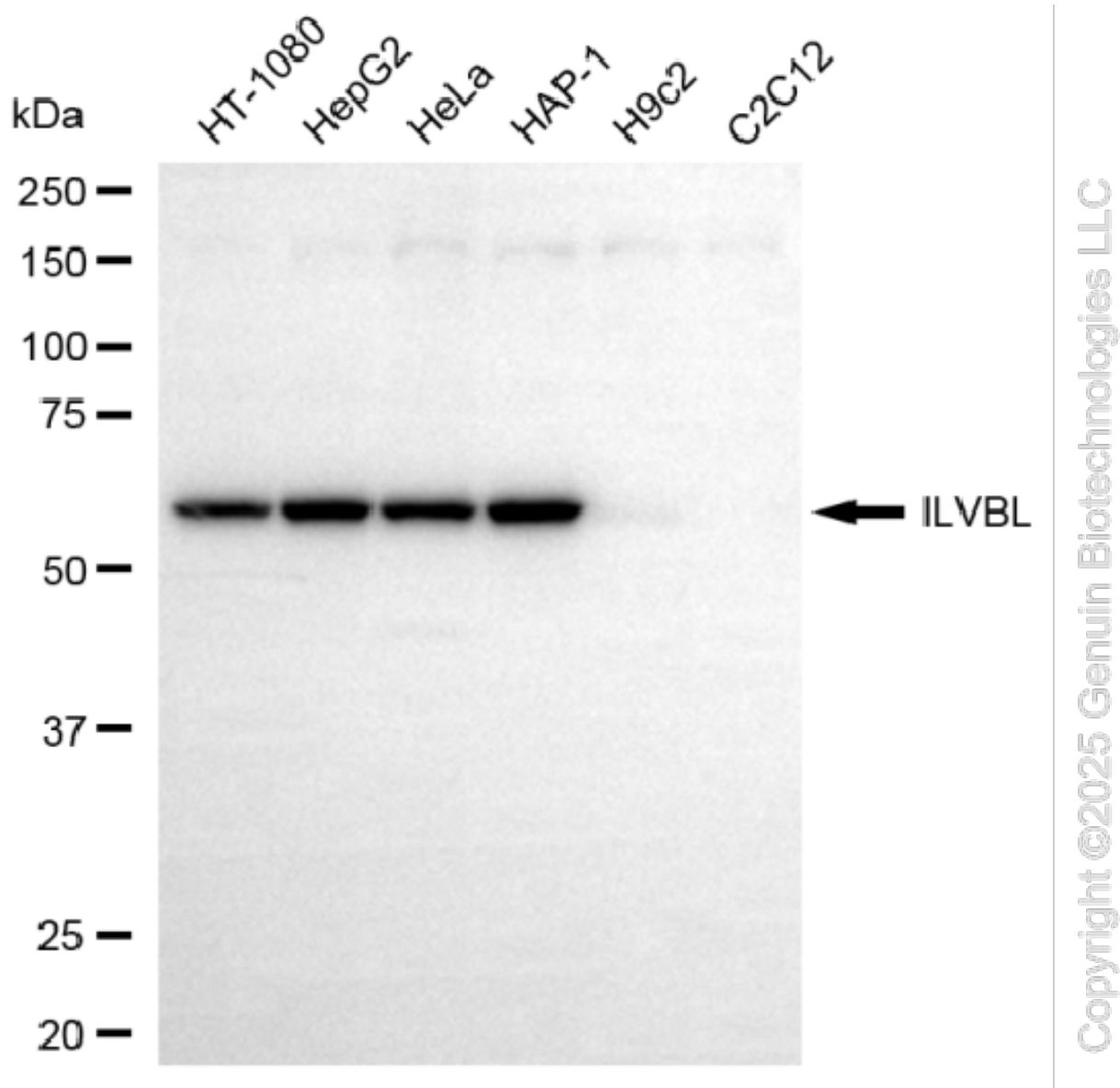
WWW.GENUINBIOTECH.COM

Validation Data

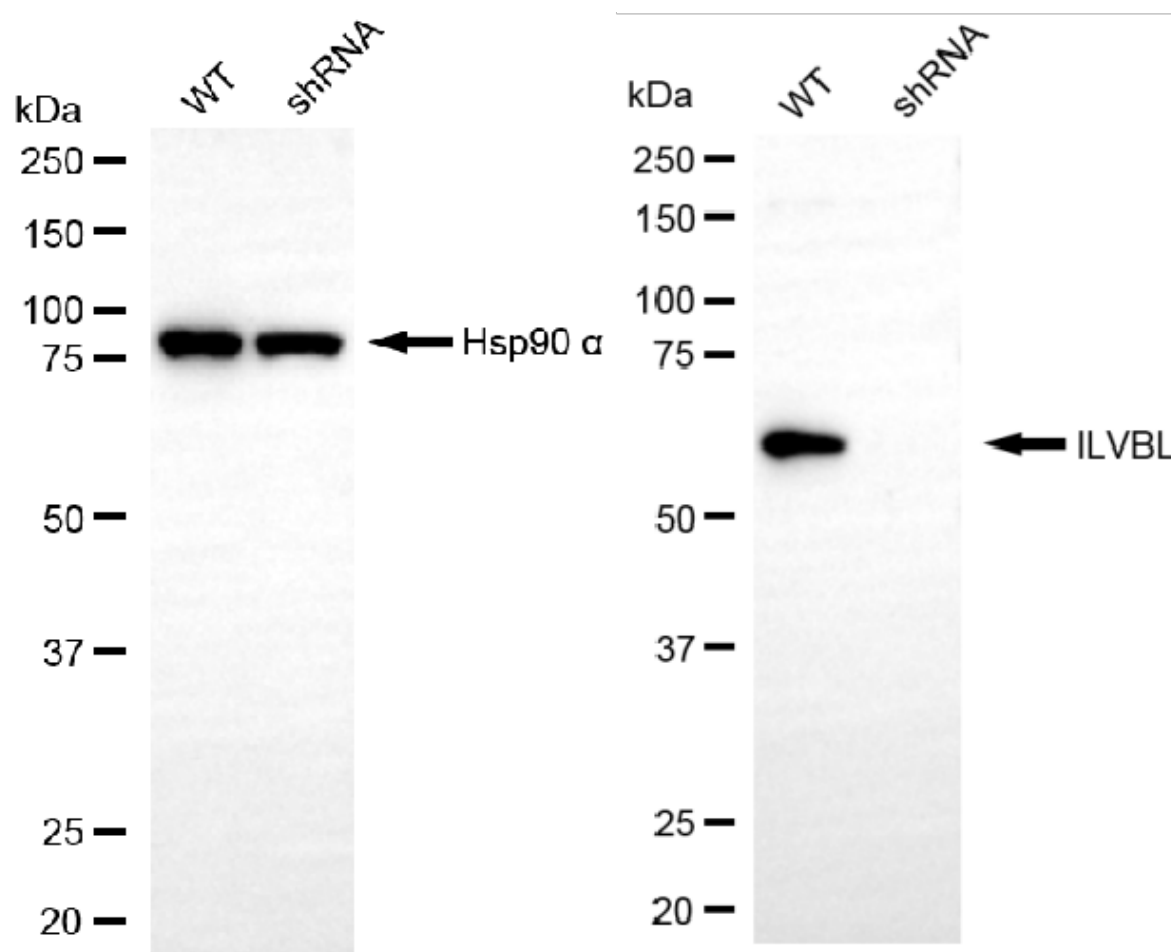


Copyright ©2025 Genuin Biotechnologies LLC

Flow cytometric analysis of ILVBL expression in HepG2 cells using anti-ILVBL antibody (Cat#65852, 1:2,000). Green, isotype control; red, ILVBL.



Western blotting analysis using anti-ILVBL antibody (Cat#65852). Total cell lysates (30 µg) from various cell lines were loaded and separated by SDS-PAGE. The blot was incubated with anti-ILVBL antibody (Cat#65852, 1:2,500) and HRP-conjugated goat anti-mouse secondary antibody (Cat#101, 1:20,000) respectively. Image was developed using FeQ™ ECL Substrate Kit (Cat#226).



Copyright ©2025 Genuin Biotechnologies LLC

Western blotting analysis using anti-ILVBL antibody (Cat#65852). ILVBL expression in wild-type (WT) and ILVBL shRNA knockdown (KD) HeLa cells with 20 µg of total cell lysates. Hsp90 α serves as a loading control. The blot was incubated with anti-ILVBL antibody (Cat#65852, 1:2,500) and HRP-conjugated goat anti-mouse secondary antibody (Cat#101, 1:20,000) respectively. Image was developed using NaQ™ ECL Substrate Kit (Cat#716).