

KD-Validated Anti-PLPBP Mouse Monoclonal Antibody



Catalog #: 65865

Aliases

PLPBP; Pyridoxal Phosphate Binding Protein; PROSC; Proline Synthase Co-Transcribed Bacterial Homolog Protein; Pyridoxal Phosphate Homeostasis Protein; PLP Homeostasis Protein; Proline Synthetase Co-Transcribed Bacterial Homolog Protein; Proline Synthetase Co-Transcribed (Bacterial Homolog); Proline Synthetase Cotranscribed Homolog (Bacterial); Pyridoxal Phosphate-Binding Protein; EPVB6D; EPEO1

Background

Gene Name: PLPBP

NCBI Gene Entry: [11212](#)

UniProt Entry: [O94903](#)

Application Information

Molecular Weight: Predicted, 30 kDa, observed, 29 kDa

Clonality: Mouse monoclonal antibody

Clone ID: 25GB5515

Species Reactivity: Human

Applications Tested: Western blotting (WB)

Immunogen

Recombinant protein of human PLPBP

Isotype

Mouse IgG1

Storage Buffer

Supplied in PBS (pH 7.4) containing 50% glycerol, and 0.02% sodium azide.

Storage

Store at -20 °C for one year.

Recommended Dilutions

Western Blotting (WB): 1:500-1:2,500

Note: This product is for research use only.

SUPPORT

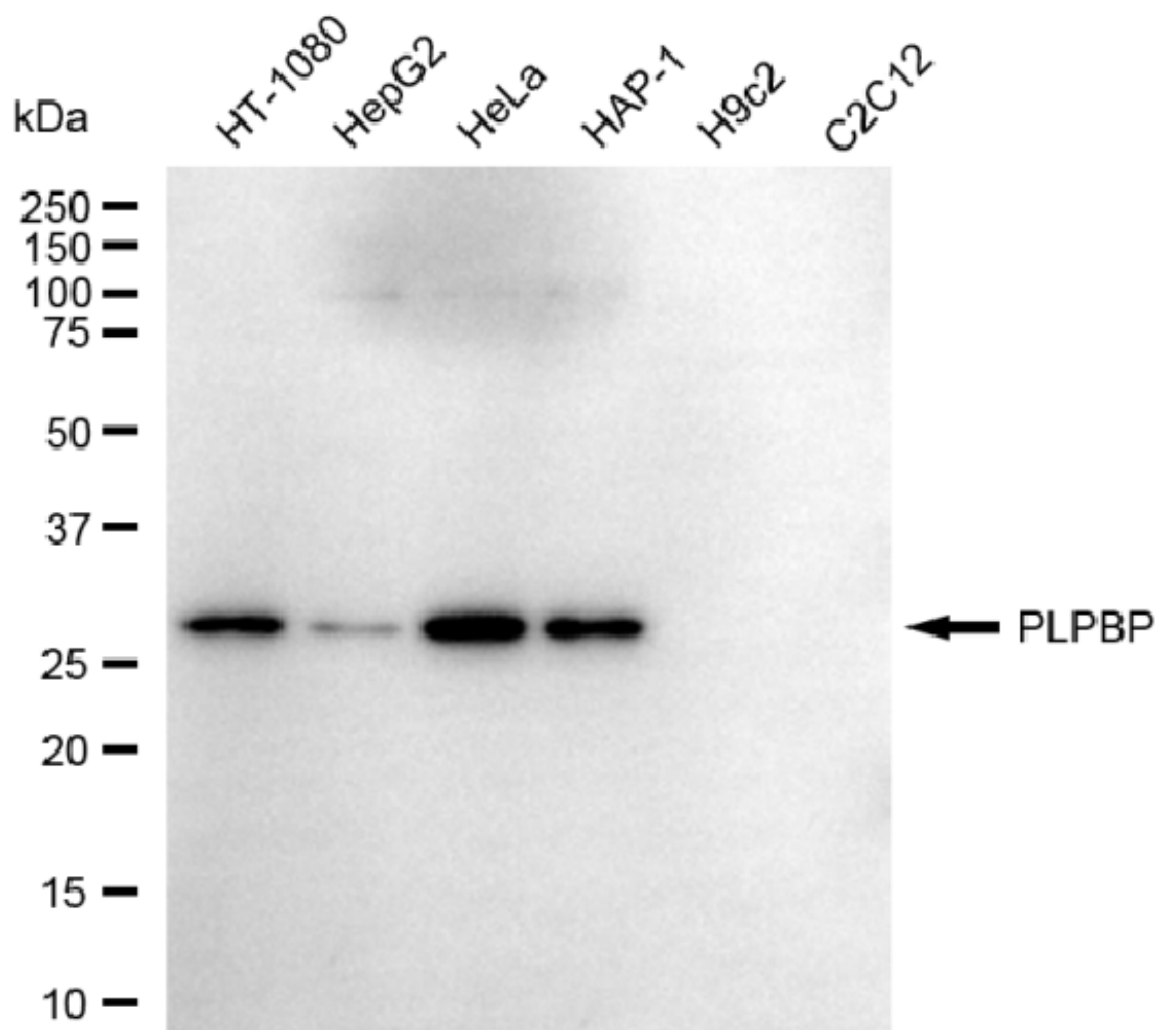
SUPPORT@GENUINBIOTECH.COM
TEL: +1-540-855-7041

ORDERS

SALES@GENUINBIOTECH.COM
FAX: +1-540-855-7041

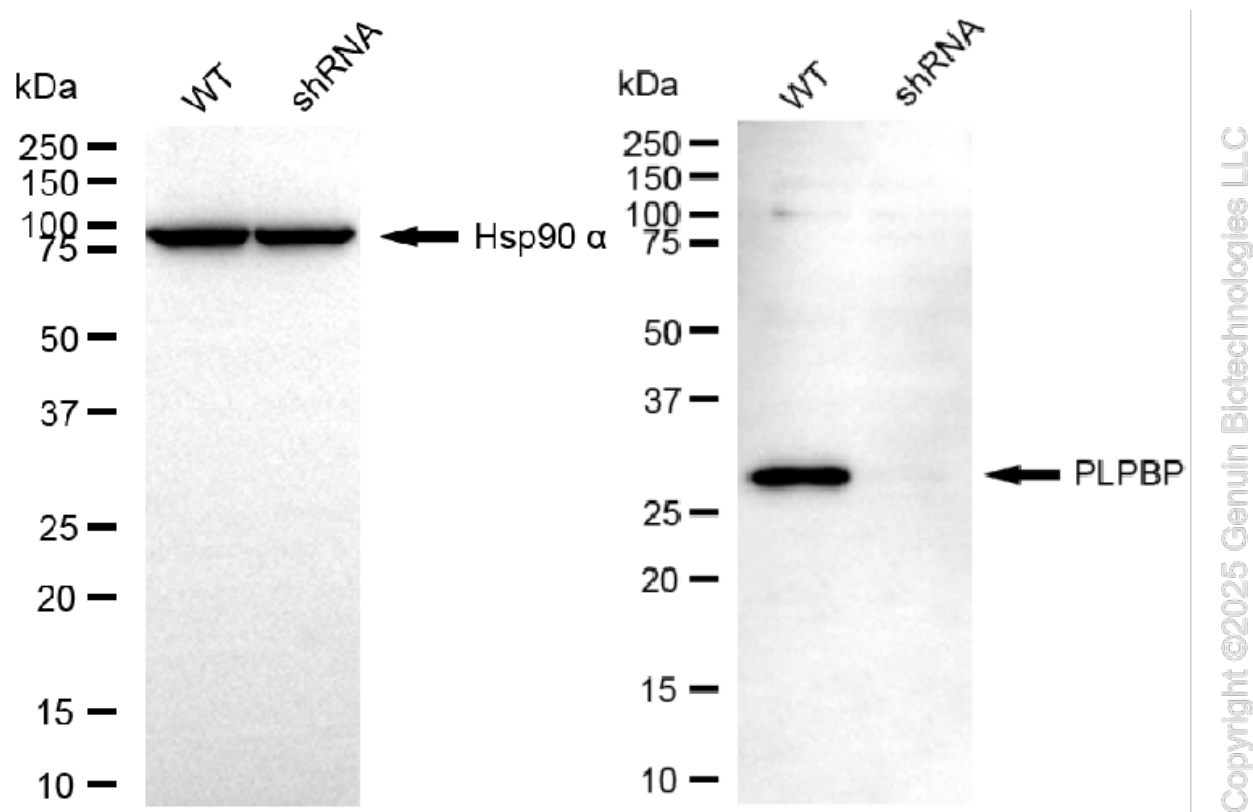
WWW.GENUINBIOTECH.COM

Validation Data



Copyright ©2025 Genuin Biotechnologies LLC

Western blotting analysis using anti-PLPBP antibody (Cat#65865). Total cell lysates (30 µg) from various cell lines were loaded and separated by SDS-PAGE. The blot was incubated with anti-PLPBP antibody (Cat#65865, 1:2,500) and HRP-conjugated goat anti-mouse secondary antibody (Cat#101, 1:20,000) respectively. Image was developed using FeQ™ ECL Substrate Kit (Cat#226).



Western blotting analysis using anti-PLPBP antibody (Cat#65865). PLPBP expression in wild-type (WT) and PLPBP shRNA knockdown (KD) HeLa cells with 30 µg of total cell lysates. Hsp90 α serves as a loading control. The blot was incubated with anti-PLPBP antibody (Cat#65865, 1:1,000) and HRP-conjugated goat anti-mouse secondary antibody (Cat#101, 1:20,000) respectively. Image was developed using FeQ™ ECL Substrate Kit (Cat#226).