

# KD-Validated Anti-COX6C Mouse Monoclonal Antibody



**Catalog #: 65867**

## Aliases

COX6C; Cytochrome C Oxidase Subunit 6C; Cytochrome C Oxidase Polypeptide VIc; Cytochrome C Oxidase Subunit VIc Preprotein; Epididymis Secretory Sperm Binding Protein; Cytochrome C Oxidase Subunit VIc

## Background

Gene Name: COX6C

NCBI Gene Entry: [1345](#)

UniProt Entry: [P09669](#)

## Application Information

Molecular Weight: Predicted, 9 kDa, observed, 13 kDa

Clonality: Mouse monoclonal antibody

Clone ID: 25GB5525

Species Reactivity: Human

Applications Tested: Western blotting (WB), flow cytometry (FCM), immunocytochemistry (IC)

## Immunogen

Recombinant protein of human COX6C

## Isotype

Mouse IgG1

## Storage Buffer

Supplied in PBS (pH 7.4) containing 50% glycerol, and 0.02% sodium azide.

## Storage

Store at -20 °C for one year.

## Recommended Dilutions

Western Blotting (WB): 1:400-1:2,000

Flow Cytometry (FCM): 1:2,000

Immunocytochemistry (IC): 1:100-1:1,000

**Note:** This product is for research use only.

---

### SUPPORT

SUPPORT@GENUINBIOTECH.COM  
TEL: +1-540-855-7041

### ORDERS

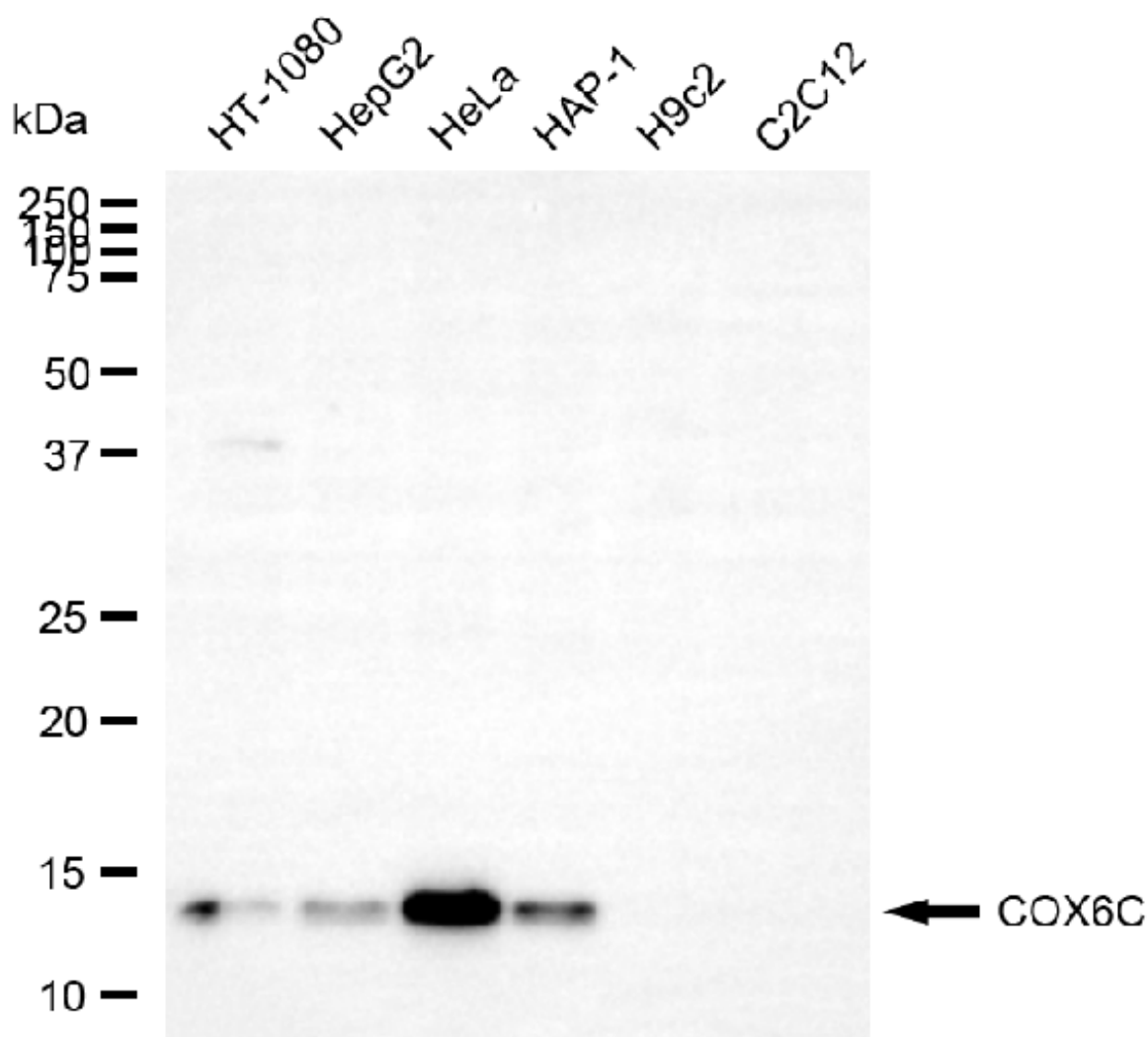
SALES@GENUINBIOTECH.COM  
FAX: +1-540-855-7041

[WWW.GENUINBIOTECH.COM](http://WWW.GENUINBIOTECH.COM)

# KD-Validated Anti-COX6C Mouse Monoclonal Antibody

PAGE 2

## Validation Data



Copyright ©2025 Genuin Biotechnologies LLC

Western blotting analysis using anti-COX6C antibody (Cat#65867). Total cell lysates (30 µg) from various cell lines were loaded and separated by SDS-PAGE. The blot was incubated with anti-COX6C antibody (Cat#65867, 1:2,000) and HRP-conjugated goat anti-mouse secondary antibody (Cat#101, 1:20,000) respectively. Image was developed using NaQ™ ECL Substrate Kit (Cat#716).

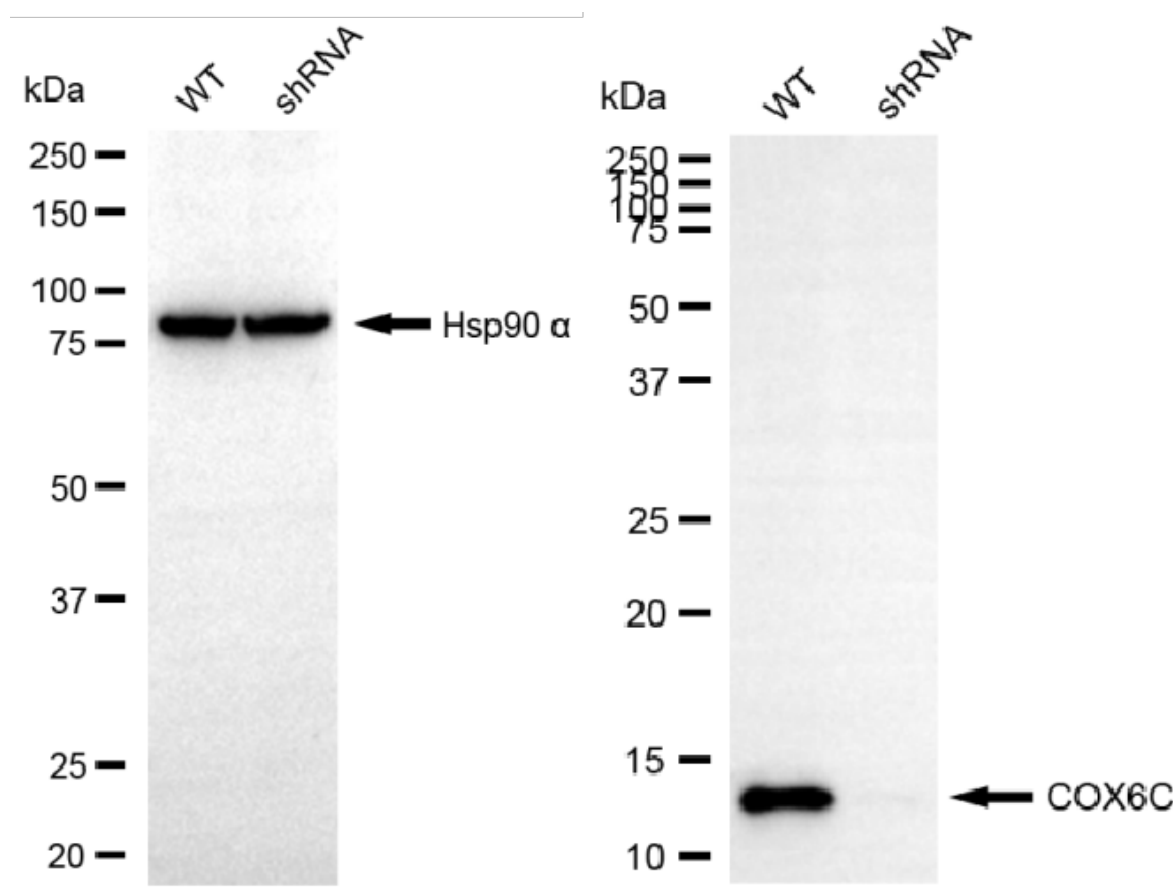
### SUPPORT

SUPPORT@GENUINBIOTECH.COM  
TEL: +1-540-855-7041

### ORDERS

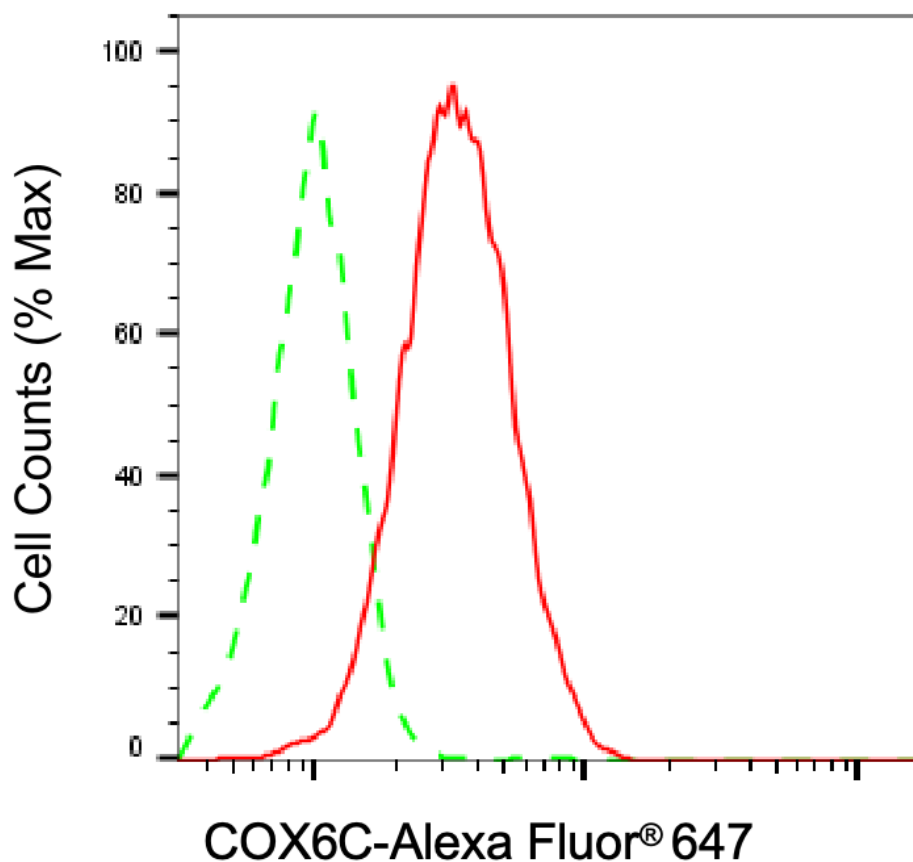
SALES@GENUINBIOTECH.COM  
FAX: +1-540-855-7041

WWW.GENUINBIOTECH.COM



Copyright ©2025 Genuin Biotechnologies LLC

Western blotting analysis using anti-COX6C antibody (Cat#65867). COX6C expression in wild-type (WT) and COX6C shRNA knockdown (KD) HeLa cells with 30 µg of total cell lysates. Hsp90 α serves as a loading control. The blot was incubated with anti-COX6C antibody (Cat#65867, 1:2,000) and HRP-conjugated goat anti-mouse secondary antibody (Cat#101, 1:20,000) respectively. Image was developed using NaQ™ ECL Substrate Kit (Cat#716).



Copyright ©2025 Genuin Biotechnologies LLC

Flow cytometric analysis of COX6C expression in HAP-1 cells using anti-COX6C antibody (Cat#65867, 1:2,000). Green, isotype control; red, COX6C.