

KD-Validated Anti-RHOC Mouse Monoclonal Antibody



Catalog #: 65872

Aliases

RHOC; Ras Homolog Family Member C; ARH9; ARHC; Rho-Related GTP-Binding Protein RhoC; Ras Homolog Gene Family, Member C; Rho CDNA Clone 9; H9; Epididymis Secretory Sperm Binding Protein; Small GTP Binding Protein RhoC; RAS-Related Homolog 9; Oncogene RHO H9; RhoC GTPase; RHOH9

Background

NCBI Gene Entry: [389](#)

UniProt Entry: [P08134](#)

Application Information

Molecular Weight: Predicted, 22 kDa; observed, 22 kDa

Clonality: Mouse monoclonal antibody

Clone ID: 25GB5595

Species Reactivity: Human, mouse, rat

Applications Tested: Western blotting (WB), flow cytometry (FCM)

Immunogen

A synthesized peptide derived from human RHOC

Isotype

Mouse IgG2b

Storage Buffer

Supplied in PBS (pH 7.4) containing 50% glycerol, and 0.02% sodium azide.

Storage

Store at -20 °C for one year.

Recommended Dilutions

Western Blotting (WB): 1:500-1:2,500

Flow Cytometry (FCM): 1:200-1:2,000

Note: This product is for research use only.

Validation Data

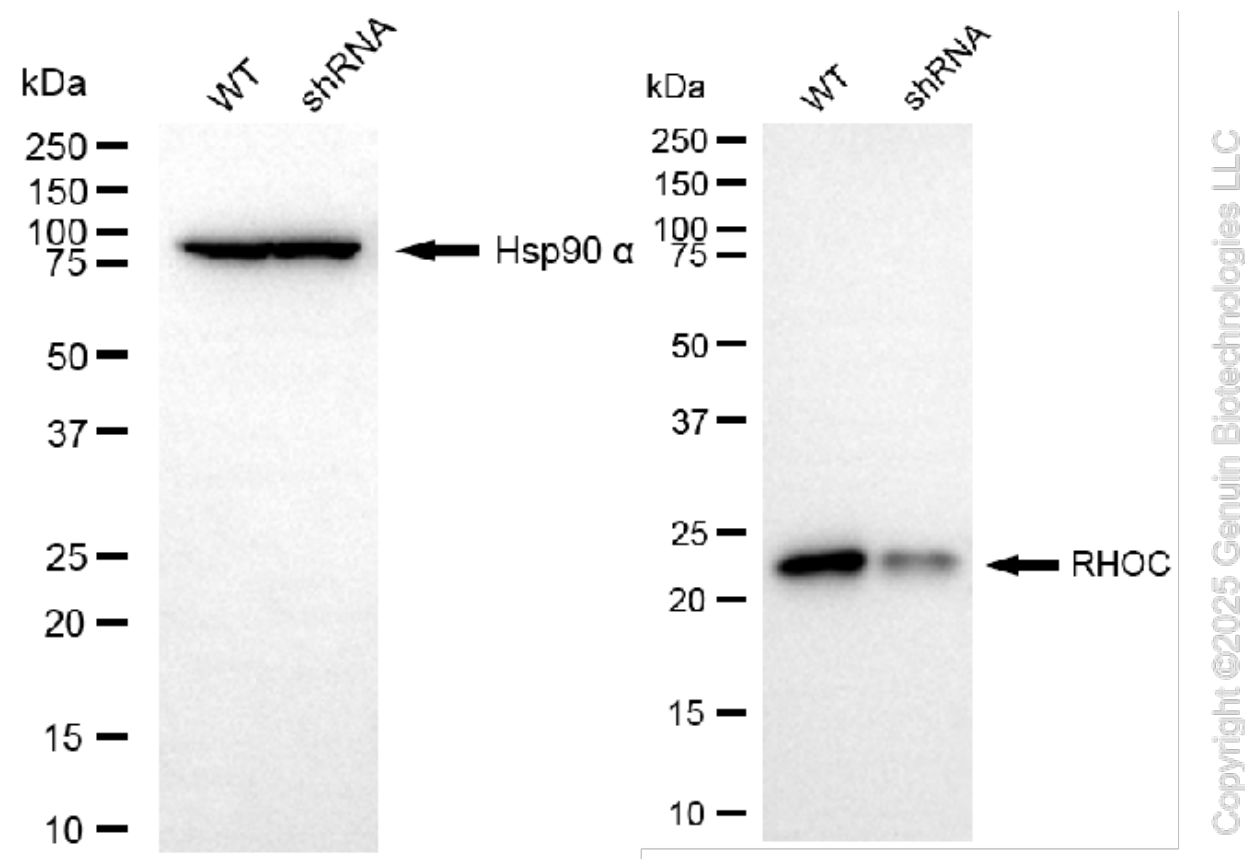
SUPPORT

SUPPORT@GENUINBIOTECH.COM
TEL: +1-540-855-7041

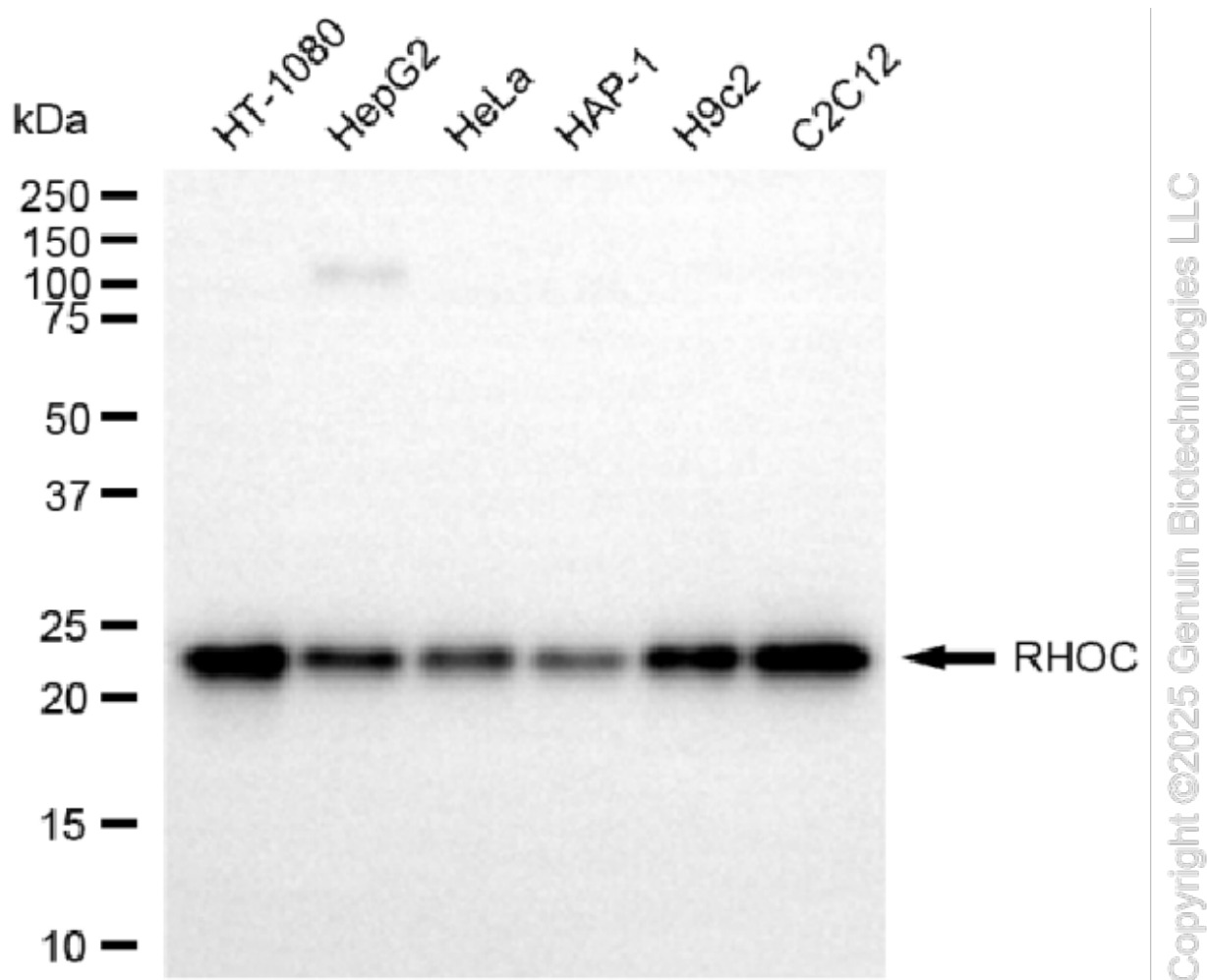
ORDERS

SALES@GENUINBIOTECH.COM
FAX: +1-540-855-7041

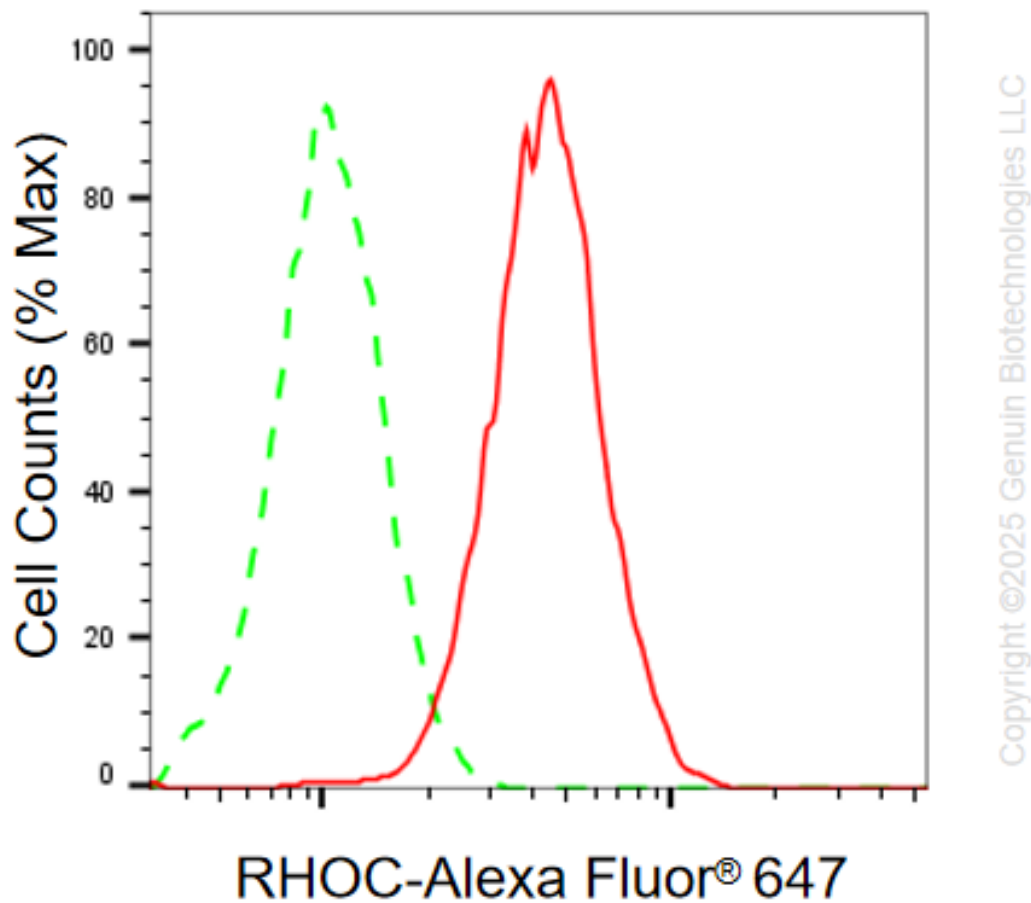
WWW.GENUINBIOTECH.COM



Western blotting analysis using anti-RHOC antibody (Cat#65872). RHOC expression in wild-type (WT) and RHOC shRNA knockdown (KD) HeLa cells with 30 µg of total cell lysates. Hsp90 α serves as a loading control. The blot was incubated with anti-RHOC antibody (Cat#65872, 1:2,500) and HRP-conjugated goat anti-mouse secondary antibody (Cat#101, 1:20,000) respectively. Image was developed using FeQ™ ECL Substrate Kit (Cat#226).



Western blotting analysis using anti-RHOC antibody (Cat#65872). Total cell lysates (30 μ g) from various cell lines were loaded and separated by SDS-PAGE. The blot was incubated with anti-RHOC antibody (Cat#65872, 1:2,500) and HRP-conjugated goat anti-mouse secondary antibody (Cat#101, 1:20,000) respectively. Image was developed using FeQ™ ECL Substrate Kit (Cat#226).



Flow cytometric analysis of RHOC expression in C2C12 cells using anti-RHOC antibody (Cat#65872, 1:2,000). Green, isotype control; red, RHOC.