

KD-Validated Anti-ASS1 Mouse Monoclonal Antibody



Catalog #: 65873

Aliases

ASS1; Argininosuccinate Synthase 1; CTLN1; ASS; Argininosuccinate Synthase; EC 6.3.4.5; Epididymis Secretory Sperm Binding Protein; Argininosuccinate Synthetase 1; Argininosuccinate Synthetase; Citrulline--Aspartate Ligase; Citrulline-Aspartate Ligase

Background

Gene Name: ASS1

NCBI Gene Entry: [445](#)

UniProt Entry: [P00966](#)

Application Information

Molecular Weight: Predicted, 47 kDa, observed, 43 kDa

Clonality: Mouse monoclonal antibody

Clone ID: 25GB5600

Species Reactivity: Human

Applications Tested: Western blotting (WB), flow cytometry (FCM)

Immunogen

A synthesized peptide derived from human ASS1

Isotype

Mouse IgG1

Storage Buffer

Supplied in PBS (pH 7.4) containing 50% glycerol, and 0.02% sodium azide.

Storage

Store at -20 °C for one year.

Recommended Dilutions

Western Blotting (WB): 1:500-1:2,500

Flow Cytometry (FCM): 1:2,000

Note: This product is for research use only.

Validation Data

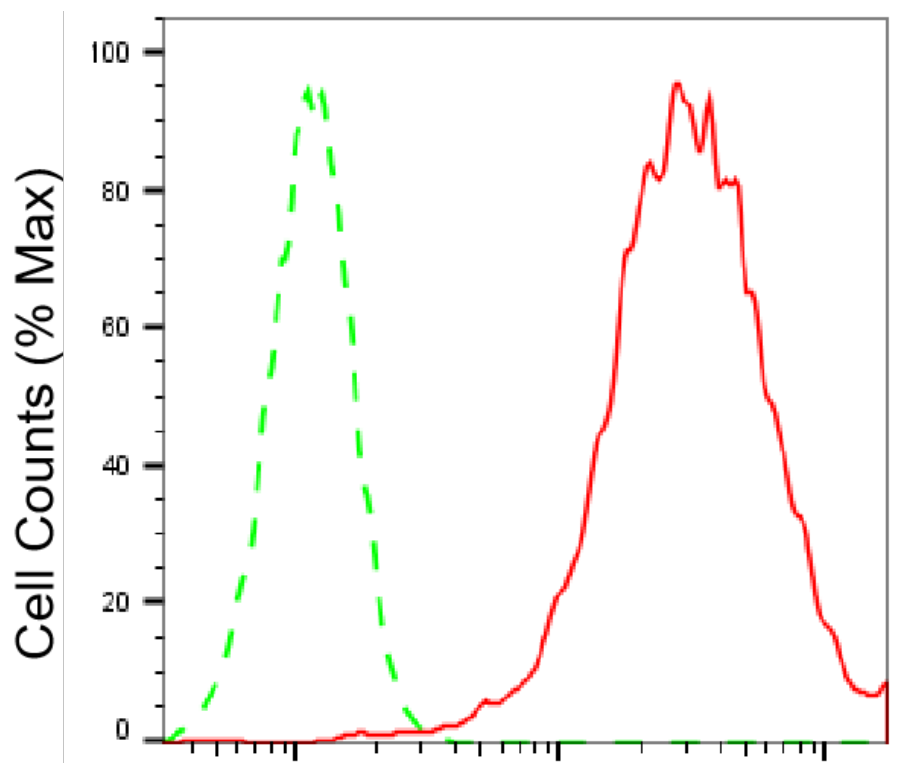
SUPPORT

SUPPORT@GENUINBIOTECH.COM
TEL: +1-540-855-7041

ORDERS

SALES@GENUINBIOTECH.COM
FAX: +1-540-855-7041

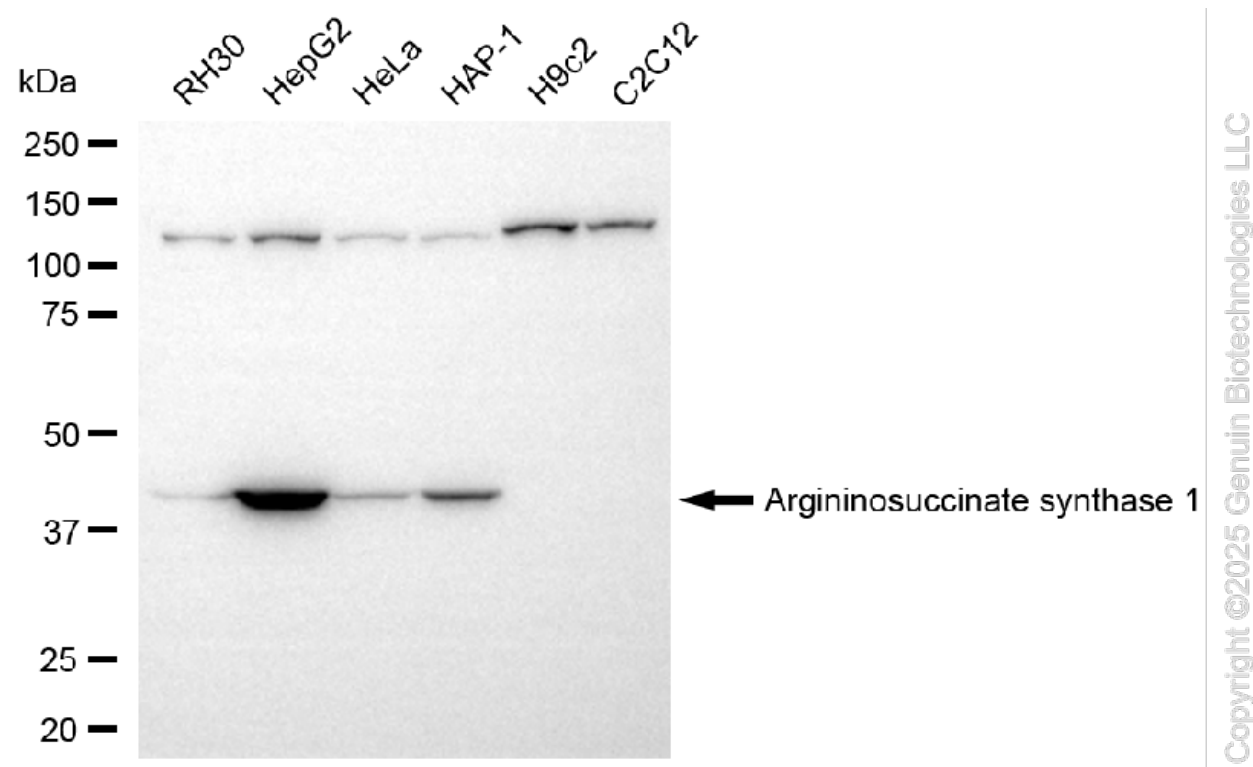
WWW.GENUINBIOTECH.COM



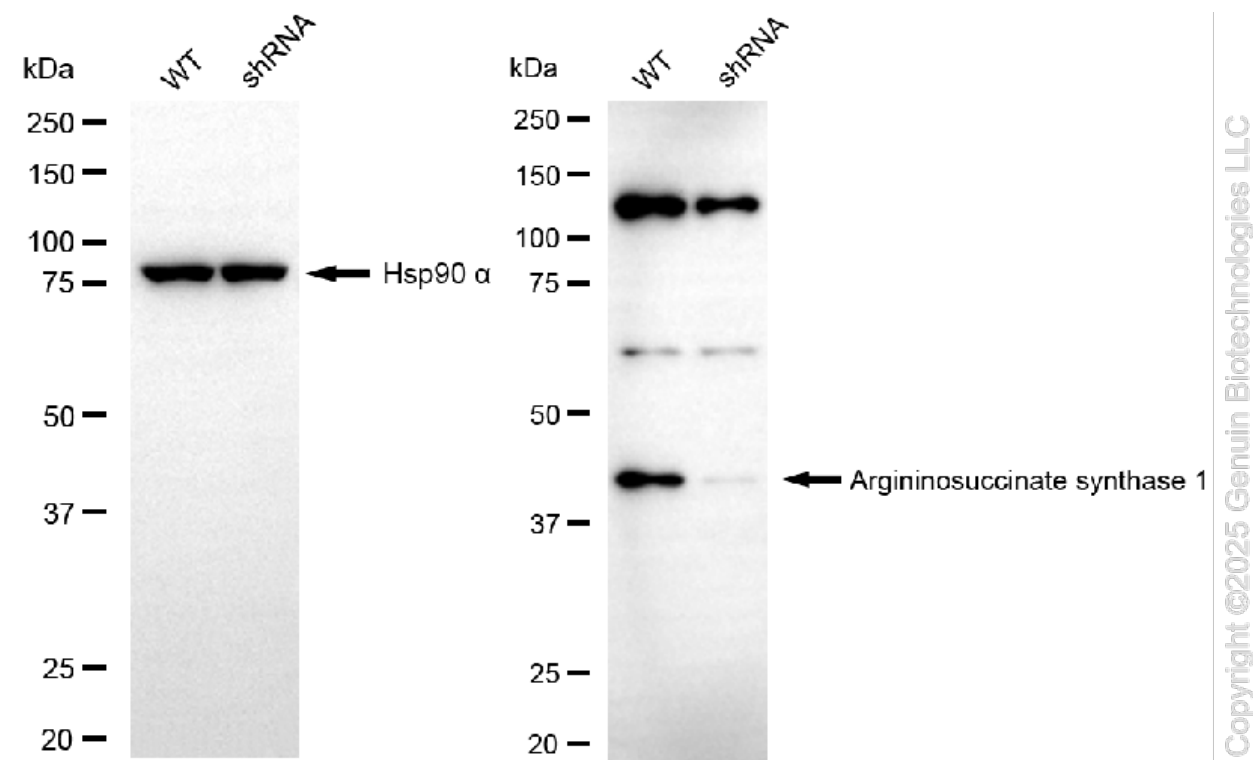
Copyright ©2025 Genuin Biotechnologies LLC

Argininosuccinate synthase 1-Alexa Fluor® 647

Flow cytometric analysis of Argininosuccinate synthase 1 expression in HepG2 cells using anti-Argininosuccinate synthase 1 antibody (Cat#65873, 1:2,000). Green, isotype control; red, Argininosuccinate synthase 1.



Western blotting analysis using anti-argininosuccinate synthase 1 antibody (Cat#65873). Total cell lysates (30 µg) from various cell lines were loaded and separated by SDS-PAGE. The blot was incubated with anti-argininosuccinate synthase 1 antibody (Cat#65873, 1:2,500) and HRP-conjugated goat anti-mouse secondary antibody (Cat#101, 1:20,000) respectively. Image was developed using NaQ™ ECL Substrate Kit (Cat#716).



Western blotting analysis using anti-argininosuccinate synthase 1 antibody (Cat#65873). Argininosuccinate synthase 1 expression in wild-type (WT) and argininosuccinate synthase 1 (ASS1) shRNA knockdown (KD) HeLa cells with 20 μ g of total cell lysates. Hsp90 α serves as a loading control. The blot was incubated with anti-argininosuccinate synthase 1 antibody (Cat#65873, 1:2,500) and HRP-conjugated goat anti-mouse secondary antibody (Cat#101, 1:20,000) respectively. Image was developed using FeQ™ ECL Substrate Kit (Cat#226).