

# KD-Validated Anti-PPP2R1B Mouse Monoclonal Antibody



**Catalog #: 65875**

## Aliases

PPP2R1B; Protein Phosphatase 2 Scaffold Subunit Abeta; PP2A-Abeta; PR65B; Serine/Threonine-Protein Phosphatase 2A 65 KDa Regulatory Subunit A Beta Isoform; Protein Phosphatase 2 (Formerly 2A), Regulatory Subunit A (PR 65), Beta Isoform; Protein Phosphatase 2, Structural/Regulatory Subunit A, Beta; Protein Phosphatase 2A, Regulatory Subunit A, Beta Isoform; Protein Phosphatase 2, Regulatory Subunit A, Beta; Protein Phosphatase 2 Regulatory Subunit A, Beta; PP2A Subunit A Isoform PR65-Beta; PP2A Subunit A Isoform R1-Beta; PP2A-A-Beta

## Background

Gene Name: PPP2R1B

NCBI Gene Entry: [5519](#)

UniProt Entry: [P30154](#)

## Application Information

Molecular Weight: Predicted, 66 kDa, observed, 62 kDa

Clonality: Mouse monoclonal antibody

Clone ID: 25GB5610

Species Reactivity: Human

Applications Tested: Western blotting (WB), flow cytometry (FCM)

## Immunogen

Recombinant protein of human PPP2R1B

## Isotype

Mouse IgG1

## Storage Buffer

Supplied in PBS (pH 7.4) containing 50% glycerol, and 0.02% sodium azide.

## Storage

Store at -20 °C for one year.

## Recommended Dilutions

Western Blotting (WB): 1:500-1:2,500

Flow Cytometry (FCM): 1:2,000

---

### SUPPORT

SUPPORT@GENUINBIOTECH.COM  
TEL: +1-540-855-7041

### ORDERS

SALES@GENUINBIOTECH.COM  
FAX: +1-540-855-7041

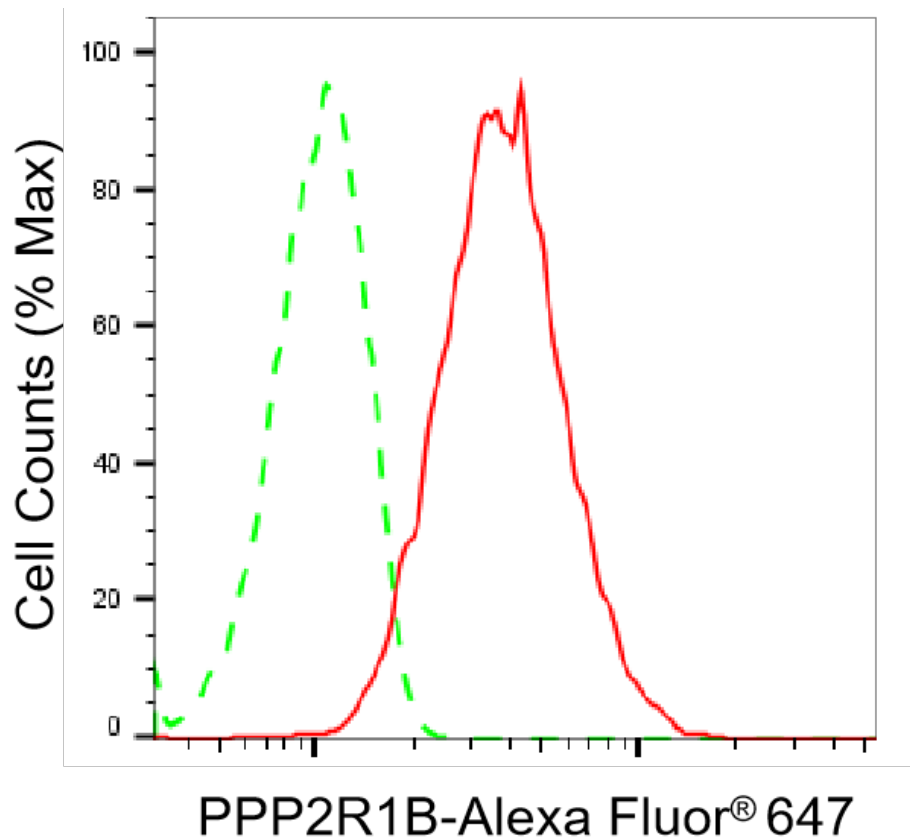
[WWW.GENUINBIOTECH.COM](http://WWW.GENUINBIOTECH.COM)

## KD-Validated Anti-PPP2R1B Mouse Monoclonal Antibody

PAGE 2

**Note:** This product is for research use only.

### Validation Data



Flow cytometric analysis of PPP2R1B expression in HepG2 cells using anti-PPP2R1B antibody (Cat#65875, 1:2,000). Green, isotype control; red, PPP2R1B.

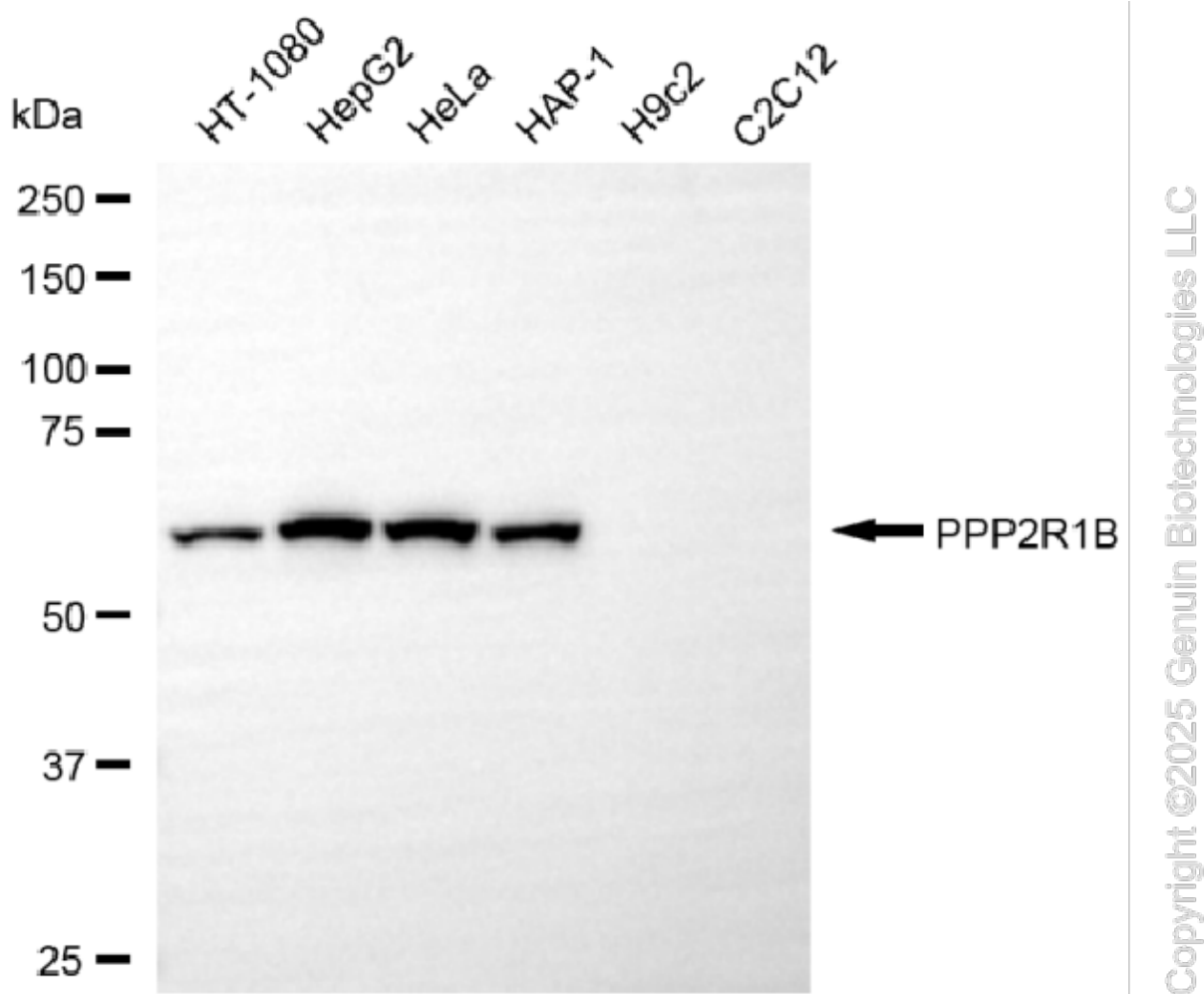
#### SUPPORT

SUPPORT@GENUINBIOTECH.COM  
TEL: +1-540-855-7041

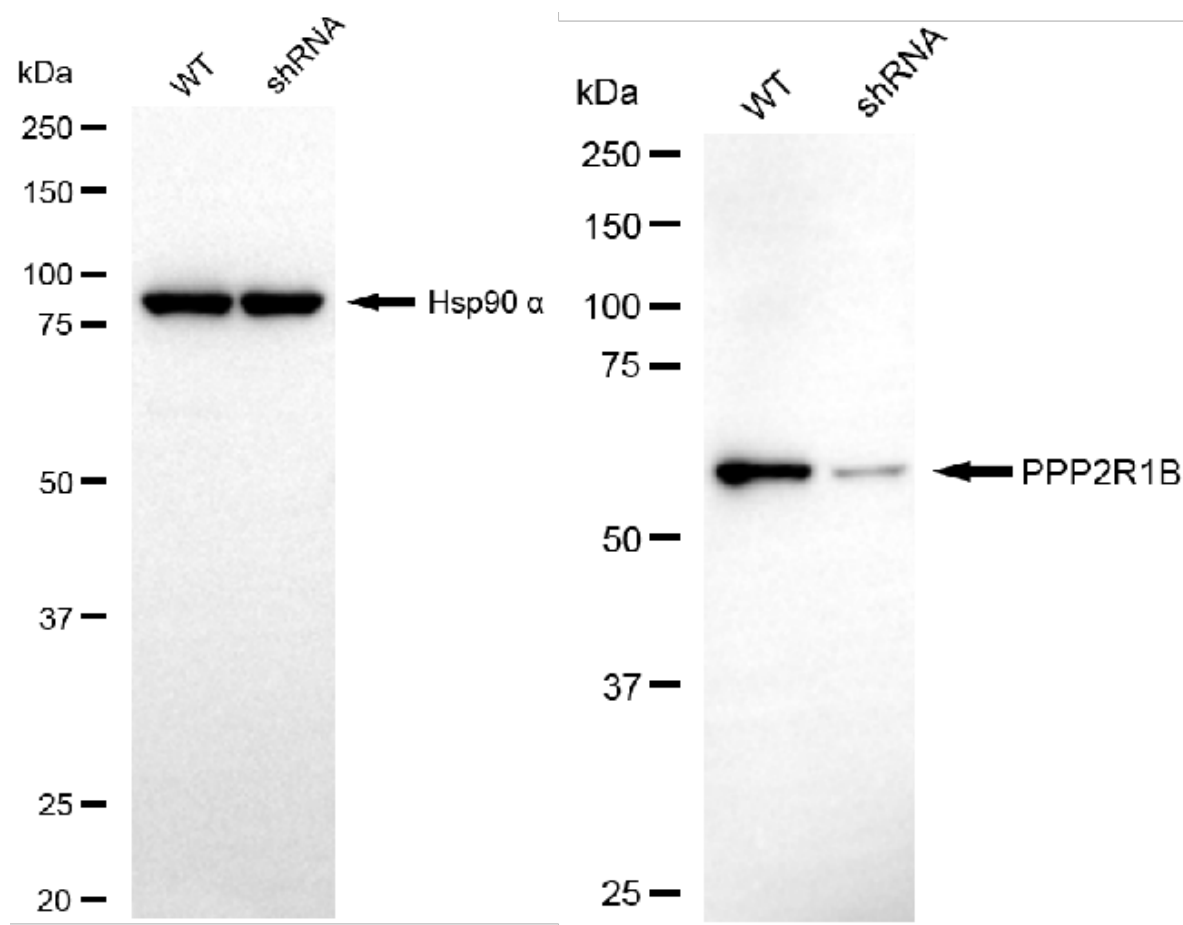
#### ORDERS

SALES@GENUINBIOTECH.COM  
FAX: +1-540-855-7041

[WWW.GENUINBIOTECH.COM](http://WWW.GENUINBIOTECH.COM)



Western blotting analysis using anti-PPP2R1B antibody (Cat#65875). Total cell lysates (30 µg) from various cell lines were loaded and separated by SDS-PAGE. The blot was incubated with anti-PPP2R1B antibody (Cat#65875, 1:2,500) and HRP-conjugated goat anti-mouse secondary antibody (Cat#101, 1:20,000) respectively. Image was developed using NaQ™ ECL Substrate Kit (Cat#716).



Copyright ©2025 Genuin Biotechnologies LLC

Western blotting analysis using anti-PPP2R1B antibody (Cat#65875). PPP2R1B expression in wild-type (WT) and PPP2R1B shRNA knockdown (KD) HepG2 cells with 20 µg of total cell lysates. Hsp90 α serves as a loading control. The blot was incubated with anti-PPP2R1B antibody (Cat#65875, 1:2,500) and HRP-conjugated goat anti-mouse secondary antibody (Cat#101, 1:20,000) respectively. Image was developed using FeQ™ ECL Substrate Kit (Cat#226).