

KD-Validated Anti-GPD2 Mouse Monoclonal Antibody



Catalog #: 65884

Aliases

GPD2; Glycerol-3-Phosphate Dehydrogenase 2; Glycerol-3-Phosphate Dehydrogenase 2 (Mitochondrial); Glycerol-3-Phosphate Dehydrogenase, Mitochondrial; EC 1.1.5.3; GPDH-M; GPD-M; MtGPD; MGDH; Mitochondrial Glycerophosphate Dehydrogenase Gene; Mitochondrial Glycerophosphate Dehydrogenase; Mitochondrial Glycerophosphate Dehydrogenase; Testicular Tissue Protein Li 76; MGPDH; GDH2; GPDM

Background

Gene Name: GPD2

NCBI Gene Entry: [2820](#)

UniProt Entry: [P43304](#)

Application Information

Molecular Weight: Predicted, 81 kDa; observed, 69 kDa

Clonality: Mouse monoclonal antibody

Clone ID: 25GB5655

Species Reactivity: Human, mouse, rat

Applications Tested: Western blotting (WB)

Immunogen

Recombinant protein of human GPD2

Isotype

Mouse IgG1

Storage Buffer

Supplied in PBS (pH 7.4) containing 50% glycerol, and 0.02% sodium azide.

Storage

Store at -20 °C for one year.

Recommended Dilutions

Western Blotting (WB): 1:400-1:2,000

Note: This product is for research use only.

SUPPORT

SUPPORT@GENUINBIOTECH.COM
TEL: +1-540-855-7041

ORDERS

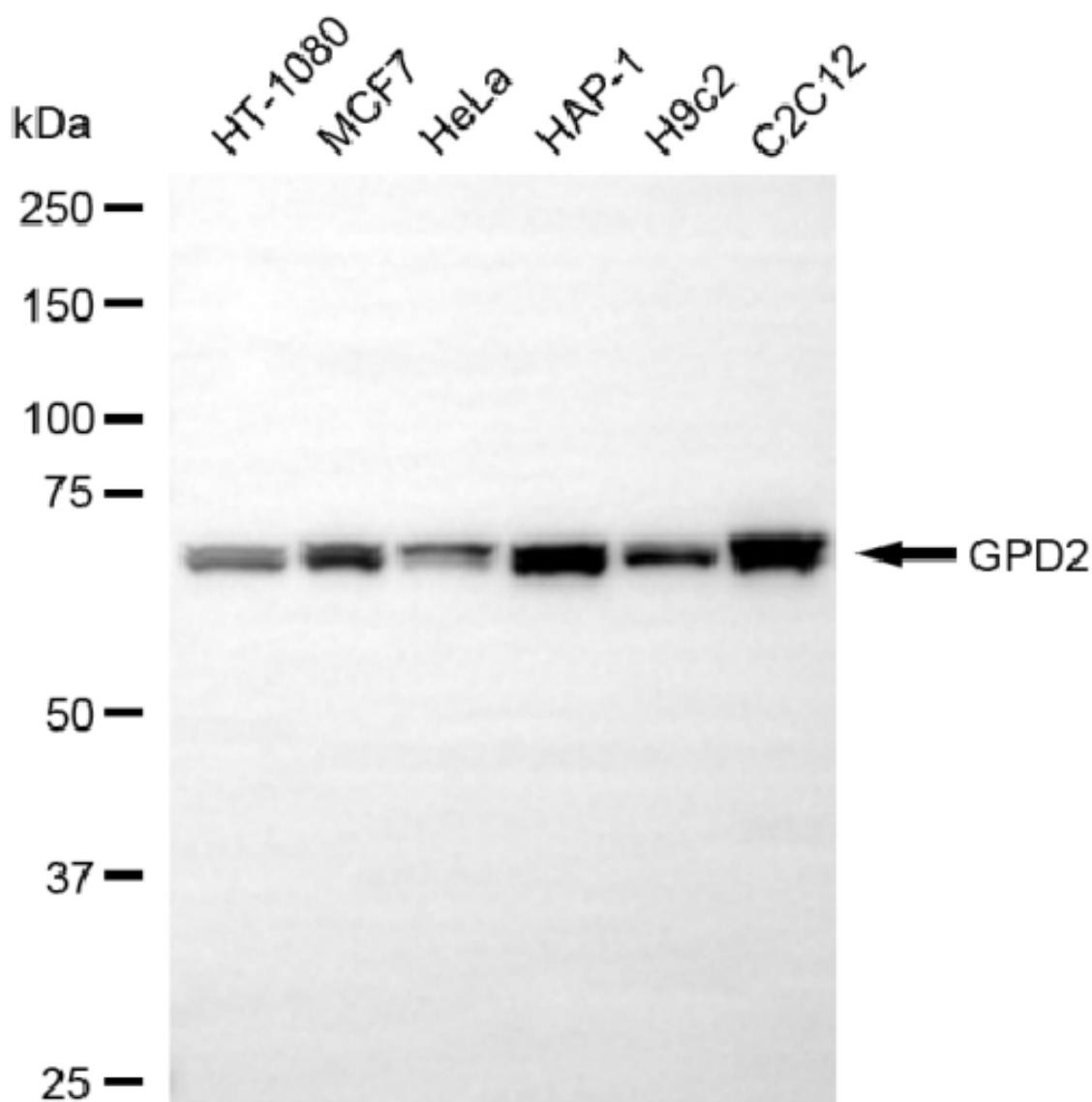
SALES@GENUINBIOTECH.COM
FAX: +1-540-855-7041

WWW.GENUINBIOTECH.COM

KD-Validated Anti-GPD2 Mouse Monoclonal Antibody

PAGE 2

Validation Data



Copyright ©2025 Genuin Biotechnologies LLC

Western blotting analysis using anti-GPD2 antibody (Cat#65884). Total cell lysates (30 µg) from various cell lines were loaded and separated by SDS-PAGE. The blot was incubated with anti-GPD2 antibody (Cat#65884, 1:2,000) and HRP-conjugated goat anti-mouse secondary antibody (Cat#101, 1:20,000) respectively. Image was developed using NaQ™ ECL Substrate Kit (Cat#716).

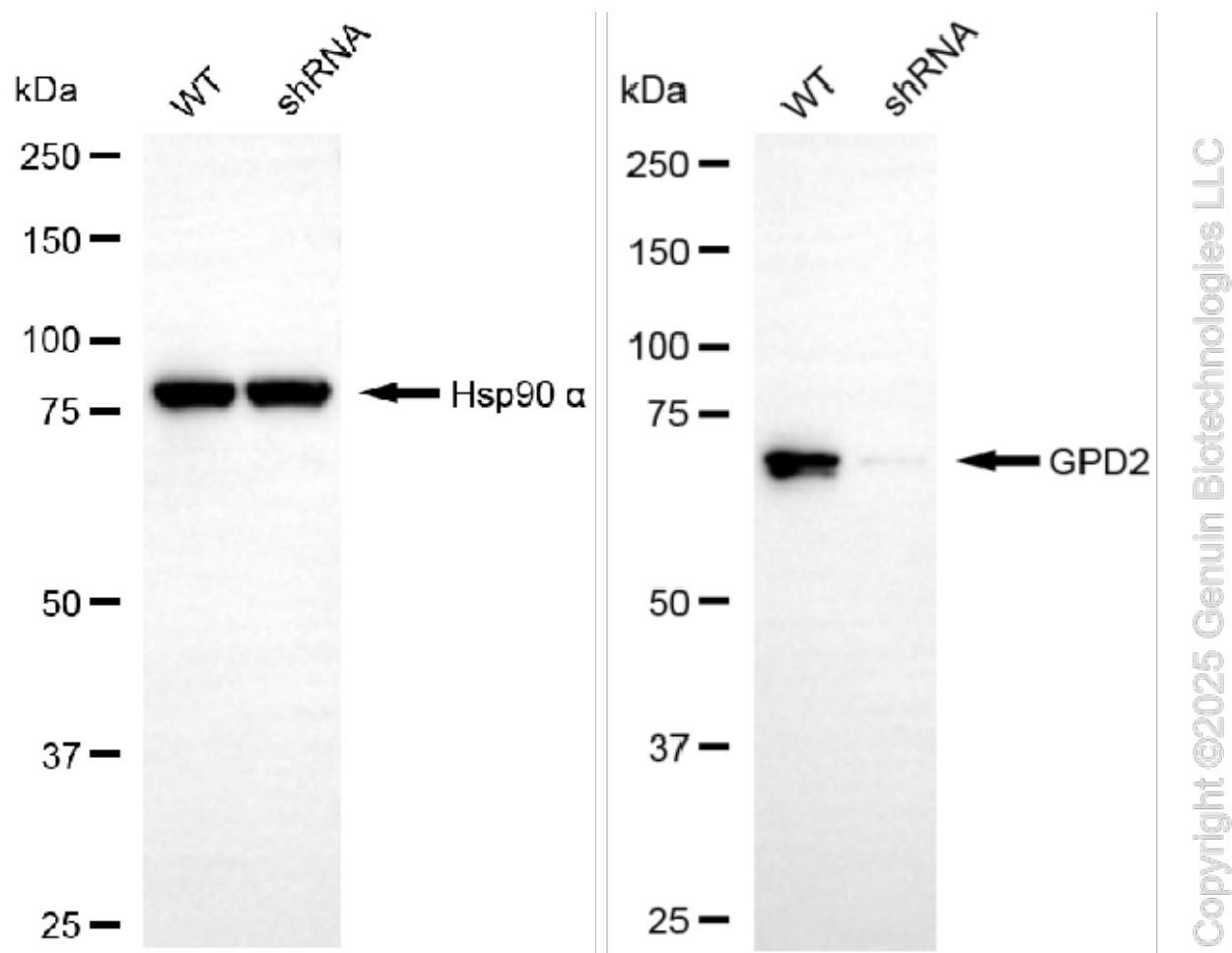
SUPPORT

SUPPORT@GENUINBIOTECH.COM
TEL: +1-540-855-7041

ORDERS

SALES@GENUINBIOTECH.COM
FAX: +1-540-855-7041

WWW.GENUINBIOTECH.COM



Western blotting analysis using anti-GPD2 antibody (Cat#65884). GPD2 expression in wild-type (WT) and GPD2 shRNA knockdown (KD) HeLa cells with 20 µg of total cell lysates. Hsp90 α serves as a loading control. The blot was incubated with anti-GPD2 antibody (Cat#65884, 1:2,000) and HRP-conjugated goat anti-mouse secondary antibody (Cat#101, 1:20,000) respectively. Image was developed using NaQ™ ECL Substrate Kit (Cat#716).