

KD-Validated Anti-SCAMP2 Mouse Monoclonal Antibody



Catalog #: 65906

Aliases

SCAMP2; Secretory Carrier Membrane Protein 2; Secretory Carrier-Associated Membrane Protein 2; Testis Secretory Sperm-Binding Protein Li 219p

Background

NCBI Gene Entry: [10066](#)

UniProt Entry: [O15127](#)

Application Information

Molecular Weight: Predicted, 37 kDa; observed, 35 kDa

Clonality: Mouse monoclonal antibody

Clone ID: 25GB5770

Species Reactivity: Human

Applications Tested: Western blotting (WB), immunocytochemistry (IC)

Immunogen

Recombinant protein of human SCAMP2

Isotype

Mouse IgG2b

Storage Buffer

Supplied in PBS (pH 7.4) containing 50% glycerol, and 0.02% sodium azide.

Storage

Store at -20 °C for one year.

Recommended Dilutions

Western Blotting (WB): 1:400-1:5,000

Immunocytochemistry (IC): 1:100-1:1,000

Note: This product is for research use only.

Validation Data

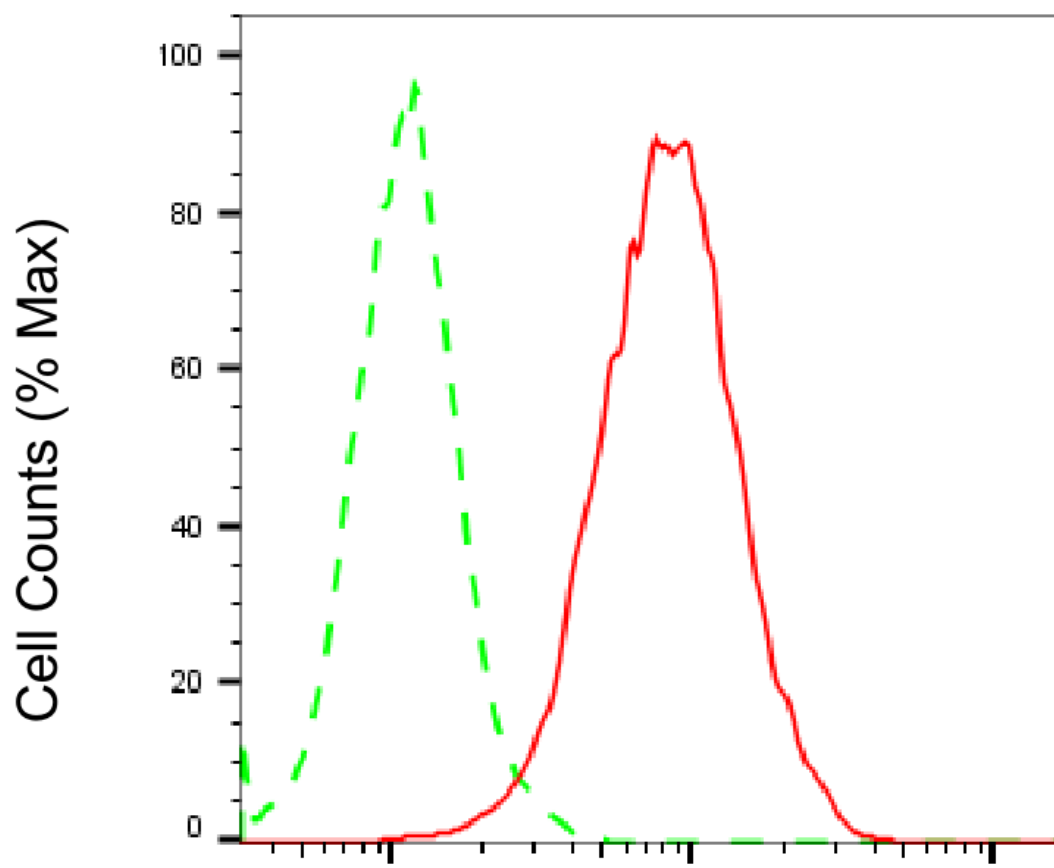
SUPPORT

SUPPORT@GENUINBIOTECH.COM
TEL: +1-540-855-7041

ORDERS

SALES@GENUINBIOTECH.COM
FAX: +1-540-855-7041

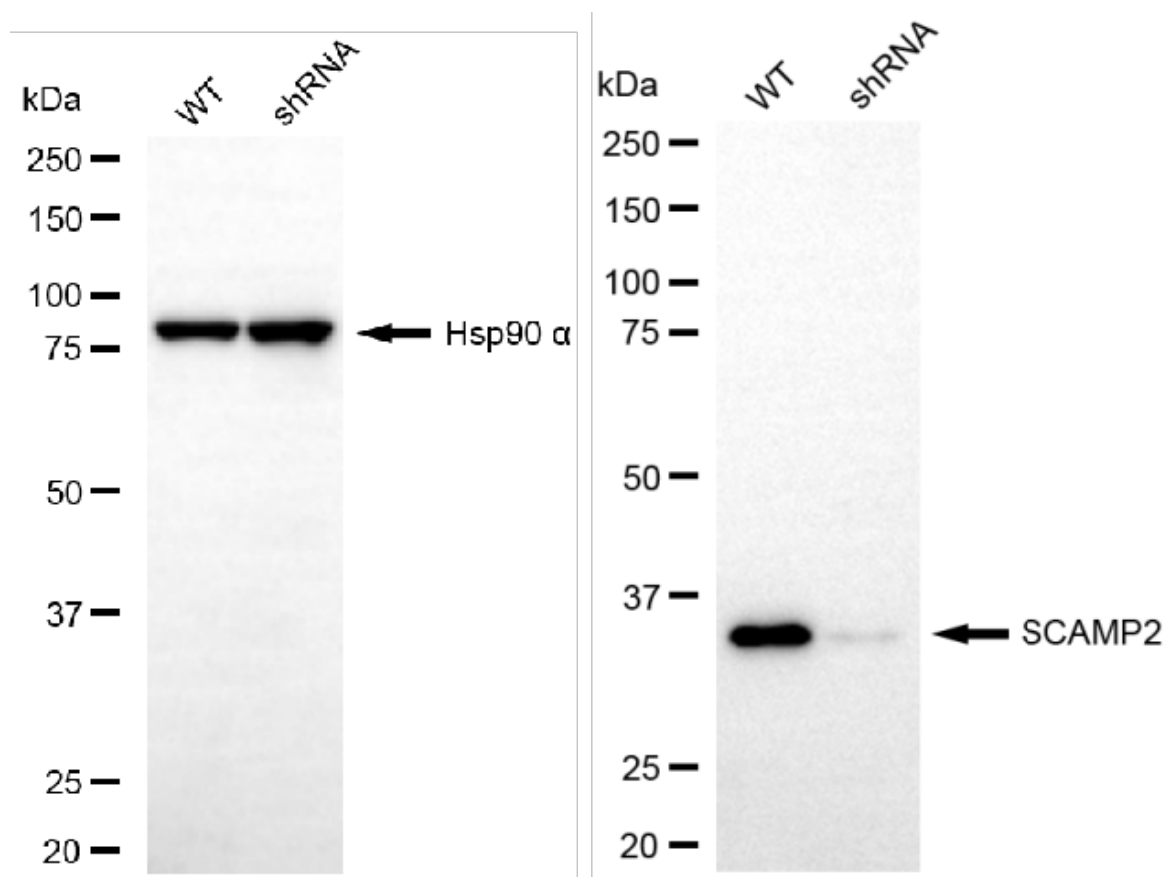
WWW.GENUINBIOTECH.COM



Copyright ©2025 Genuin Biotechnologies LLC

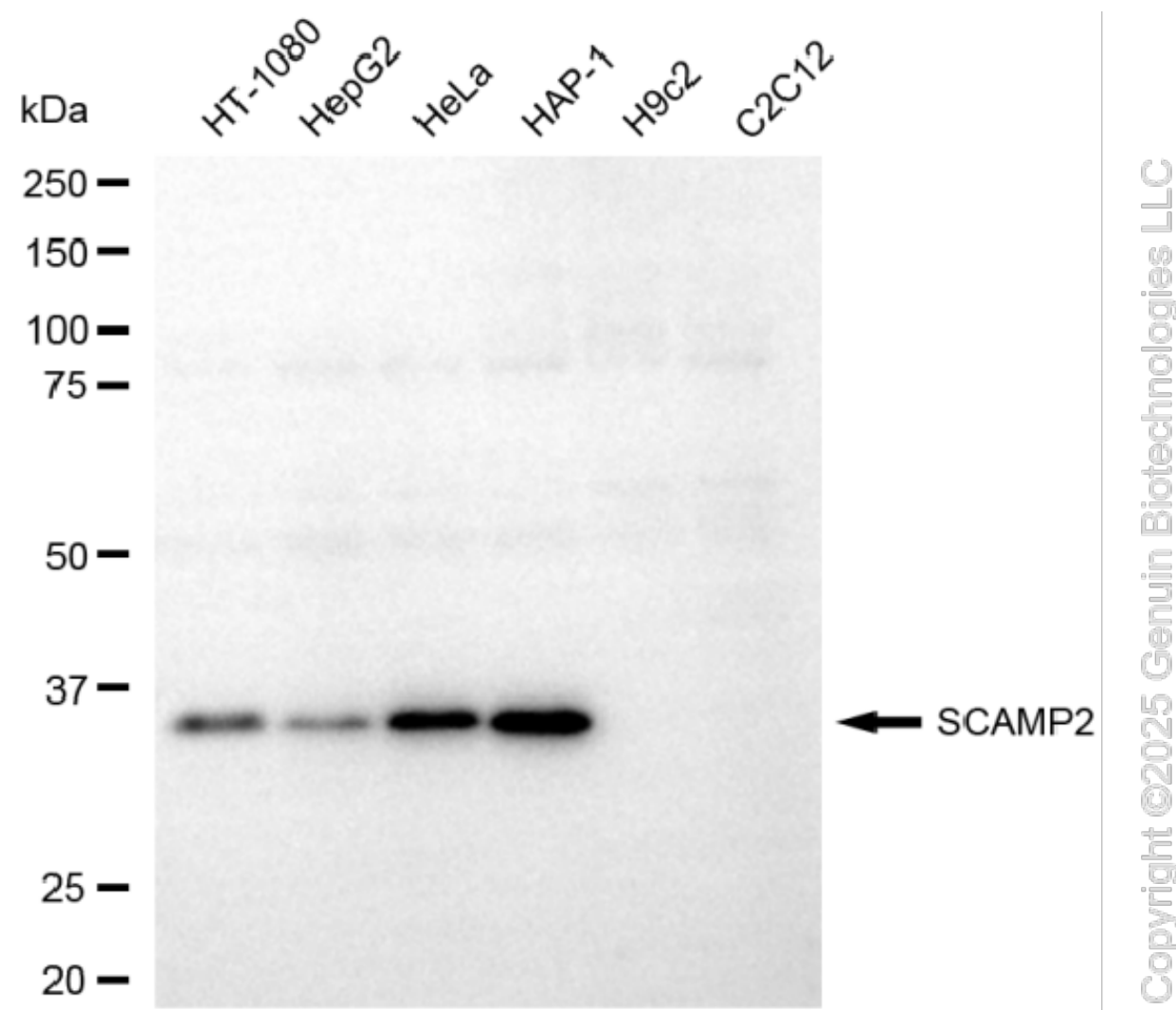
SCAMP2-Alexa Fluor® 647

Flow cytometric analysis of SCAMP2 expression in HAP-1 cells using anti-SCAMP2 antibody (Cat#65906, 1:2,000). Green, isotype control; red, SCAMP2.

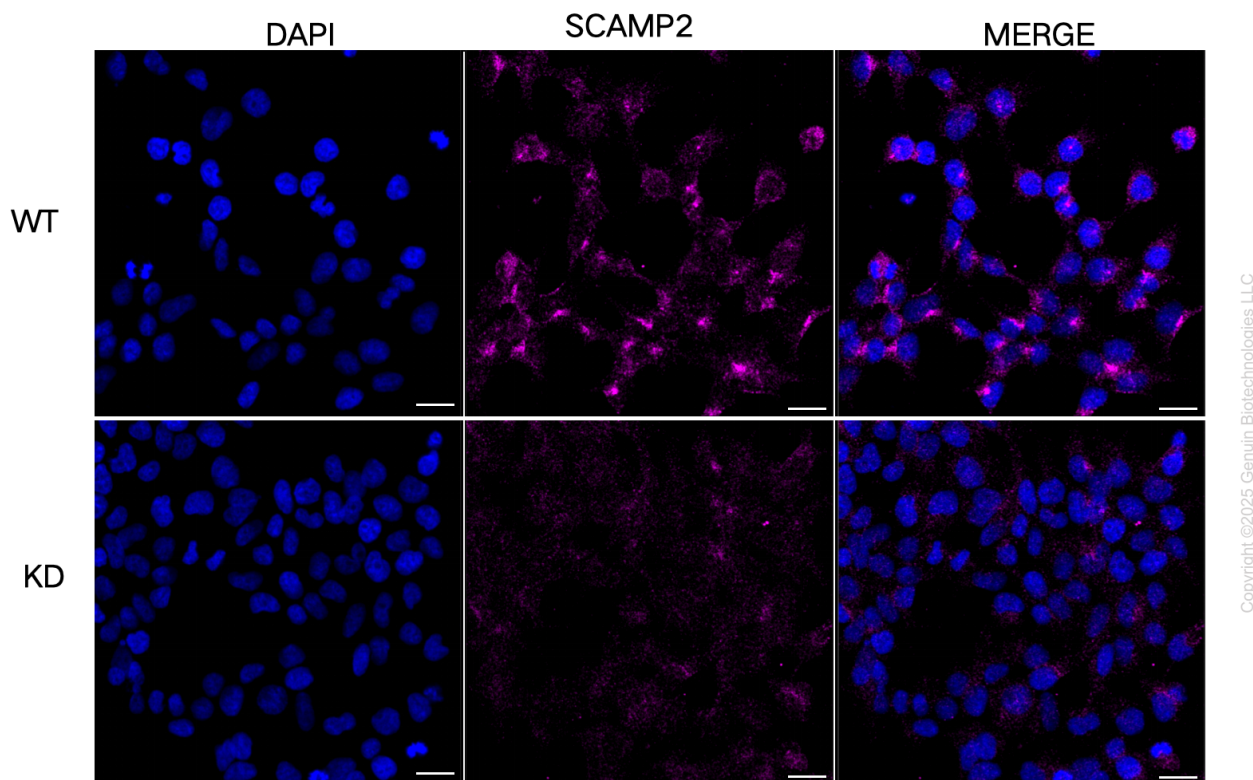


Copyright ©2025 Genuin Biotechnologies LLC

Western blotting analysis using anti-SCAMP2 antibody (Cat#65906). SCAMP2 expression in wild-type (WT) and SCAMP2 shRNA knockdown (KD) HeLa cells with 20 µg of total cell lysates. Hsp90 α serves as a loading control. The blot was incubated with anti-SCAMP2 antibody (Cat#65906, 1:5,000) and HRP-conjugated goat anti-mouse secondary antibody (Cat#101, 1:20,000) respectively. Image was developed using FeQ™ ECL Substrate Kit (Cat#226).



Western blotting analysis using anti-SCAMP2 antibody (Cat#65906). Total cell lysates (30 µg) from various cell lines were loaded and separated by SDS-PAGE. The blot was incubated with anti-SCAMP2 antibody (Cat#65906, 1:5,000) and HRP-conjugated goat anti-mouse secondary antibody (Cat#101, 1:20,000) respectively. Image was developed using FeQ™ ECL Substrate Kit (Cat#226).



Immunocytochemical staining of HeLa cells using anti-SCAMP2 antibody (Cat#65906, 1:1,000), Top panel: wild-type (WT); Bottom panel: SCAMP2 shRNA knockdown (KD). Nuclei were stained blue with DAPI; SCAMP2 was stained magenta with Alexa Fluor® 647. Scale bar, 20 μ m.