

# KD-Validated Anti-PPT1 Mouse Monoclonal Antibody



**Catalog #: 65909**

## Aliases

PPT1; Palmitoyl-Protein Thioesterase 1; CLN1; INCL; PPT; Palmitoyl-Protein Hydrolase 1; EC 3.1.2.22; Ceroid-Palmitoyl-Palmitoyl-Protein Thioesterase 1; Ceroid-Lipofuscinosis, Neuronal 1, Infantile; PPT-1

## Background

NCBI Gene Entry: [5538](#)

UniProt Entry: [P50897](#)

## Application Information

Molecular Weight: Predicted, 34 kDa; observed, 30-32 kDa

Clonality: Mouse monoclonal antibody

Clone ID: 25GB5785

Species Reactivity: Human

Applications Tested: Western blotting (WB)

## Immunogen

Recombinant protein of human PPT1

## Isotype

Mouse IgG2b

## Storage Buffer

Supplied in PBS (pH 7.4) containing 50% glycerol, and 0.02% sodium azide.

## Storage

Store at -20 °C for one year.

## Recommended Dilutions

Western Blotting (WB): 1:500-1:2,500

**Note:** This product is for research use only.

## Validation Data

---

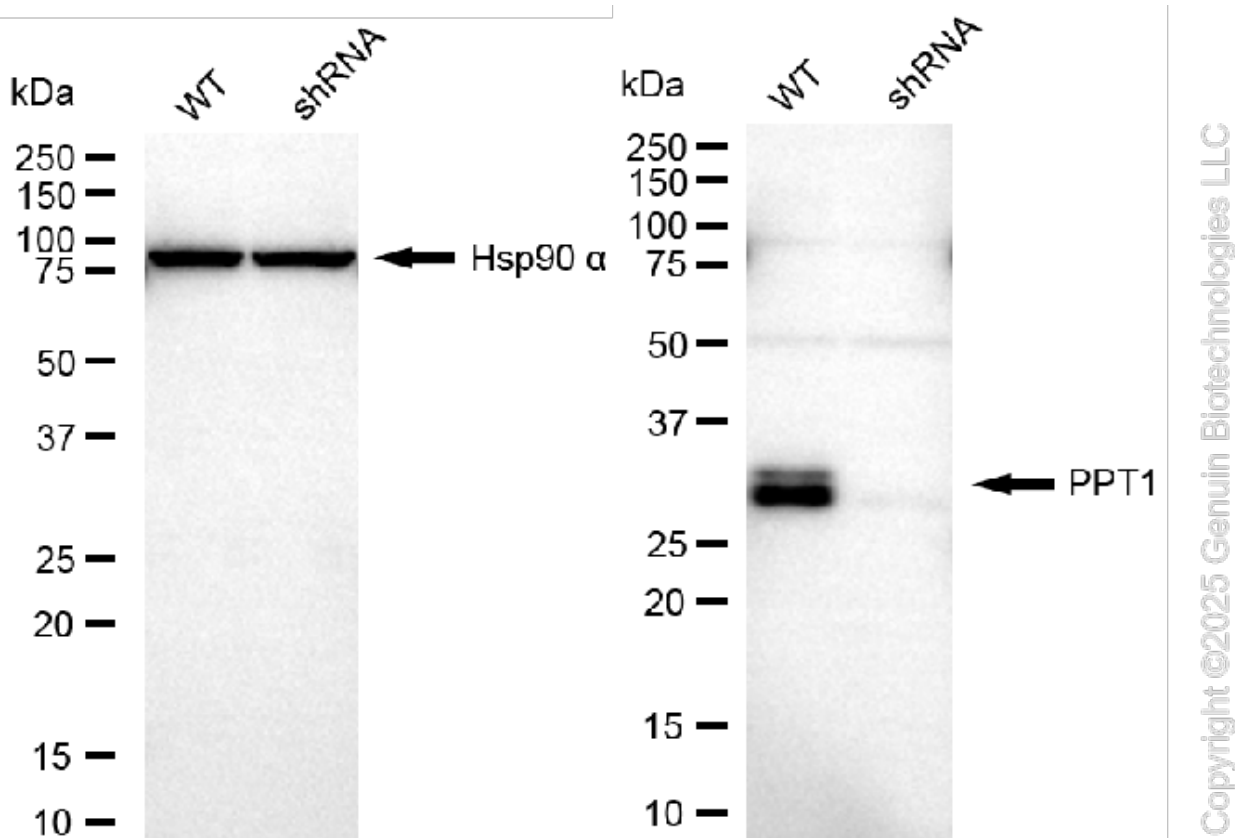
### SUPPORT

SUPPORT@GENUINBIOTECH.COM  
TEL: +1-540-855-7041

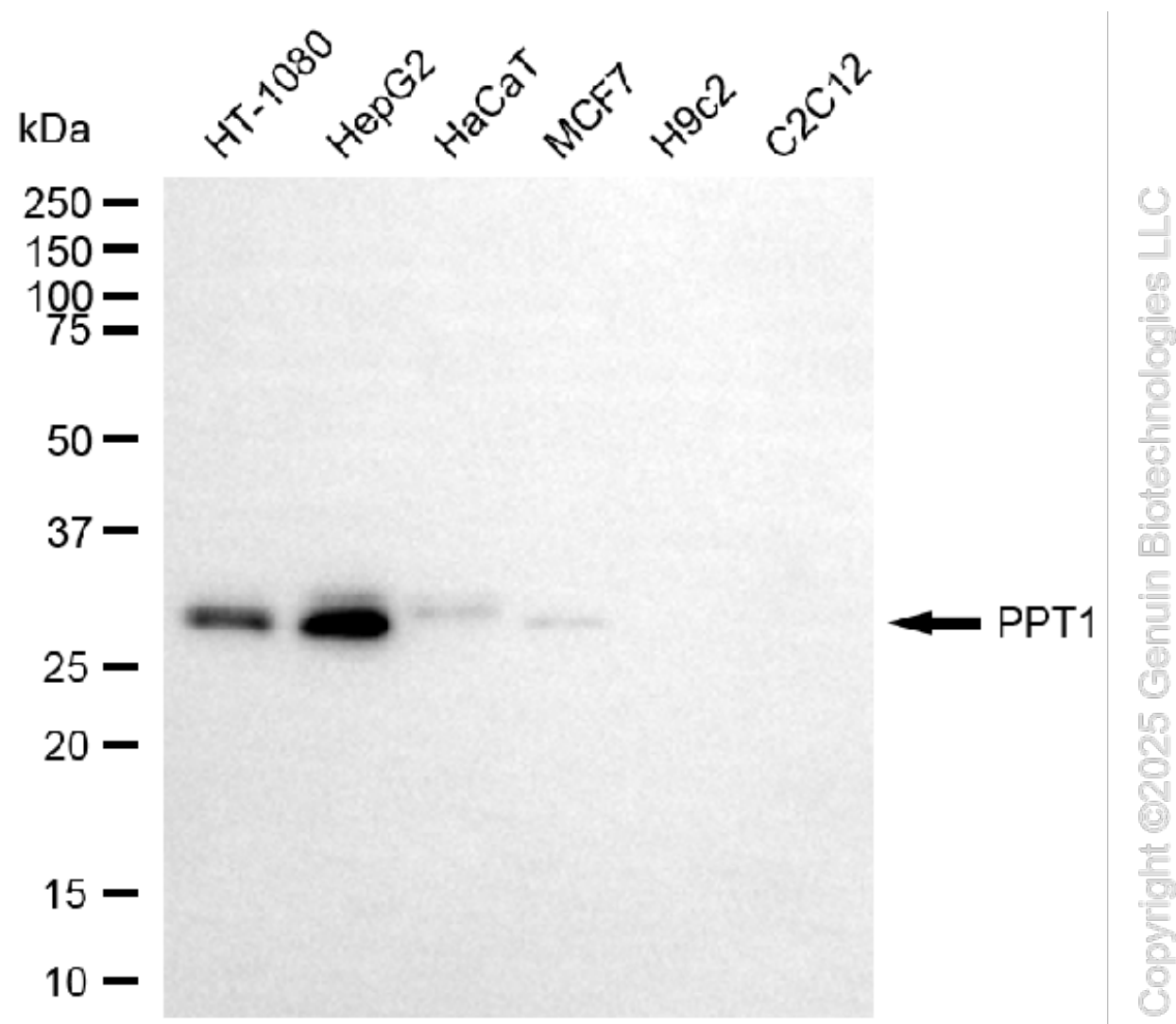
### ORDERS

SALES@GENUINBIOTECH.COM  
FAX: +1-540-855-7041

[WWW.GENUINBIOTECH.COM](http://WWW.GENUINBIOTECH.COM)



Western blotting analysis using anti-PPT1 antibody (Cat#65909). PPT1 expression in wild-type (WT) and PPT1 shRNA knockdown (KD) HeLa cells with 30 µg of total cell lysates. Hsp90 α serves as a loading control. The blot was incubated with anti PPT1 antibody (Cat#65909, 1:2,500) and HRP-conjugated goat anti-mouse secondary antibody (Cat#101, 1:20,000) respectively. Image was developed using FeQ™ ECL Substrate Kit (Cat#226).



Western blotting analysis using anti-PPT1 antibody (Cat#65909). Total cell lysates (30  $\mu$ g) from various cell lines were loaded and separated by SDS-PAGE. The blot was incubated with anti-PPT1 antibody (Cat#65909, 1:2,500) and HRP-conjugated goat anti-mouse secondary antibody (Cat#101, 1:20,000) respectively. Image was developed using FeQ™ ECL Substrate Kit (Cat#226).