

# KD-Validated Anti-MAD2L1BP Mouse Monoclonal Antibody



**Catalog #: 65917**

## Aliases

MAD2L1BP; MAD2L1 Binding Protein; CMT2; KIAA0110; P31comet; MAD2L1-Binding Protein; Caught By MAD2 Protein; DJ261G23.1; P31(Comet)

## Background

NCBI Gene Entry: [9587](#)

UniProt Entry: [Q15013](#)

## Application Information

Molecular Weight: Predicted, 31 kDa; observed, 36 kDa

Clonality: Mouse monoclonal antibody

Clone ID: 25GB5820

Species Reactivity: Human

Applications Tested: Western blotting (WB), flow cytometry (FCM)

## Immunogen

Recombinant protein of human MAD2L1BP

## Isotype

Mouse IgG2b

## Storage Buffer

Supplied in PBS (pH 7.4) containing 50% glycerol, and 0.02% sodium azide.

## Storage

Store at -20 °C for one year.

## Recommended Dilutions

Western Blotting (WB): 1:500-1:2,500

Flow Cytometry (FCM): 1:200-1:2,000

**Note:** This product is for research use only.

## Validation Data

---

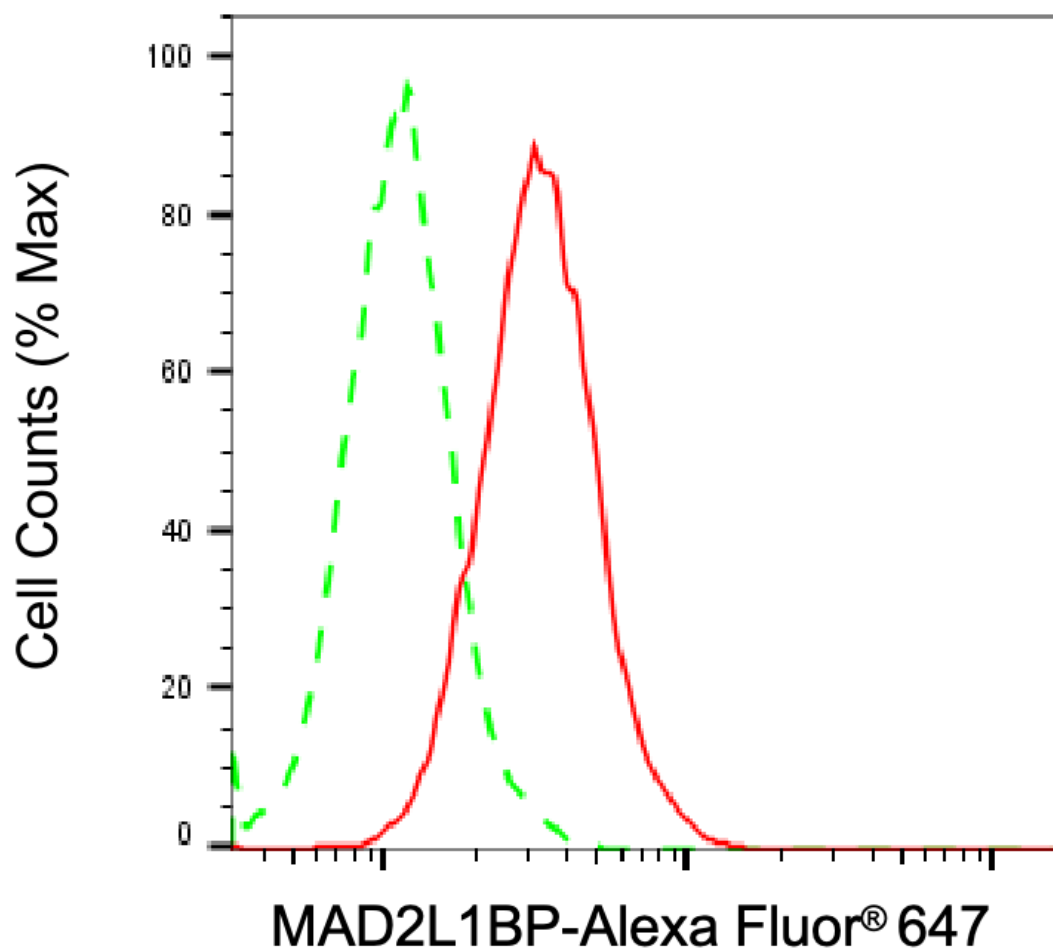
### SUPPORT

SUPPORT@GENUINBIOTECH.COM  
TEL: +1-540-855-7041

### ORDERS

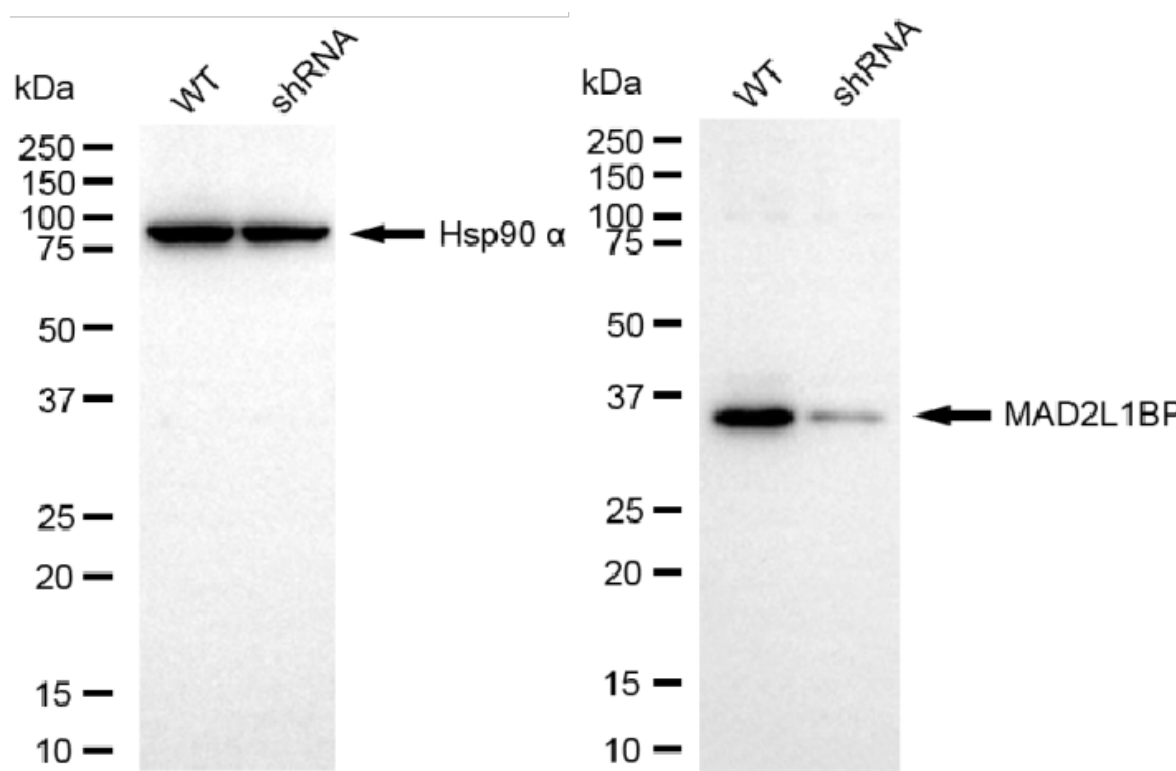
SALES@GENUINBIOTECH.COM  
FAX: +1-540-855-7041

[WWW.GENUINBIOTECH.COM](http://WWW.GENUINBIOTECH.COM)



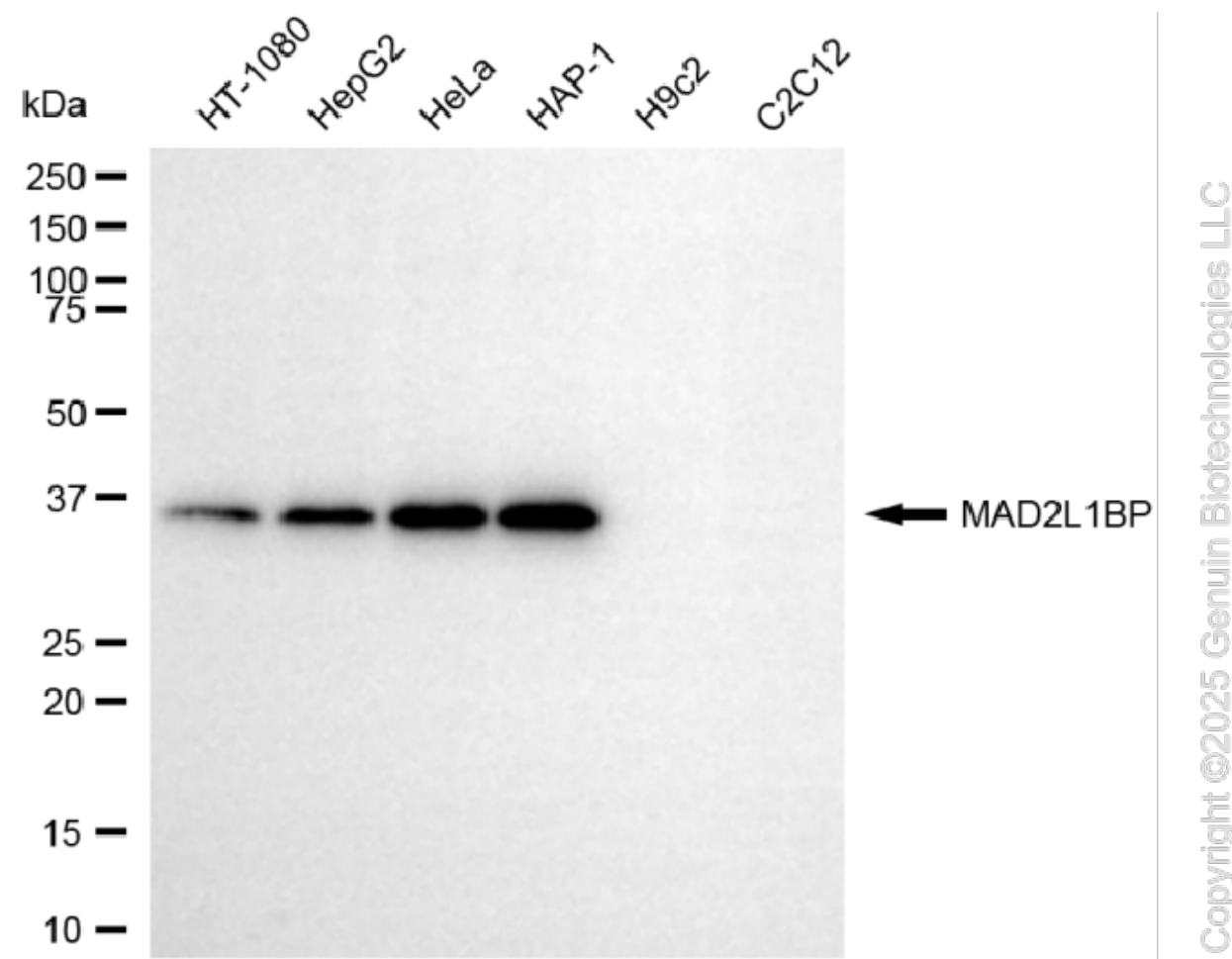
Copyright ©2025 Genuin Biotechnologies LLC

Flow cytometric analysis of MAD2L1BP expression in HAP-1 cells using anti-MAD2L1BP antibody (Cat#65917, 1:2,000). Green, isotype control; red, MAD2L1BP.



Copyright ©2025 Genuin Biotechnologies LLC

Western blotting analysis using anti-MAD2L1BP antibody (Cat#65917). MAD2L1BP expression in wild-type (WT) and MAD2L1BP shRNA knockdown (KD) HeLa cells with 20 µg of total cell lysates. Hsp90 α serves as a loading control. The blot was incubated with anti-MAD2L1BP antibody (Cat#65917, 1:2,500) and HRP-conjugated goat anti-mouse secondary antibody (Cat#101, 1:20,000) respectively. Image was developed using FeQ™ ECL Substrate Kit (Cat#226).



Western blotting analysis using anti-MAD2L1BP antibody (Cat#65917). Total cell lysates (30 µg) from various cell lines were loaded and separated by SDS-PAGE. The blot was incubated with anti-MAD2L1BP antibody (Cat#65917, 1:2,500) and HRP-conjugated goat anti-mouse secondary antibody (Cat#101, 1:20,000) respectively. Image was developed using NaQ™ ECL Substrate Kit (Cat#716).